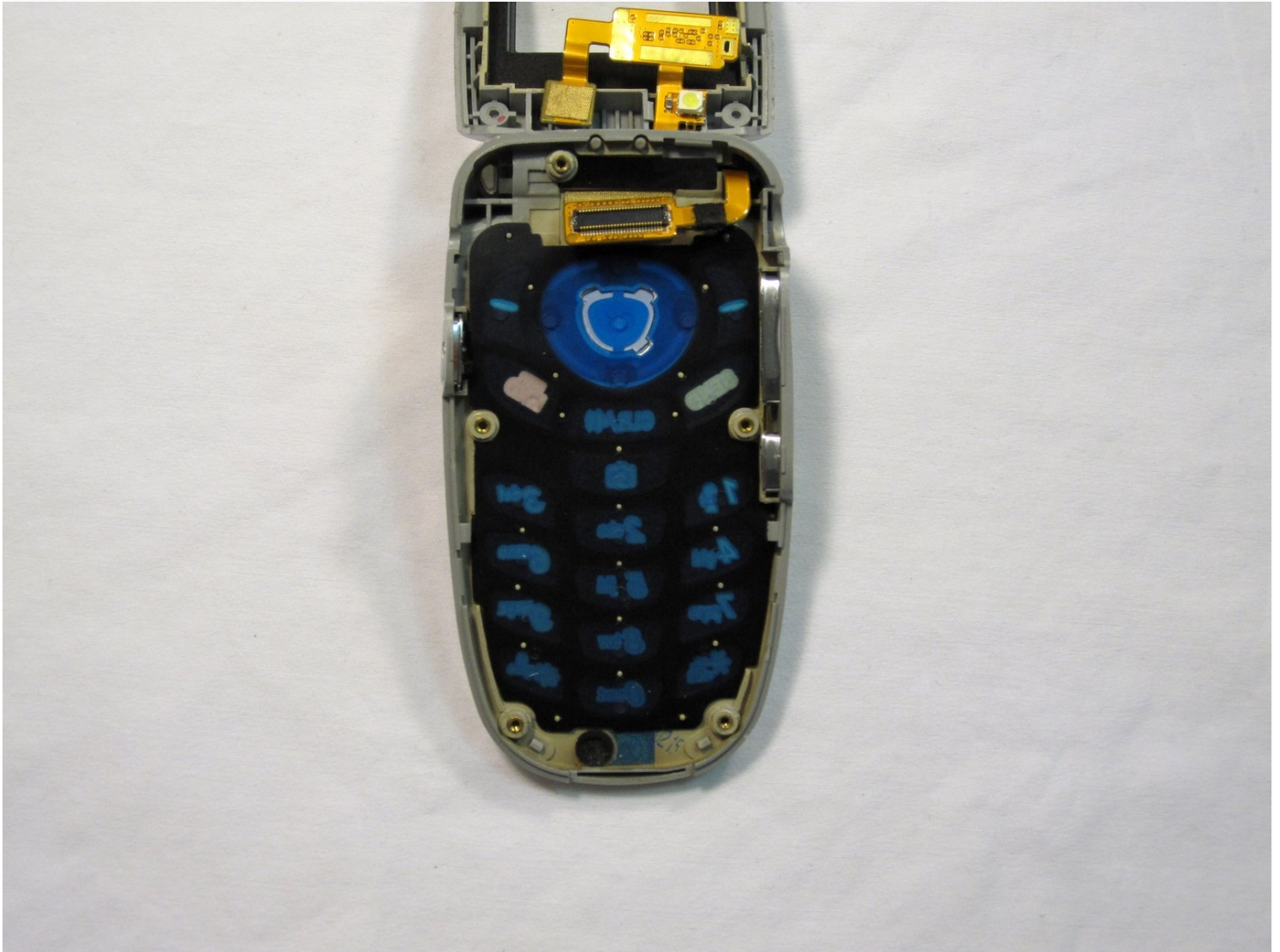




LG VX5200 Keypad Replacement

Instructions to get to and remove the keypad unit.

Written By: Douglas Blaalid



INTRODUCTION

Instructions to get to and remove the keypad unit.

TOOLS:

Fingers (1)

Phillips #00 Screwdriver (1)

iFixit Opening Tool (1)

Push Pin (1)

Step 1 — Battery



- Turn the phone on its back.

Step 2



- Orient the phone as shown.
- Remove the battery cover by pushing upward with your thumb.

Step 3



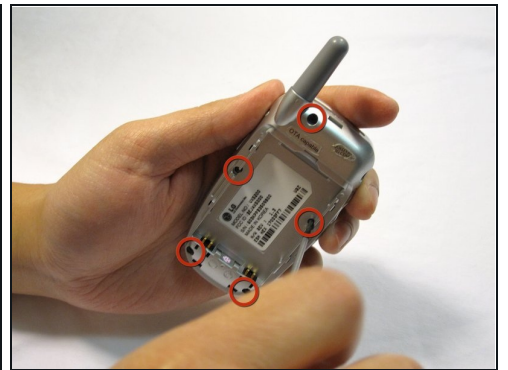
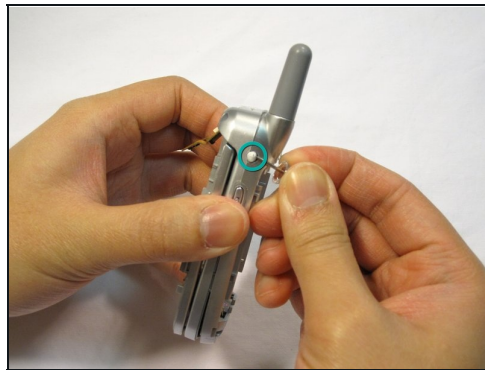
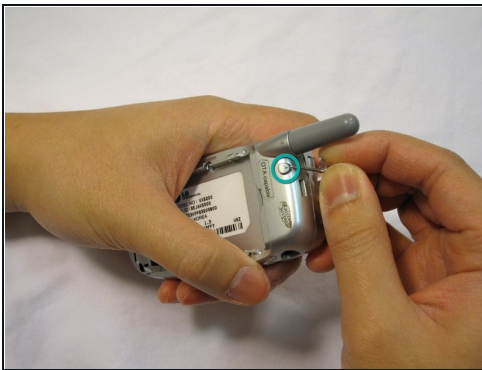
- Place your fingernail at the top of the battery and pry the battery out towards you.

Step 4 — LG VX5200 Rear Body Panel Disassembly



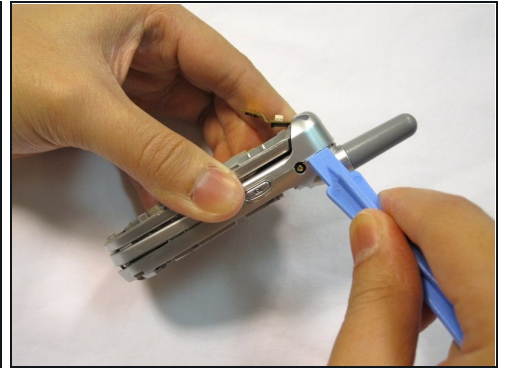
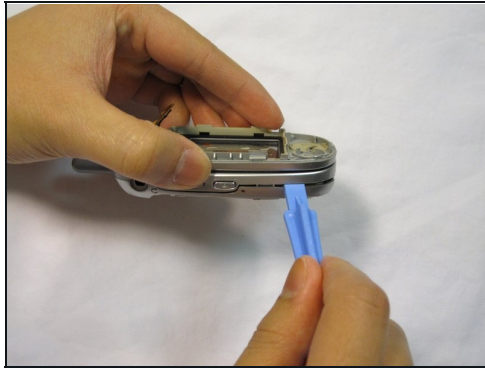
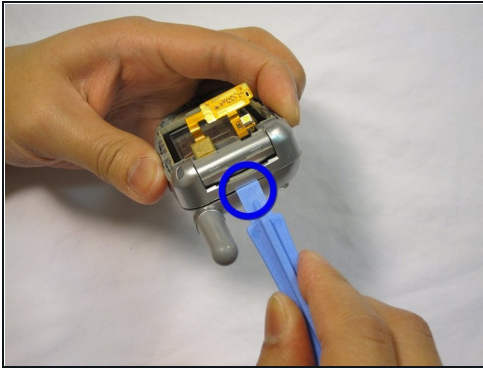
- Orient the phone as shown with the battery already removed.

Step 5



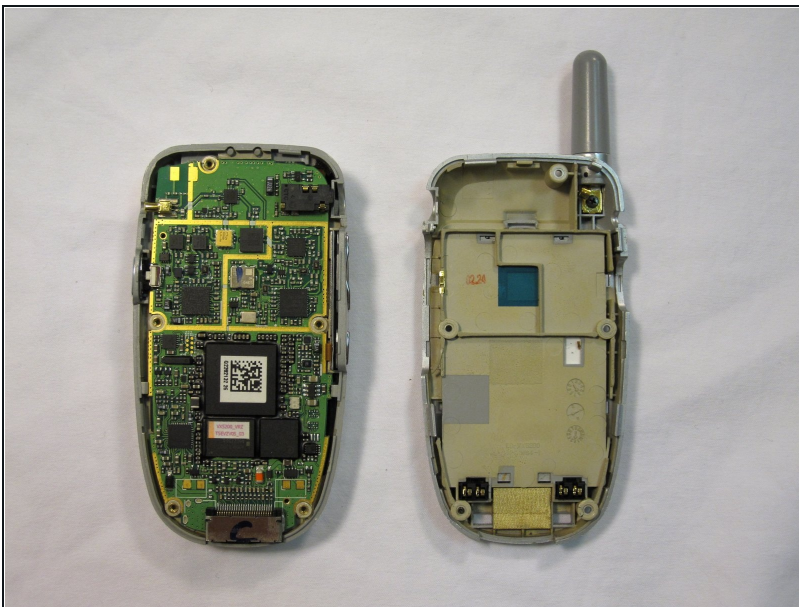
- Remove the 2 plastic plugs located on the side and upper quadrant of the rear body panel by using the push-pin and lifting outwards.
- Use a Phillips #00 screwdriver to remove the 5 screws as shown here.

Step 6



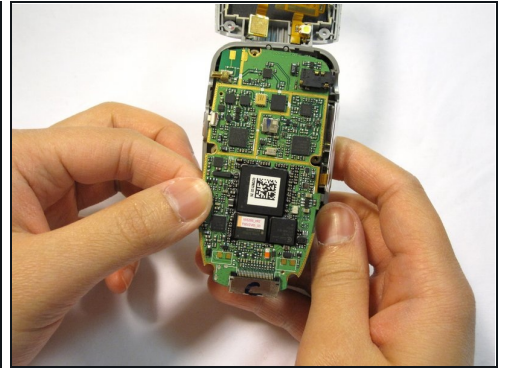
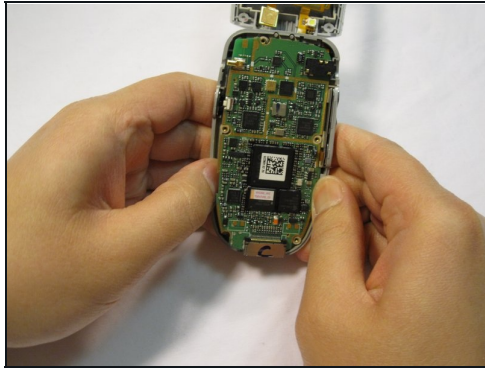
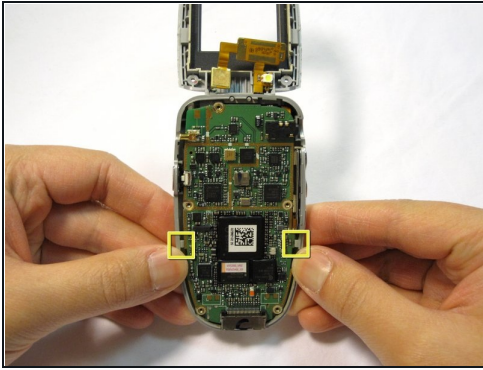
- Place an iPod opener tool in the seam above the antenna.
- Run the tool around the perimeter of the entire phone.

Step 7



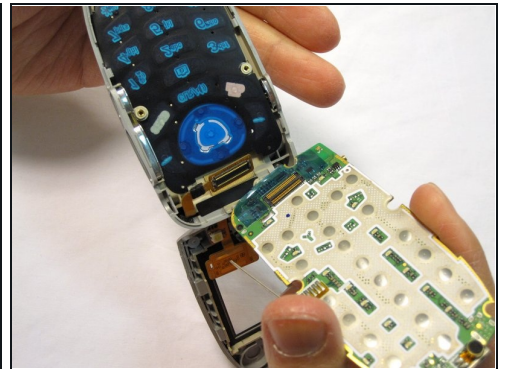
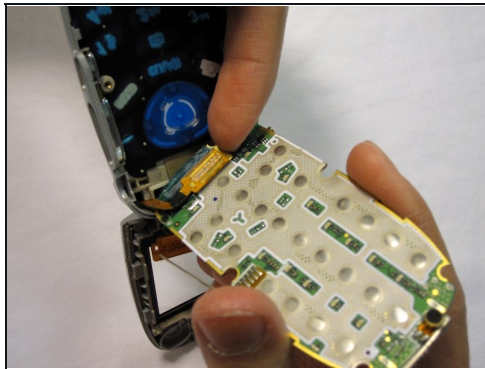
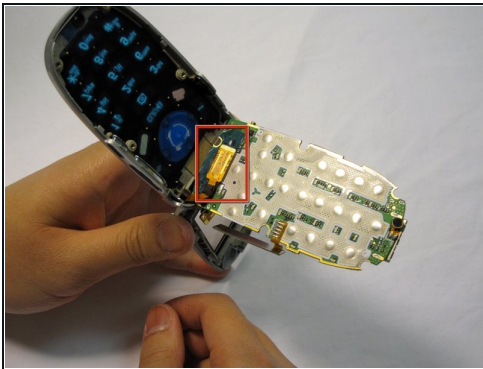
- Check to see that your device looks like the attached photo.

Step 8 — main board



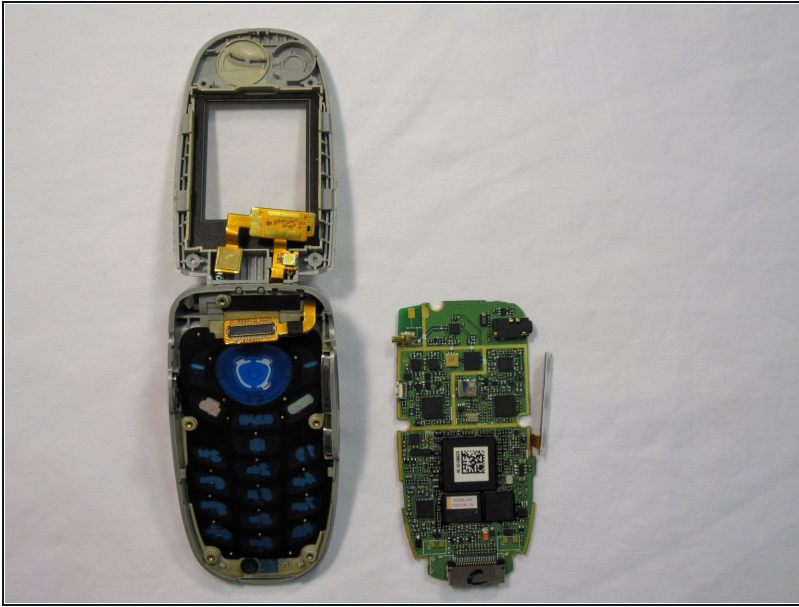
- Locate the tabs that hold the logic board in place.
- Pull the outer frame of the phone outwards to release the board from the tabs.

Step 9



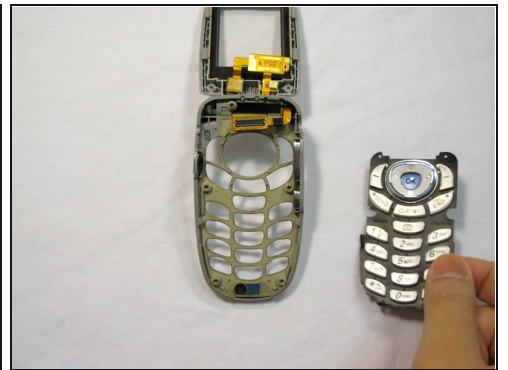
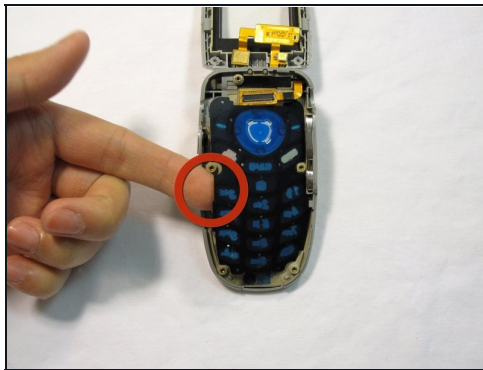
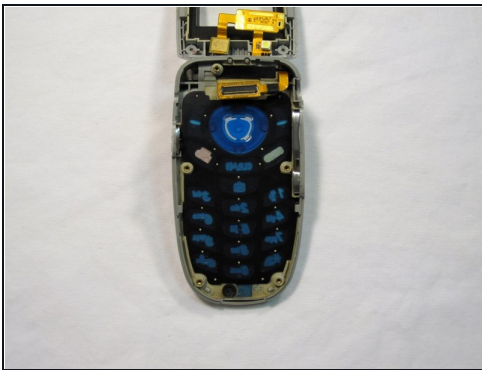
- Locate the copper connection (orange-colored) on the back of the board.
- Pry the connector free from the board with your fingernail.

Step 10



- Check to see that your device looks like the image shown.
- ⓘ Note: The image is shown with the LCD screen removed. This is not necessary for logic board removal.

Step 11 — Keypad



- Use your finger to lift up the keypad.

Step 12



- Check to see that your device looks like the image shown.

⚠ Do not let the buttons fall out of the side casing of the phone!

- ① Note: The image is shown with the LCD screen removed. This is not necessary for keypad repair.

To reassemble your device, follow these instructions in reverse order.