



Canon ImageCLASS MF4350d Replace Scanner Glass Replacement

If there is something wrong with your scanner's glass, this guide will help you fix it and start scanning in no time.

Written By: Tanner Papenfuss



INTRODUCTION

This guide will help you to replace your scanner's glass. You may need to replace the glass if the glass has noticeable scratching, the glass is broken, or if the glass is cracked. **IMPORTANT:** If the glass is broken take extreme precaution in replacing the glass. Broken glass can cause damage to you and things around you. Also, if you are getting smudges when you scan in items make sure that the glass does not have any fingerprints, smudges, or dust on it. You may need to clean your glass with glass cleaner.



TOOLS:

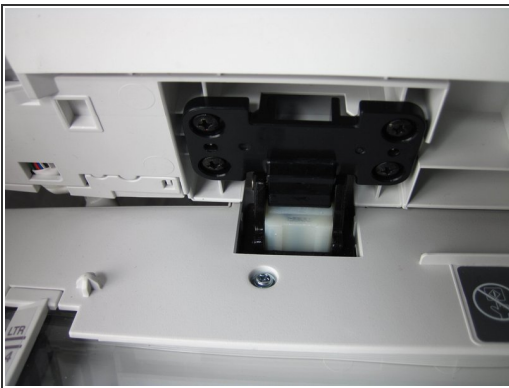
- [Phillips #2 Screwdriver](#) (1)
-

Step 1 — Scanner Disassembly



- ⚠ If at any point you see glass that seems cracked or broken, handle with care. Broken glass is sharp and can cause serious damage.
- Lift up the lid. Then be sure to examine the glass. If there are any cracks or broken fragments handle with extreme care.

Step 2



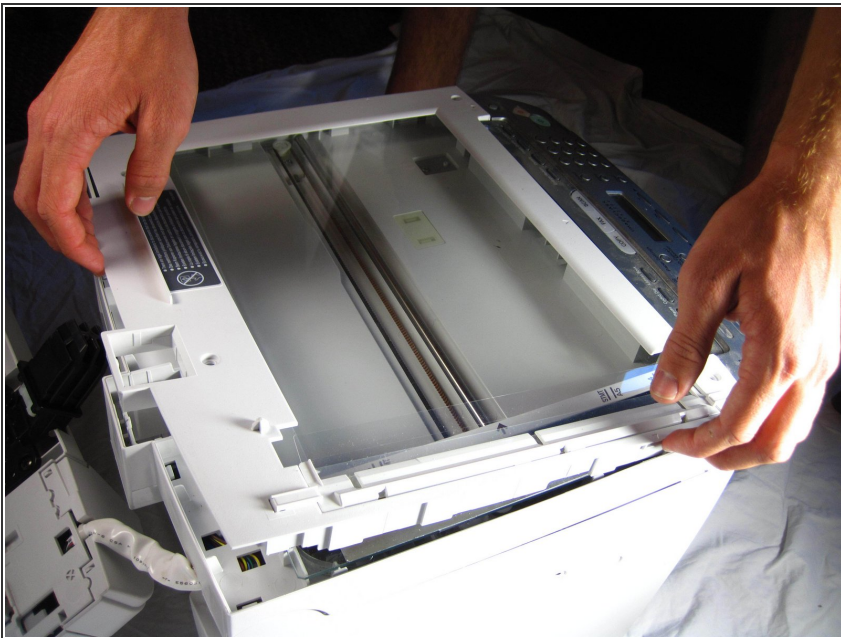
- Locate the black and white hinges.
- Gently lift out the black and white hinges.

Step 3



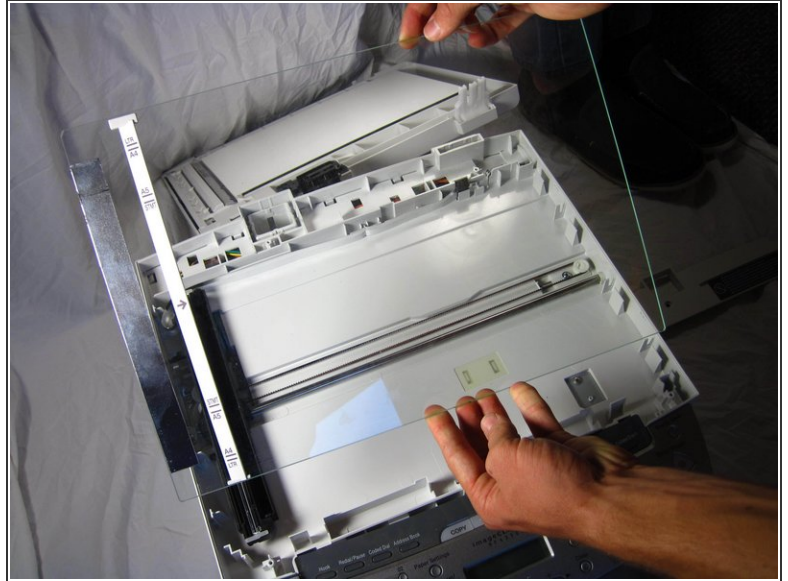
- Next, locate and remove the four 10mm screws.


Step 4



- Gently, pry off the top plate, starting from the back of the printer.

Step 5



 After you have taken off the plate, check to make sure that there is no broken glass. If there is broken glass handle it with gloves. Broken glass, if handled improperly, can cause physical injury.

Step 6 — Replace Scanner Glass



- Take out the damaged glass and fit the replacement glass to the printer according to the picture.

To reassemble your device, follow these instructions in reverse order.

This document was generated on 2020-11-18 12:45:03 PM (MST).

