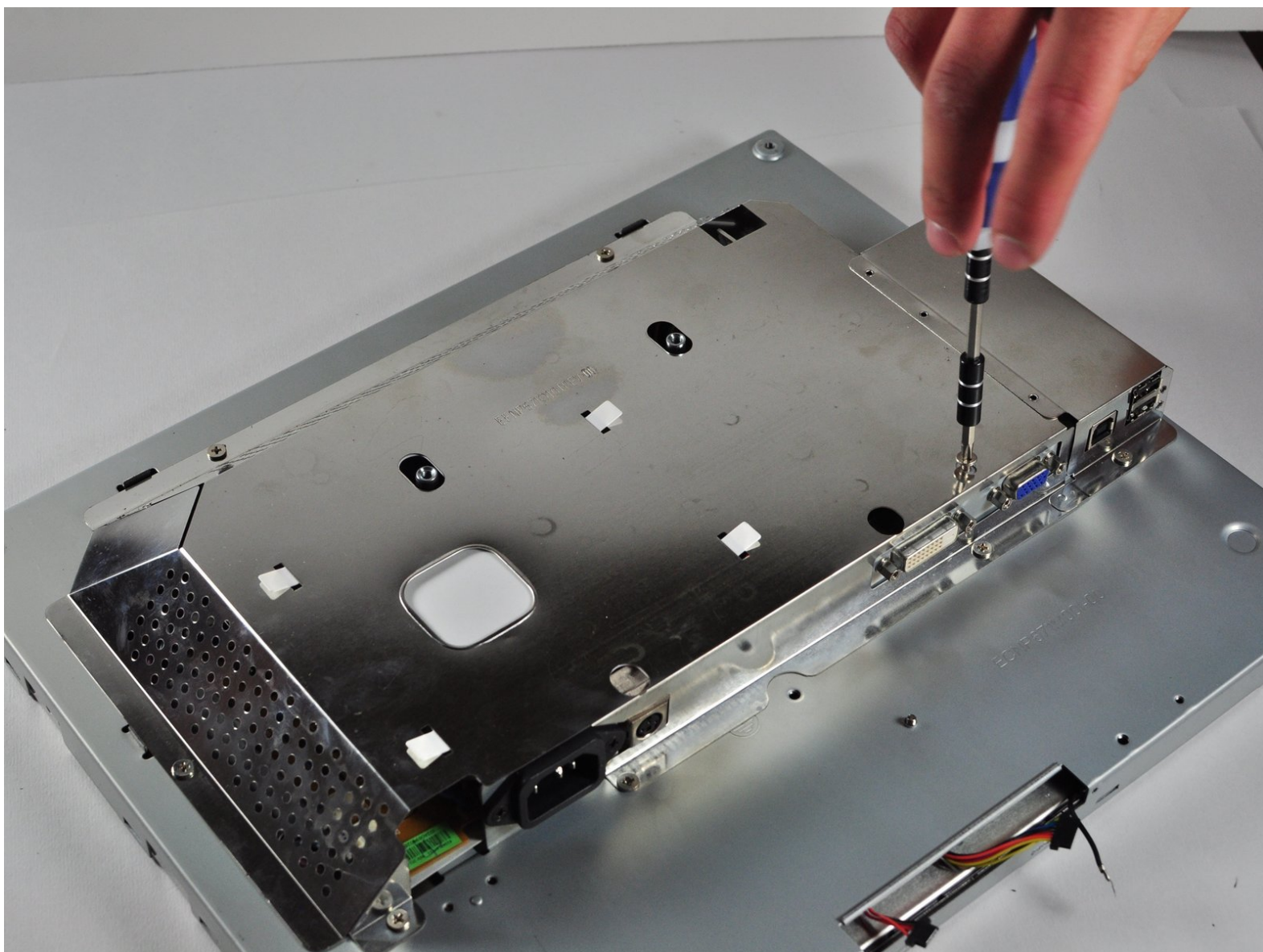




Disassembling NEC LCD1770NX Monitor Enclosure

This prerequisite guides you through removing the enclosure from the electric components of the monitor.

Written By: John Patterson



This document was generated on 2020-11-28 03:03:48 AM (MST).



TOOLS:

- [Phillips #2 Screwdriver](#) (1)
- [Phillips #000 Screwdriver](#) (1)



PARTS:

- [Metal Spudger](#) (1)

Step 1 — Stand



- Place the monitor face down on a clean, flat surface.

Step 2



- Firmly remove the back panel of the stand by pulling it up and away from the monitor.

Step 3



- Unscrew the two 6mm Phillips PH2 screws to detach the stand enclosure from the stand.

Step 4



- Firmly grasp the stand enclosure with your hand and slide it to base of stand.

Step 5



- Unscrew the two 14.5mm Phillips PH2 screws holding the stand to the monitor.

Step 6



- Lift the the stand straight up to remove it.

Step 7 — Monitor Enclosure




- Place the monitor screen face up.
- Pull the frame off by placing your fingers on the inside of the frame and pulling out and up, the frame should snap off.
- Continue your way around the screen.

Step 8

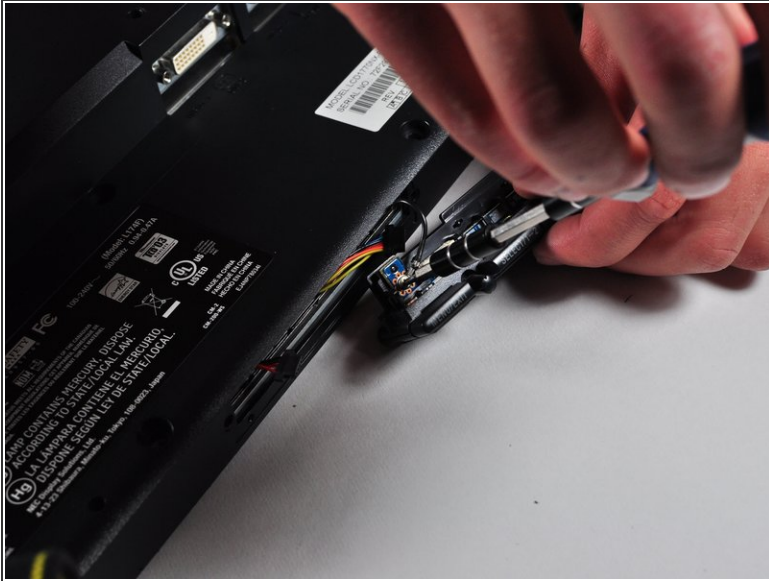


- Unscrew the two 7mm screws from the bottom of the button assembly.

 Do not pull the button assembly out too quickly or with too much force! Damage to the wires can occur.

- Pull the button assembly out a few inches and unplug the colored cables.

Step 9



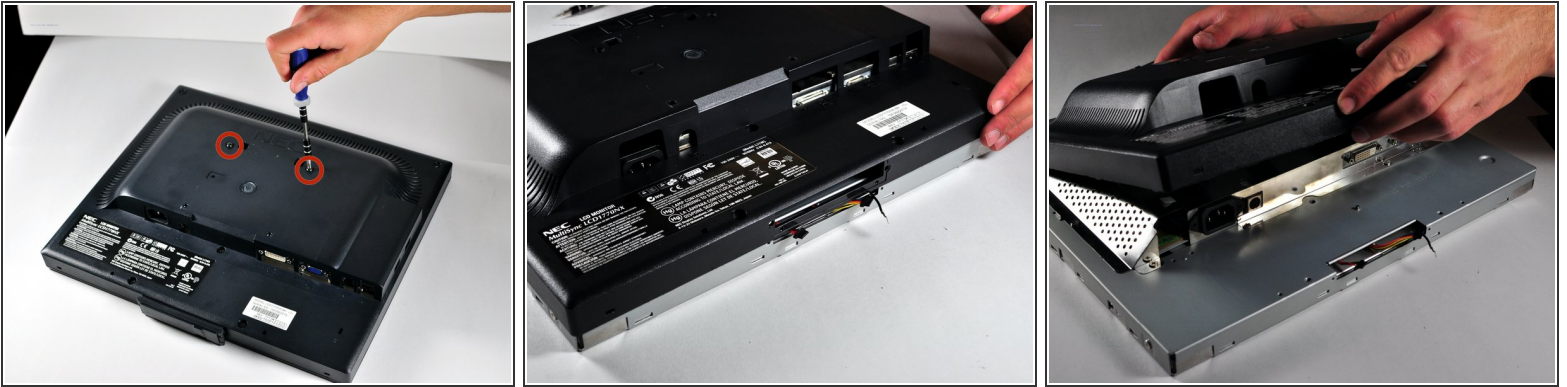
- Unscrew the gold colored 7mm Phillips PH000 screw holding the button assembly to the monitor.
- Remove the button assembly from the monitor.

Step 10



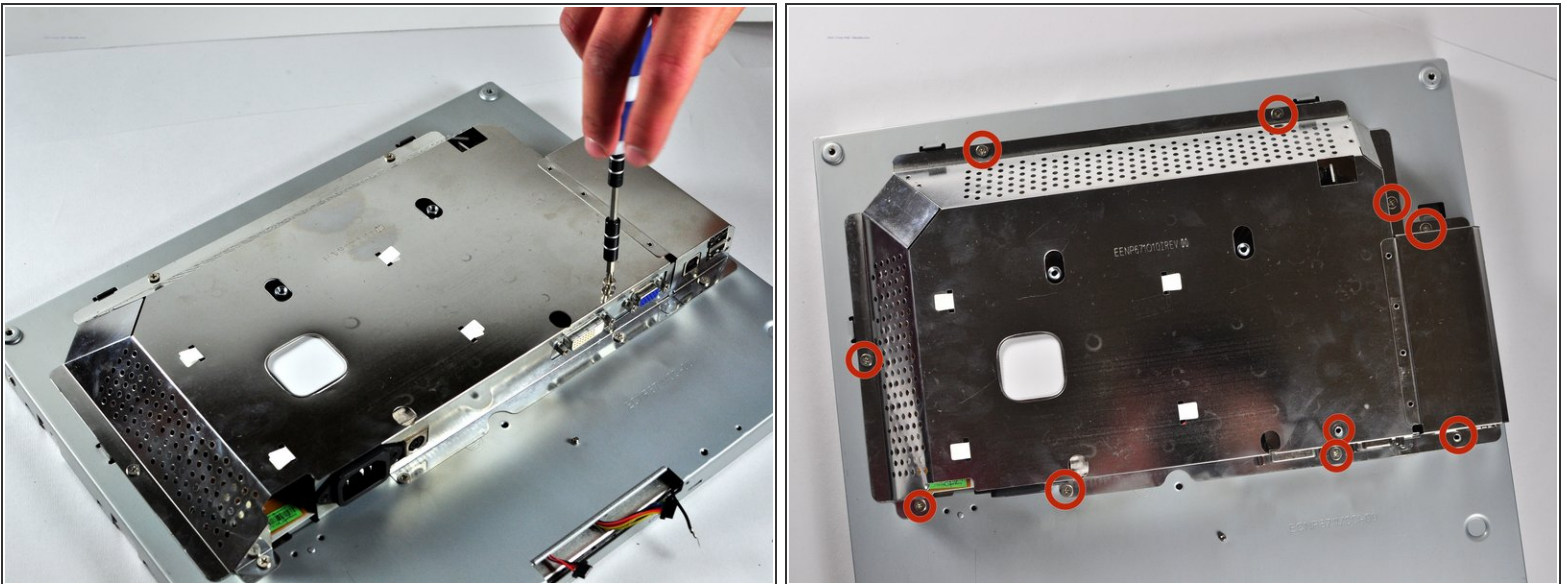
- With the monitor face-down, unscrew the 5 7mm Phillips PH2 screws around the outside of the enclosure.

Step 11



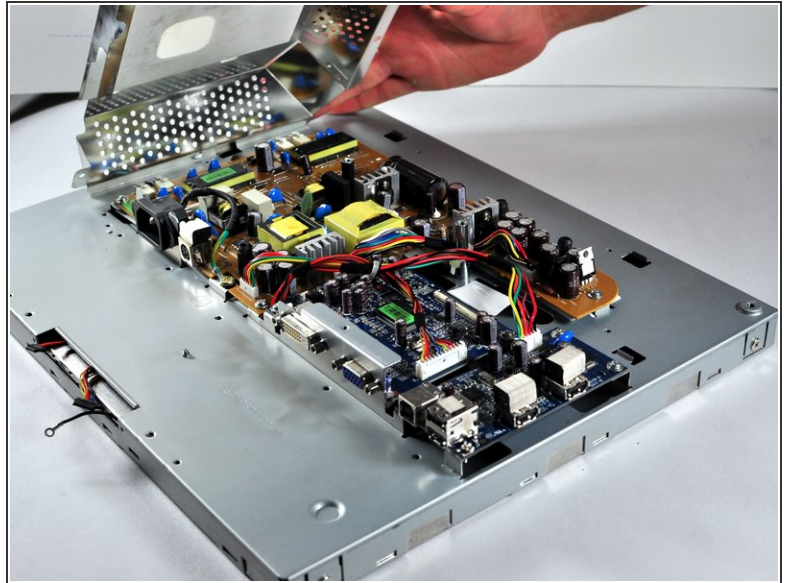
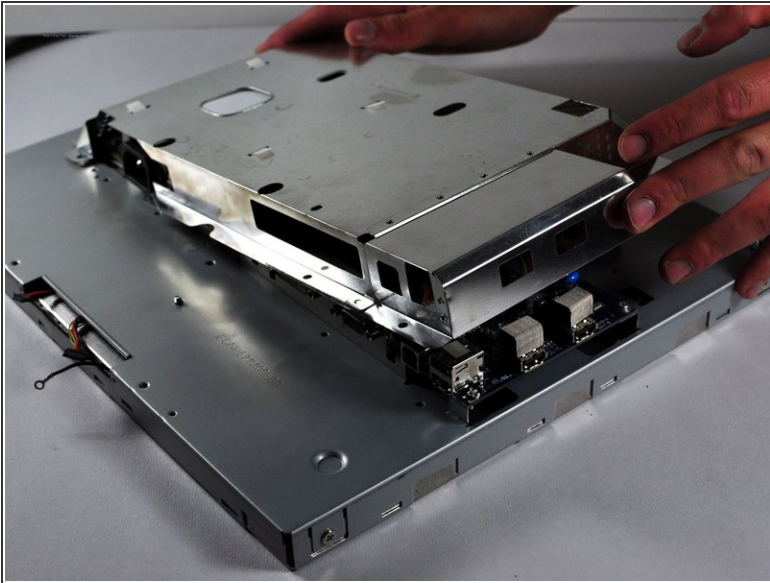
- Unscrew the 2 14.5mm Phillips PH2 screws located on the raised center of the enclosure.
- Carefully pull the enclosure off the monitor.

Step 12



- Unscrew the 10 5mm Philips PH2 screws holding the metal casing to the monitor.

Step 13



- Pull the the metal casing off of the monitor to reveal the motherboards.

To reassemble your device, follow these instructions in reverse order.