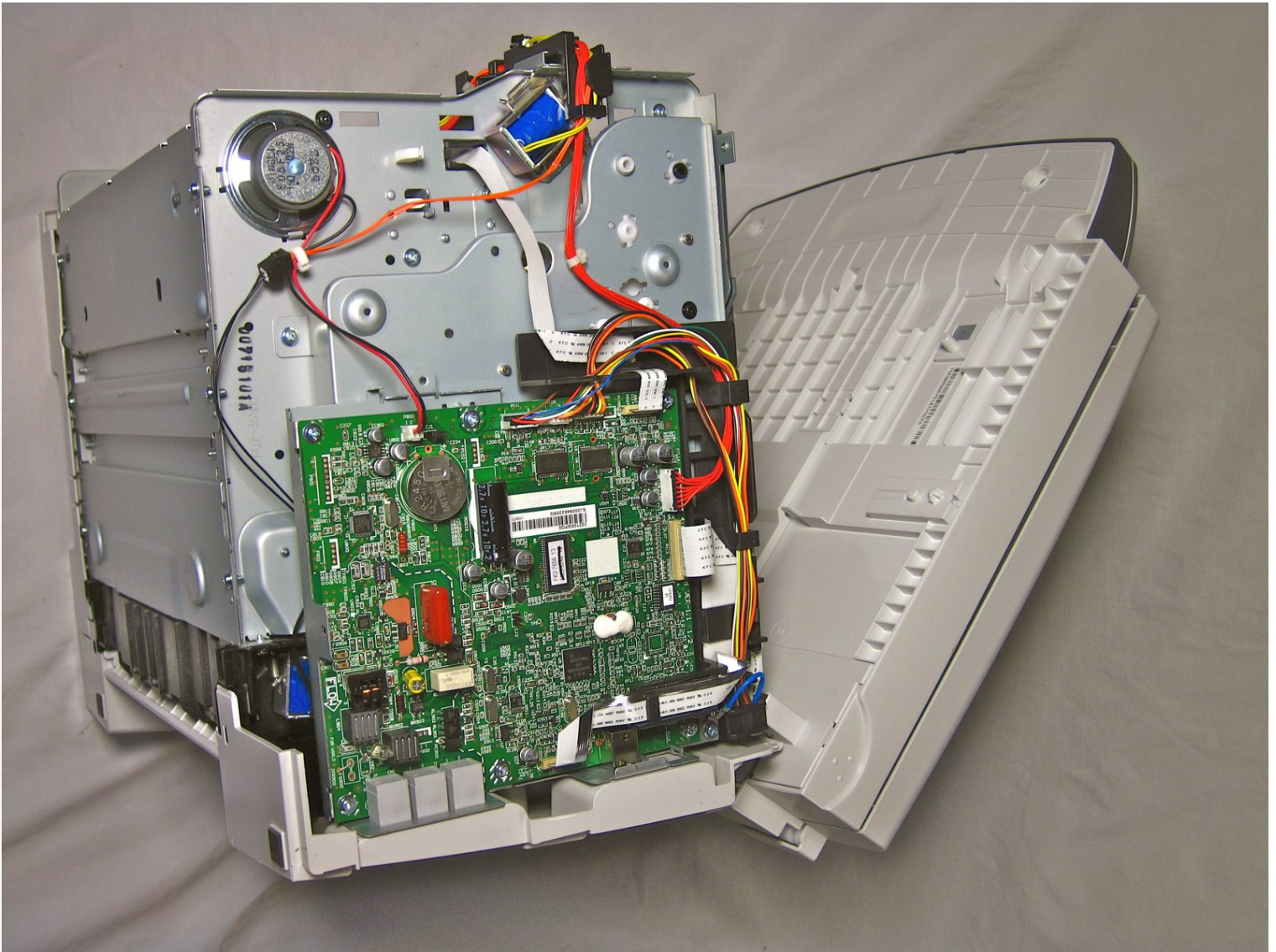




Canon ImageCLASS MF4350d Speaker Replacement

This guide will teach you how to replace a...

Written By: Helena Yanez



INTRODUCTION

This guide will teach you how to replace a faulty speaker.



TOOLS:

Phillips #2 Screwdriver (1)



PARTS:

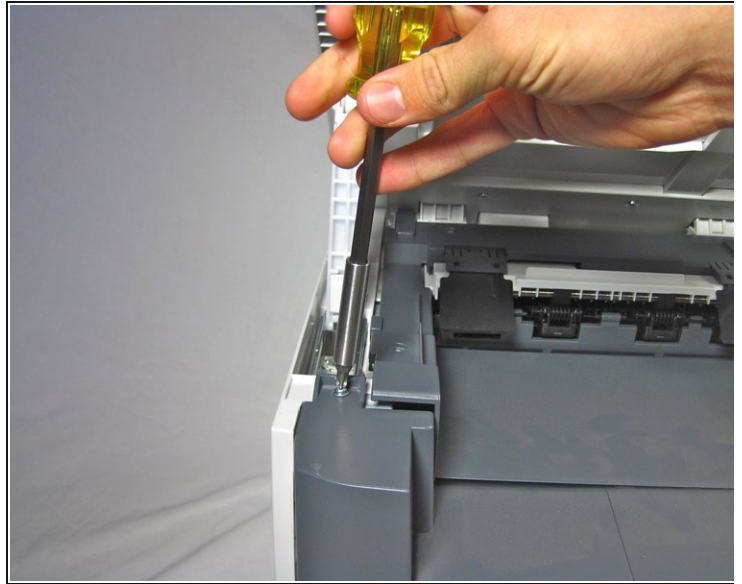
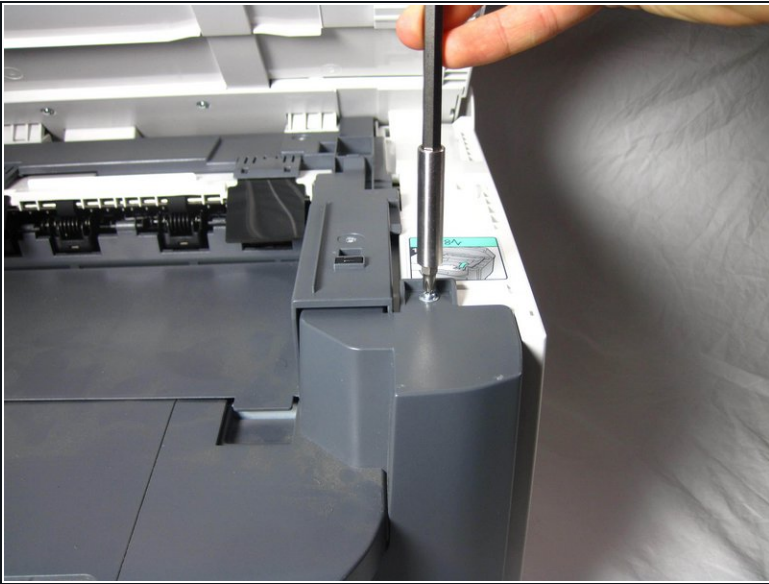
Speaker (1)

Step 1 — Canon ImageCLASS MF4350d Remove Front Paneling



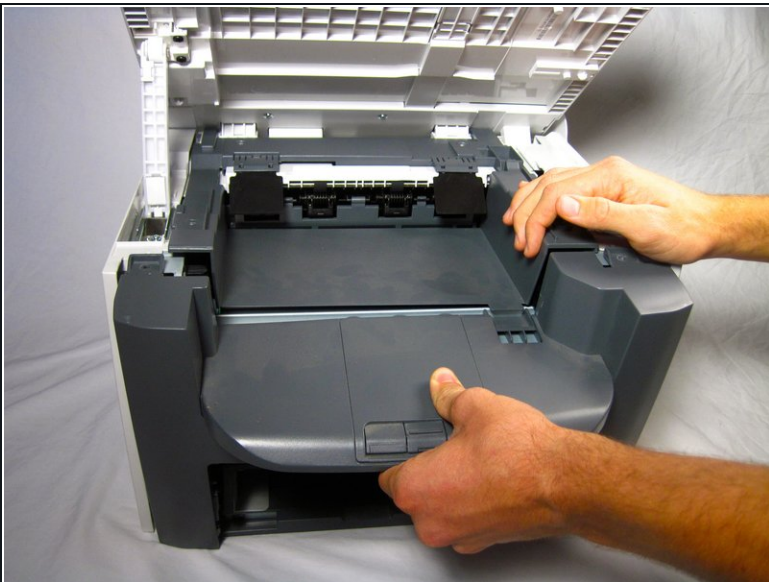
- Lift the printer lid up as shown in the photo.

Step 2



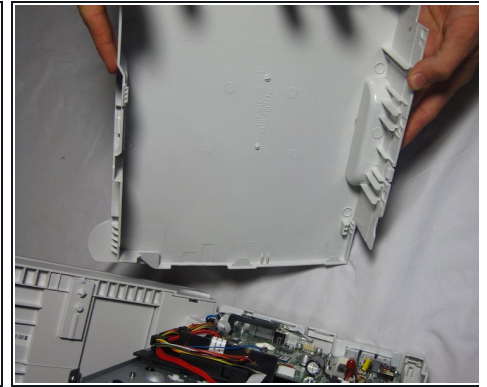
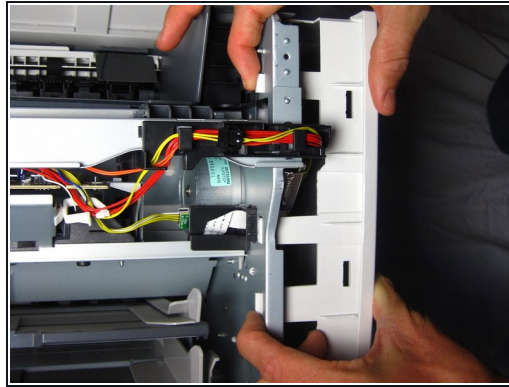
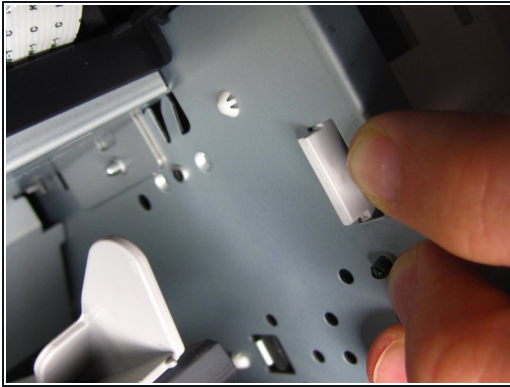
- Locate and remove the two 10mm side screws. There is one on each side.

Step 3



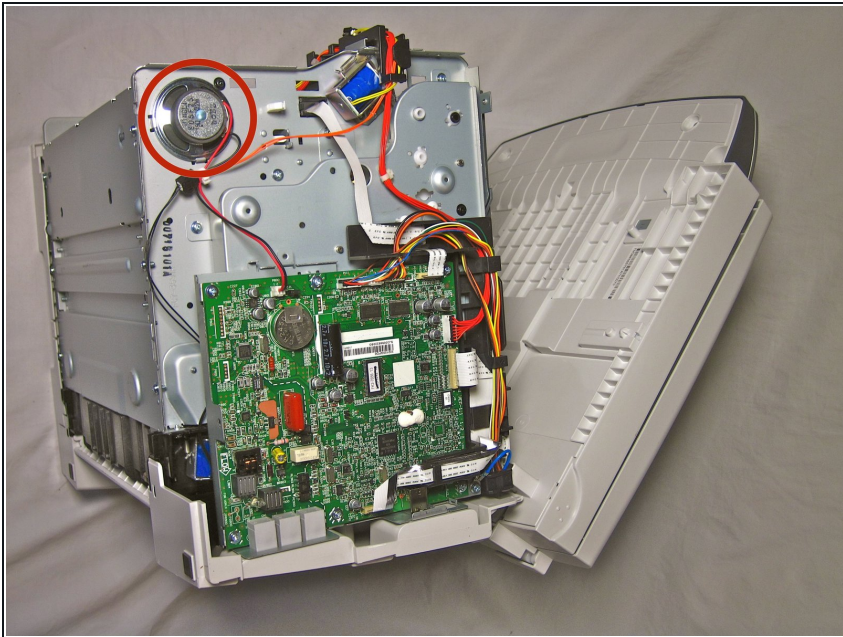
- Unhook the plastic panel from the printer starting from the top.
 - ❗ You may need to wiggle the panel a bit to loosen it.
- To remove the bottom part of the paneling gently lay the printer on its back.
 - ❗ The scanner lid needs to be supported when moving the printer

Step 4 — Canon ImageCLASS MF4350d Remove Right Side Paneling



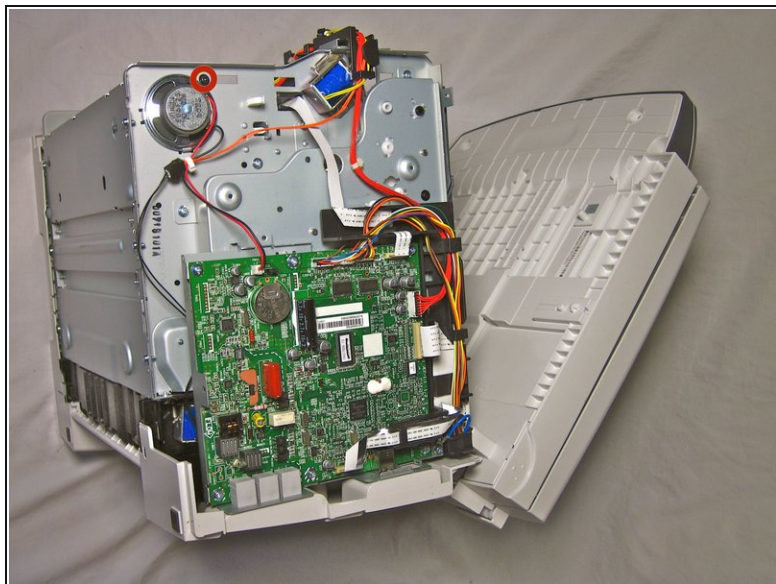
- Gently unhook the right side paneling (as looking at the printer's front face) from the printer.
 - ① Use a gentle back and forth motion to wiggle the hooks out.

Step 5 — Speaker



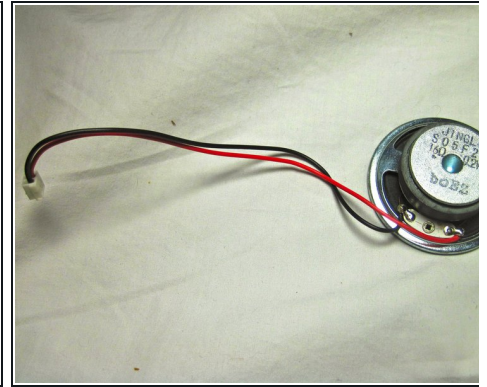
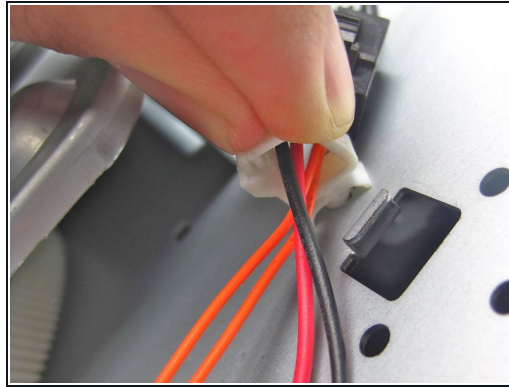
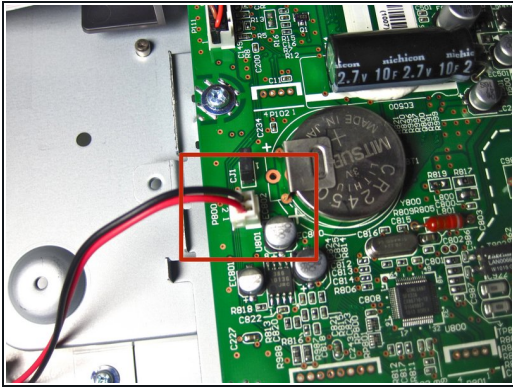
- Lay printer on its left side for better access to the speaker.
 - ① Note: The scanner lid needs to be supported when moving the printer

Step 6



- Locate the black 7mm screw holding the speaker in place.
- Using a Phillips head screw driver, unscrew the 7mm screw.

Step 7



- Locate the red and black wires connected to the speaker.
- Undo the white clip holding the wires in place by pinching the tab on the top.
- Remove the red and black wires from the wire bundle.

⚠ When replacing the old speaker, do not touch any part of the new speaker that is not metal other than the wires. Doing so could damage the speaker.

- Lift out the speaker

To reassemble your device, follow these instructions in reverse order.