



PowerBook G4 Aluminum 12" 1-1.5 GHz LCD Replacement

Save money by replacing your broken LCD element.

Written By: Matthew Newsom



INTRODUCTION

Save money by replacing your broken LCD element.

TOOLS:

[Coin](#) (1)
[Phillips #00 Screwdriver](#) (1)
[Spudger](#) (1)
[T6 Torx Screwdriver](#) (1)

PARTS:

[G4 Aluminum 12" LCD Panel](#) (1)

Step 1 — Battery



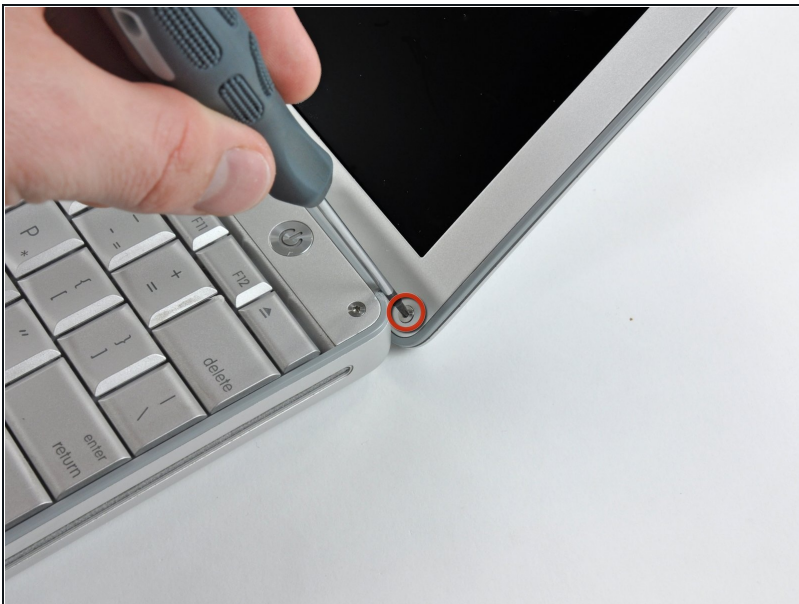
- Use a coin to turn the battery locking screw 90 degrees to the right.
- Lift the battery out of the computer.

Step 2 — LCD



- Open the computer and rotate the display as far as possible.
- Remove the T6 Torx screw from the bottom left corner of the display assembly. The computer casing will not allow the screwdriver to be inserted directly into the screw, so be careful not to strip the screw.

Step 3



- Remove the T6 Torx screw from the bottom right corner of the display assembly.
- ☑ To avoid cross-threading these screws during reinstallation, use a pair of [tweezers](#) to start each screw in its hole before using your Torx screwdriver to tighten them.

Step 4



⚠ The next steps involve the use of plastic opening tools and spudgers which will probably be ruined in the process. Have a few spares of each tool handy.

- Insert a plastic opening tool between the left edge of the front display bezel and the plastic strip attached to the rear bezel, with the edge of the tool angled toward the LCD.
 - Rotate the tool away from the LCD to pop the rear bezel off the tabs on the front display bezel.
 - Work along the left edge of the display until the rear bezel is evenly separated from the front bezel.
- i** Freeing these tabs may require some force. Be sure to support the display assembly with your other hand to avoid putting too much strain on the hinges.

Step 5



- Insert a plastic opening tool between the right edge of the front display bezel and the plastic strip attached to the rear bezel, with the edge of the tool angled toward the LCD.
- Rotate the tool away from the LCD to pop the rear bezel off the tabs on the front display bezel.
- Work along the right edge of the display until the rear bezel is evenly separated from the front bezel.

Step 6



- Close the display.

⚠ The rear display bezel is still attached to the display via the antenna cables.

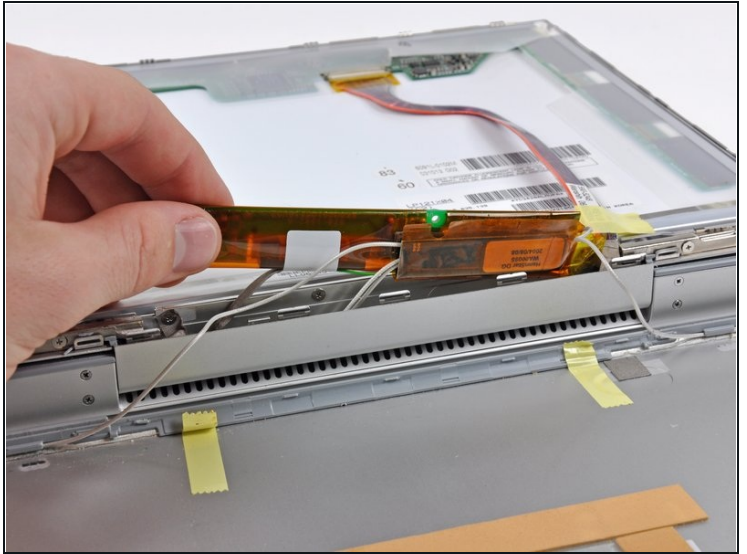
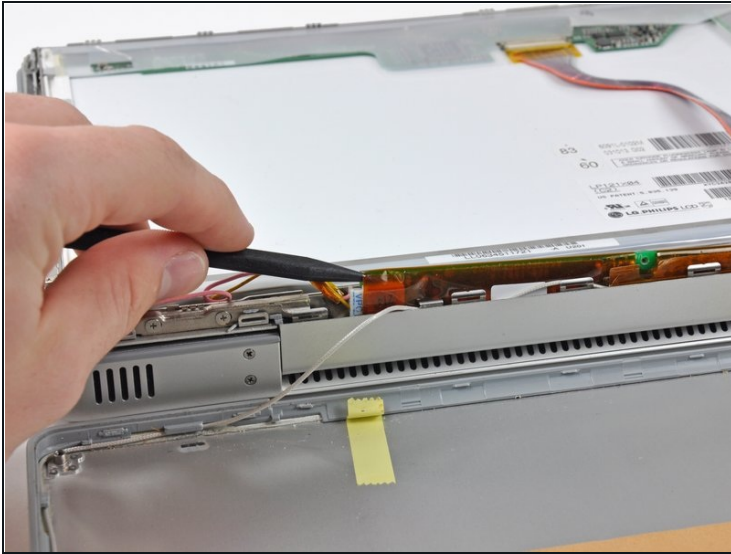
- Lift the bottom edge of the rear display bezel up about an inch.
- Slide the rear display bezel forward to release the clips along the top edge of the display.
- Rotate the rear display bezel away from the display and lay it next to the computer.

Step 7



- Remove the Phillips screw securing the inverter board.

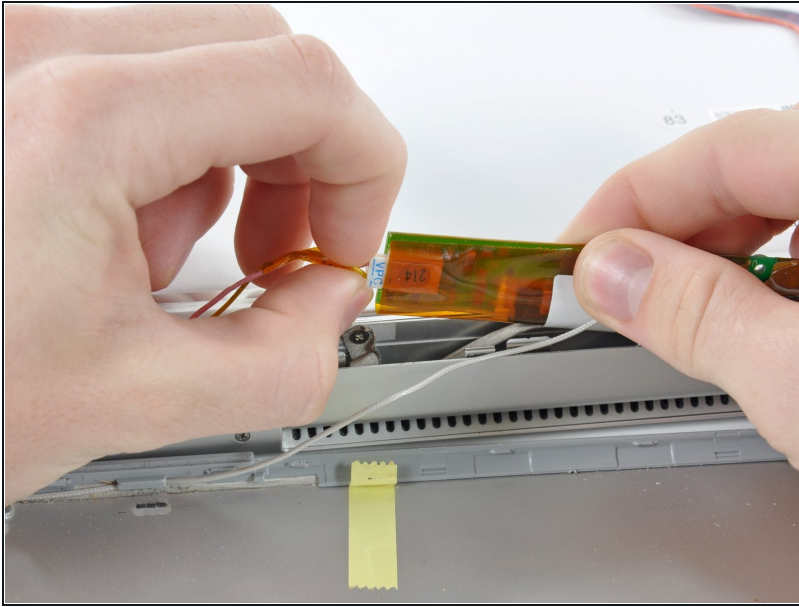
Step 8



- Insert the pointed end of the a spudger between the protective tape and the inverter board.
- Carefully pull up with the spudger to lift the inverter board out enough to access the connector cables.
- Once you can easily grab the board, pull it up enough to gain access to the inverter board's output connector.

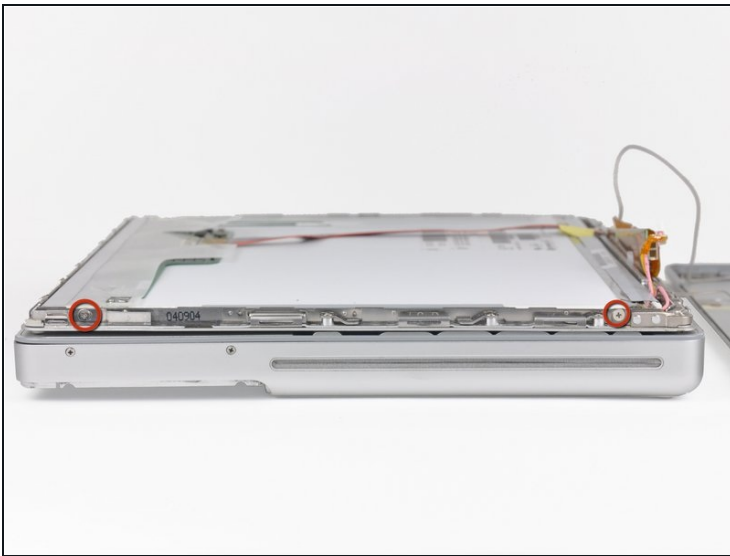
⚠ Gently remove the board in order to avoid damaging any wires or connectors.

Step 9



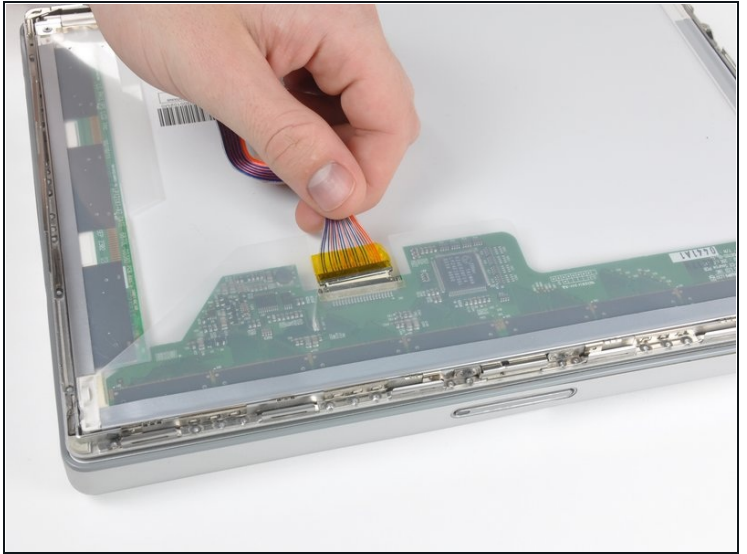
- Disconnect the cable by pulling the connector away from the inverter board's socket.

Step 10



- Remove the two Phillips screws from both sides of the display (four in total).

Step 11



- Remove any tape on the display data cable.
- Pull the display data cable connector away from its socket to disconnect it from the LCD.

Step 12



- Open the display slightly.
- Push the LCD away from the front display bezel near its top edge.
- Remove the LCD, being wary of any cables that may get caught

To reassemble your device, follow these instructions in reverse order.

