



# Sennheiser SK100 G3 button replacement

This guide shows how to repair a damaged "rocker" button on the circuit board. It can also be used to "repair" the set and "on/off" buttons.

Written By: Angela Penaherrera



## INTRODUCTION

Normally these buttons get damaged from pushing them too hard. The tactile switch stops bending and making contact, or it just bends all the way and wont stop changing your settings.



### TOOLS:

- [T8 Torx Screwdriver](#) (1)
- [2.5 mm Flathead Screwdriver](#) (1)
- [Tweezers](#) (1)



### PARTS:

- [G2 Surface mount Tactile Switch ON OFF switch](#) (1)

## Step 1 — Sennheiser SK100 G3 Bodypack Transmitter button



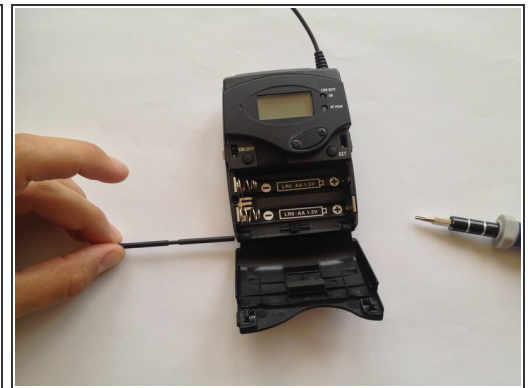
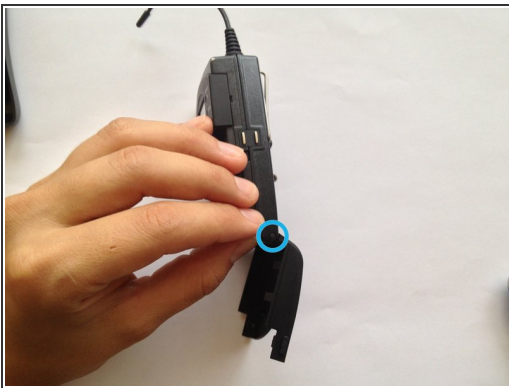
- Turn off the transmitter and take out the batteries.

## Step 2



- This is the button that's not working. All the other buttons have the same parts so if a different button is damaged, you can replace it the same way.

## Step 3



- On the lower side of the transmitter there is a small stick holding the compartment cover.
- Push it with your Torx Screwdriver so that the stick slides out, releasing the compartment cover.



## Step 4



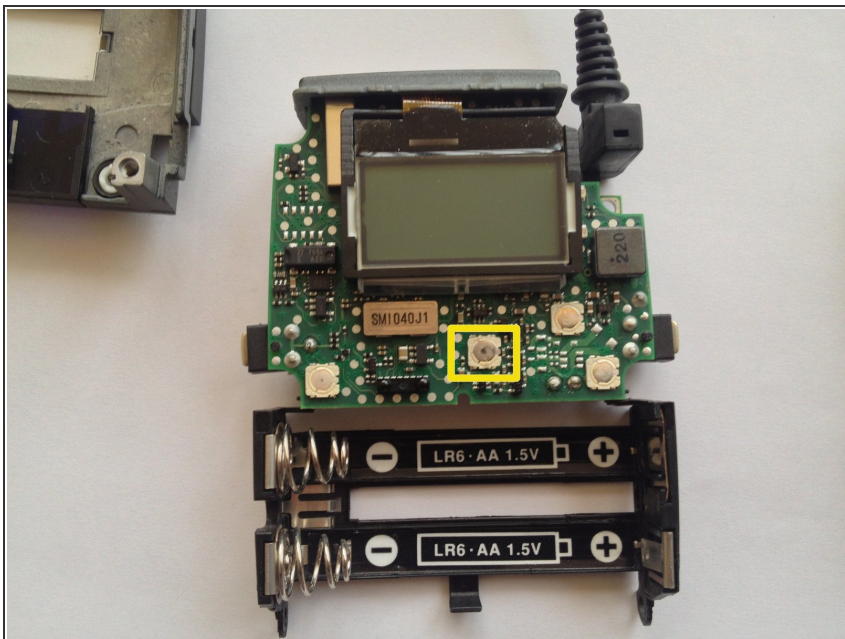
- Remove the 4 torx screws on the back.

## Step 5



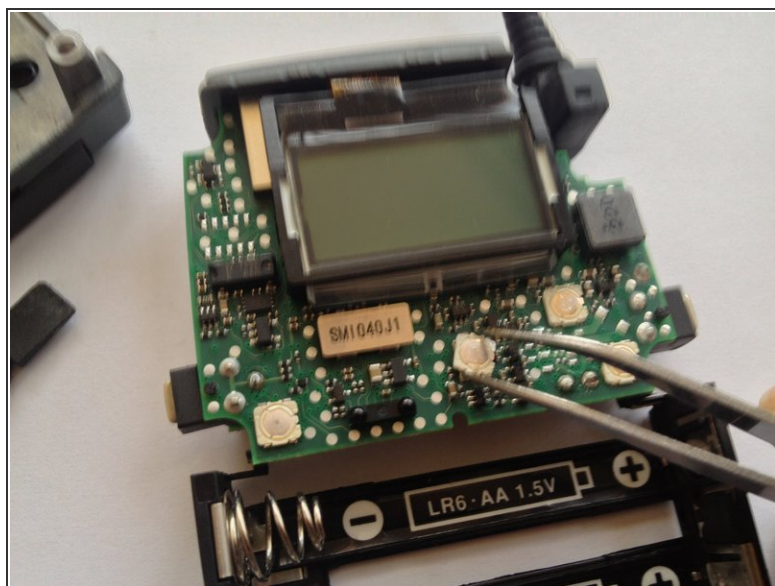
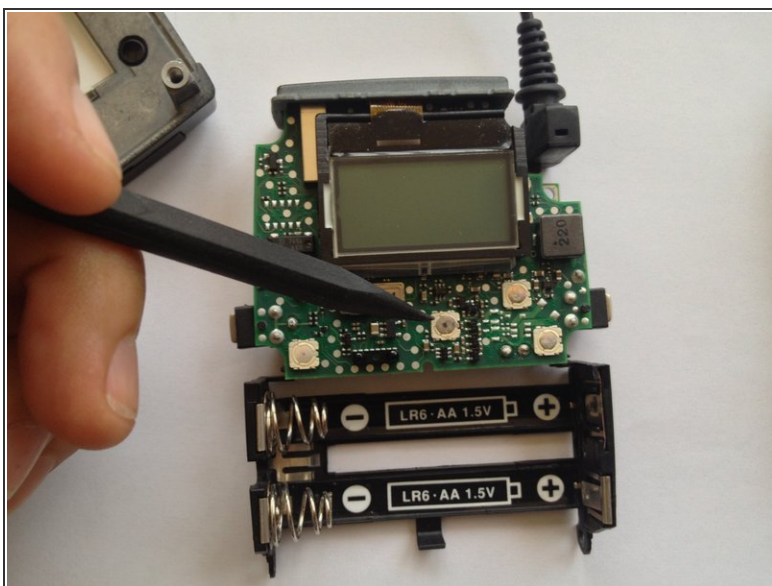
- Remove the back cover and remove one more torx screw on the upper left corner.

## Step 6



- Carefully remove the front cover and locate the tactile switch that's giving you a hard time.

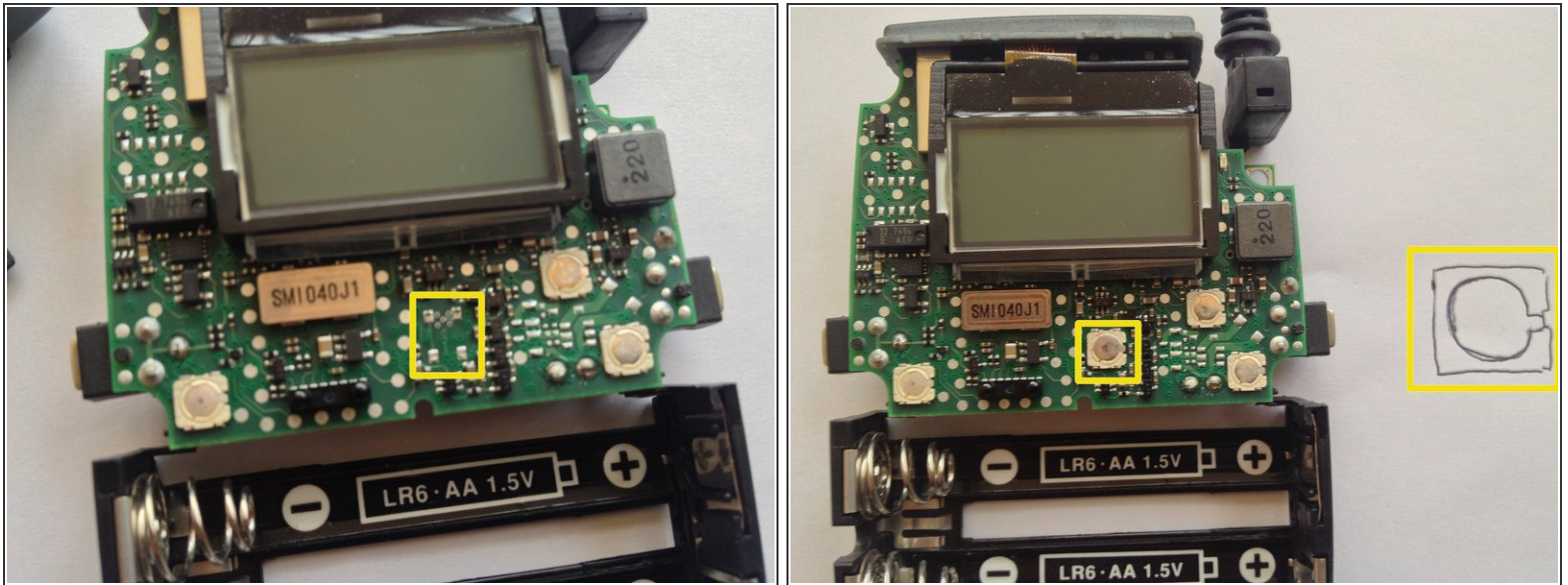
## Step 7



- With a spudger or a small flat head screwdriver, **carefully** remove tactile switch.
- It's not too hard to loosen up but you should do it softly.



## Step 8



- Notice the metal contacts and the direction of the tactile switches. The small metal tab faces your right.
- Place the new tactile switch. I didn't use glue but a tiny piece of 2mm adhesive sticker tape can work just as well.

To reassemble your device, follow these instructions in reverse order.