



iPad Mini Wi-Fi Logic Board Replacement

Use this guide to replace the logic board and...

Written By: Sam Goldheart



INTRODUCTION

Use this guide to replace the logic board and Lightning port. The Lightning port is soldered on to the logic board and the two must be replaced as a unit.

TOOLS:



iOpener (1)
Phillips #00 Screwdriver (1)
Spudger (1)
Tweezers (1)
iFixit Opening Tool (1)
Plastic Cards (1)

PARTS:

iPad mini Wi-Fi Logic Board (1)
iPad mini & mini 2 Adhesive Strips (1)

Step 1 — iOpener Heating



-  We recommend that you clean your microwave before proceeding, as any nasty gunk on the bottom may end up stuck to the iOpener.
- Place the iOpener in the center of the microwave.
 -  For carousel microwaves: Make sure the plate spins freely. If your iOpener gets stuck, it may overheat and burn.

Step 2



- Heat the iOpener for **thirty seconds**.
- Throughout the repair procedure, as the iOpener cools, reheat it in the microwave for an additional thirty seconds at a time.

⚠ Be careful not to overheat the iOpener during the repair. Overheating may cause the iOpener to burst. Do not attempt to heat over 100°C (212°F).

⚠ Never touch the iOpener if it appears swollen.

⚠ If the iOpener is still too hot in the middle to touch, continue using it while waiting for it to cool down some more before reheating. A properly heated iOpener should stay warm for up to 10 minutes.

Step 3



- Remove the iOpener from the microwave, holding it by one of the two flat ends to avoid the hot center.

⚠ The iOpener will be very hot, so be careful when handling it. Use an oven mitt if necessary.

Step 4 — Alternate iOpener heating method



ⓘ If you don't have a microwave, follow this step to heat your iOpener in boiling water.

- Fill a pot or pan with enough water to fully submerge an iOpener.
 - Heat the water to a boil. **Turn off the heat.**
 - Place an iOpener into the hot water for 2-3 minutes. Make sure the iOpener is fully submerged in the water.
 - Use tongs to extract the heated iOpener from the hot water.
 - Thoroughly dry the iOpener with a towel.
- ⚠ The iOpener will be very hot, so be careful to hold it only by the end tabs.
- Your iOpener is ready for use! If you need to reheat the iOpener, heat the water to a boil, turn off the heat, and place the iOpener in the water for 2-3 minutes.

Step 5 — Front Panel



- If your display glass is cracked, keep further breakage contained and prevent bodily harm during your repair by taping the glass.
- Lay overlapping strips of clear packing tape over the iPad's display until the whole face is covered.
 - ⓘ This will keep glass shards contained and provide structural integrity when prying and lifting the display.
- Do your best to follow the rest of the guide as described. However, once the glass is broken, it will likely continue to crack as you work, and you may need to use a metal prying tool to scoop the glass out.

⚠ Wear safety glasses to protect your eyes, and be careful not to damage the LCD screen.

Step 6



- Handling it by the tab, place the heated iOpener on the side of the iPad to the left of the home button assembly.
- Let the iOpener sit for about five minutes to soften the adhesive beneath the glass.

Step 7



- Carefully place a suction cup halfway up the heated side.
- Be sure the cup is completely flat on the screen to get a tight seal.
- While holding the iPad down with one hand, pull up on the suction cup to slightly separate the front panel glass from the rear case.

⚠ Be careful to only lift the glass enough to insert an opening pick—any more and you may risk cracking the glass.

Step 8



- While holding the glass up with the suction cup, slide the point of an opening pick into the gap between the glass and body of the iPad.
⚠ Don't insert the opening pick any deeper than the black bezel on the side of the display. Inserting the pick too far may damage the LCD.
- Pull the suction cup's plastic nub to release the vacuum seal and remove the suction cup from the display assembly.

Step 9



- Reheat and reapply the iOpener.
⚠ Be careful not to overheat the iOpener during the repair procedure. Always wait at least ten minutes before reheating the iOpener.
- Let it rest for a few minutes to reheat the left edge of the iPad.

Step 10



- Place a second opening pick alongside the first and slide the pick down along the edge of the iPad, releasing the adhesive as you go.

⚠ Throughout the rest of the procedure, if you encounter significant resistance to sliding picks beneath the glass, stop and reheat the section you're working on. Forcing the picks risks cracking the glass.

Step 11



- Continue moving the opening pick down the side of the display to release the adhesive.
- If the opening pick gets stuck in the adhesive, "roll" the pick along the side of the iPad, continuing to release the adhesive.

Step 12



- Take the first pick you inserted and slide it up toward the top corner of the iPad.
- If you can see the tip of the opening pick through the front glass, don't panic—just pull the pick out a little bit. Most likely, everything will be fine, but try to avoid this as it may deposit adhesive on the front of the LCD that is difficult to clean off.

Step 13



- Reheat the iOpener and place it on the top edge of the iPad, over the front-facing camera.
⚠ Be careful not to overheat the iOpener during the repair procedure. Wait at least ten minutes before reheating the iOpener.
- ① If you have a flexible iOpener, you can bend it to heat both the upper left corner and the upper edge at the same time.

Step 14



- Slide the opening pick around the top left corner of the iPad to separate the adhesive.

Step 15

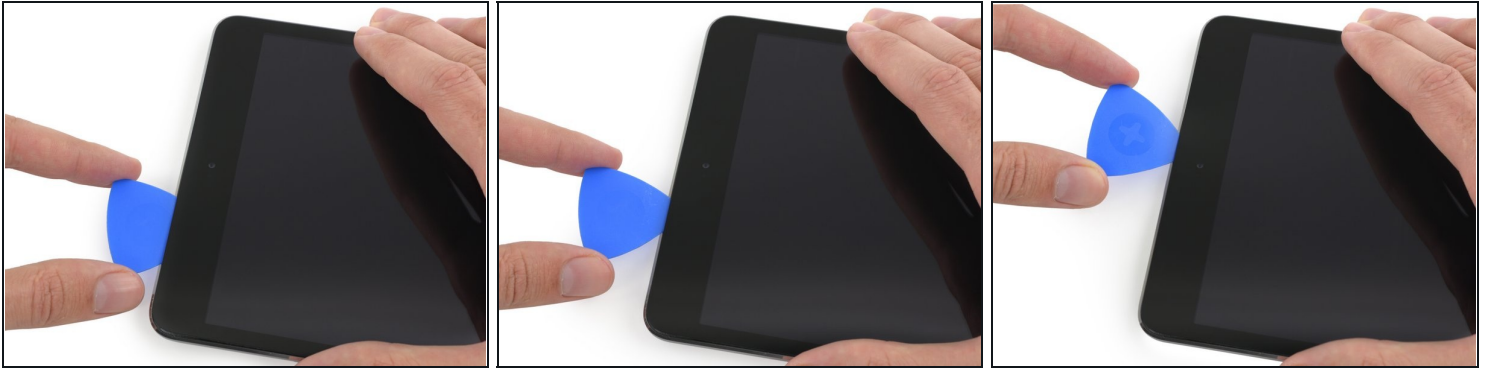


- Slide the opening pick along the top edge of the iPad, stopping just before you reach the camera.

ⓘ The third image shows where the front-facing camera and housing are in the iPad.

⚠ Avoid sliding the opening pick over the front-facing camera, as you may smear adhesive onto the lens or damage the camera. The following steps will detail how to best avoid disturbing the front-facing camera.

Step 16



- Pull the pick out slightly, and slide the very tip gently along the top of the front-facing camera section of the top edge.

Step 17



- Leave the opening pick in the iPad slightly past the front-facing camera.
- ① Take a second pick and insert it to the left of the camera, where the first pick just was. Slide it back to the corner to completely cut any remaining adhesive.
- Leave the second pick in place to prevent the corner adhesive from re-sealing as it cools.

Step 18



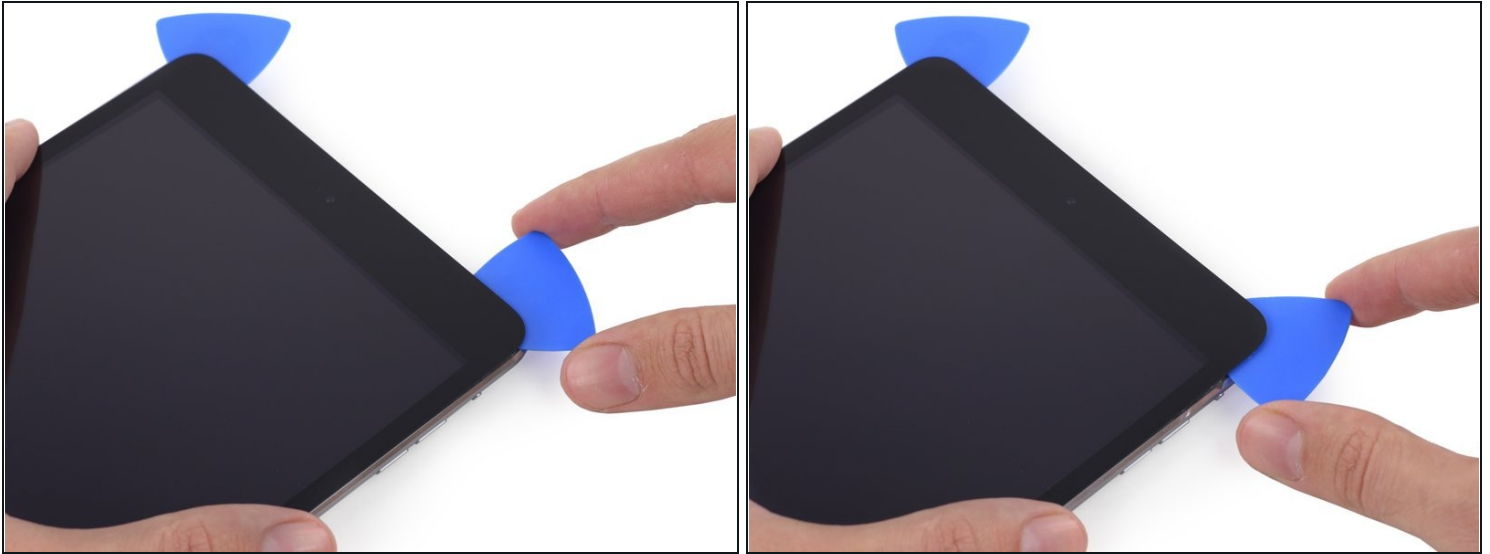
- Insert the previous pick deeper into the iPad and slide it away from the camera toward the corner.

Step 19



- Leave the three picks in the corners of the iPad to prevent re-adhering of the front panel adhesive.
- Reheat the iOpener and place it on the remaining long side of the iPad—along the volume and lock buttons.

Step 20



- Slide the top right opening pick around the corner to fully release the top edge of the glass.
- Leave this pick in place to keep the adhesive from re-sealing itself, and grab a new pick for the next step.

Step 21



- Insert a new opening pick and slide it to the middle of the right edge of the iPad, releasing the adhesive as you go.

Step 22



- Continue to slide the pick down the right edge of the iPad, releasing the adhesive.

Step 23



- Leave the opening picks in place and reheat the iOpener.
⚠ Remember not to overheat the iOpener—no more than once every ten minutes.
- Set the reheated iOpener on the home button end of the iPad and let it rest for a few minutes to soften the adhesive beneath the glass.

Step 24



- Slide the lower left pick to the lower left corner to cut the adhesive on that corner.
- Leave the pick at the corner. Do not pry any farther, and do not remove the pick from the iPad.
- ⓘ There are quite a few things to avoid beneath the lower bezel, so study the third image closely:
 - Antennas
 - Home button cavity
 - Digitizer cable
- The following steps will direct you where to pry to avoid damage to these components. Only apply heat and pry where directed.

Step 25



- ① Leave the pick from the last step in place to prevent the adhesive from re-sealing.
- With a new pick, slice gently over the left-hand antenna, stopping before the home button.
 - ⚠ Only slide the pick from the outer edge toward the center of the iPad. Do not move the pick back toward the outer edge, as moving in this direction may damage the antenna.
- ① If you need to slide the pick over the lower section more than once, remove it and re-insert at the outer edge, and slide inwards.
- Leave the pick in place before moving on.

Step 26



- Insert the tip of one last pick next to the previous step's pick, and slide it beneath the home button.

⚠ Stop about an inch from the right-hand side to avoid cutting the digitizer cable.

- Insert the pick slightly deeper and work it back toward the home button.

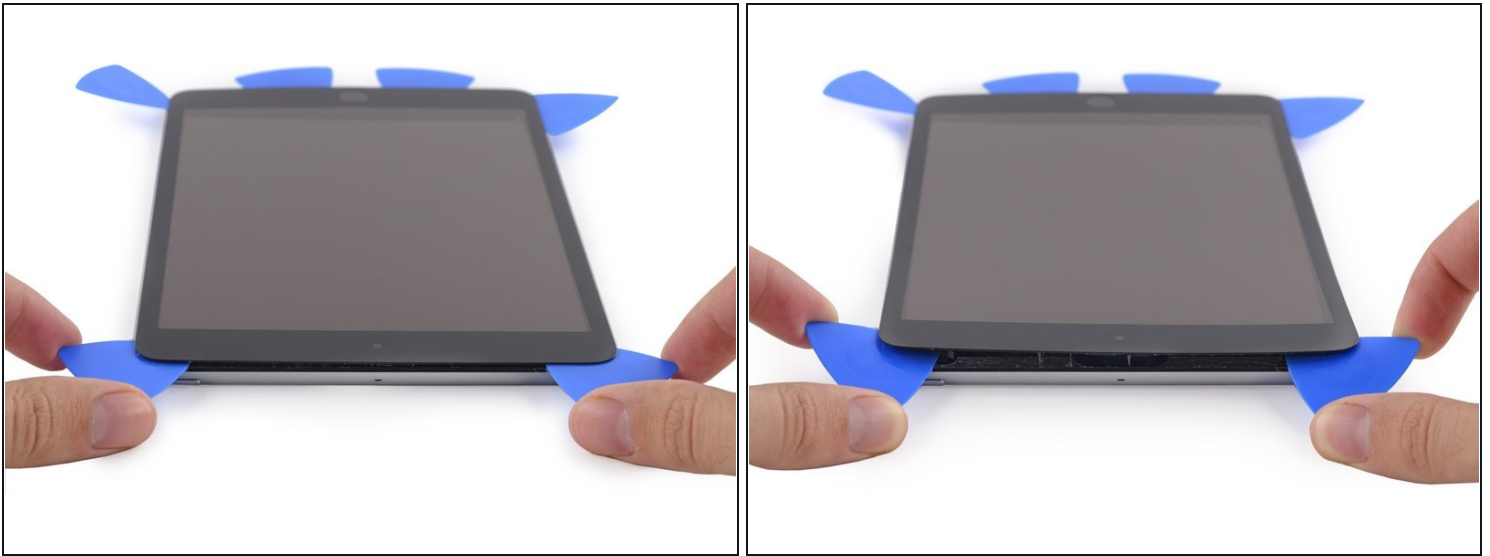
⚠ Again, be sure to only slide the pick toward the center of the iPad when it is fully inserted; otherwise you may damage the antenna beneath the glass.

Step 27



- ① Reheat and reapply the iOpener to the top bezel of the iPad.

Step 28



- ⚠ Be very careful with this step. Take your time and ensure the adhesive is hot and soft, and that you've been through all of the adhesive with an opening pick. Don't be afraid to stop and reheat.
- At the top of the iPad opposite the home button, you should have a pick lodged into each corner. Twist the picks to lift the glass slightly, separating the last of the adhesive along all four edges.
- ⚠ If you encounter a significant amount of resistance, stop twisting. Leave the picks in place, reheat, and reapply the iOpener to the problem areas, and run a pick through the sticking point one more time.

Step 29



- Lift slowly and gently to further detach the adhesive along the lower edge.

Step 30



- Once all of the adhesive has been separated, open the front glass like a page in a book and rest it on your workspace.
- ☑ If reusing the front panel assembly during reassembly, you will need to replace the display adhesive. Use our [display adhesive application guide](#) to reapply your display adhesive and reseal your device.

Step 31



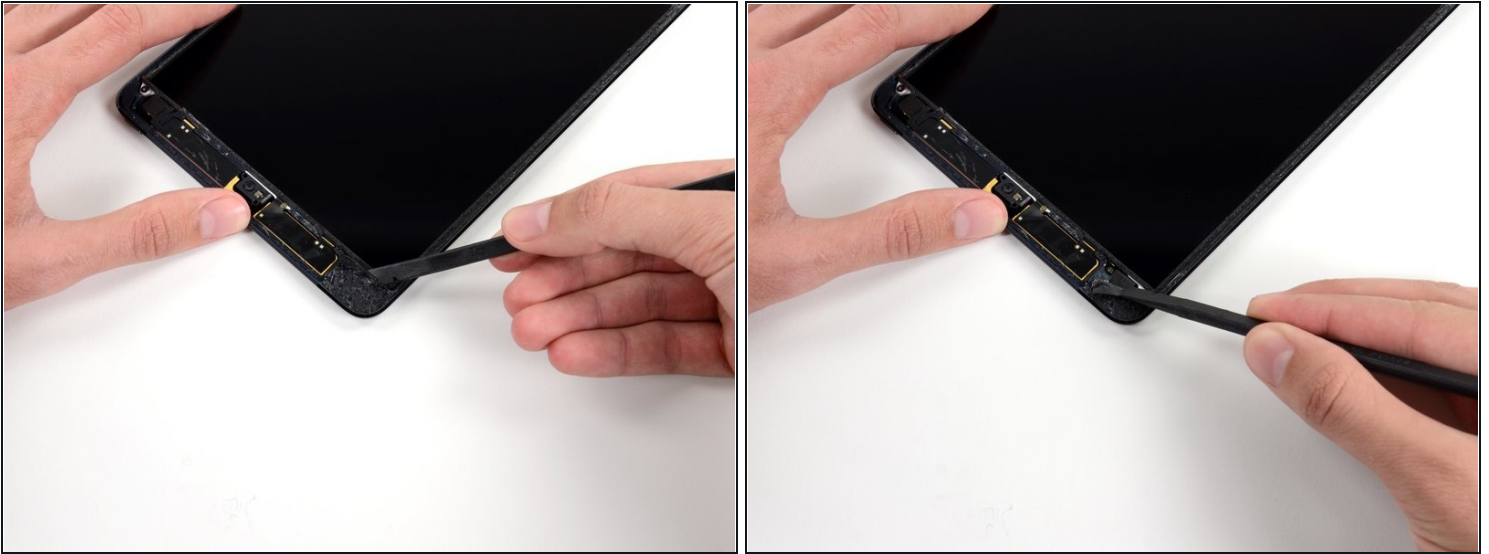
- The front-facing camera housing may stick to the front panel; peel up the housing and place it back over the camera to protect it.
- Rock the camera housing up on one edge to free it from the adhesive and remove it from the front panel.
- Return the front-facing camera housing to its recess in the rear case.

Step 32 — LCD Assembly



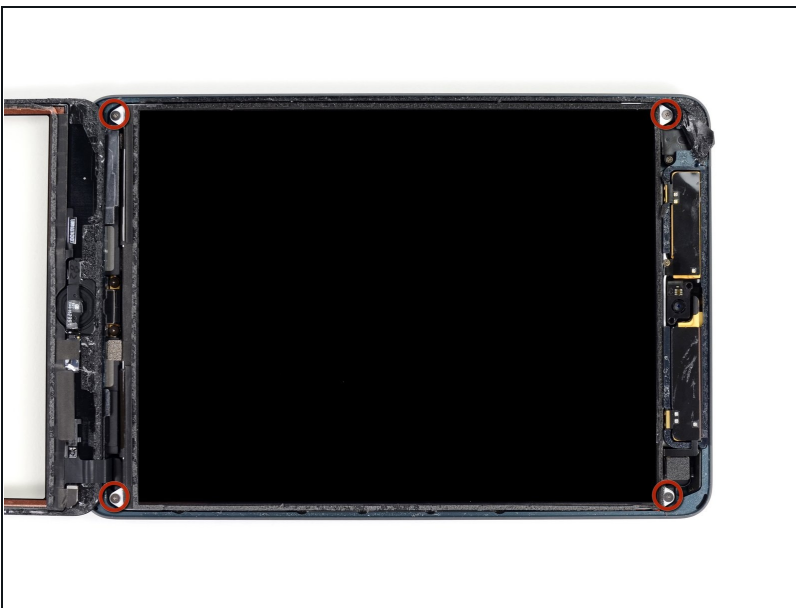
- ① Small pieces of foam tape cover the top and bottom right-hand screws securing the LCD to the rear case.
- Use tweezers to peel up and remove the rectangular piece of foam tape covering the top right LCD screw.
- Remove the triangular tape covering the lower right LCD screw.

Step 33



- ① The top left LCD screw may be covered by adhesive tape from the front panel.
- If the tape is present, use the flat end of a spudger to pry the tape up and away, exposing the LCD screw beneath.

Step 34



- Remove the four 3.9 mm Phillips #000 screws securing the LCD to the rear case.

Step 35



- Use a pair of tweezers to peel up the small piece of tape connecting the LCD frame to the right speaker.

Step 36



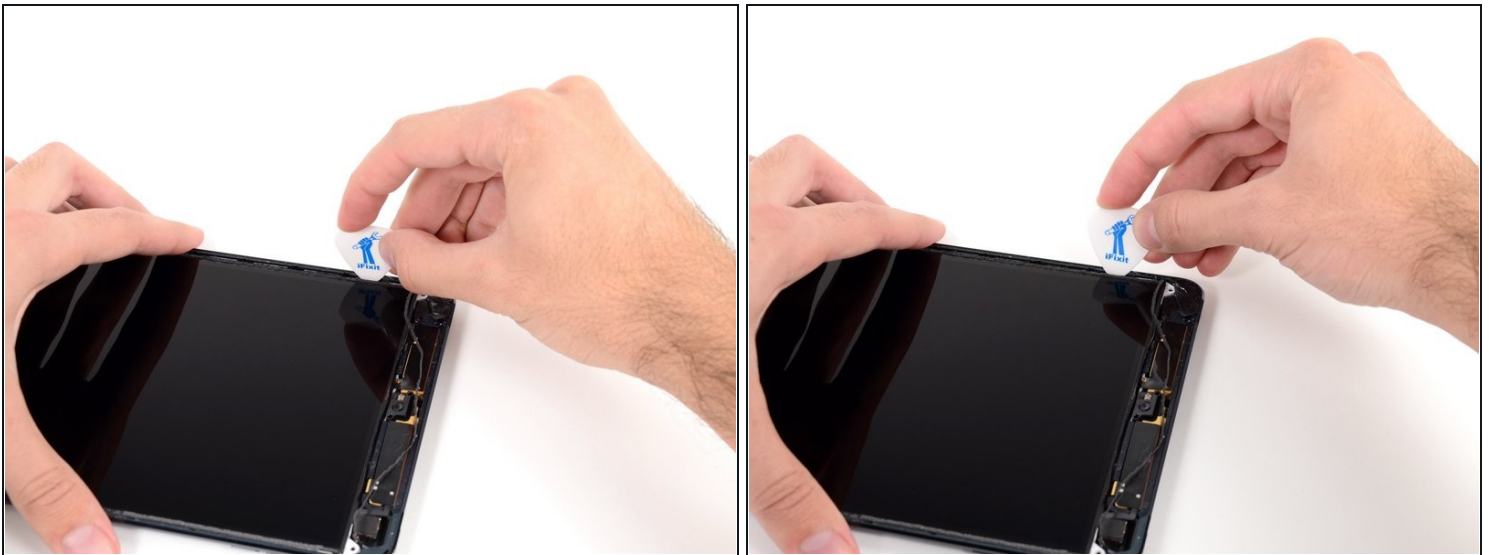
- ① A thin strip of foam tape on the LCD frame is covering a piece of tape connecting the LCD to the panel beneath it. To proceed, you'll have to break and peel up some of the foam tape to expose the tape hidden beneath.
- Use a pair of thin tweezers to pull up the top of the foam tape surrounding the LCD.
⚠ Be careful not to touch the LCD with the tweezers, as you may damage the display.
- Use the tweezers to peel the foam tape up to expose the top of the LCD.

Step 37



- Insert the tip of a spudger between the LCD frame and the tape on the top of the LCD.
- Slide the spudger along the space between the LCD frame and tape, separating the tape from the LCD frame.

Step 38



- ① The LCD is glued to the metal LCD shield plate behind it along the top, left, and right edges. In order to safely loosen this adhesive, you'll be using a guitar pick to shift the LCD a couple of millimeters left and right several times.
- Insert a guitar pick into the gap between the LCD and rear case, near the top of the left side of the LCD.
- Bend the pick slightly away from the iPad, just enough to spread the gap between the LCD and rear case.

Step 39



- Insert the guitar pick into three more locations down the left side of the LCD and bend it over in each location, to slide the LCD over to the right side of the rear case.

Step 40



- Now switch to the right side of the LCD, and pry with the guitar pick in several places along the side to shift the LCD back to the left.
- ① Repeat this and the previous step a few times, until the LCD is easily moved left and right.

Step 41



- ⓘ In the next few steps, you'll be sliding a spudger between the LCD and the metal backing plate to fully separate the LCD from the adhesive beneath.
- Insert the flat end of a spudger between the LCD frame and the metal backing plate.
⚠ Be sure to get the spudger between the LCD frame and backing plate, and not beneath the plate. Prying up on the plate will damage it, because it is screwed down to the rear case beneath the LCD.

Step 42



- Starting at the top right of the device, slide the spudger in between the LCD frame and metal backing plate, which will separate the adhesive as you push.
 - ⓘ The goal is to separate the adhesive, not to pry the LCD up, so keep the pointed tip of the spudger as low as possible to prevent bending the LCD.
- ⚠ If inserting the spudger causes the corner of the LCD to bend up, repeat the steps with the guitar pick to further loosen the adhesive.

Step 43



- Repeat the previous procedure along the top of the LCD.
- Insert the flat end of the spudger between the LCD frame and metal backing plate and gently push the spudger in across the top of the device, separating adhesive.

Step 44



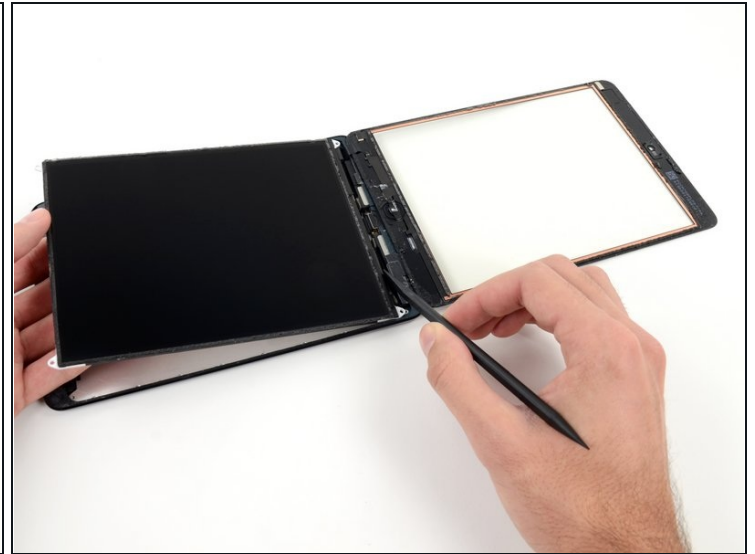
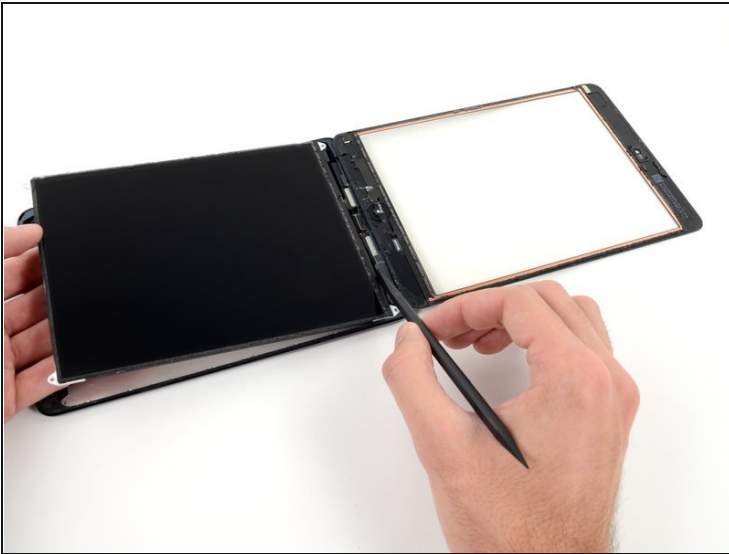
- Continue with the left side of the LCD: insert the flat end of the spudger between the LCD and shield plate and insert the spudger as far as it will go.
- ⓘ At this point the LCD should be loosened from the adhesive holding it. If it is not, re-insert the spudger on the right side or top to fully free the LCD.

Step 45



- Lift the LCD up a couple inches from the rear case to ensure it's free from the adhesive.

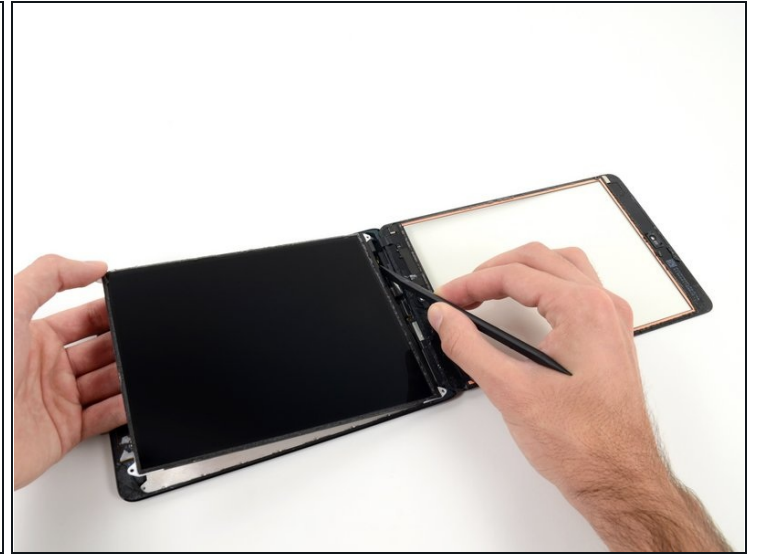
Step 46



i Two wide strips of tape connect the LCD to the speakers.

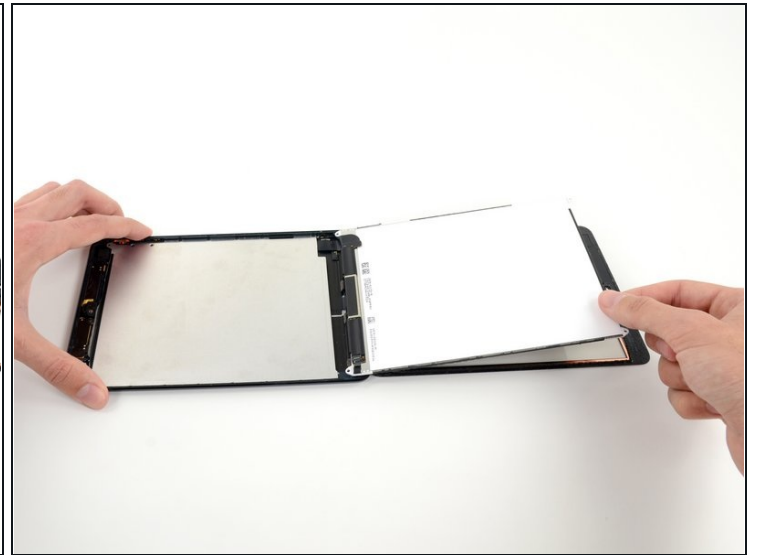
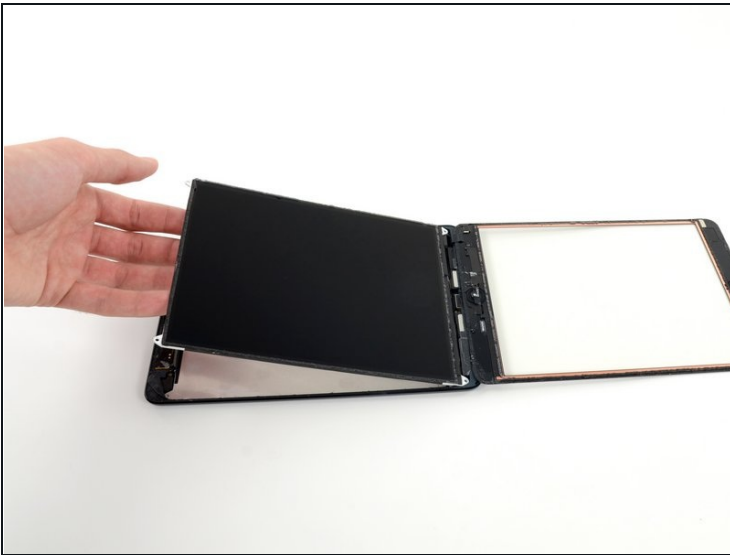
- While holding the LCD with one hand, Insert the flat end of a spudger into the gap between this tape and the left speaker.
- Gently pull the LCD away from the speakers while rotating the spudger outward to separate the tape from the speaker.

Step 47



- Insert the flat end of the spudger into the gap between the right speaker and the LCD tape.
- While pulling the LCD away from the speakers, rotate the spudger outward, widening the gap and releasing the tape from the speaker.

Step 48



- Flip the LCD over and rest it on top of the front panel glass.

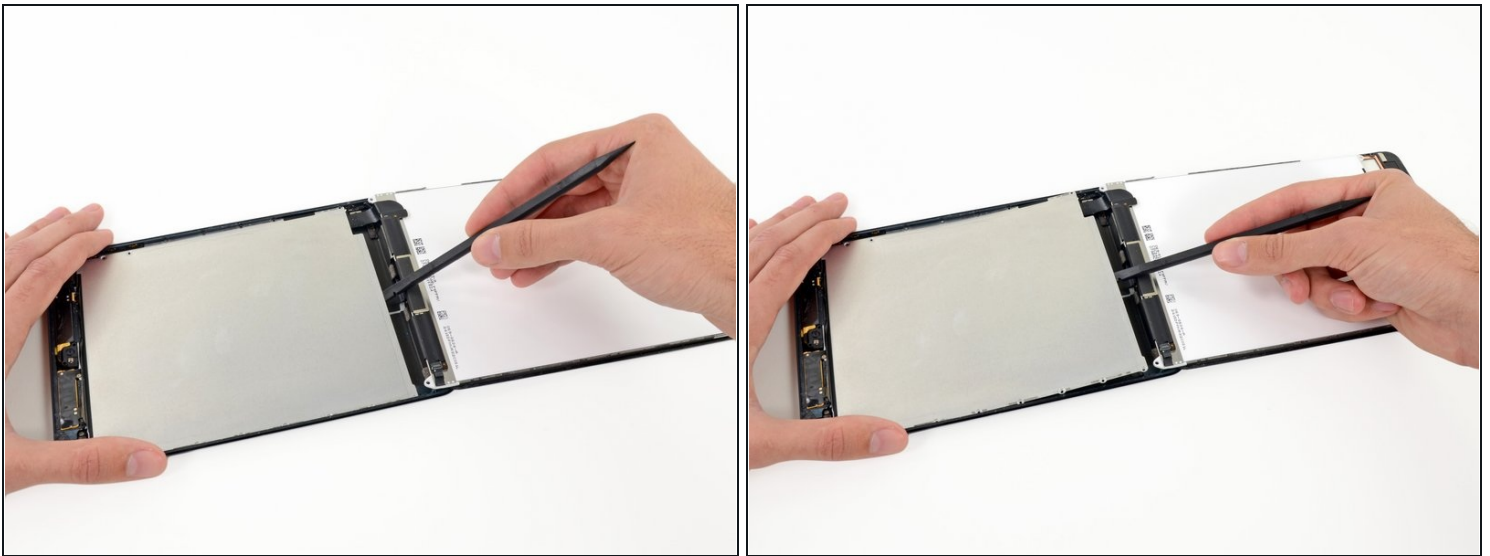
⚠ Do not attempt to remove the LCD from the iPad, as it is still connected by its data cable.

Step 49 — LCD Shield Plate



- Remove the following screws securing the LCD shield plate to the rear case of the iPad:
 - Two 2.6 mm Phillips #00
 - Thirteen 1.7 mm Phillips #00
 - One additional 1.7 mm Phillips #00 on some devices.

Step 50



- Insert the flat end of a spudger underneath the center of the LCD shield plate from the bottom end of the iPad.
- Pry up on the spudger to free the plate from the sides of the rear case.

Step 51



- Remove the LCD shield plate from the iPad.

Step 52 — Battery Connector



- Remove the three 1.3 mm Phillips #00 screws securing the connector shield to the logic board.

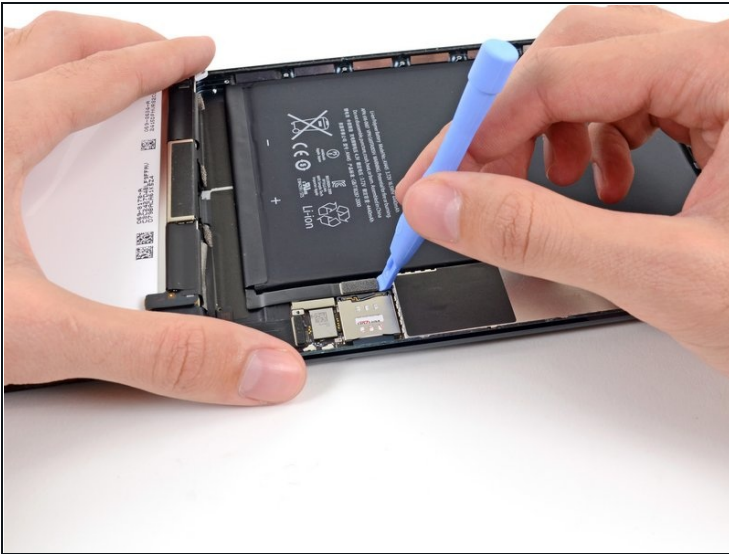
⚠ Be sure to not substitute these three screws with any other screws, specifically the screws securing the LCD shield plate to the rear case of the iPad. Any slightly longer screws may strip the screw holes and result in irreparable damage to the logic board.

Step 53



- Use a pair of tweezers to grasp and remove the connector shield from the iPad.

Step 54



- Use a plastic opening tool to gently pry the battery connector up from its socket on the logic board.

⚠ Be very careful to only pry up on the battery connector and not on the socket itself. If you pry up on the logic board socket, you may break the connector entirely.

Step 55 — LCD



- Use a plastic opening tool to pry the LCD connector from its socket on the logic board.

⚠ Do not pry against the large IC next to the connector, or you may break it. Gently pry from the side of the connector as shown.

Step 56



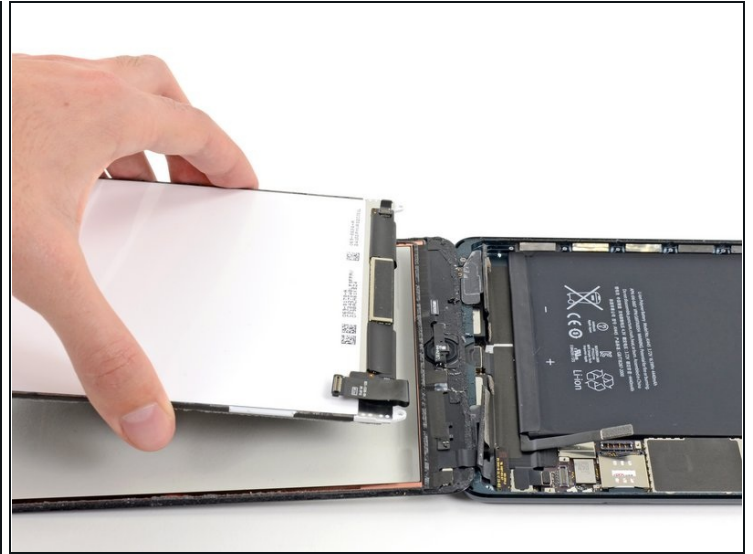
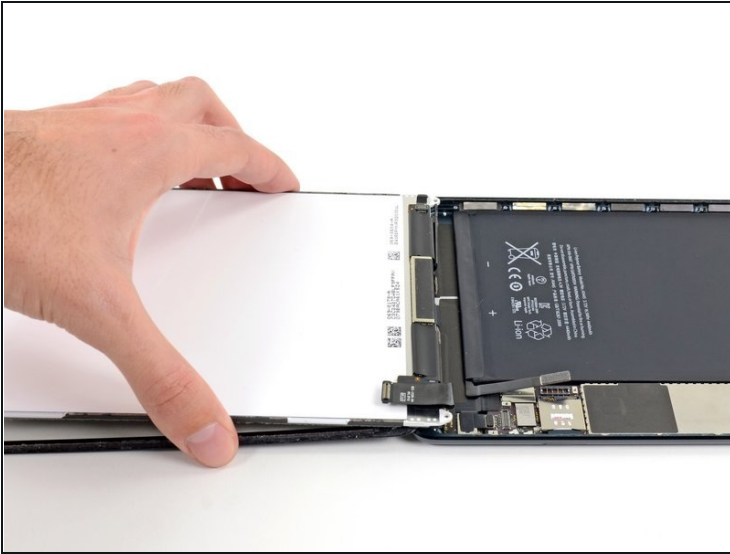
- ☑ The LCD is still connected to the rest of the iPad by two wide strips of adhesive tape that run up from the inside of the rear case to the front bottom LCD frame.
- While holding the LCD with one hand, insert the flat end of a spudger between the LCD and tape on the iPad's right side.
- Slide the spudger outward, separating the tape, while gently lifting up on the LCD to pull it away from the tape.
- ⓘ It may help to twist the spudger, to spread the gap the rest of the way and separate the LCD from the tape.

Step 57



- While still holding the LCD up with one hand, move on to the iPad's left side and repeat the previous step's procedure to separate the second piece of tape.
- Insert the flat end of a spudger between the LCD frame and tape, and slide outward while gently lifting up on the LCD.

Step 58



- Lift and remove the LCD from the iPad Mini.

Step 59 — Front Panel Assembly



⚠ Be very careful to pry evenly on the digitizer connector, and not on the socket at all. The socket and connector are very delicate and if you damage either, your digitizer won't work.

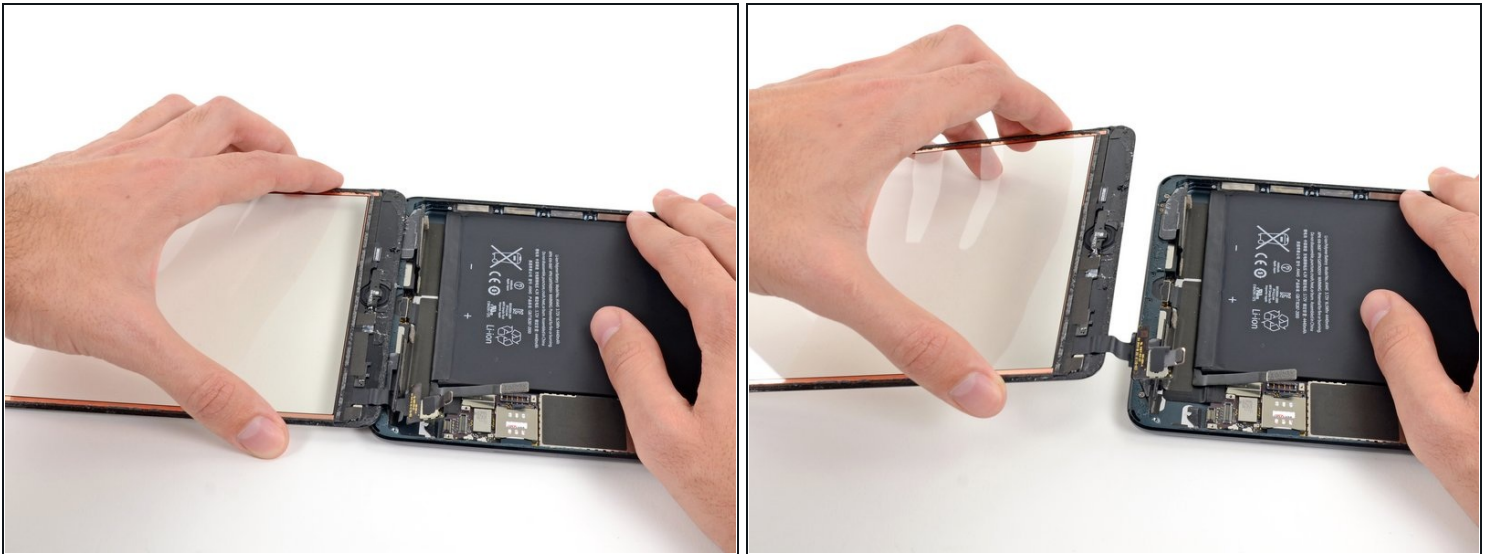
- To minimize stress on the socket, try prying under the short edge of the connector, rather than the long edge which is shown in these images.
- Gently pry the digitizer connector up from its socket on the logic board.

Step 60



- Gently pry the digitizer cable board up from the rear case.

Step 61



- Lift and remove the front panel from the iPad.

Step 62 — Battery



- Reheat the iOpener in the microwave for **one minute**.
 - ⚠ Remember to be careful not to overheat the iOpener during the repair procedure. Wait at least two minutes before reheating the iOpener, and never microwave it for more than one minute.
- Place the heated iOpener on the back of the iPad, along the center. Let it sit there for 90 seconds to soften the battery adhesive.
- Move the iOpener to the right of the back of the iPad (the side opposite the rear-facing camera), and let the iOpener sit for another 90 seconds.
 - If the iOpener cools significantly between sittings, reheat it for another minute.

Step 63



⚠ Throughout the following procedure, you'll be sliding thin plastic cards between the battery and rear case of the iPad, to separate the adhesive securing the battery in place. Be careful to keep the cards as flat as possible to avoid bending the battery, which may damage it and cause it to release dangerous chemicals.

- Flip the iPad back over and insert a [plastic card](#) between the top left battery and the rear case.
- ① If you encounter significant resistance, re-heat the iOpener and repeat the previous step to give the adhesive more time to soften.

Step 64



- Press the card in further, breaking as much of the adhesive holding in the battery as you can.

Step 65



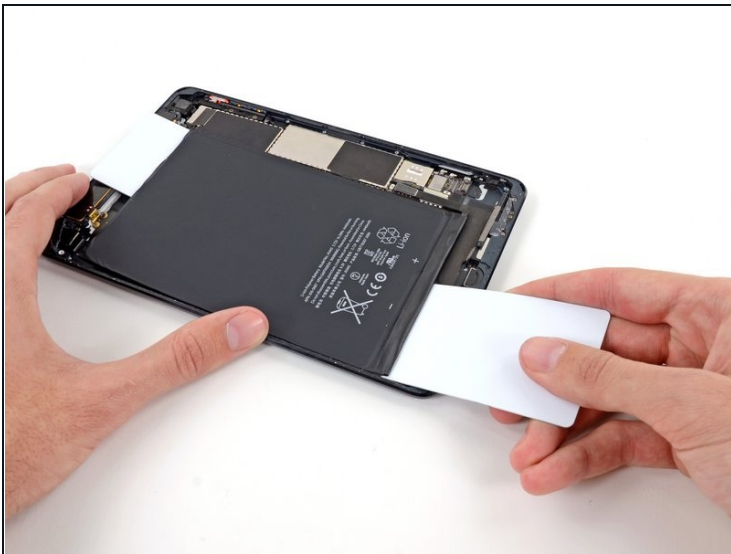
- Remove the plastic card and reinsert it underneath the top right corner of the battery.

Step 66



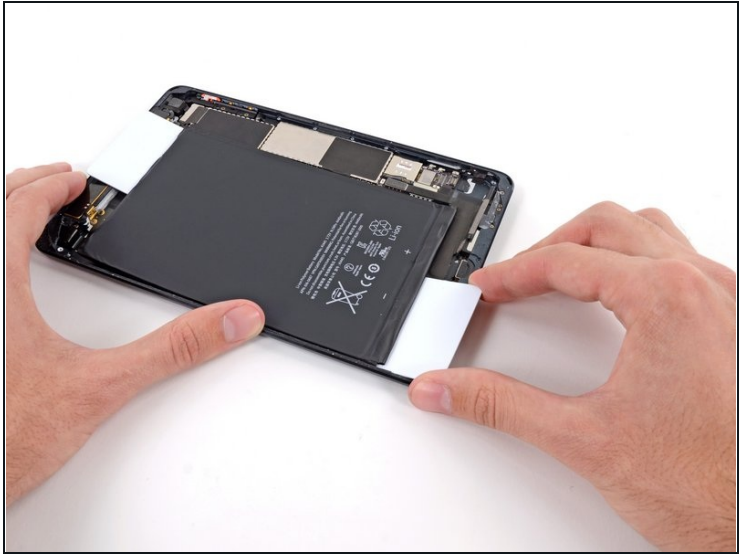
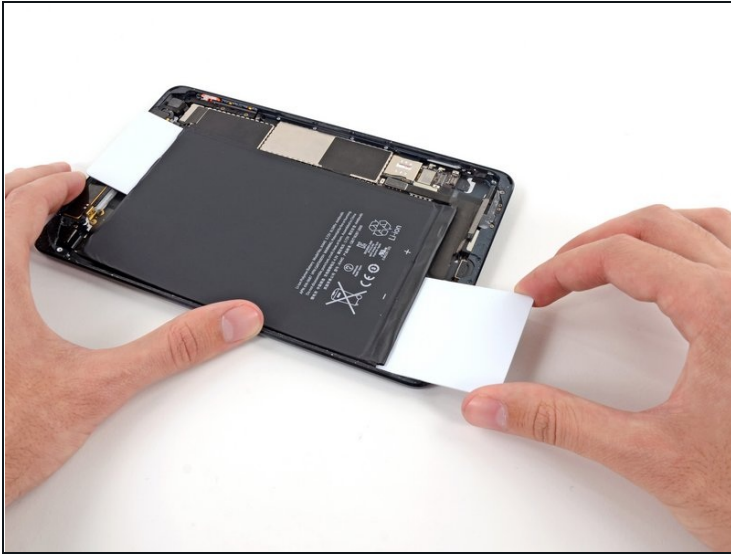
- Again, press the card in further, to break more of the adhesive behind the battery.
- Leave this card in place to prevent the adhesive from resetting.

Step 67



- Insert a second plastic card beneath the bottom left corner of the battery.

Step 68



- Slowly push the card in further, breaking more of the adhesive between the battery and the rear case.

Step 69



- Remove the card and reinsert it, beneath the bottom right corner of the battery.

Step 70



- Push the card further underneath the battery.

Step 71



- Grasp both cards and slowly pull the right side of the battery up about two inches from the rear case.
- Peel slowly and try to keep the battery as straight as possible.

Step 72



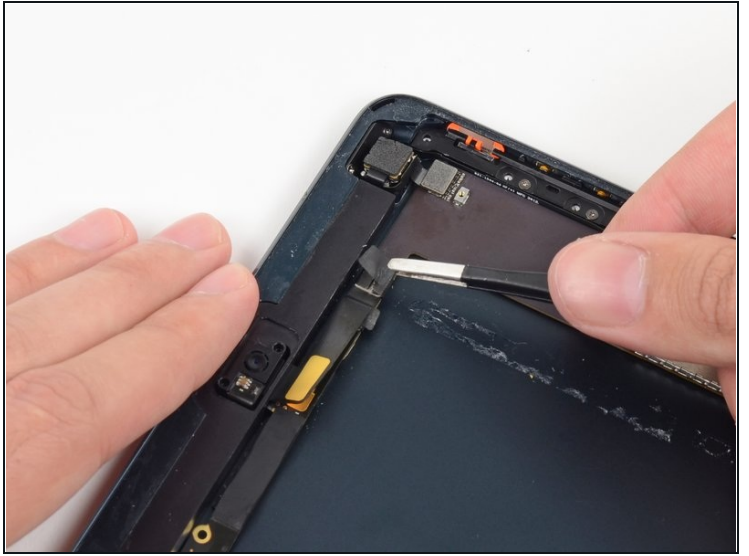
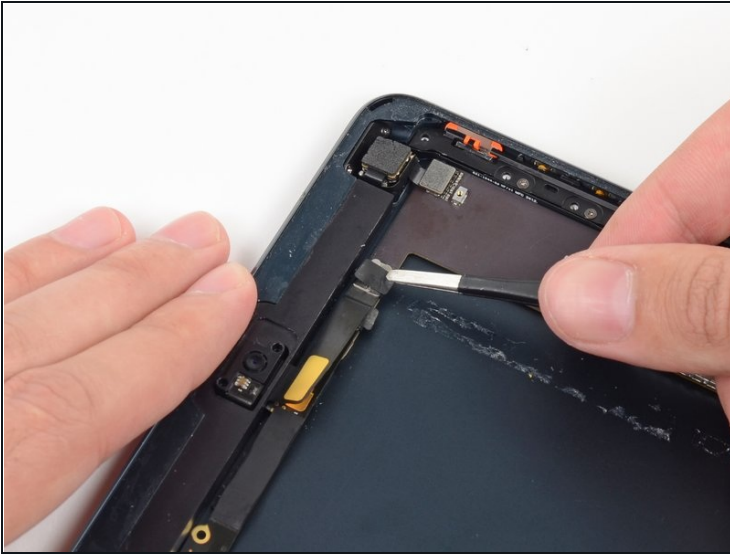
- While lifting the right side of the battery up with one hand, use a plastic card to cut any adhesive still holding the battery down to the rear case.

Step 73



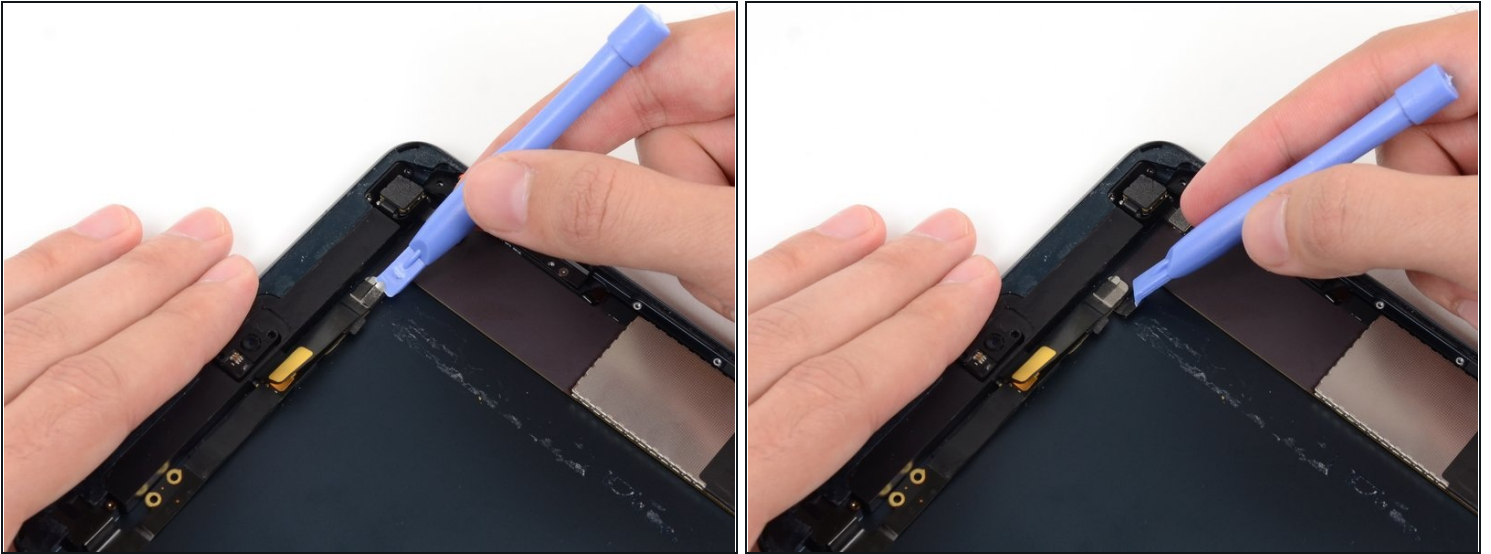
- Lift and remove the battery from the iPad.

Step 74 — Logic Board Assembly



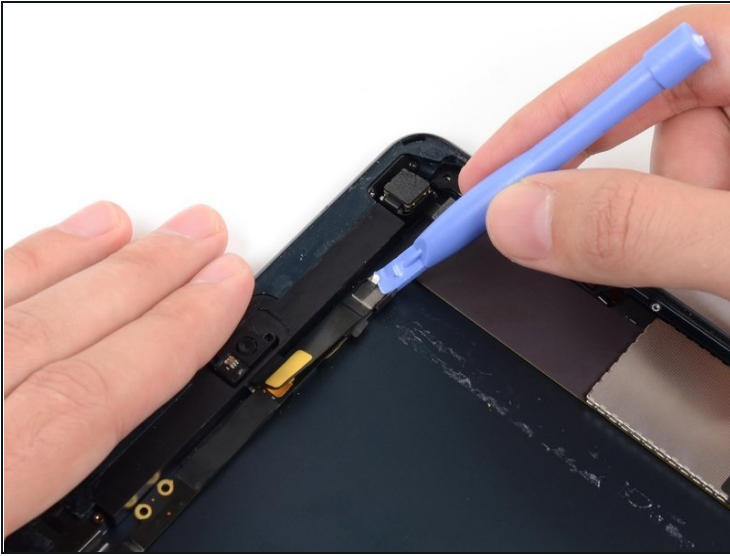
- Use tweezers to peel up and remove the small piece of tape covering the front-facing camera cable connector.

Step 75



- ① The front-facing camera cable connector is secured with pieces of tape that wrap up around the sides of the cable and are fastened to two small metal plates.
- Use a plastic opening tool to gently pry the lower metal plate up from the front-facing camera cable connector.
- Being careful not to break the plate or the tape attached to it, pry it up and fold it away from the front-facing camera cable connector.

Step 76



- Gently pry the second (upper) metal plate up from the front-facing camera cable connector.
- Again, carefully pry the plate up and away from the front-facing camera cable connector.

Step 77



- Use a plastic opening tool to pry the front-facing camera cable's connector up from its socket on the logic board.

Step 78



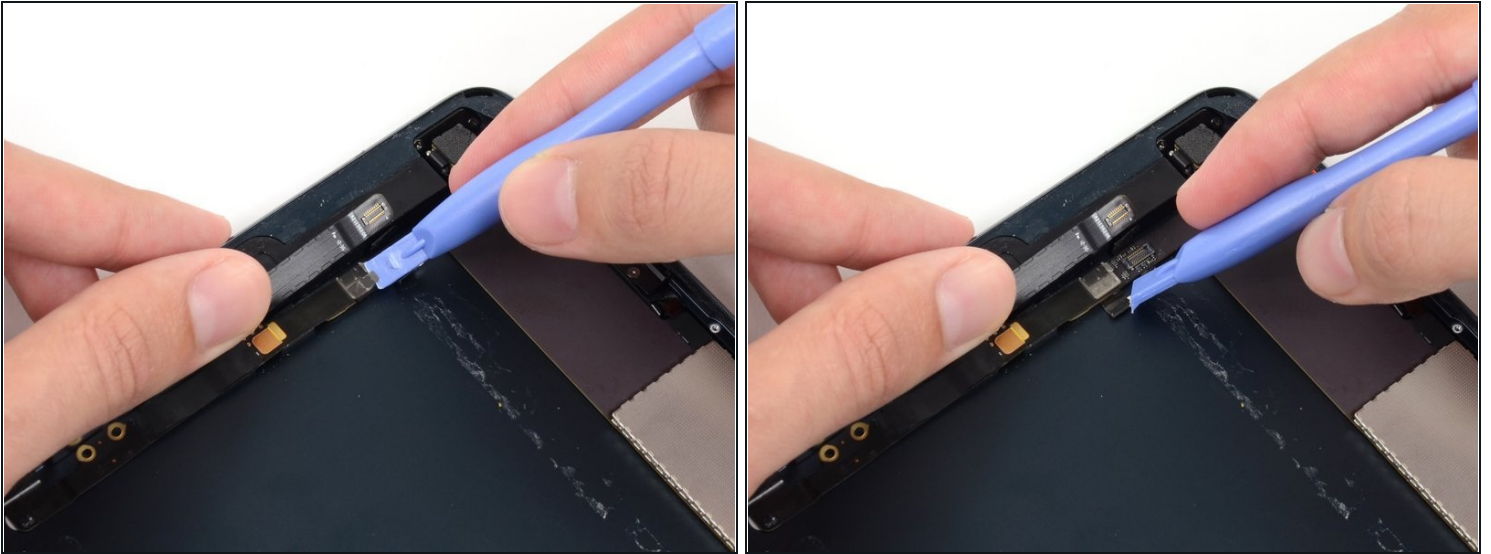
- Gently fold the front-facing camera cable up and out of the way of the logic board.

Step 79



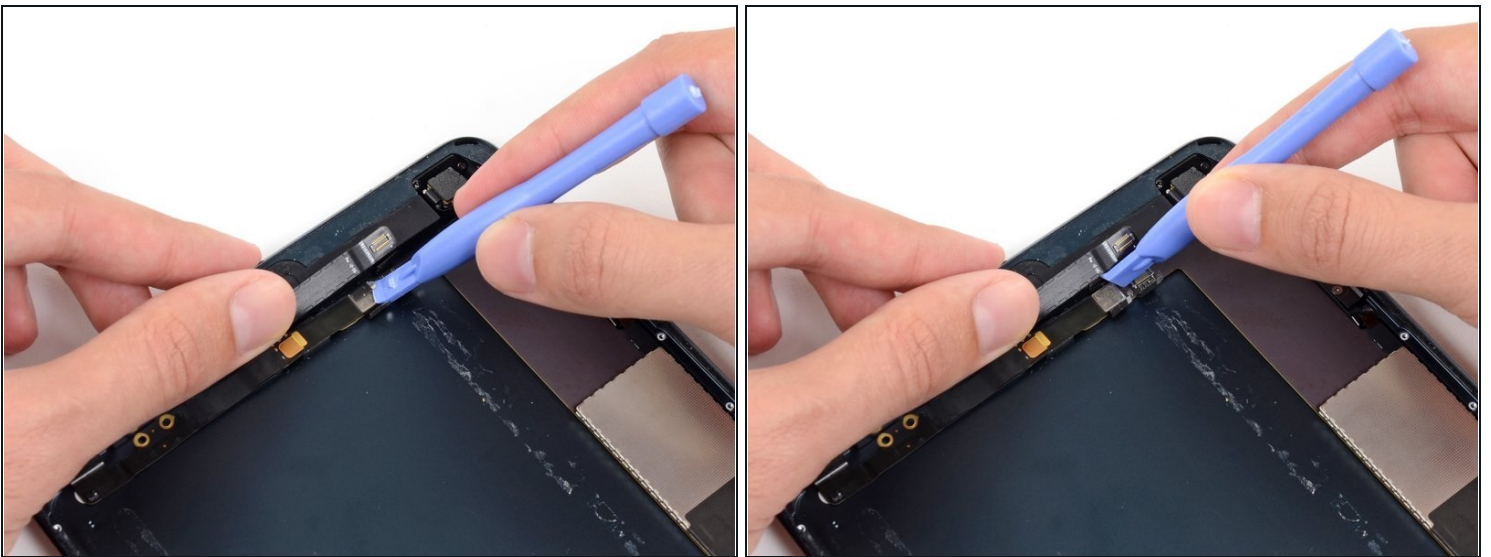
- Use tweezers to peel up and remove the small piece of tape covering the headphone jack cable connector.

Step 80



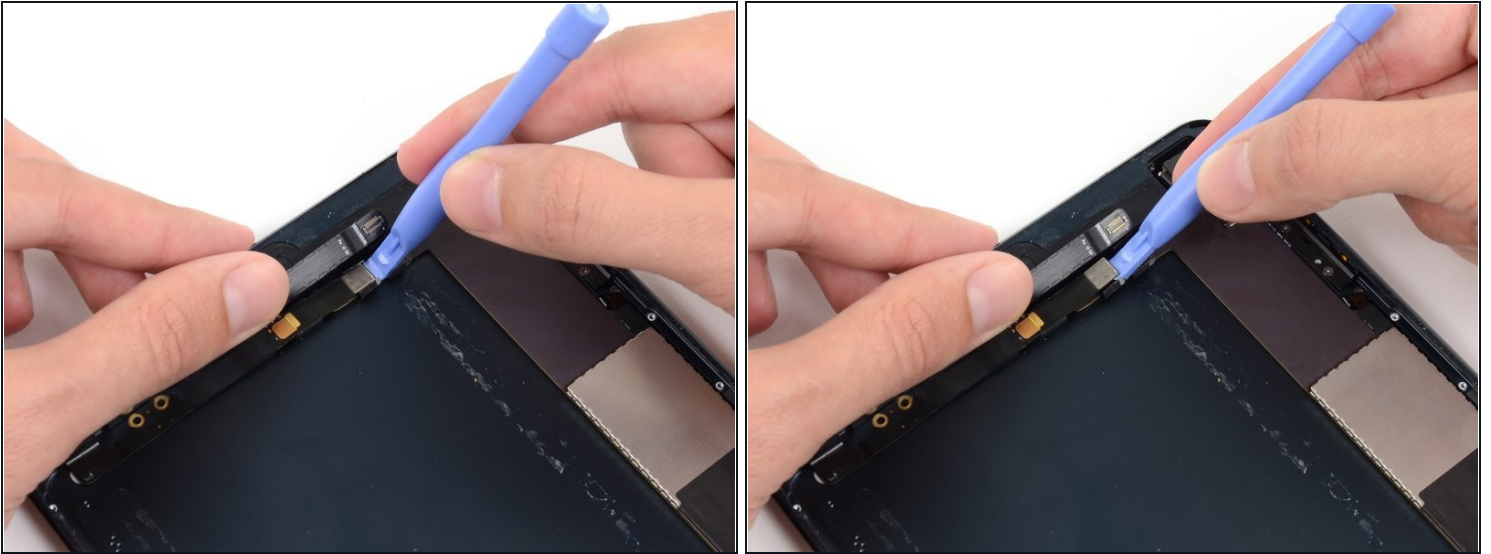
- Use a plastic opening tool to gently pry the lower metal plate up from the headphone jack cable connector.
- Being careful not to break the plate or the tape attached to it, pry it up and fold it away from the headphone jack cable connector.

Step 81



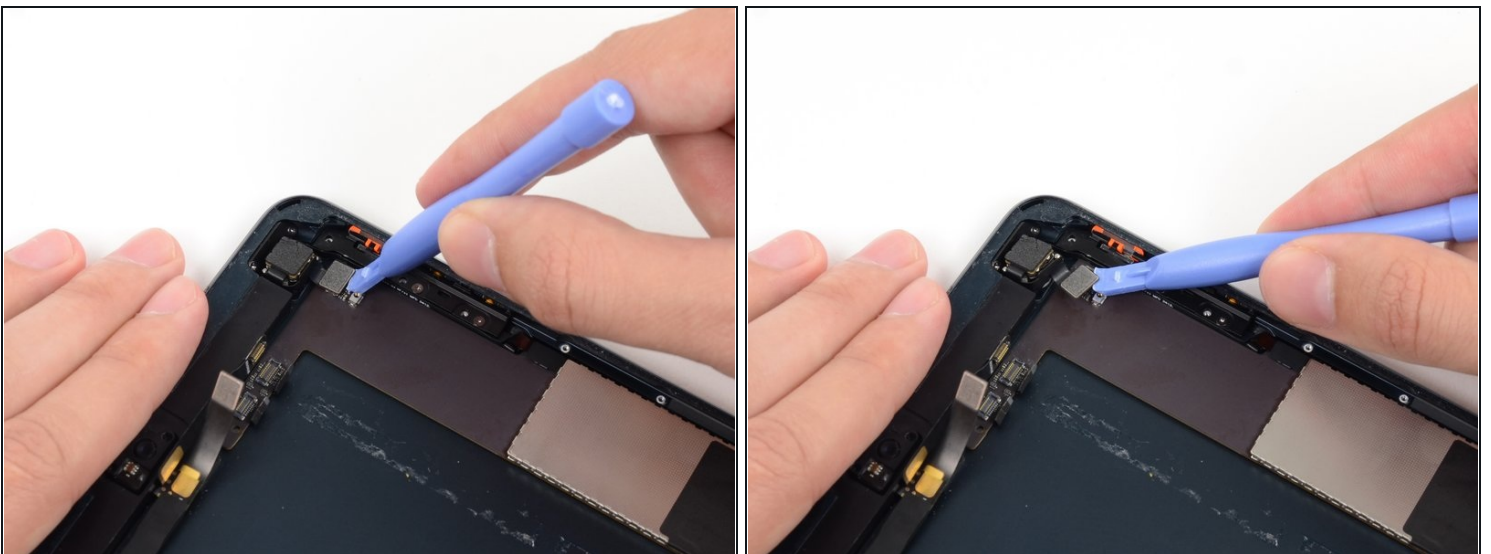
- Pry the second (upper) metal plate up from the front-facing camera cable connector.
- Again, carefully pry the plate up and away from the headphone jack cable connector.

Step 82



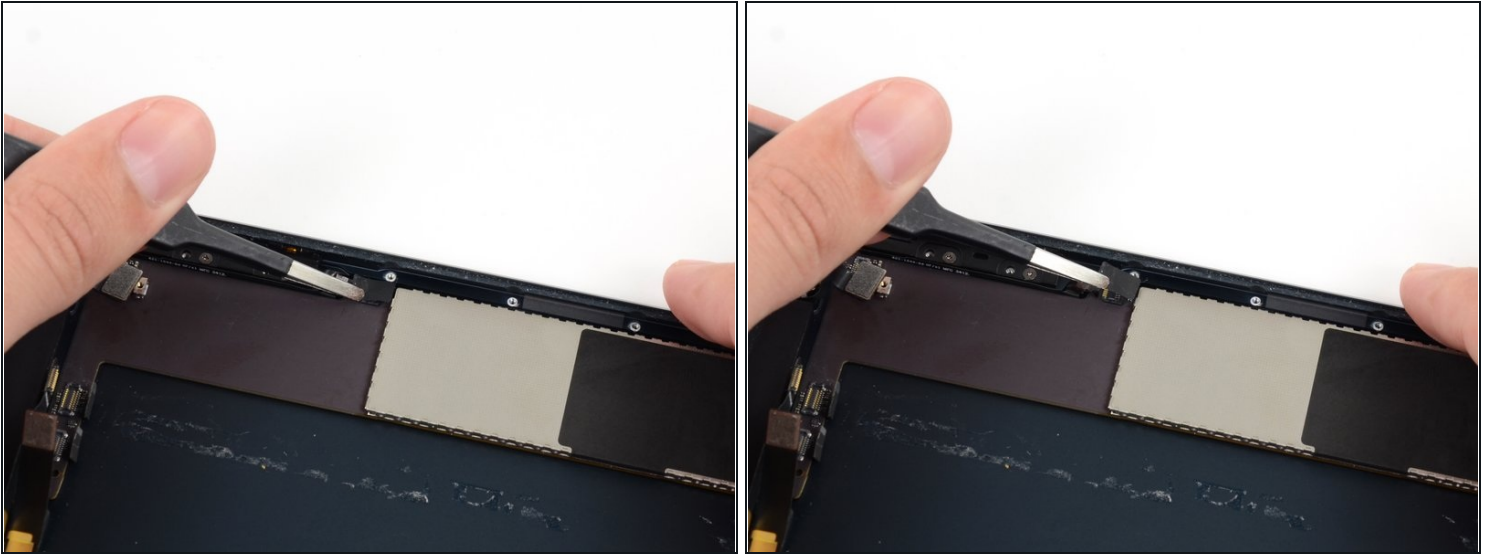
- Use a plastic opening tool to pry the headphone jack cable's connector up out of its socket on the logic board.
- ① Gently bend the headphone jack cable back, away from the logic board.

Step 83



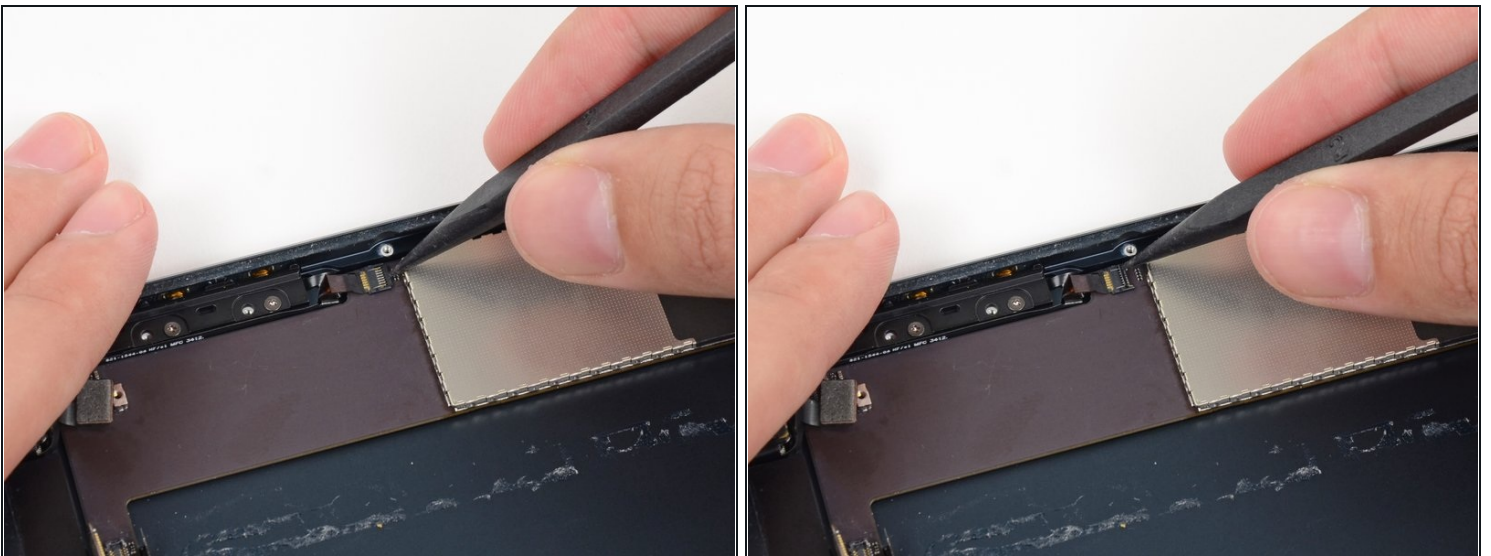
- Use a plastic opening tool to pry the rear-facing camera cable up from its socket on the logic board.

Step 84



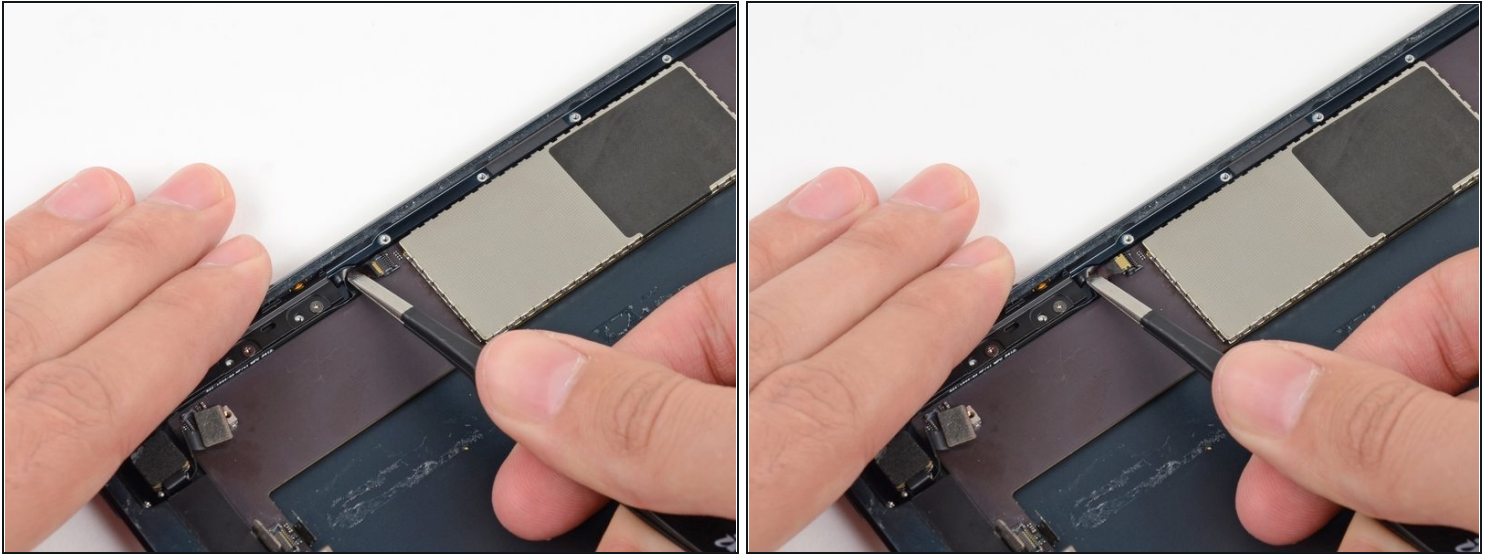
- Use tweezers to peel up and remove the small piece of tape covering the button ribbon cable ZIF connector.

Step 85



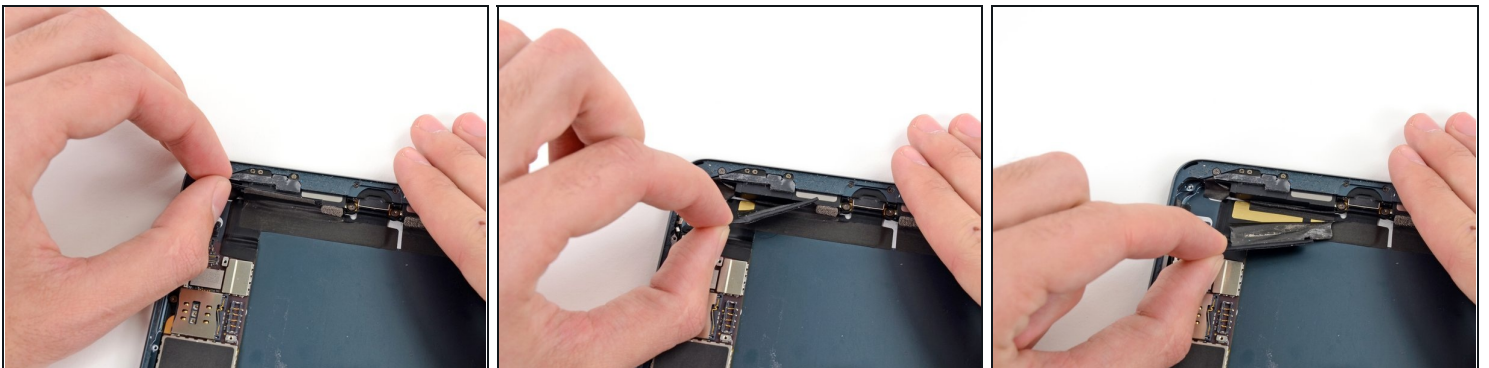
- Use the tip of a spudger to lift up the tab on the button ribbon cable ZIF connector.

Step 86



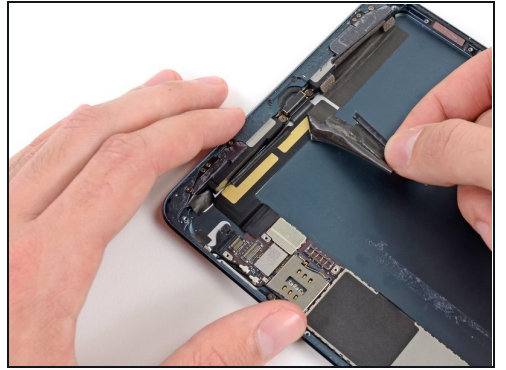
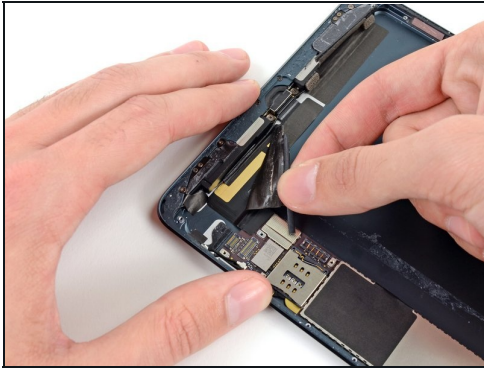
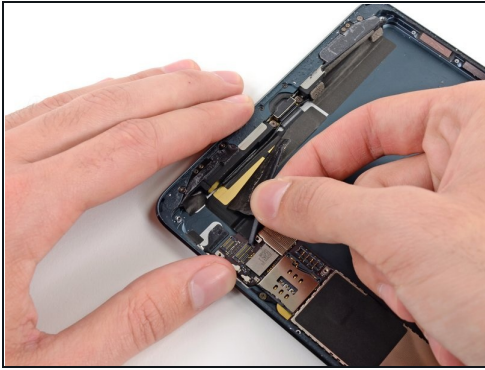
- Use tweezers to pull the button ribbon cable straight out of its ZIF socket on the logic board.

Step 87



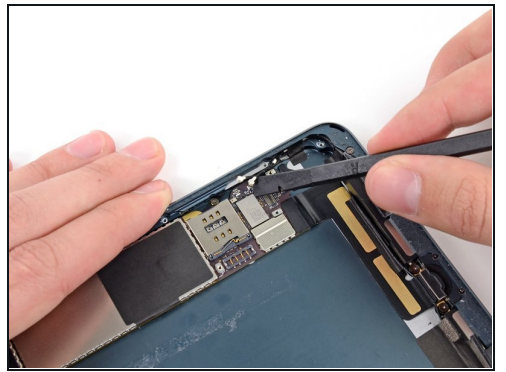
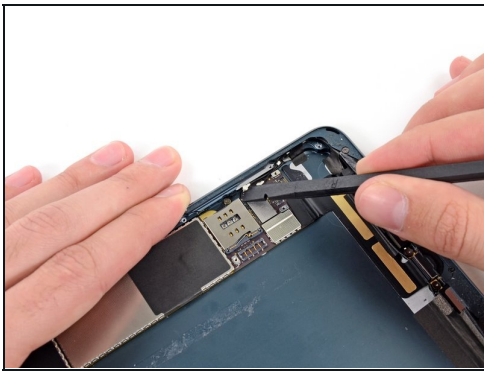
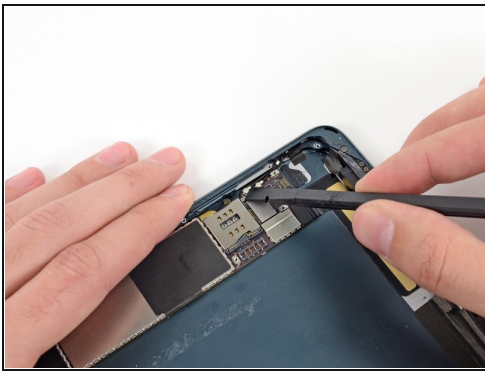
- Gently peel back the wide piece of tape covering the top of the right speaker.

Step 88



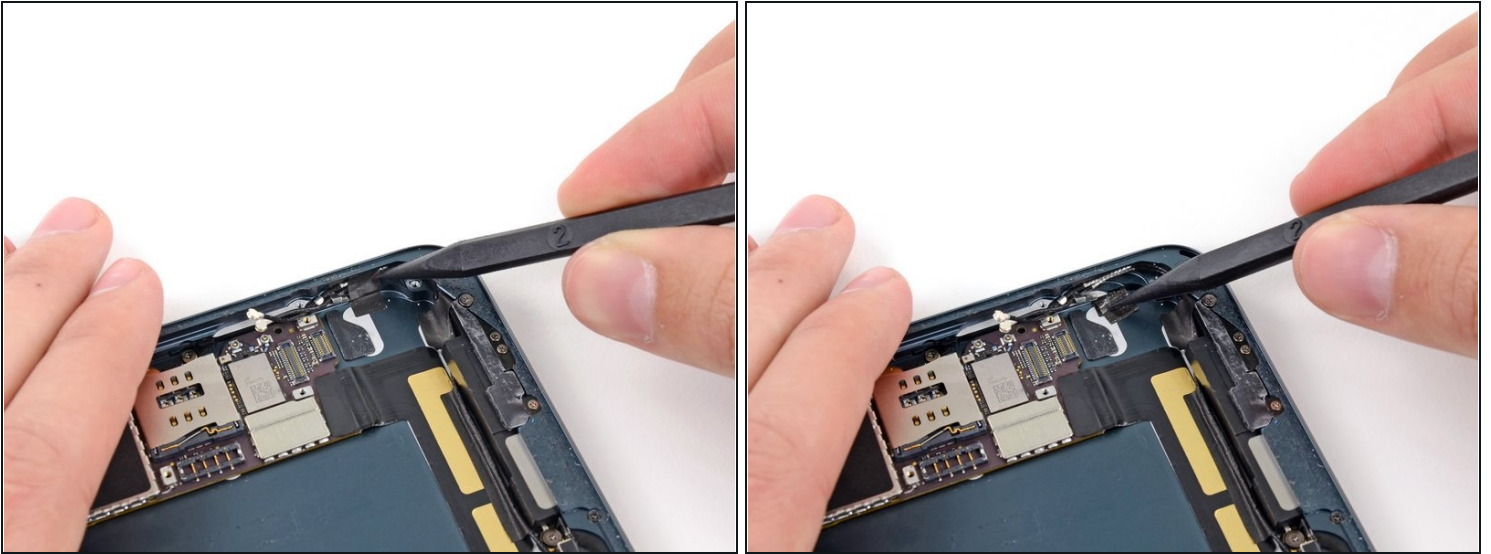
- Continue peeling the tape, and remove it from the iPad.

Step 89



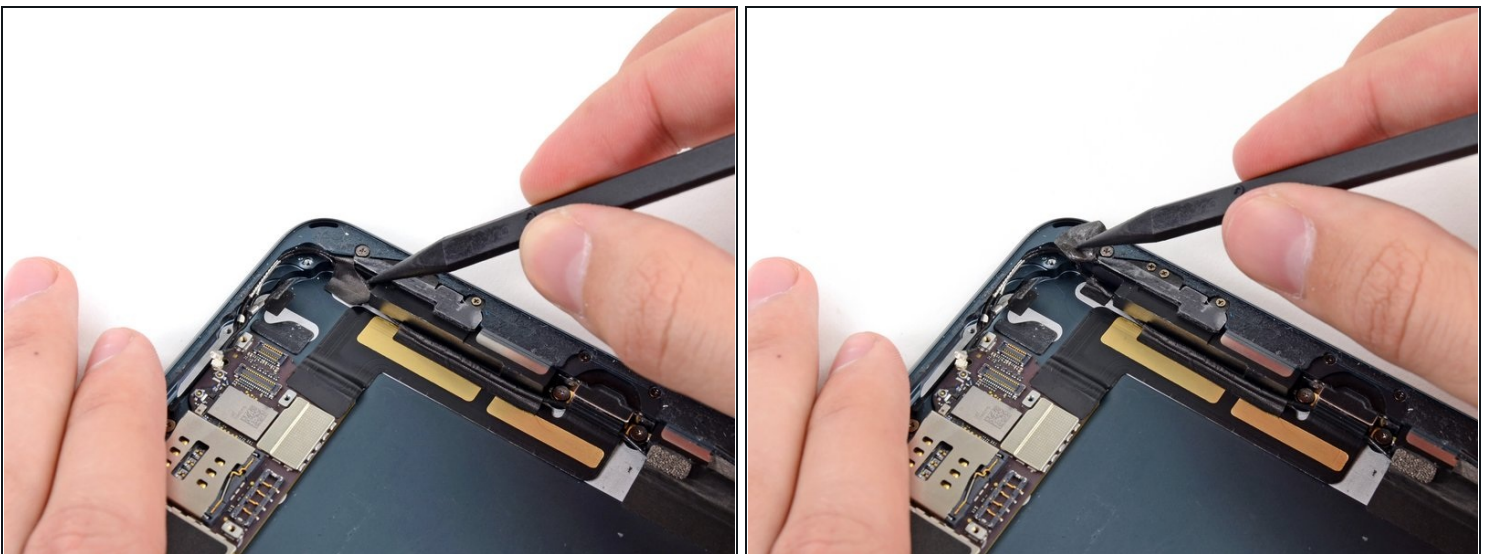
- Use the flat end of a spudger to disconnect the two bottom antenna cable connectors from their sockets on the logic board.

Step 90



- Use the tip of a spudger to peel back the small piece of tape covering both antenna cables on the bottom right side of the iPad.
- ☑ Leave the lower part of the tape stuck to the back of the rear case to aid in reassembly.

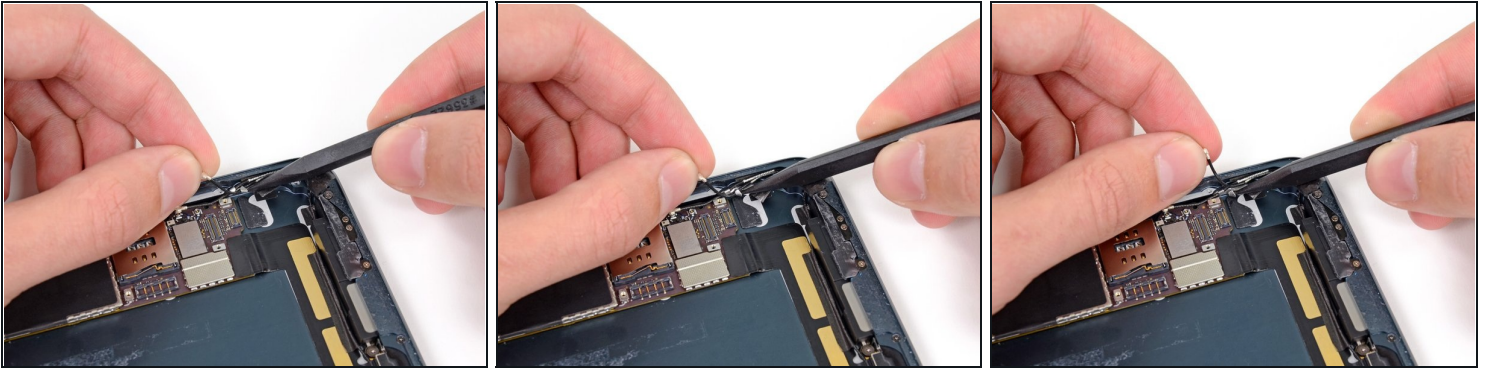
Step 91



- With the tip of a spudger, peel up the larger piece of tape covering both antenna cables near the bottom of the rear case.

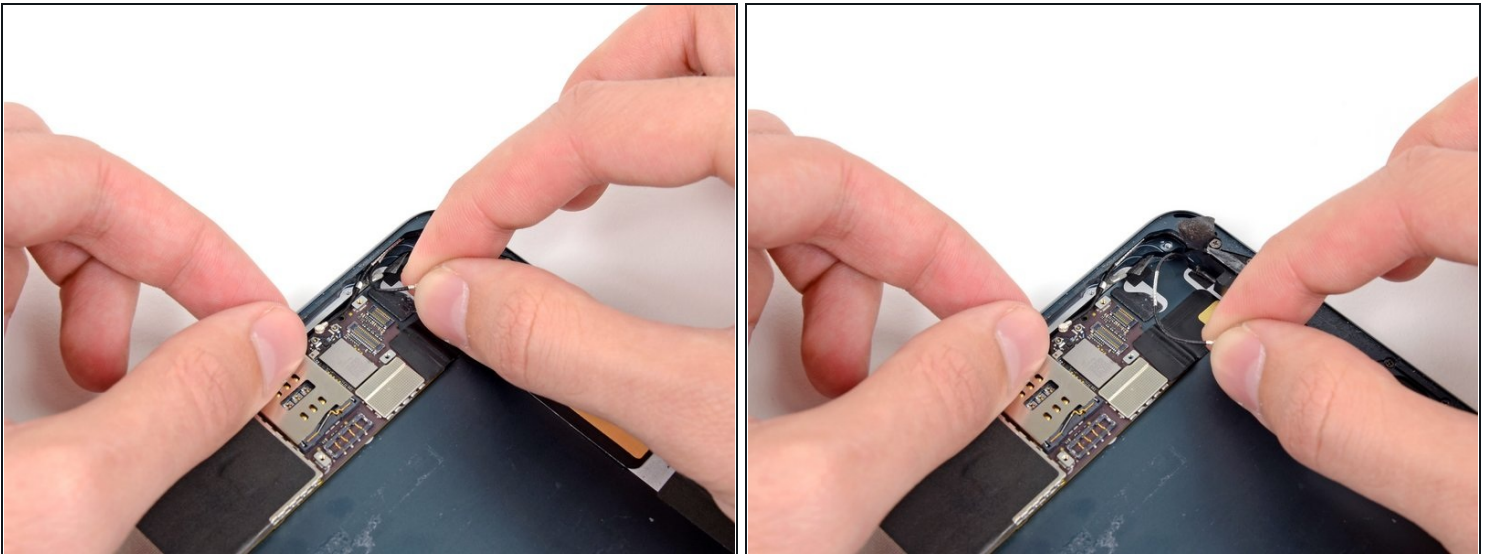
⚠ Do not try to remove this piece of tape; it is wrapped around the top antenna cable.

Step 92



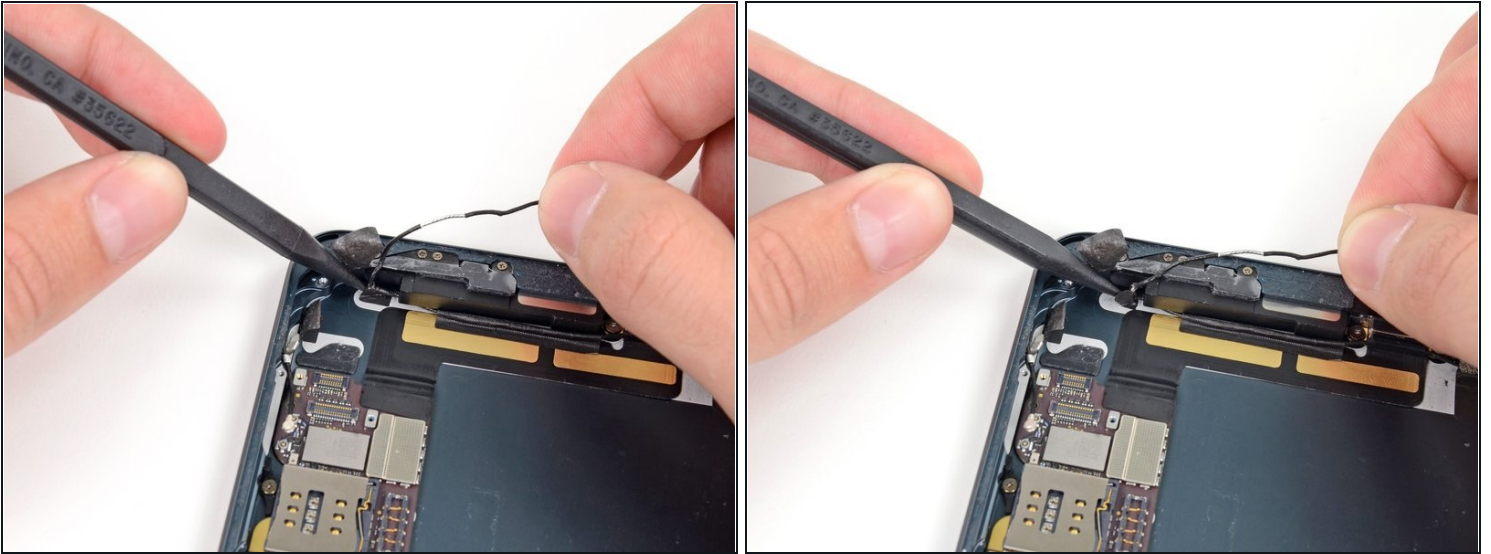
- Use the tip of a spudger to pry the small metal retaining clip off the left antenna cable, then de-route the cable from the clip.

Step 93



- De-route the antenna cable from the corner of the iPad.

Step 94



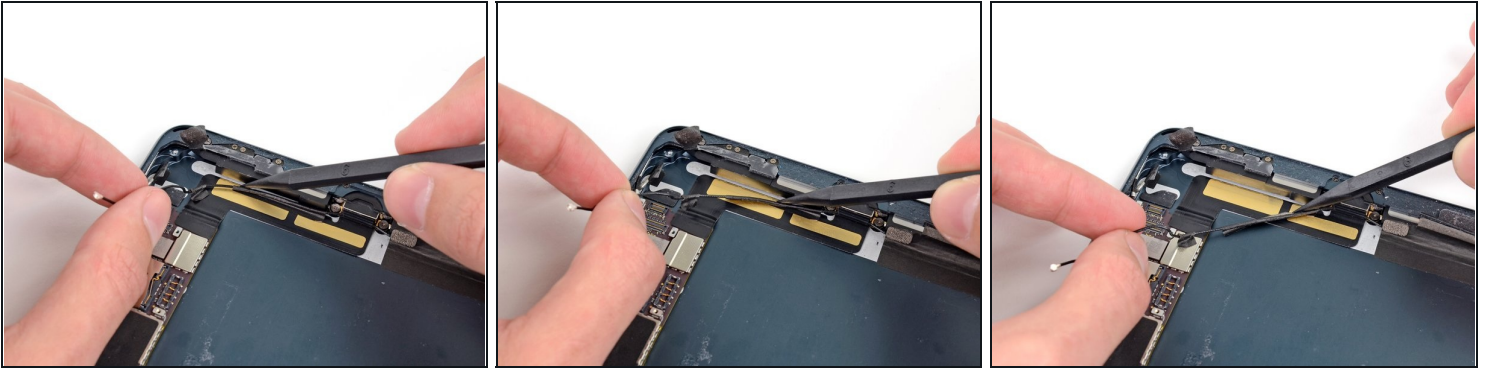
- Use the tip of a spudger to remove the small piece of tape securing the antenna cable in the bottom right corner of the iPad.

Step 95



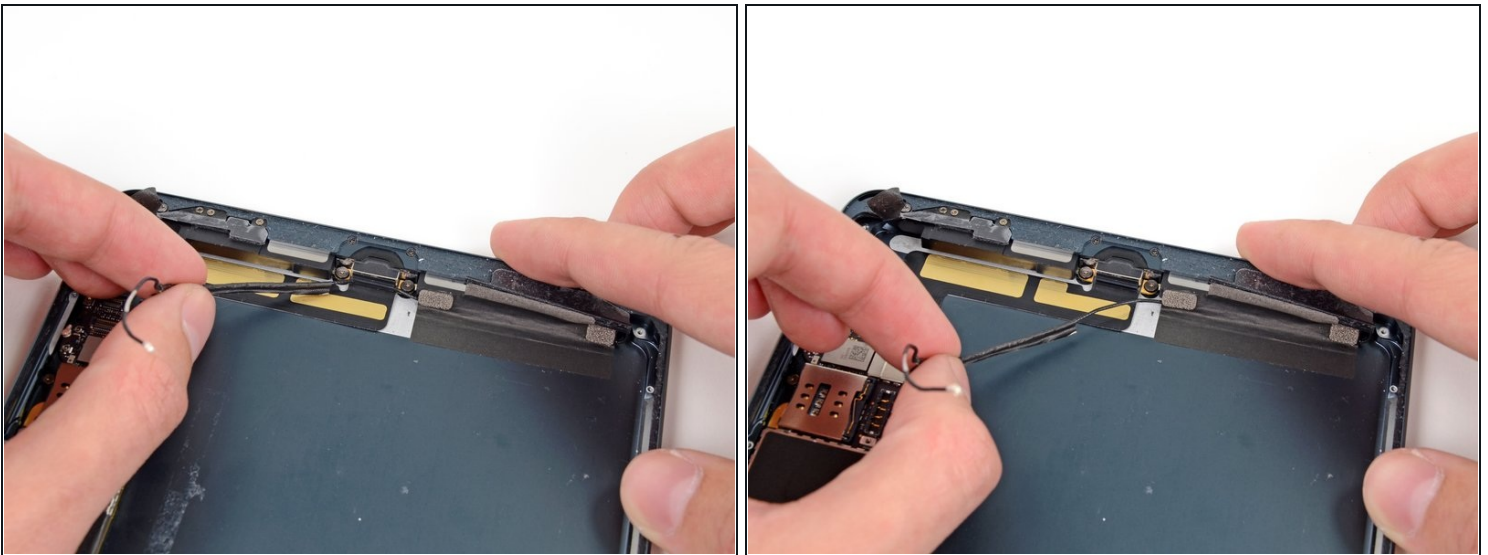
- Peel the cable back from the corner of the iPad.

Step 96



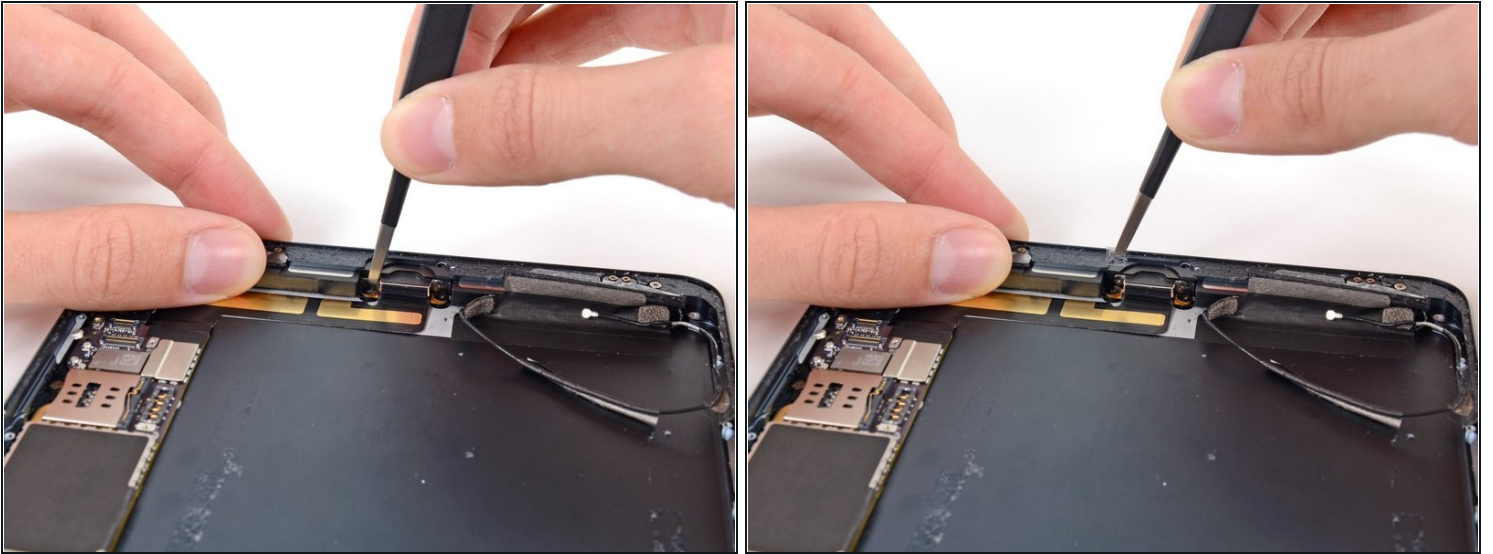
- Use the tip of a spudger to pry the antenna cable tape up from the rear case of the iPad.
- Gently pull the antenna cable out of the way as you work along the piece of tape, to keep it from resealing.

Step 97



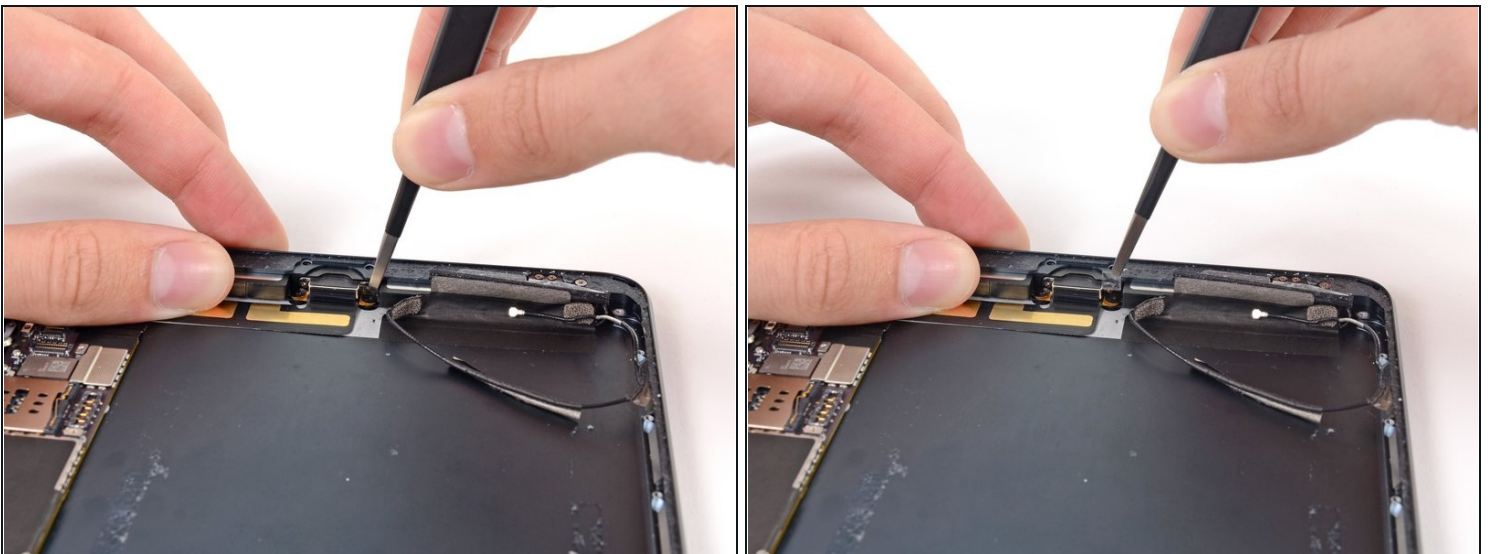
- Pull the antenna cable from the slot behind the Lightning connector.

Step 98 — Plastic Covers



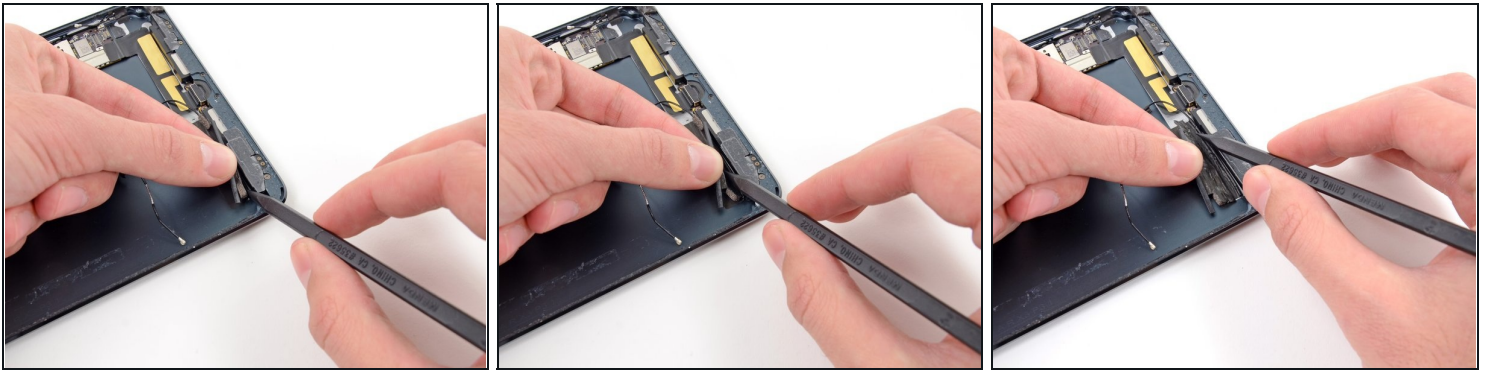
- Use tweezers to remove the small plastic cover on top of the horizontal screw on the right side of the Lightning connector housing.

Step 99



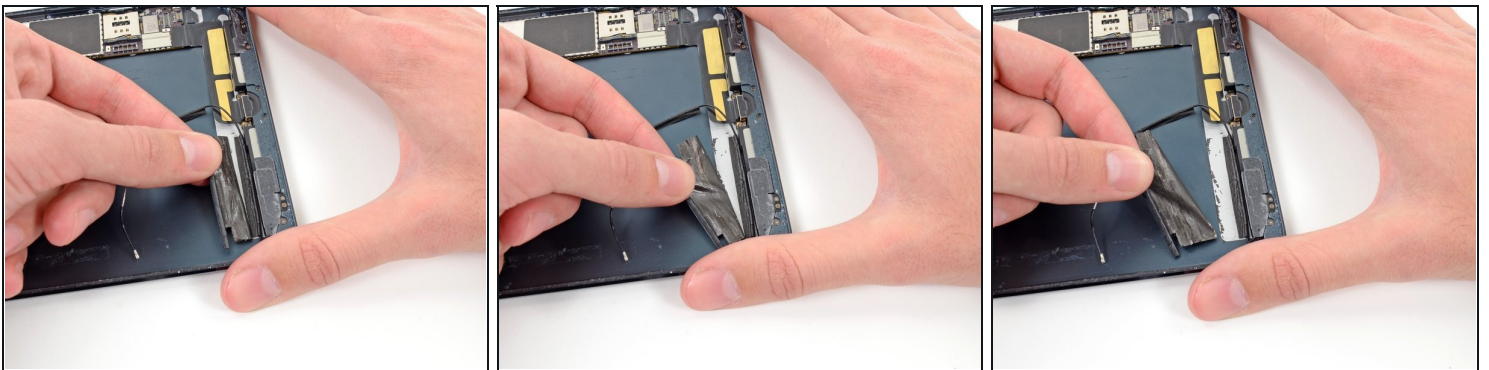
- Remove the plastic covering from the left side of the Lightning connector housing.

Step 100 — Wi-Fi/Bluetooth Antenna



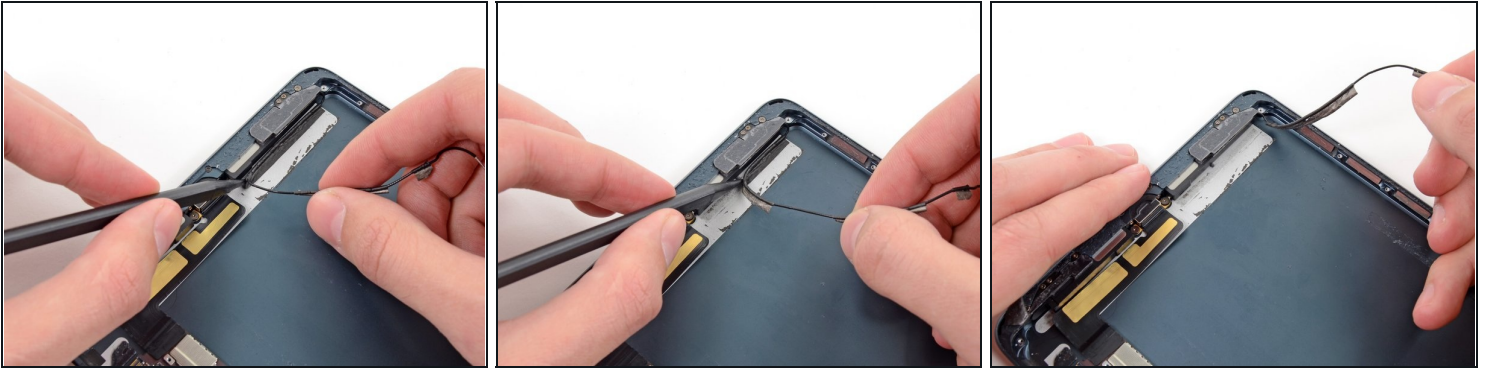
- Pull the wide tape toward the top of the iPad, applying constant force to release it from the antenna cable between it and the speaker.
- Slide the tip of a spudger through the gap between the wide tape and the antenna cable, breaking the adhesive connecting the two.
- Continue pulling the wide tape until it is no longer covering the antenna cable.

Step 101



- Peel back and remove the wide tape from the iPad.

Step 102



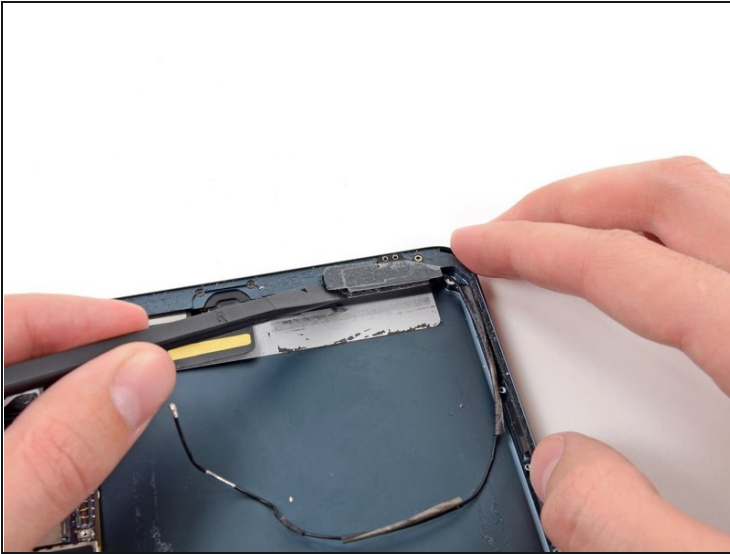
- Use the tip of a spudger to pry the antenna cable tape up from the rear case of the iPad.
- Gently pull the antenna cable out of the way as you work along the piece of tape, to keep it from resealing.

Step 103



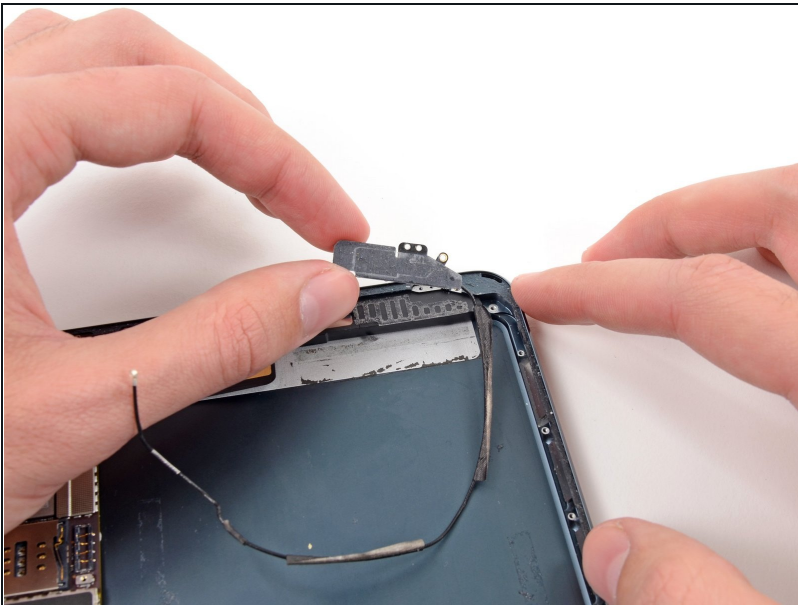
- Remove the following three screws securing the bottom left antenna to the rear case:
 - One 1.2 mm Phillips #00 screw.
 - One 1.1 mm Phillips #00 screw.
 - One 2.5 mm Phillips #00 screw.

Step 104



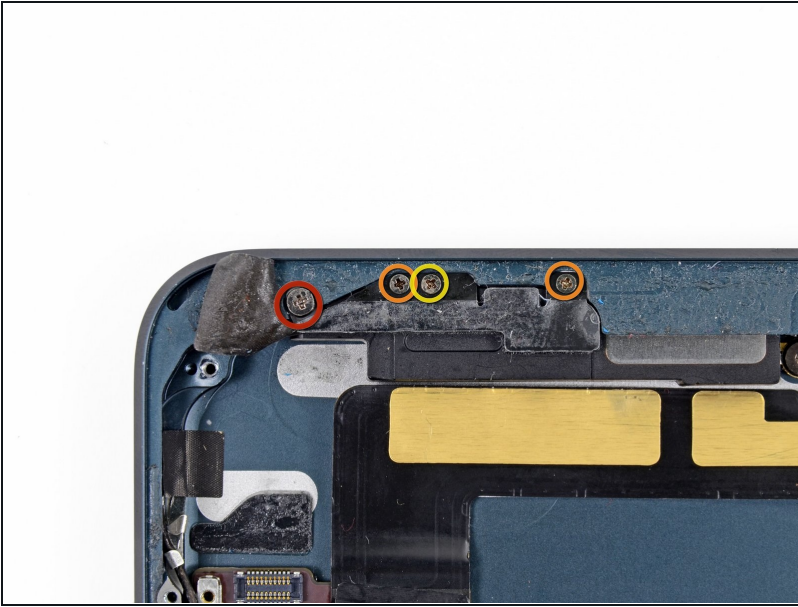
- Use the flat end of a spudger to loosen the foam adhesive securing the lower left antenna to the left speaker.

Step 105



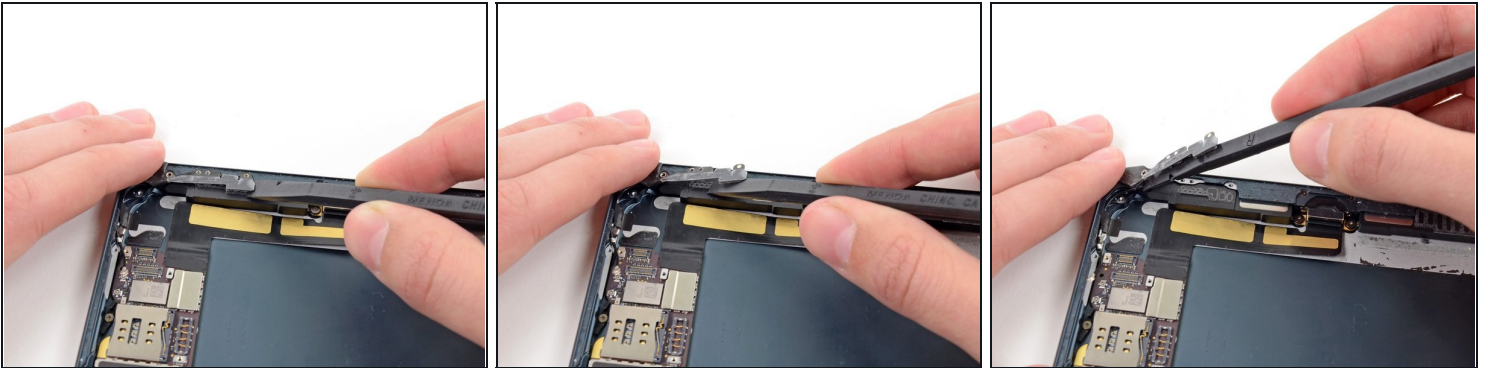
- Remove the antenna from the iPad.

Step 106 — GPS Antenna



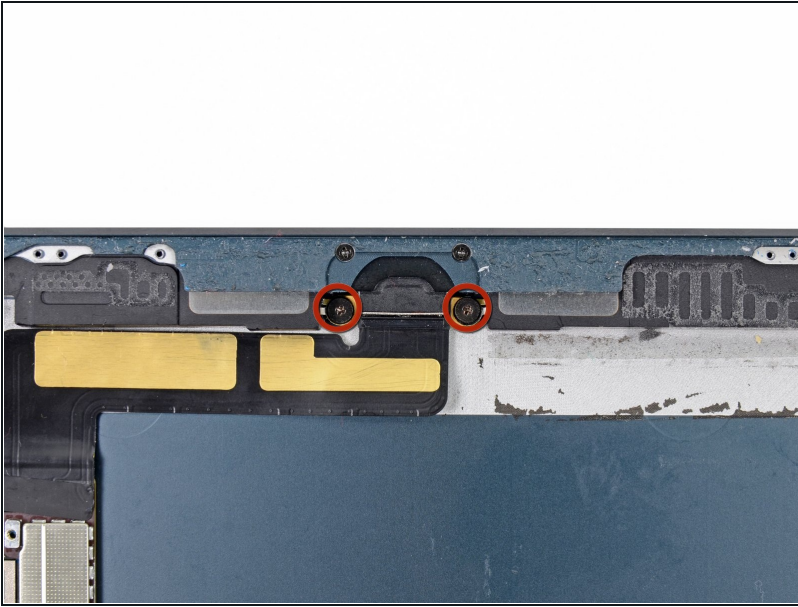
- Remove the following screws:
 - One 2.5 mm Phillips #00
 - Two 1.1 mm Phillips #00
 - One 1.2 mm Phillips #00

Step 107



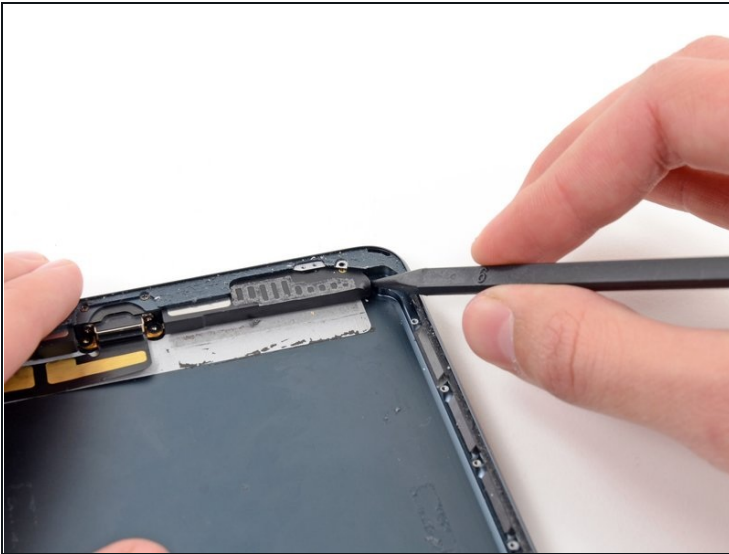
- Use the flat end of a spudger to loosen the foam adhesive holding the antenna to the right speaker.

Step 108 — Speakers



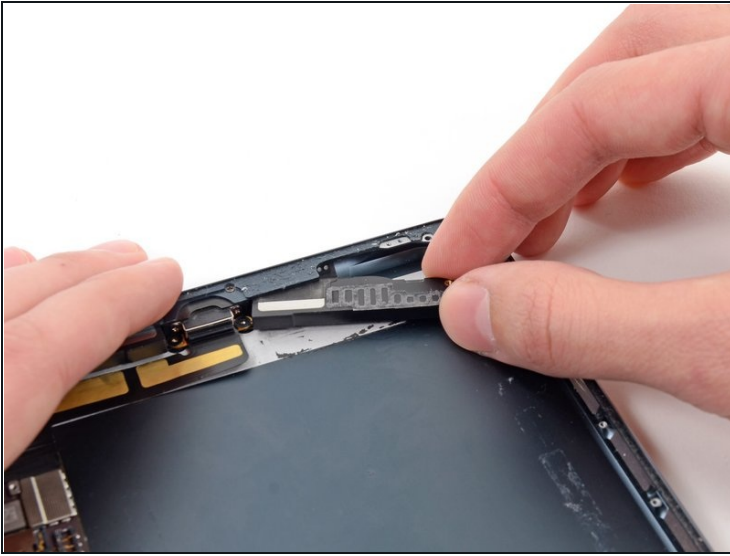
- Remove two 1.4 mm #00 Phillips screws securing the left and right speakers to the rear case.

Step 109



- Insert the tip of a spudger into the gap between the left speaker and the bottom left side of the rear case.
- Pry around the bottom of the speaker, sliding it out from its recess in the rear case.

Step 110



- Once enough of the speaker is exposed, grasp it and pull it away from its recess in the rear case.
- Remove the left speaker from the iPad.

Step 111



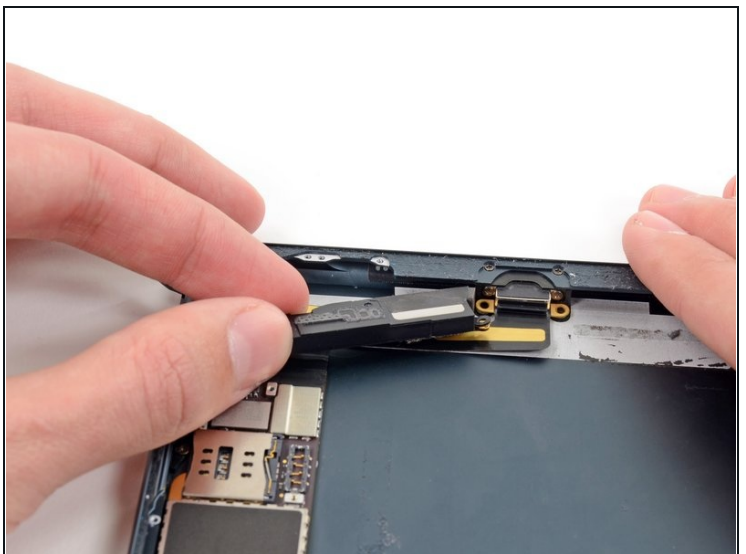
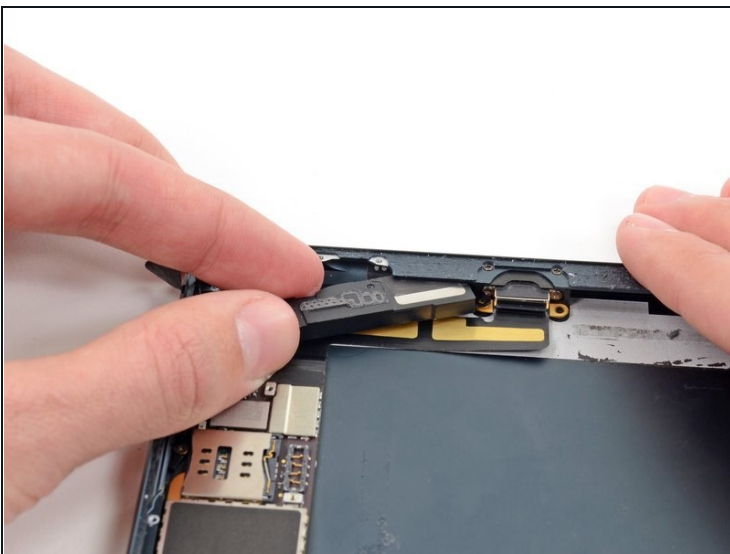
- Use the tip of a spudger to slide the right speaker slightly toward the outside of the iPad.

Step 112



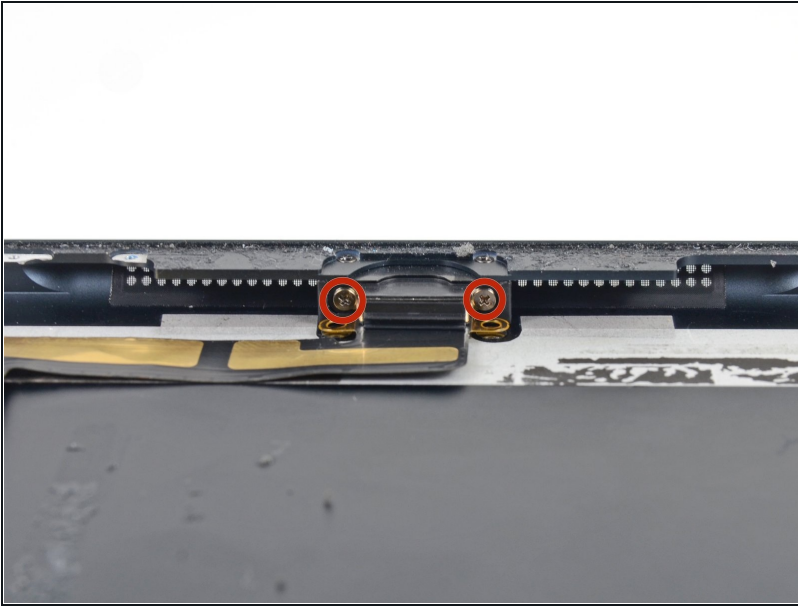
- Insert the tip of a spudger into the gap between the right speaker and the bottom right corner of the case.
- Pry the speaker out from its recess in the rear case.

Step 113



- Once enough of the speaker is exposed, grasp it and pull it away from its slot in the rear case.
- Remove the right speaker from the iPad.

Step 114



- Remove two 2.8 mm Phillips #00 screws from the base of the Lightning connector.

Step 115 — Logic Board



- Reheat the iOpener in the microwave for **one minute**.
⚠ Remember to be careful not to overheat the iOpener during the repair procedure. Wait at least two minutes before reheating the iOpener, and never microwave it for more than one minute.
- Place the heated iOpener on the left side of the back of the iPad. Let it sit there for 90 seconds to soften the logic board adhesive.

Step 116



- Slide the flat end of a spudger underneath the Lightning port cable, freeing it from the adhesive securing it to the rear case.

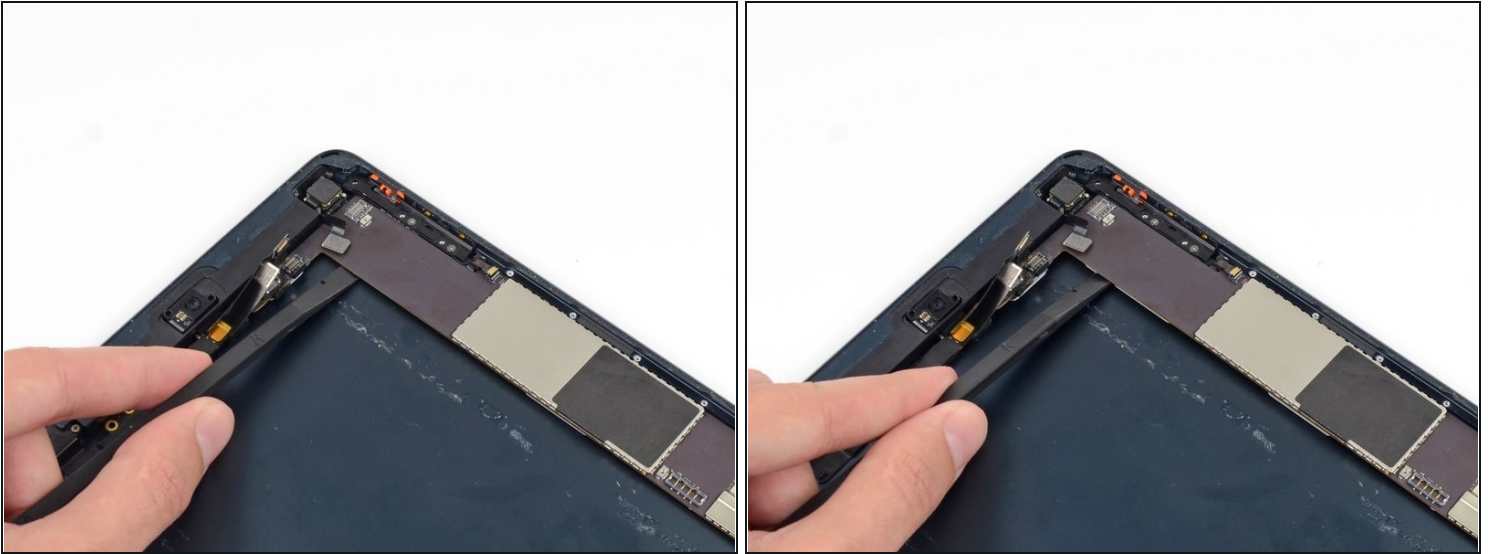
Step 117



- Continue to carefully slide the spudger under the Lightning port cable nearest the logic board.

⚠ Be sure to work slowly; jerking the spudger may tear the Lightning cable from the logic board.

Step 118



ⓘ In the following steps you will be prying under the logic board. Be careful to pry evenly to avoid bending or stressing the logic board. If it is hard to insert the spudger, reheat and reapply the iOpener.

- Gently insert the flat end of a spudger underneath the logic board nearest the front-facing camera. Slowly pry to free the corner from adhesive.

Step 119



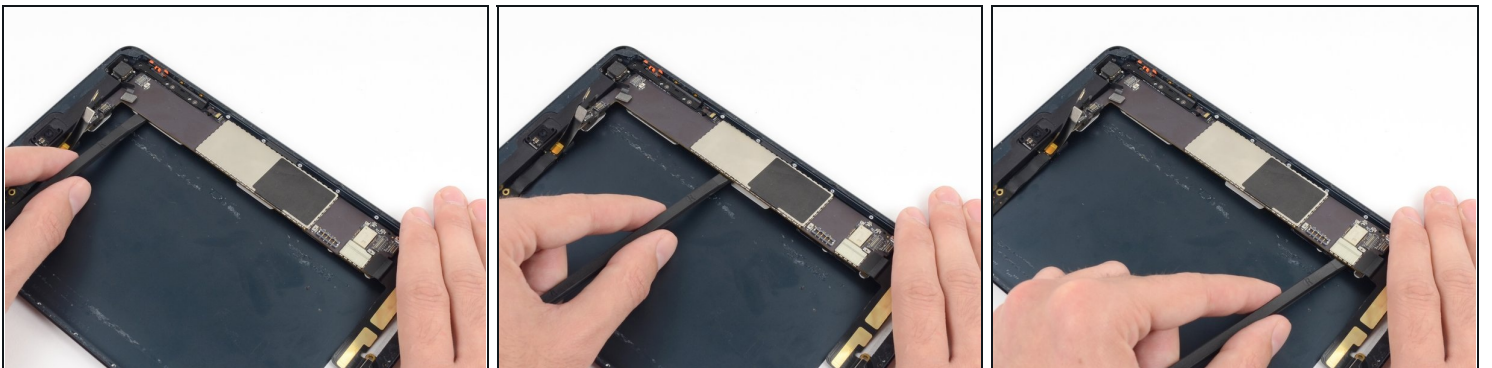
- Insert the flat end of a spudger underneath the center of the logic board. Slowly pry to free the section from adhesive.

Step 120



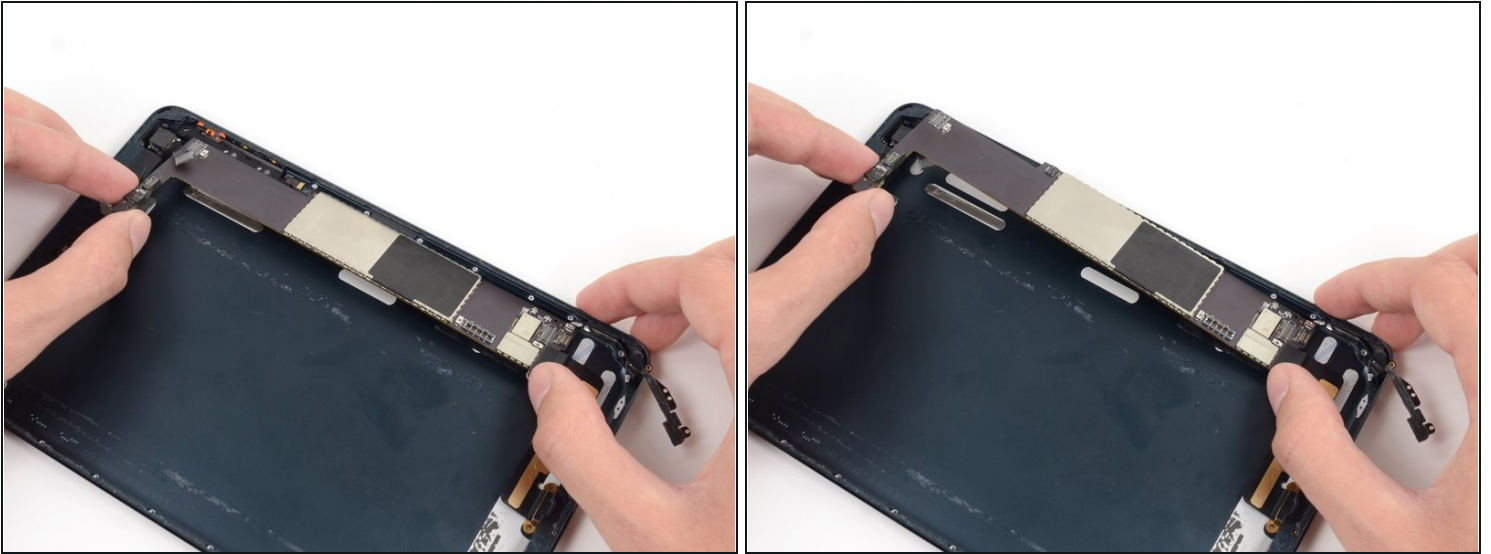
- Insert the spudger underneath the logic board nearest the Lightning port cable and pry to free the corner.

Step 121



- Insert the spudger further under the logic board and slide along its length to detach the last of the adhesive.

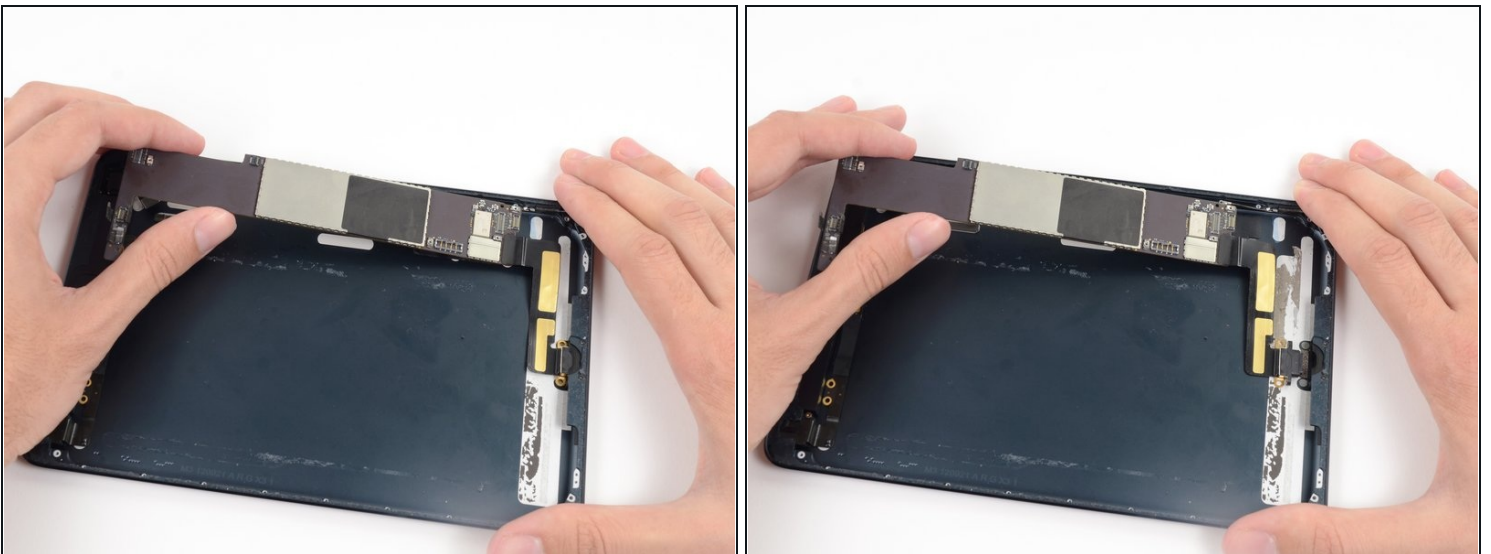
Step 122



- Lift the end of the logic board nearest the front-facing camera to ensure it is free of adhesive.

⚠ Again, be careful not to bend or stress the logic board—make certain that you have cleared all of the adhesive with the spudger.

Step 123



- Lift the logic board and Lightning cable assembly up and pull toward the top of the iPad to remove the Lightning connector from its housing.

To reassemble your device, follow these instructions in reverse order.