



# Sew-on Patch

Patch jeans with a sew-on patch.

Written By: Brittany McCrigler



---

## INTRODUCTION

Patch jeans with a sew-on patch. This technique is also applicable for adding patches to bags, bandanas, and boy-scout uniforms. Patches can also be sewn on by hand.

For replacement parts or further assistance, contact [Patagonia Customer Service](#).



### TOOLS:

- [Sewing Machine](#) (1)
  - [Utility Scissors](#) (1)
  - [Sewing Pins](#) (1)
-

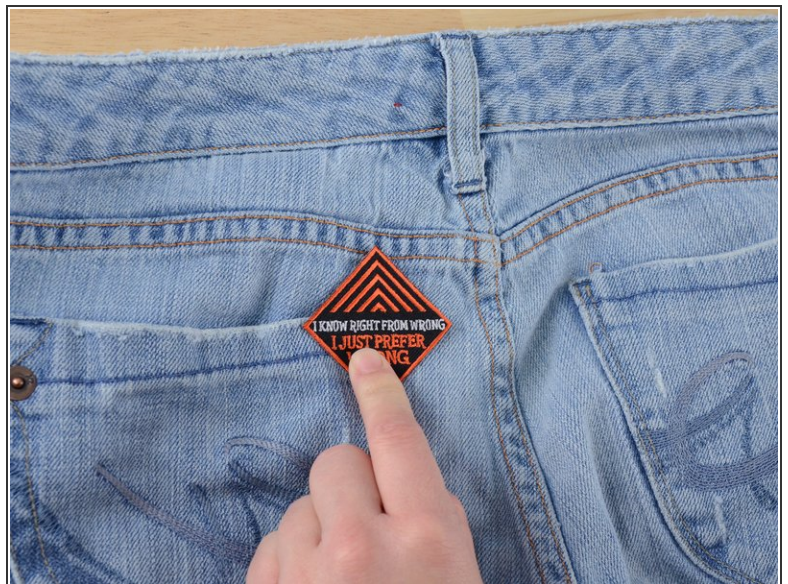


## Step 1 — Sew-on Patch



- Examine the damage. Clip any loose threads and remove any debris from the tear.
- Grab a trendy patch.

## Step 2



- Position the patch over the hole.
- Any patch you use should overlap the damage by at least 1/8".



## Step 3




- Pin the patch to the jeans.

 Be sure to only pin the patch to one layer of denim, or you will sew the pants shut.

## Step 4



- Slide the jeans into the sewing machine, positioning the needle over the edge of the patch.

 Be sure you only have one layer of the jeans between the needle and the sewing machine arm, or you will sew the pants shut.

## Step 5



- Lower the pressor foot.
  - Sew along the edge of the patch.
  - Remove the pins before you get to them.
- ⚠ Sewing over a pin can bend or break the needle.

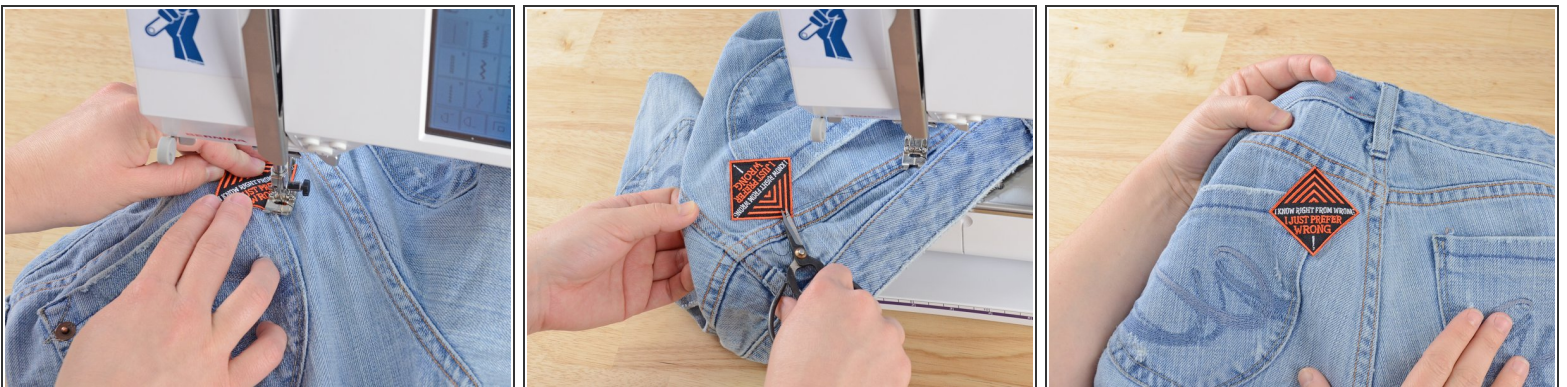


## Step 6



- Continue sewing around the patch, lifting the pressor foot to turn at corners of the patch.

## Step 7



- When you come all the way around, overlap the first two or three stitches.
- Lift the needle and pressor foot.
- Slide the jeans out of the sewing machine.
- Clip any threads, and admire your work.