



Samsung Sway Motherboard Replacement

This will help you replace the motherboard of...

Written By: Chris Rush



INTRODUCTION

This will help you replace the motherboard of the phone to fix a hardware problem.

TOOLS:

Phillips #00 Screwdriver (1)

iFixit Opening Tool (1)

Tweezers (1)

Step 1 — Motherboard



- Using your thumb(s) slide the cover up to remove
- Remove the battery by using your finger either in the upper left or right corner

Step 2



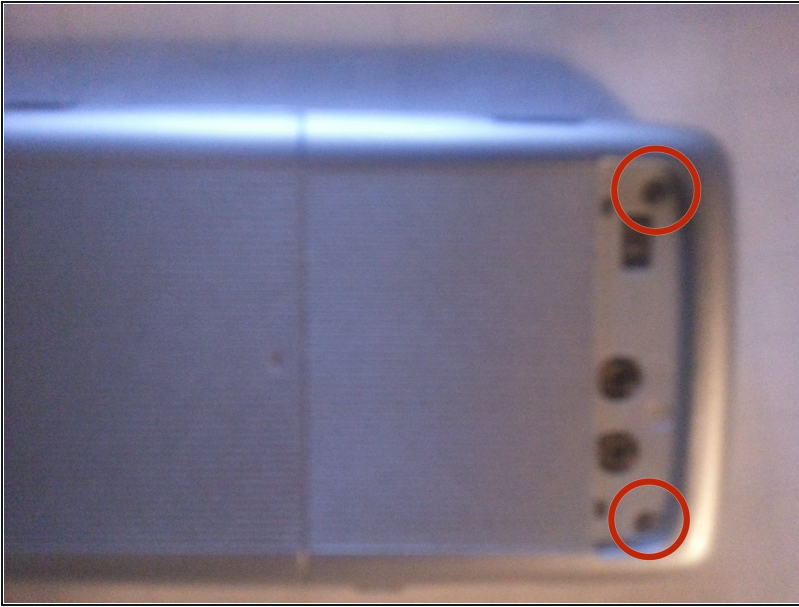
- Unscrew the four corner .4cm Phillips head screws.

Step 3



- Using a pair of [tweezers](#) gently insert them under the Samsung logo on the bottom of the phone.

Step 4



- Unscrew the two .4 cm Phillips head screws from under the Samsung logo

Step 5



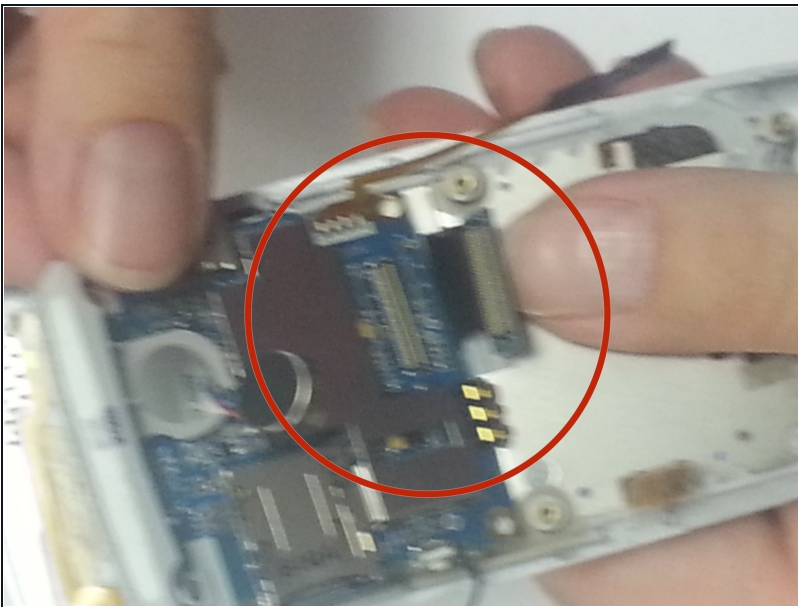
- Using the plastic opening tool gently insert it into the seam and work it around till the cover comes off. Being careful of the side buttons that pop off.

Step 6



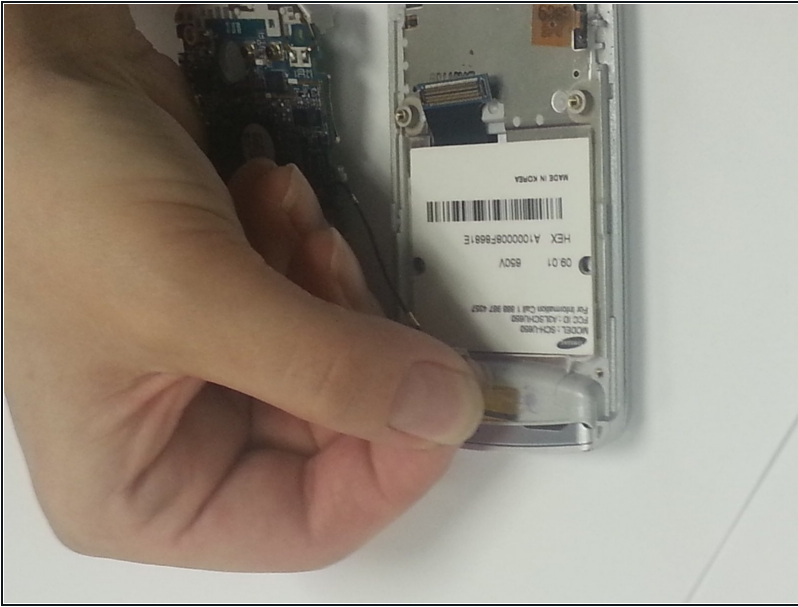
- Grasp the sides of the motherboard and gently rock back and forth . This is due to the sticky tape that is on the battery

Step 7



- Disconnect the black serial cable from the mother board.

Step 8



- Gently pull of the antenna sticker tape.

To reassemble your device, follow these instructions in reverse order.