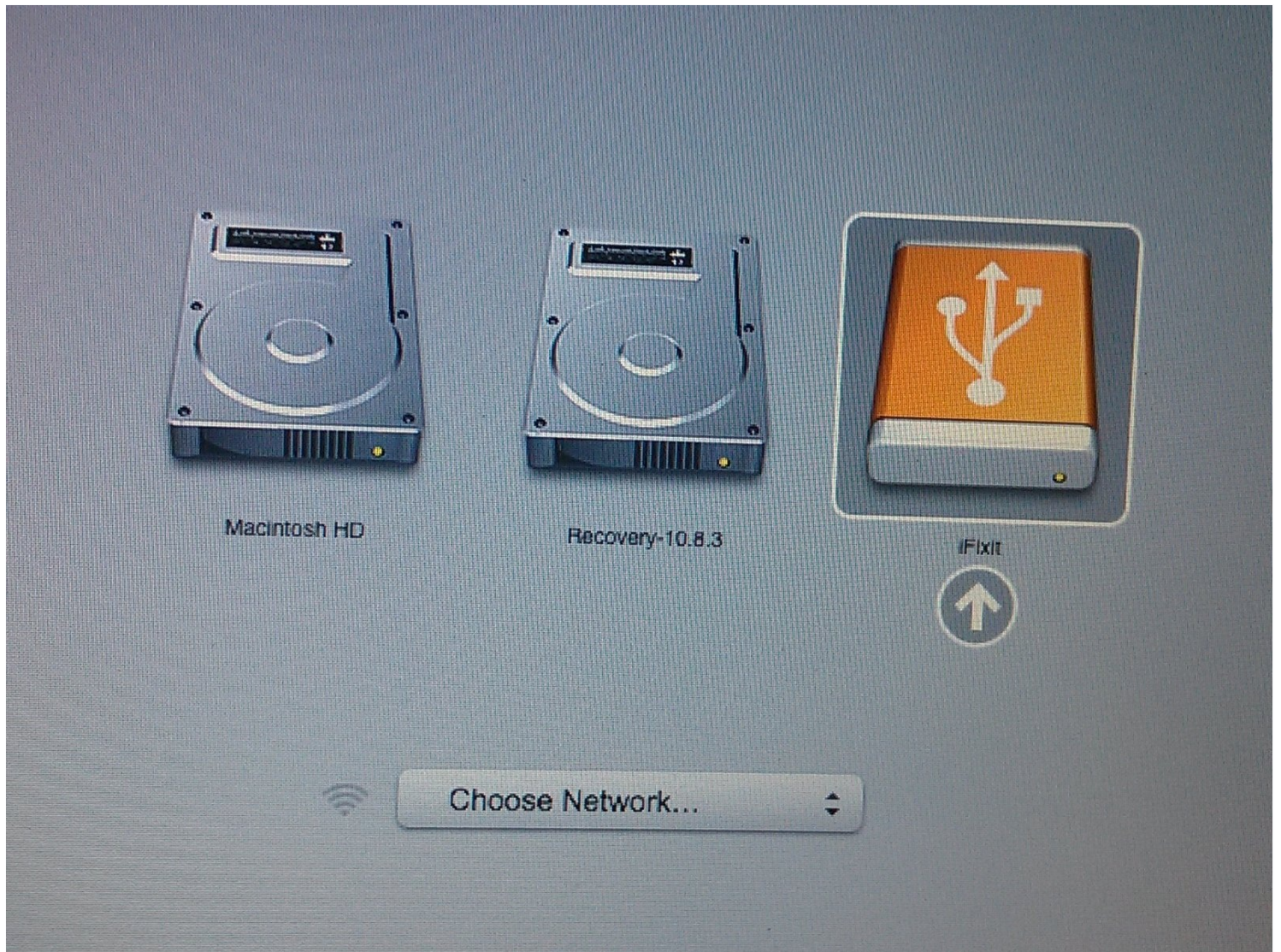




How to Clone an Existing Drive

This guide will go through the process of...

Written By: Mike



INTRODUCTION

This guide will go through the process of cloning your existing software, OS, and data to a new hard drive.

(SuperDuper is now compatible with Big Sur & Monterey.)

NOTE: With the introduction of macOS Catalina, certain steps in this guide are out of date.

IMPORTANT: *Cloning the hard drive is not recommended if you have a Mac that uses a recovery partition (MacOS 10.7 - present) or internet recovery (2011 - present). Instead, to move your data to a new drive, first [create a backup of your existing drive](#). Then, either use [internet recovery](#) or [create a bootable external drive](#) so you'll be ready to install macOS onto your new drive and migrate your data afterward.*

If you are happy with your existing operating system installation and would simply like to upgrade your hard drive capacity, you can clone your existing hard drive to your new drive.

To clone a hard drive, you will need a way to connect the second hard drive to your Mac. Our [2.5" Hard Drive Enclosure](#) or one of our [Hard Drive Upgrade Kits](#) works great for cloning your drive over.

To clone your hard drive, we recommend a program called [SuperDuper!](#), by Shirt Pocket Software.

The following instructions assume that you'll be using SuperDuper! and the 2.5" hard drive enclosure to clone onto a new 2.5" drive. If you are using a different setup, your installation process may be somewhat different.

PARTS:

[2.5" Hard Drive Enclosure with USB 3.0 Cable](#) (1)

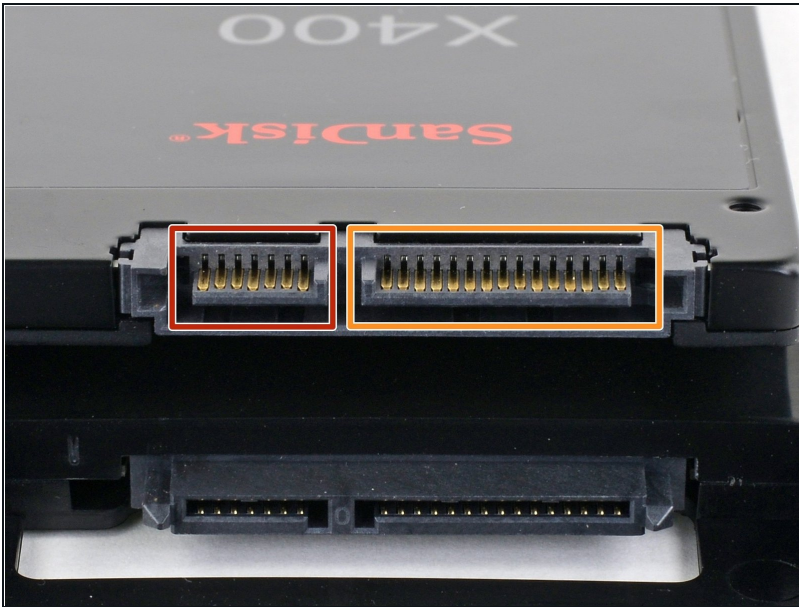
[250 GB SSD](#) (1)

[500 GB SSD](#) (1)

[500 GB SSD Hybrid 2.5" Hard Drive](#) (1)

[2.5" SATA Hard Drive](#) (1)

Step 1 — Install the drive into the enclosure



ⓘ Before you begin, look at your hard drive's ports and make sure that it has the right connectors:

- Narrow data port
- Wide power port

Step 2 — Open the enclosure



- Use the included screwdriver to remove the two Phillips screws.

Step 3



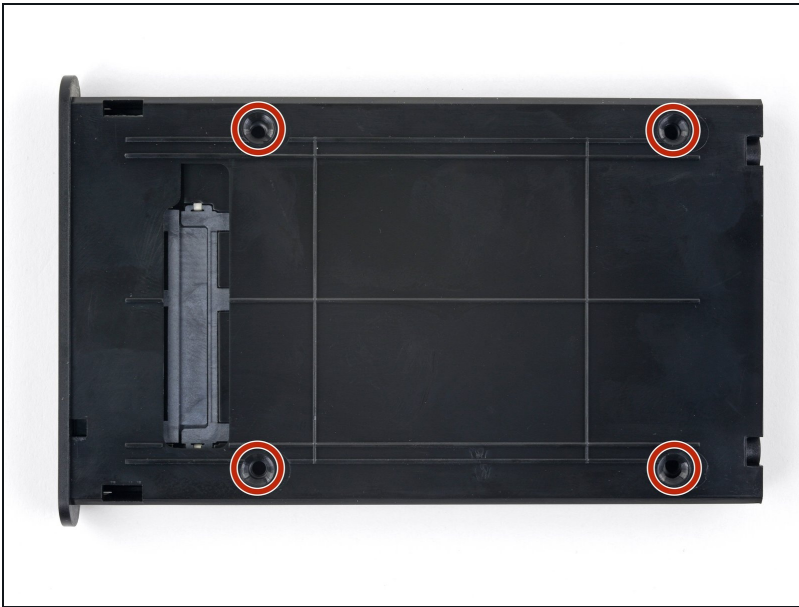
- Slide the plastic tray out of the aluminum housing.

Step 4 — Install the SSD



- Set the drive in the plastic tray and align the drive ports with the tray socket.
 - ① To prevent strain on the enclosure socket, lay the drive as flat against the tray as possible.
- Carefully push the drive into the tray socket to seat the ports.
- Press the drive's raised edge down into the plastic tray.
 - ① If the drive edge catches on the foam block, the drive is not fully seated against the tray socket. Continue pressing the drive into the socket until it clears the foam block.

Step 5



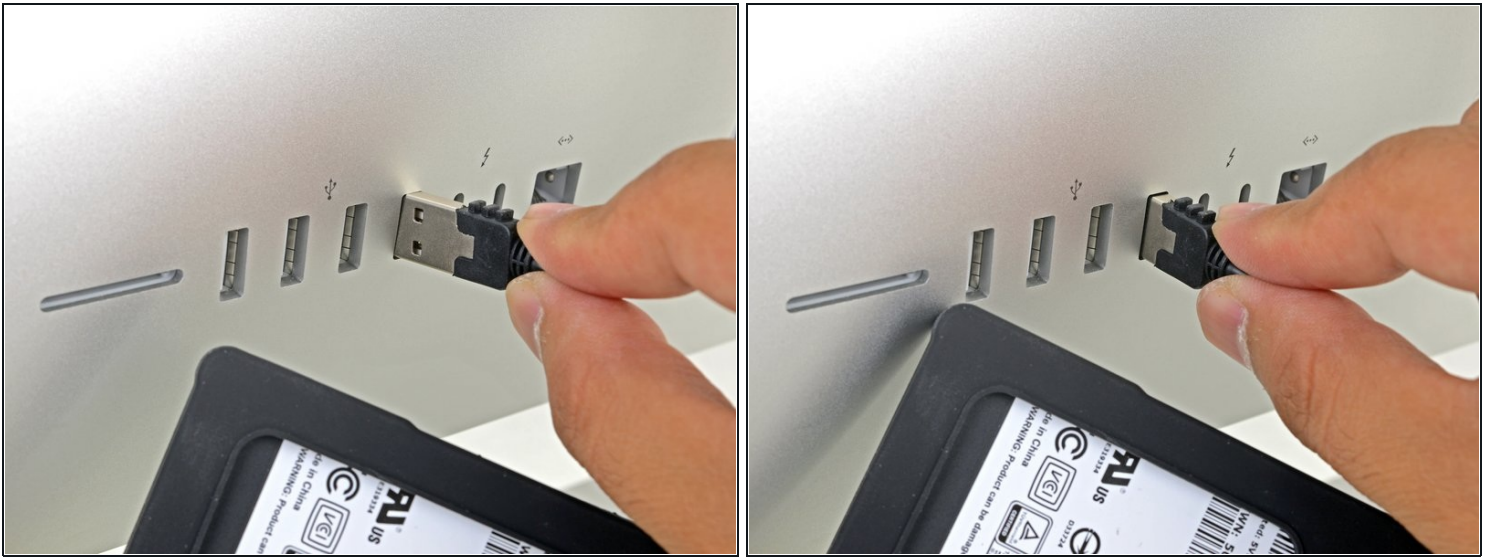
- Flip the drive tray over.
- Use the a Phillips screwdriver to install the four mounting screws (included in the kit) to secure the drive to the tray.

Step 6



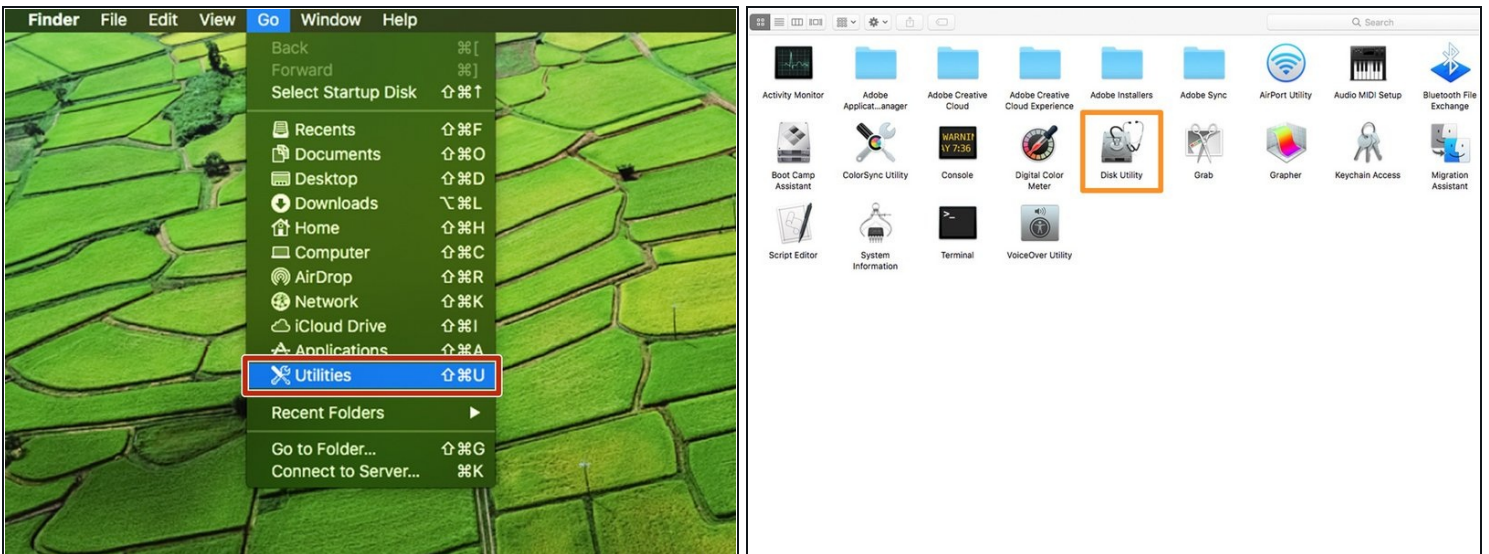
- Slide the tray back into the aluminum housing.
- Reinstall the two Phillips screws to secure the tray.

Step 7 — How to Clone an Existing Drive



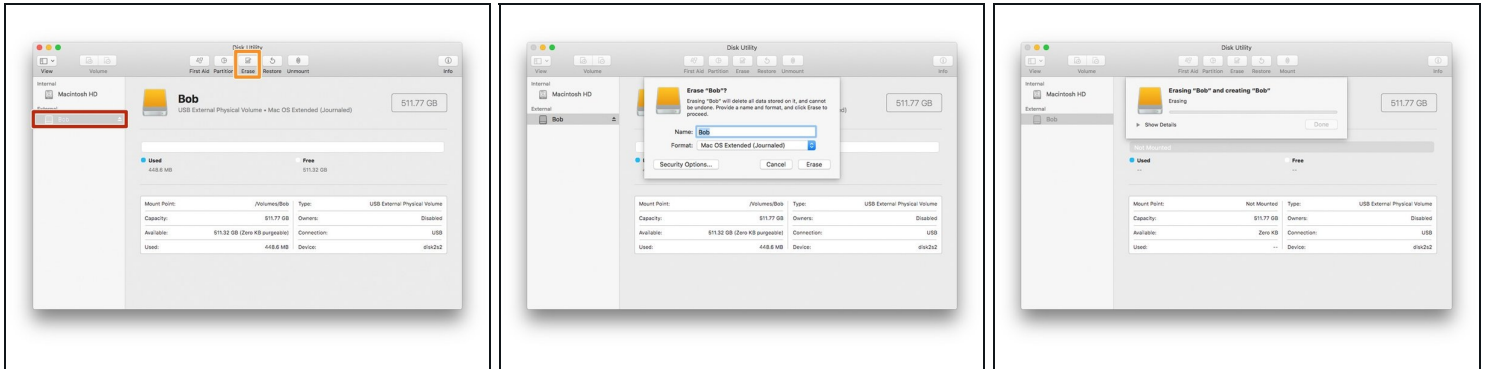
- Power on your Mac and wait for it to fully load.
- Plug the enclosure into your Mac's USB port.

Step 8



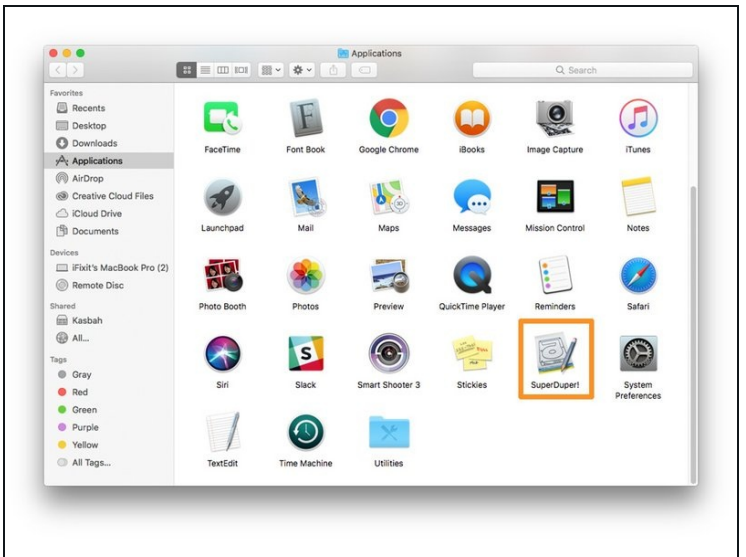
- Under the **Go** pulldown menu, select **Utilities**.
- Open **Disk Utility** from the **Utilities** window.

Step 9



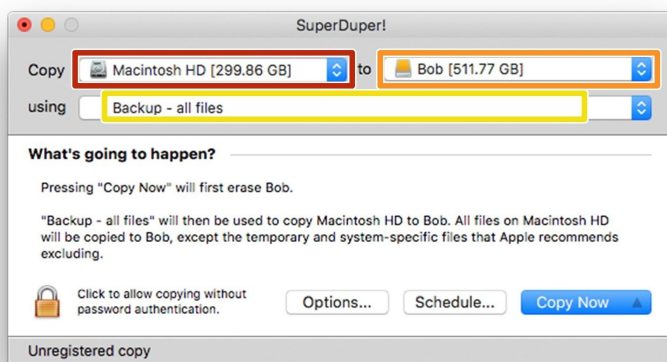
- Select your new hard drive from the left column in Disk Utility.
 - ❗ If the new drive is not showing up, disconnect the enclosure and check if the hard drive is properly connected to the enclosure.
 - Select the **Erase** option near the top row of buttons.
 - Select a name for your new drive, and select **"APFS"** for the format.
- ⚠ **Warning:** Pressing the erase button will erase the entire contents of the drive. Make sure you have selected the new hard drive!
- Press the **erase** button.
 - ❗ This process may take up to 10 minutes, so be patient.
 - Quit Disk Utility once the erase is complete.

Step 10



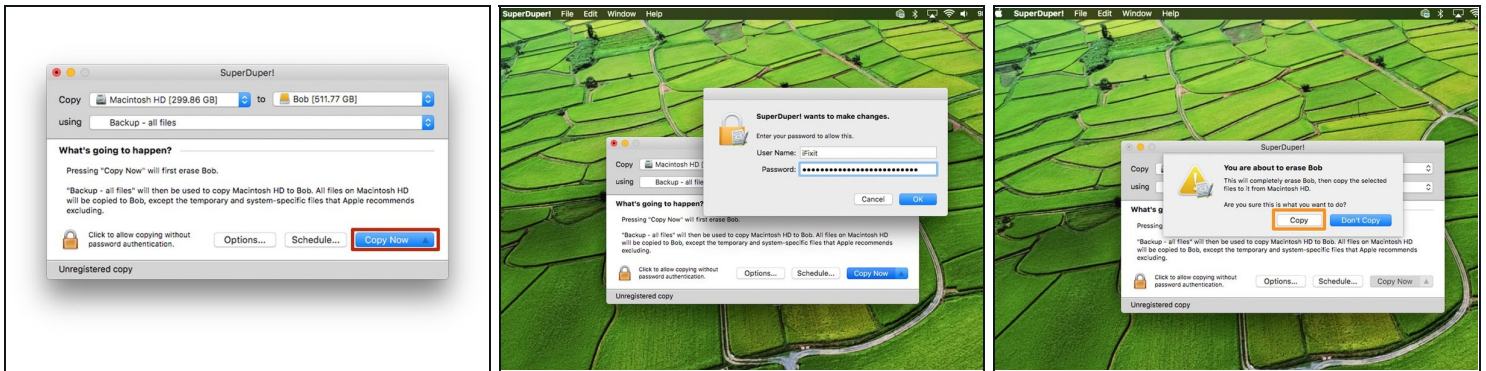
- Download and install [SuperDuper!](#)
- Under the **Go** pulldown menu, select **Applications**.
- Open **SuperDuper!**

Step 11



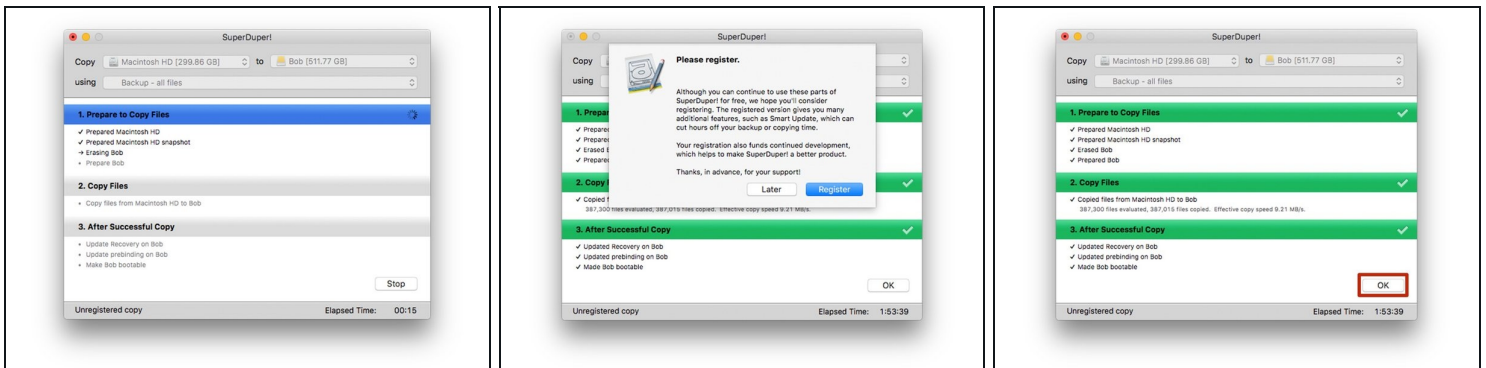
- In the copy pulldown menu, select your current drive.
- In the destination pulldown menu, select the new drive.
- In the method pulldown menu, select **"Backup—all files"**.

Step 12



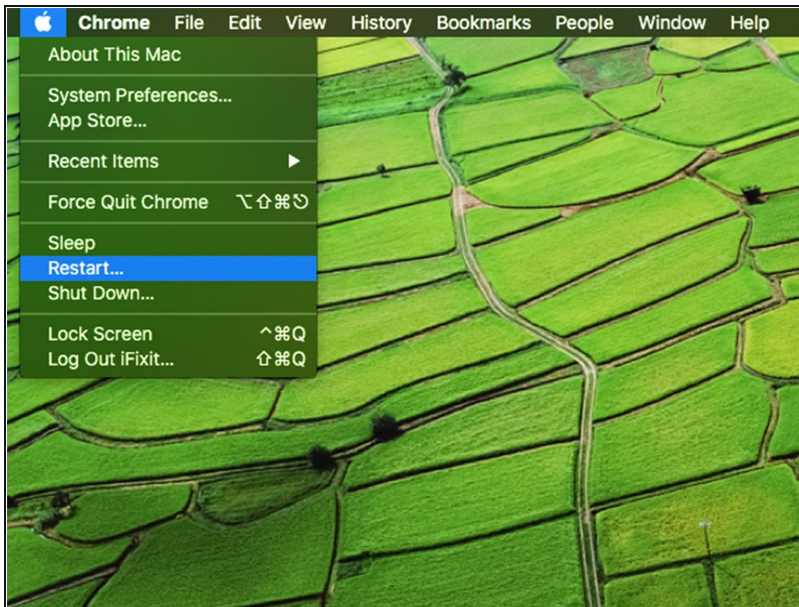
- Press the **"Copy Now"** button.
- If prompted, provide your password.
- Click **"Copy"** when warned about erasing the drive.

Step 13



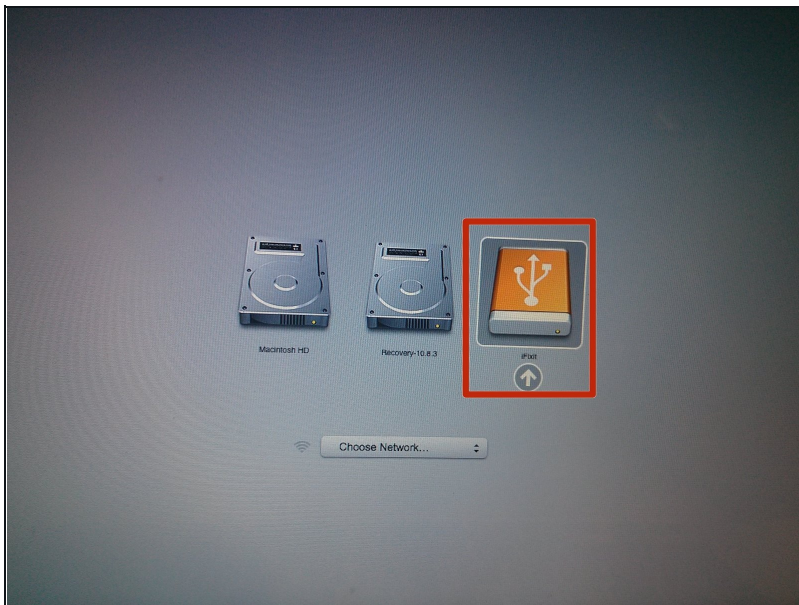
- Wait for the drive to copy (this could take several hours if you have a lot on your hard drive).
- When prompted for registration by SuperDuper!, either choose **"Register"** to purchase the software or **"Later"** to register later.
- After the copy is complete, click **"Ok"** and quit SuperDuper!

Step 14



- At this point, your new hard drive should be a clone of your existing drive and ready to install.
- However, we recommend testing the cloned drive before physically swapping the drives. This can be done by attempting to boot from the new cloned drive through the USB enclosure.
- Keep the enclosure connected to the computer and restart the computer. Hold down the **"option"** key as it reboots until a boot option menu shows up.

Step 15



- Select your new hard drive from the boot option menu.
- Wait for the computer to boot up to verify if it works properly.
- Your new hard drive is now ready to be installed in your computer.

Remove your new hard drive from the external enclosure and install it in your computer. Installation instructions are available for a variety of [Macs](#).

