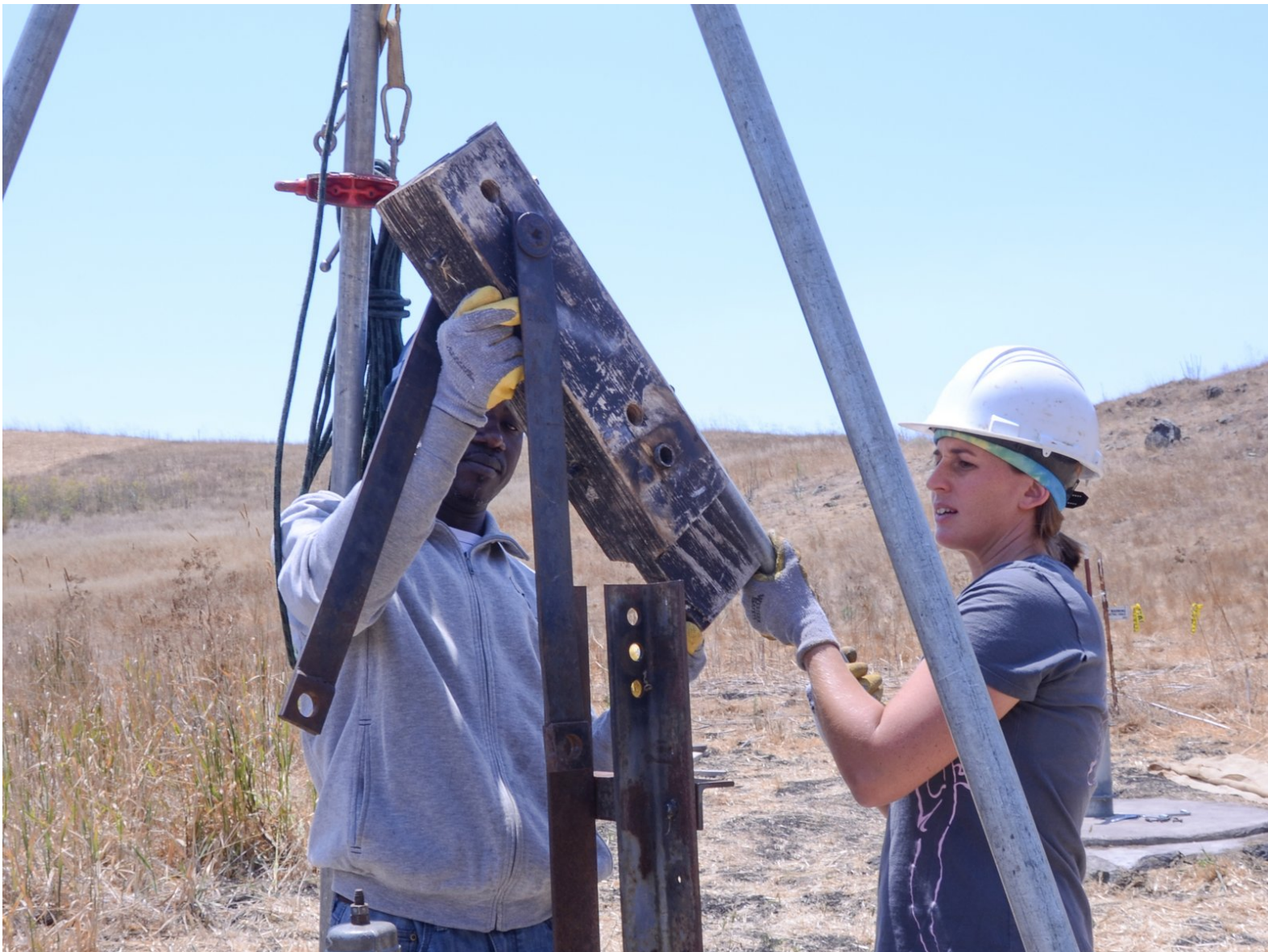




# Bush Pump Head and Handle Replacement

Use this guy to install a replacement pump head and/or handle.

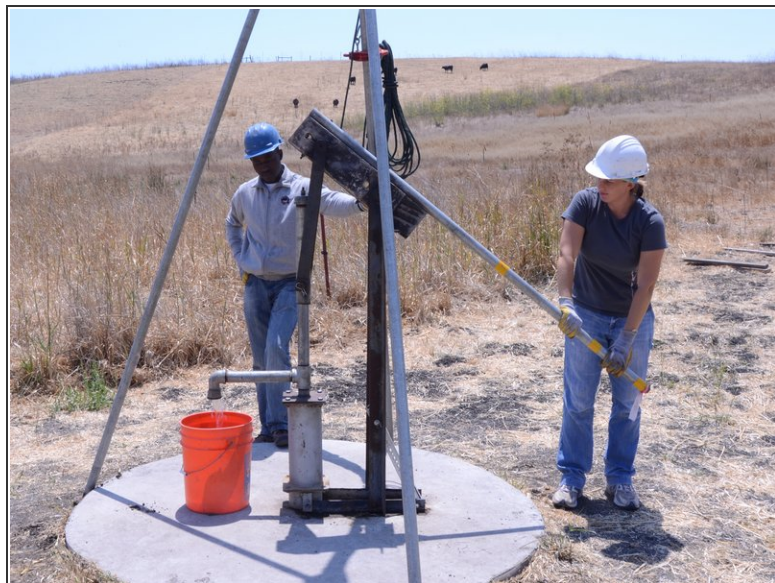
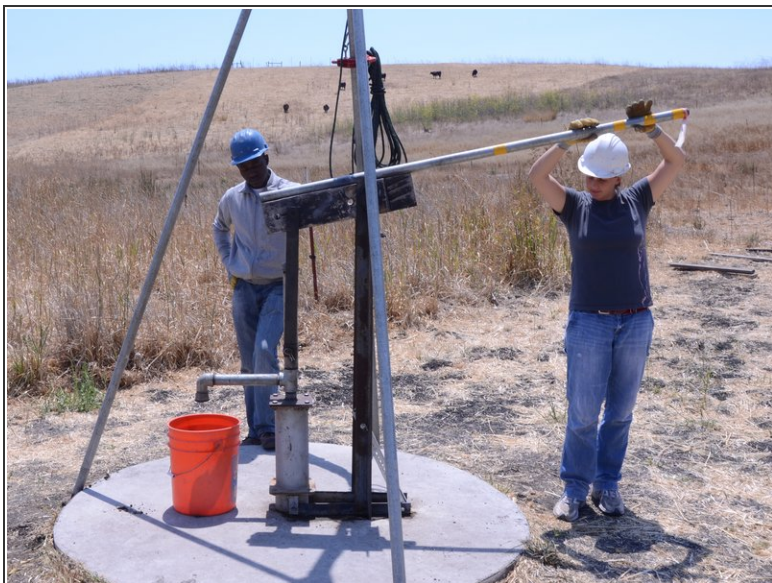
Written By: Jake Devincenzi



## INTRODUCTION

Follow this guide to remove a bush pump's head and handle for repair or replacement. Be sure to use at least two people when following this guide to prevent injury, as the pump head can be heavy.

## Step 1 — Head and Handle



- Test pump performance by pumping 40 strokes.
- ☑ An effective pump should return at least 10 liters.

## Step 2



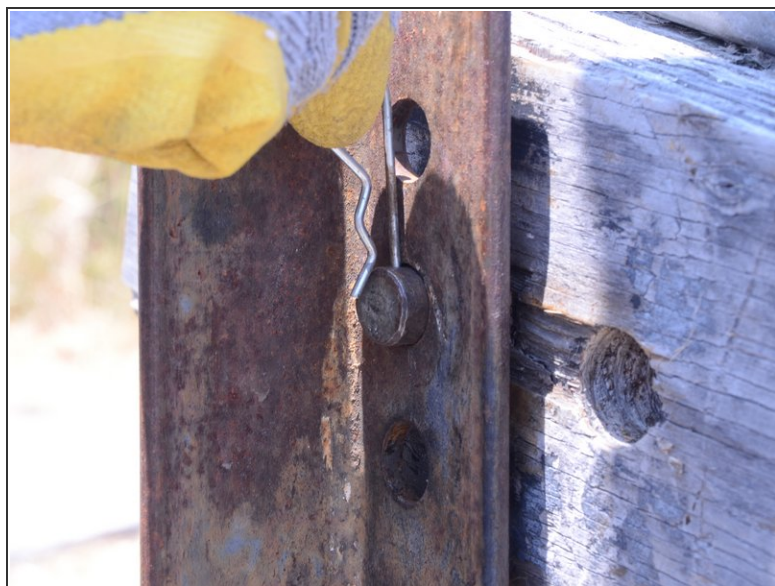
- Remove the two pins connecting the handle to the slider.

### Step 3



- Pull the two lever arms away from the slider.

### Step 4



- Lift the two pins attaching the pump frame to the head and handle up, off of the pump frame.

## Step 5



- ⓘ Throughout this step, make sure you support the handle and head with at least three hands.
  - Slide the bearing rod out of the head.
- ⓘ Inspect the bearing rod and head for any wear or tear.

## Step 6



- Remove the head and handle, and place them on a clean surface to prevent contamination.

To reassemble your device, follow these instructions in reverse order.