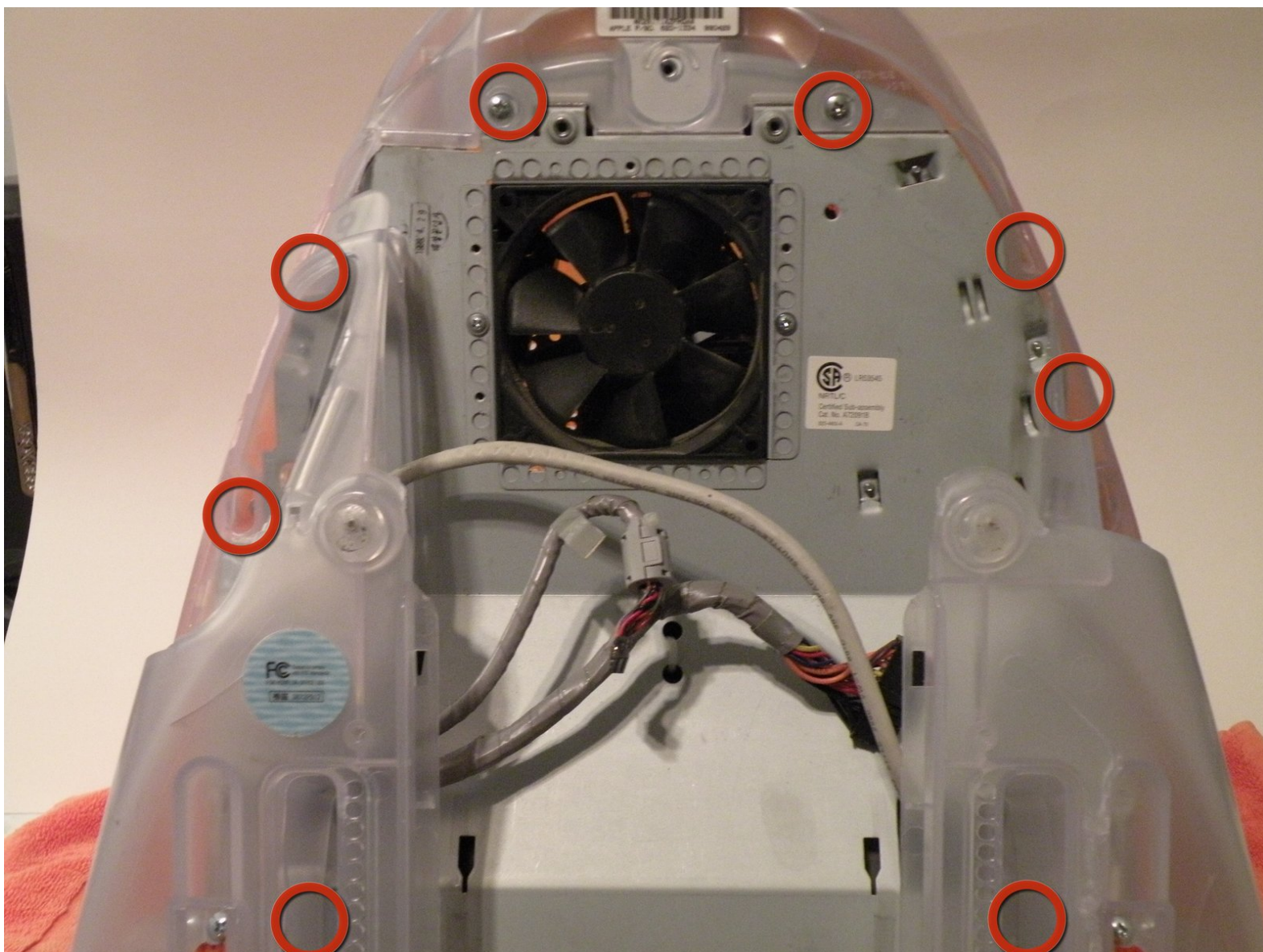




iMac G3 Model M4984 Power Supply Replacement

Written By: Chris Green



INTRODUCTION

The iMac uses an incredibly hard to get to power supply. It has 24-Pins. This will require taking the iMac fully apart.



TOOLS:

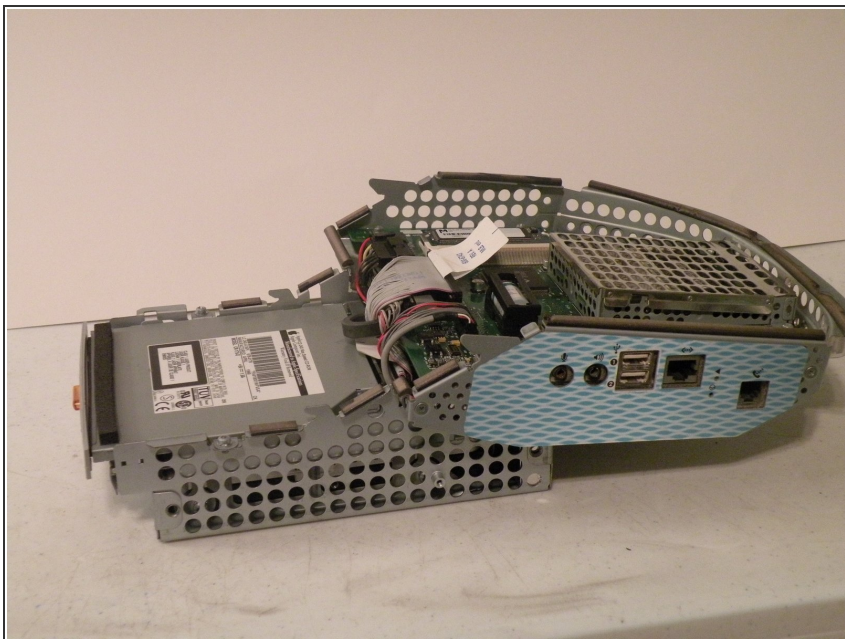
- [6-in-1 Screwdriver](#) (1)
- [Phillips #0 Screwdriver](#) (1)
- [Phillips #00 Screwdriver](#) (1)



PARTS:

- [661-2081 \(Rev 1\)](#) [661-2167 \(Rev 2\)](#) (1)

Step 1 — Logic Board



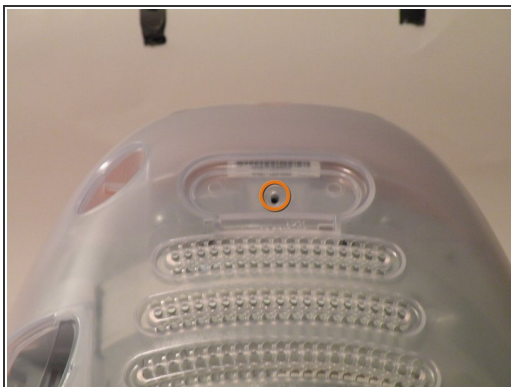
- The iMac G3. This was a great computer for the time, and had plenty of features.

Step 2



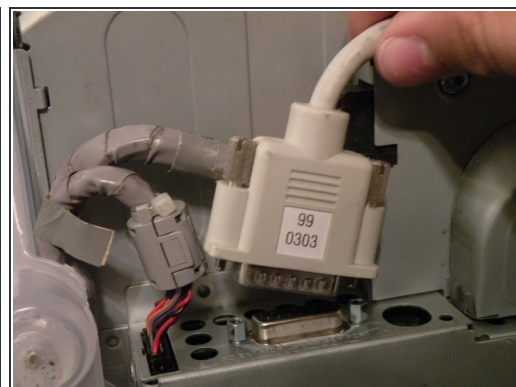
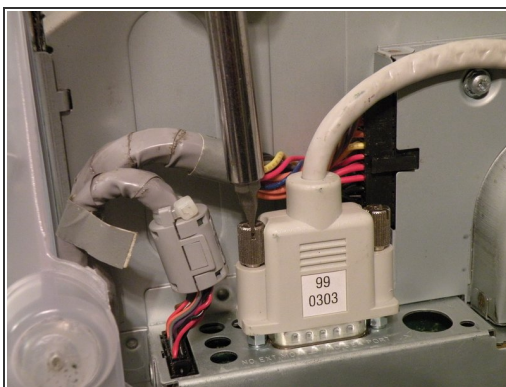
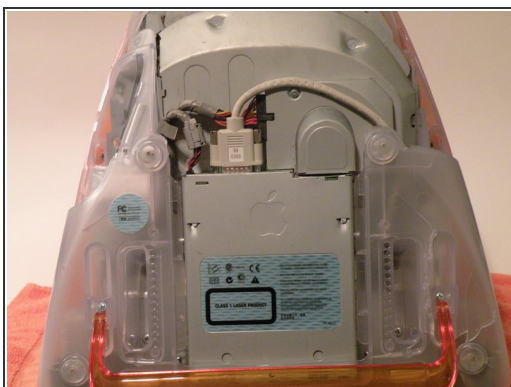
- Start by flipping the iMac upside-down. It may help to lay it on a towel, so you don't damage the screen, or scratch the face.

Step 3



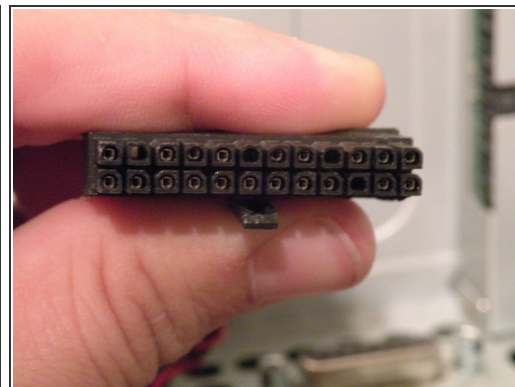
- Remove this Phillips screw.
- Using a flathead screwdriver, work your way around the bottom cover, until it comes off.
- Then, lift the bottom cover up and out, and set it aside.

Step 4



- Now, remove the DB-15 Video connector from the logic board.
- It may be helpful to use a Phillips screwdriver to remove the thumbscrews.

Step 5



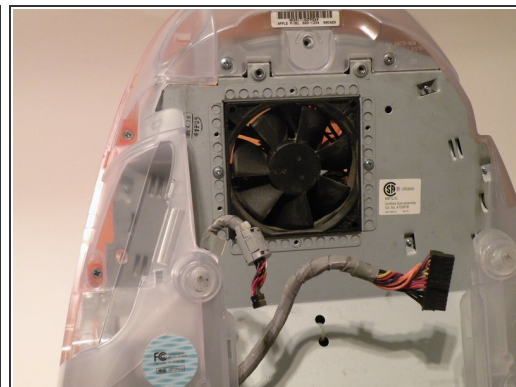
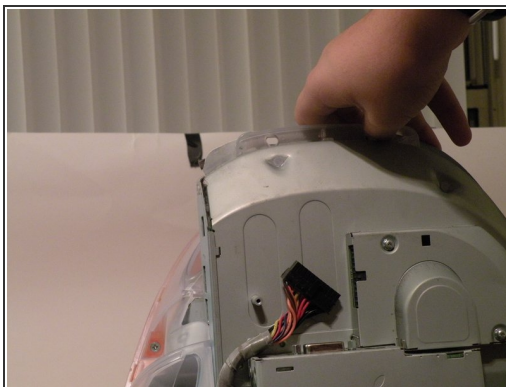
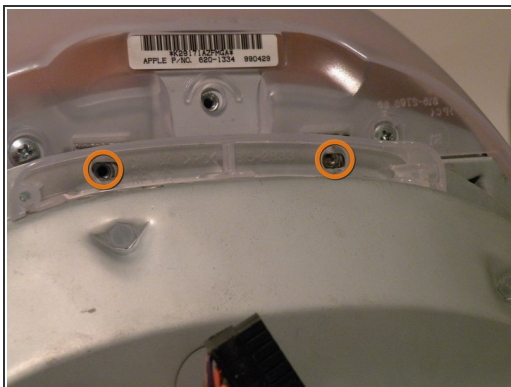
- Remove the power cable from the logic board assembly.

Step 6



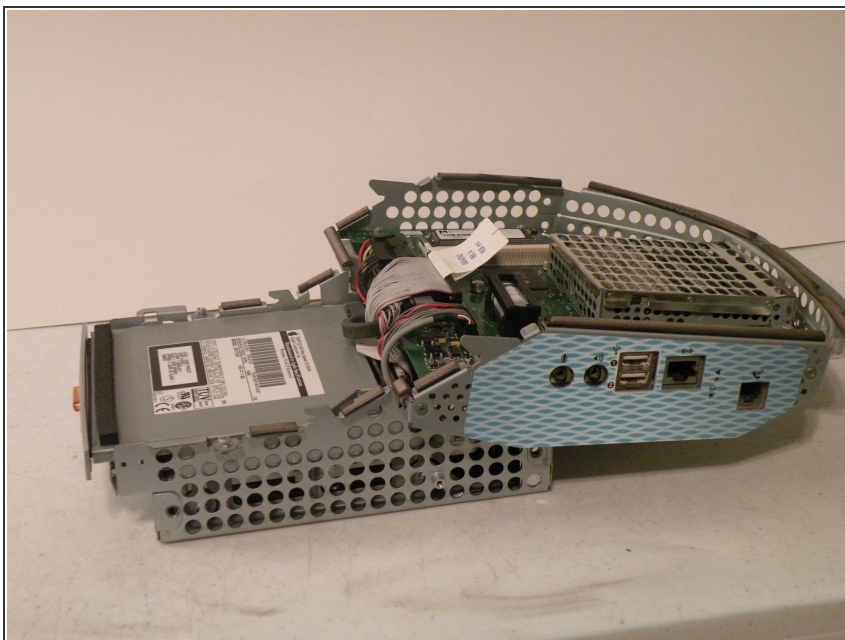
- Remove the front panel connector. (You may also need to remove an additional screw that connects the front panel connector to the logic board assembly).

Step 7



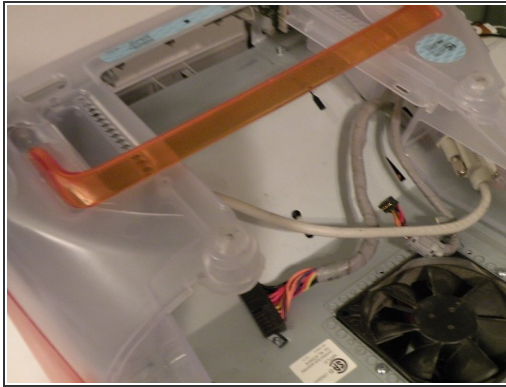
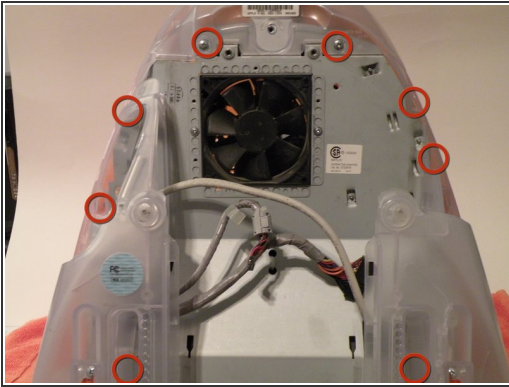
- Now, remove these Phillips screws.
- Now, grab the logic board assembly by the piece of plastic, and lift it out.

Step 8



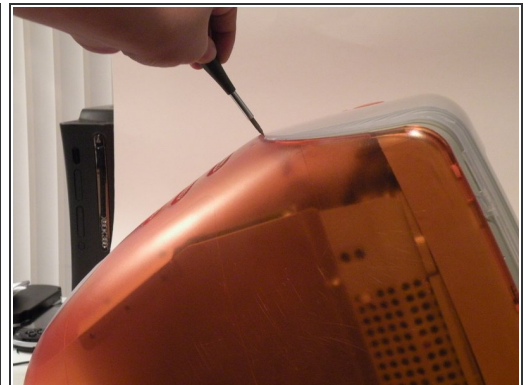
- The logic board assembly. This is the heart of the computer, it contains the motherboard, CPU, RAM, V-RAM, PRAM battery, the hard drive, and the optical drive.

Step 9 — Power Supply



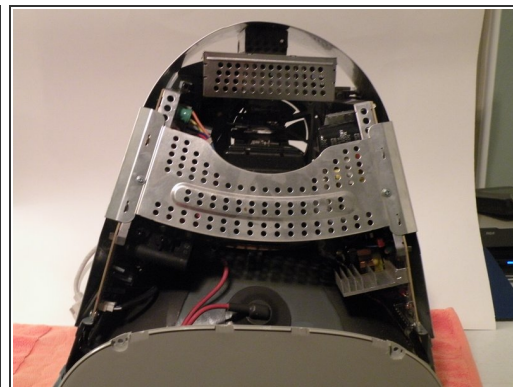
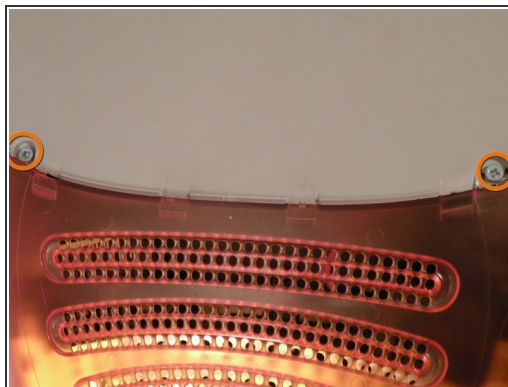
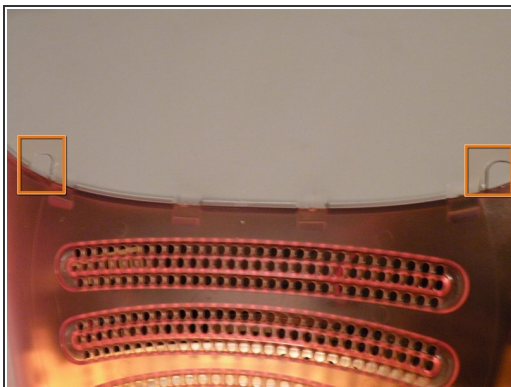
- Now, remove these screws.
- Now, lift the bottom cover off.

Step 10



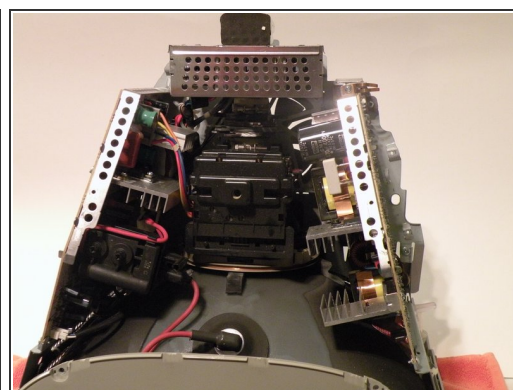
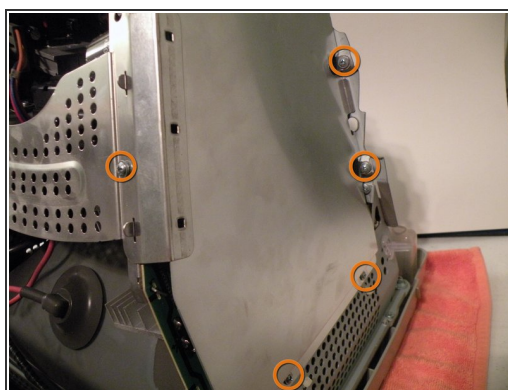
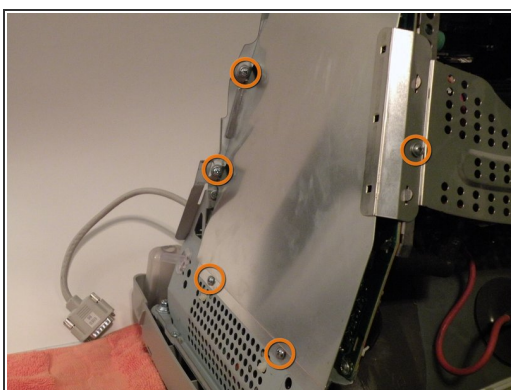
- Removing the front bezel:
- There isn't a great position to put the iMac in to remove the front bezel. I recommend flipping it so it like it would normally be positioned.
- Remove these two Phillips screws.
- Now, work your way around the bezel with a flathead screwdriver, and then, pivot it up towards the top, and remove it.

Step 11



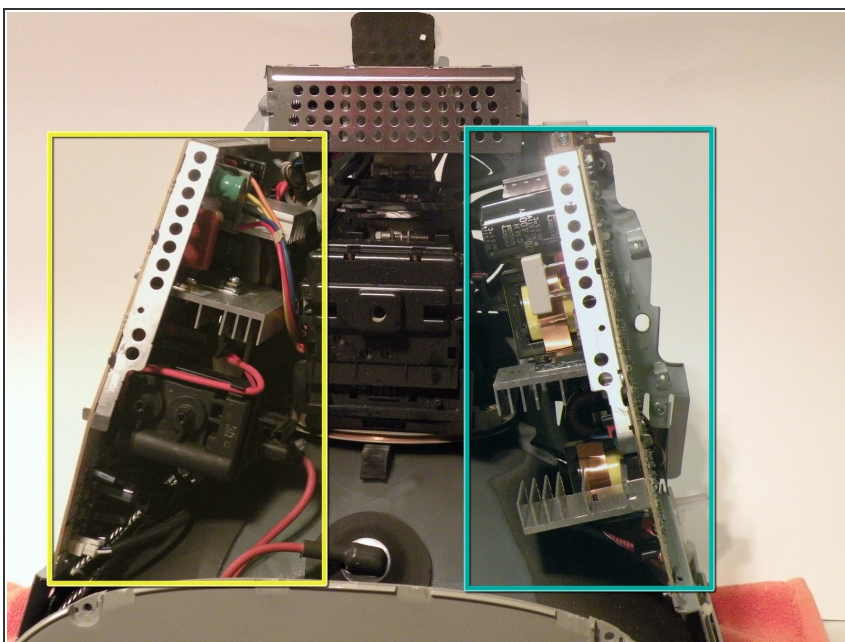
- Removing the translucent plastic:
- Removal of the front bezel will reveal two screw covers on the top, pop them off with a Phillips screwdriver.
- Now, use a Phillips screwdriver to remove the screws.
- You can now remove the plastic.

Step 12



- Removing the EMI Shield:
- Remove all 10 of these screws, and lift the EMI Shield off.

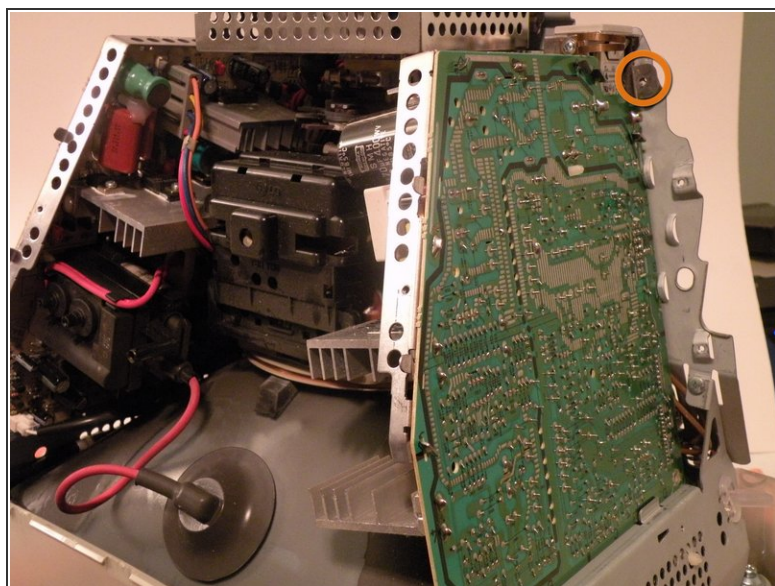
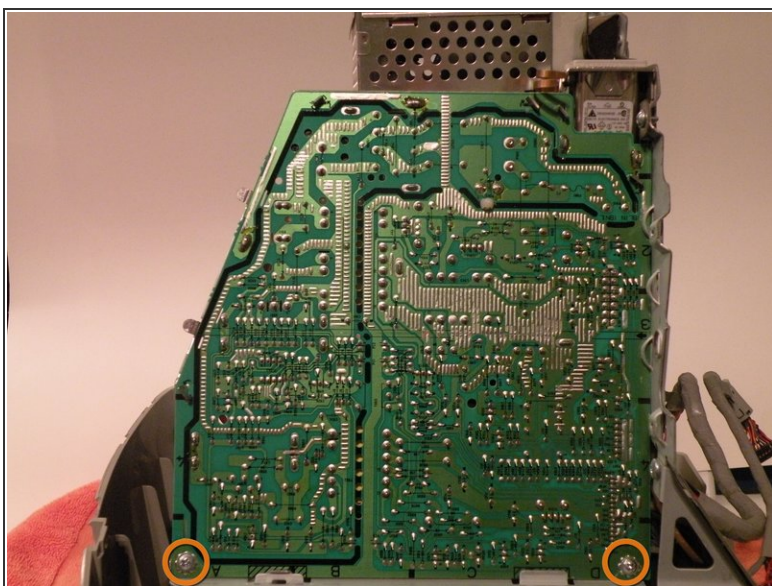
Step 13



- Power Supply:
- Removal of the EMI shield will reveal two major circuit boards.
- The Display Driver:
- The Power Supply:

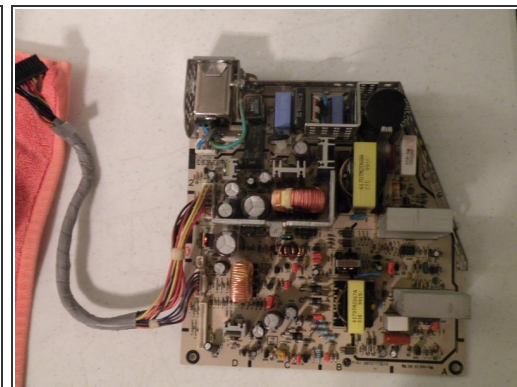
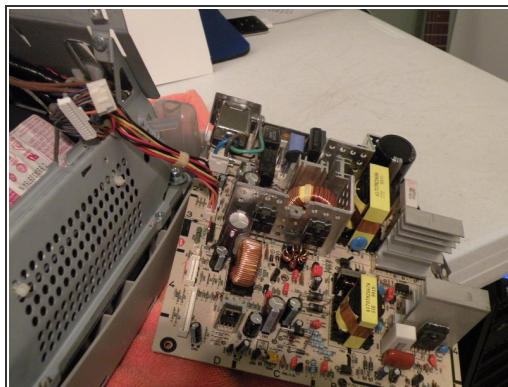
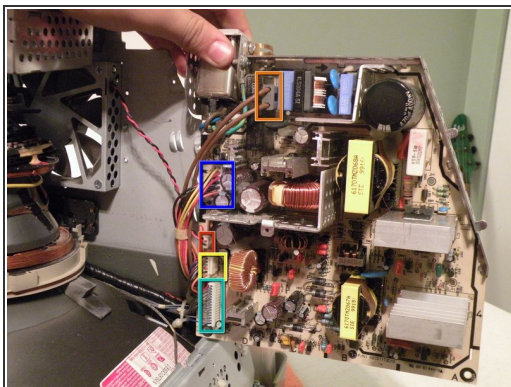
⚠ The power supply and driver board are dangerous, if you do not know what you are doing, you could severely injure or kill yourself.

Step 14



- Remove these three screws.

Step 15



- Now, swing the board out, and remove the following connectors:
- AC Power
- To System Fan
- Don't remove this. It comes free with the logic board power.
- To Display Driver
- The connector that is attached to the logic board; to remove it, simply thread it through the hole in the metal:
- Now, you should be able to remove the power supply.

To reassemble your device, follow these instructions in reverse order.