



MacBook Pro 13" Retina Display Early 2013 AirPort Board Replacement

Use this guide to replace the AirPort board.

Written By: Sam Goldheart



INTRODUCTION

Use this guide to replace the AirPort board.



TOOLS:

MacBook Pro and Air 5-Point Pentalobe Screwdriver (1)
iFixit Opening Tool (1)
Spudger (1)
T5 Torx Screwdriver (1)
T6 Torx Screwdriver (1)
Tweezers (1)



PARTS:

MacBook Pro 13" and 15" Retina (Late 2012-Early 2013) Airport/Bluetooth Board (1)

Step 1 — Lower Case



- Remove the following ten screws securing the lower case to the upper case:
 - Two 2.3 mm P5 Pentalobe screws
 - Eight 3.0 mm P5 Pentalobe screws
- ☑ Throughout this repair, [keep track of each screw](#) and make sure it goes back exactly where it came from to avoid damaging your device.

Step 2



- Wedge your fingers between the upper case and the lower case.
- Gently pull the lower case away from the upper case.
- Remove the lower case and set it aside.

Step 3



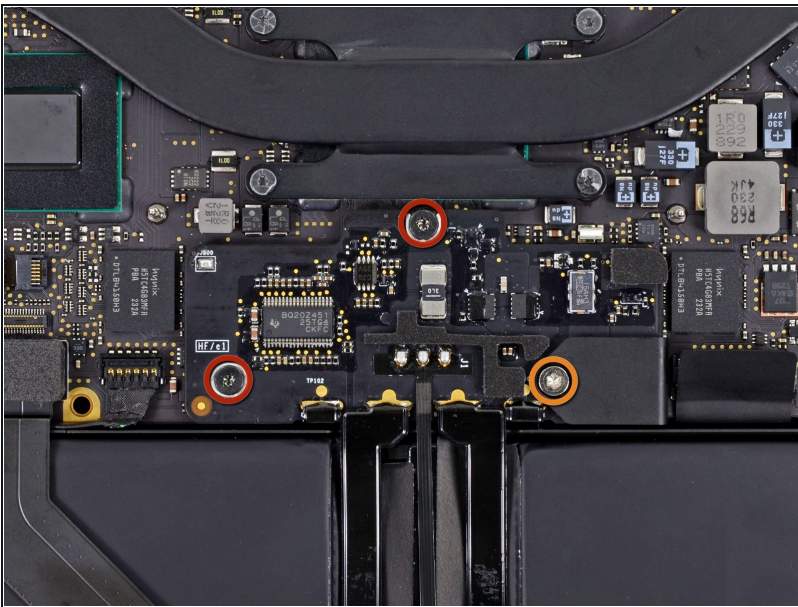
- ★ During reassembly, gently push down the center of the lower case to reattach the two plastic clips.
- The lower case is connected to the upper case at the center, with two plastic clips.

Step 4 — Battery Connector



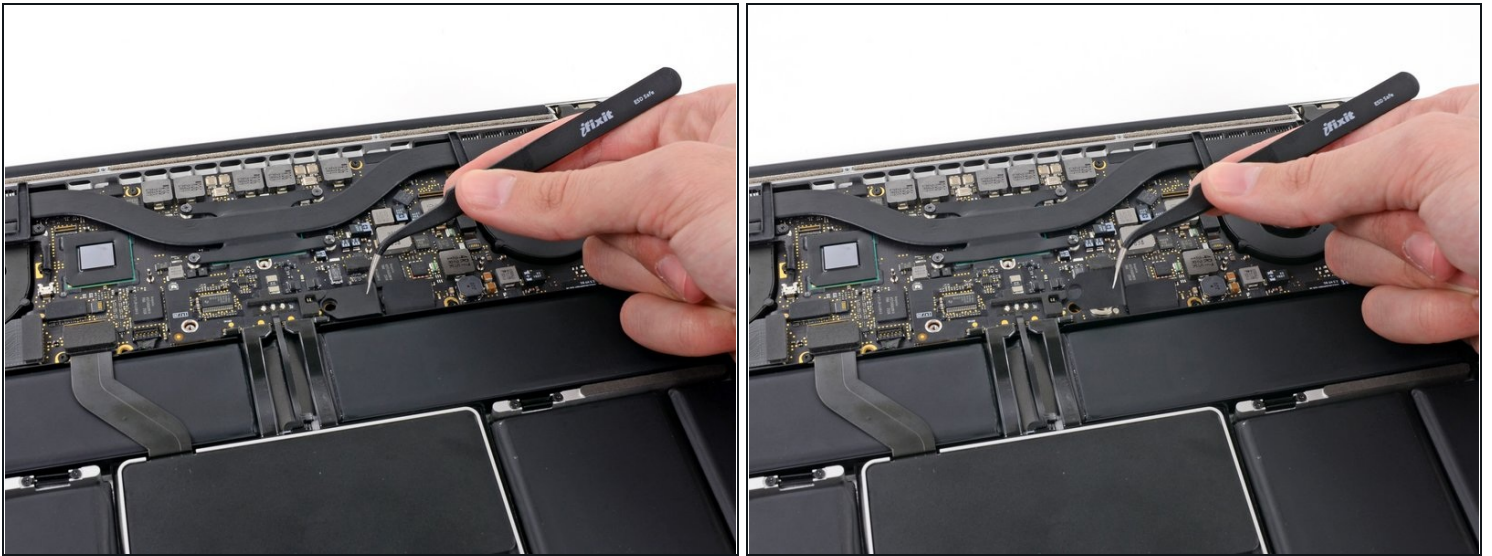
- Remove the plastic cover adhered to the battery contact board.

Step 5



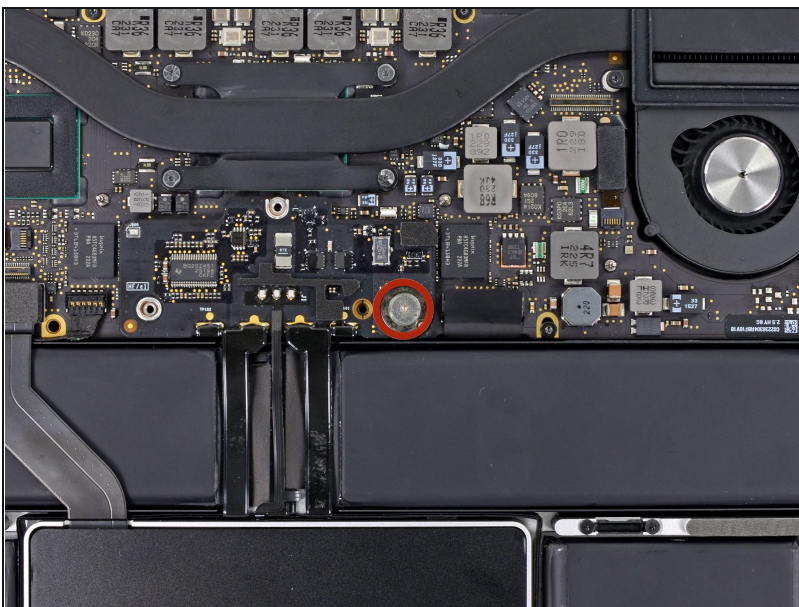
- Remove the following screws securing the battery connector board to the logic board:
 - Two 2.8 mm T6 Torx screws
 - One 7.0 mm T6 Torx shouldered screw

Step 6



- Use [tweezers](#) to remove the small plastic cover located near the bottom right of the battery connector board.

Step 7



- Remove the wide head 6.4 mm T6 Torx screw securing the battery connector to the logic board assembly.

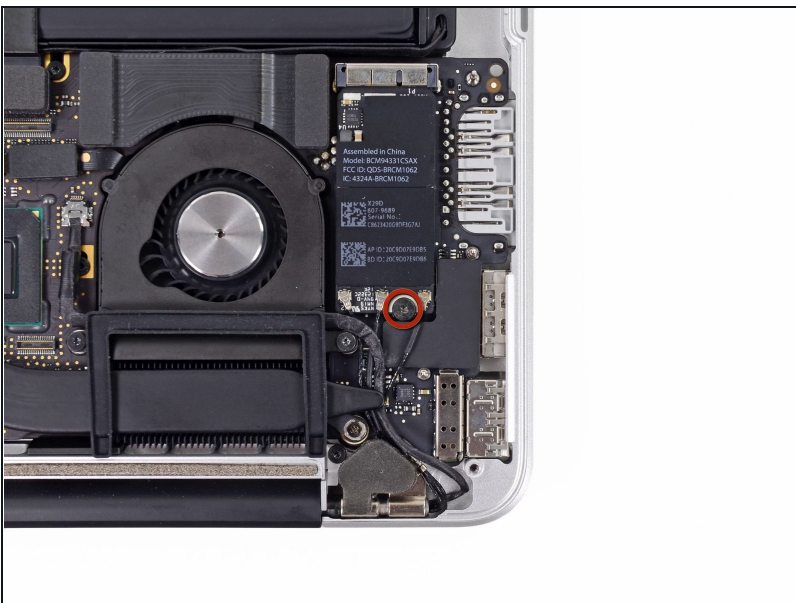
Step 8



- Carefully lift the battery connector board up off the logic board.
- It is recommended to bend the battery cables just slightly, to keep the board suspended up above the logic board and out of the way.

⚠ Do not fold the board completely over, or crease the cables, as this may damage the battery.

Step 9 — AirPort Board Assembly



- Remove the single 2.7 mm T5 Torx screw securing the AirPort board to the I/O board.

Step 10



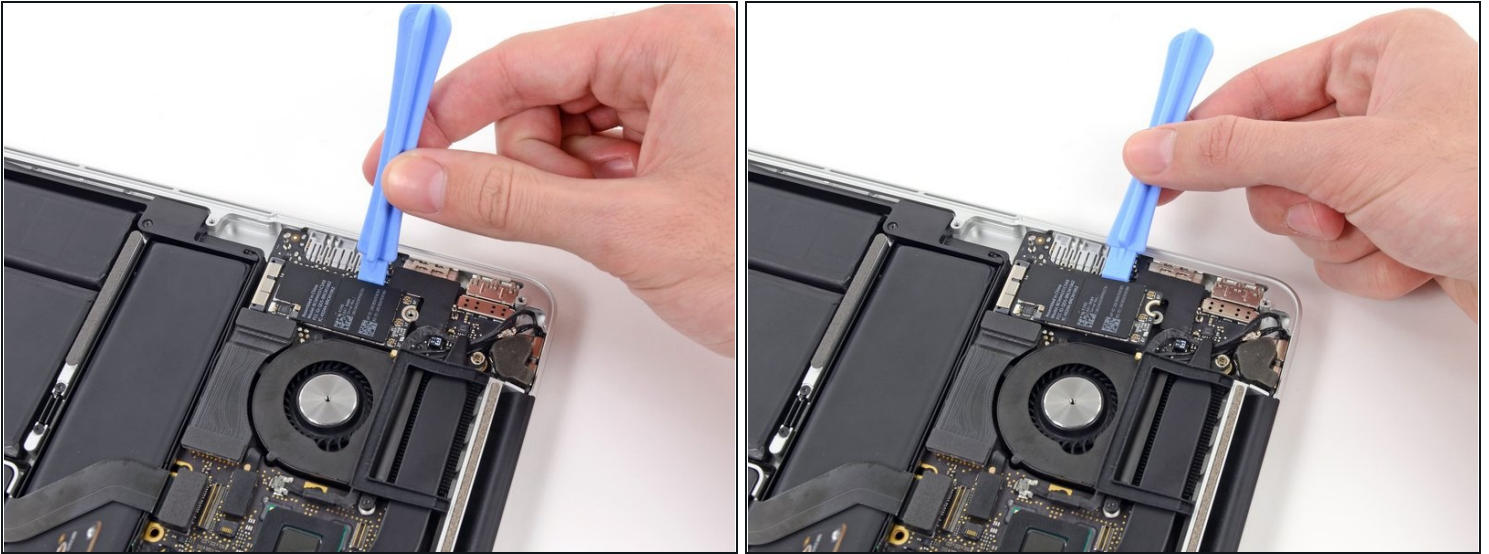
- Use the flat end of a spudger to pry and disconnect the three antenna cable connectors from the AirPort board.
- ☑ The three cables are coded with black sleeves of different lengths. During reassembly:
 - Connect the long-sleeved cable to the center socket.
 - The short-sleeved cable connects next to the screw.
 - The remaining cable has no sleeve, and connects in the last empty socket, next to the fan.

Step 11



- Move the antenna cables aside, clear of the AirPort board.

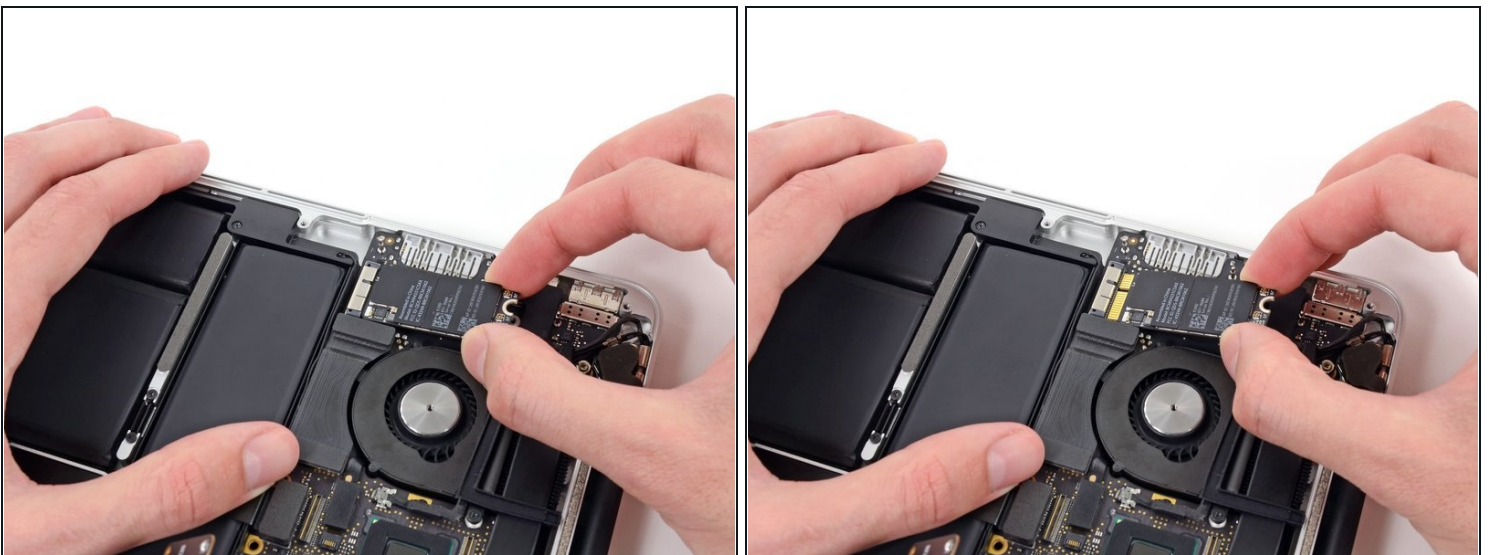
Step 12



- Wedge a plastic opening tool between the AirPort board (side nearest the I/O ports) and the I/O board.
- Gently pry the AirPort board upwards, but do **not** remove it.

⚠ Only lift the AirPort board as much as is necessary to get a grip on it. Lifting it too high above the I/O board may damage the board or the socket.

Step 13



- Pull the AirPort board straight out of its socket on the I/O board.

Step 14 — AirPort Board



- AirPort board remains.

To reassemble your device, follow these instructions in reverse order.