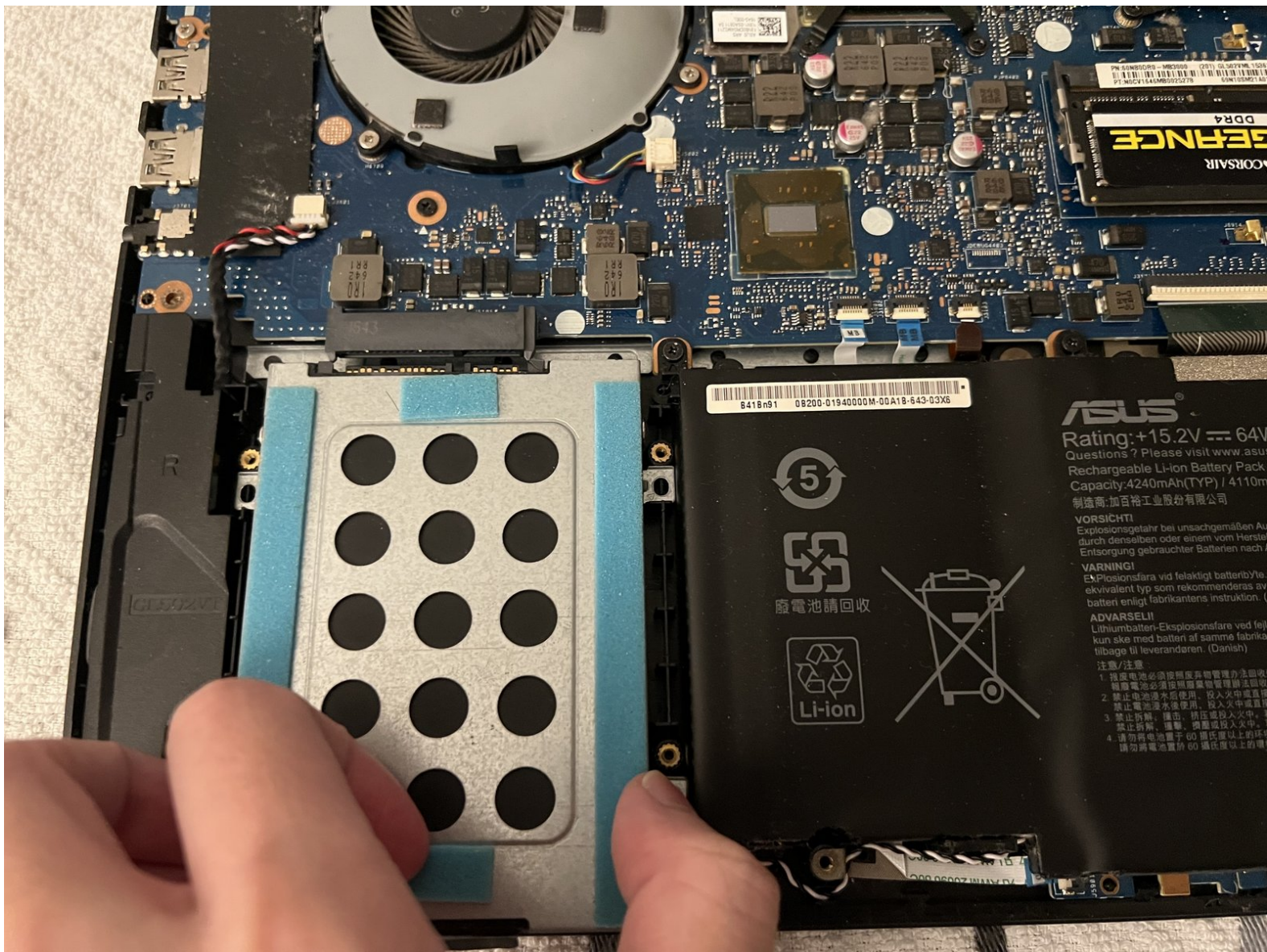




Asus ROG FX60VM Hard Drive Replacement

This guide will show you how to replace the...

Written By: JingZhao Liang



INTRODUCTION

This guide will show you how to replace the hard drive from your Asus ROG FX60VM laptop.

The hard drive is a component that stores and retrieves data in your computer. If your hard drive is running low on storage or failing (making irregular noises or constantly crashing), it may be time to replace your hard drive.

However, before you start, make sure you've made a copy of your data so you don't lose it while you're doing the replacement. Also be sure to power off your device and unplug from the power outlet before you begin the repair.



TOOLS:

- [Phillips #1 Screwdriver](#) (1)
- [Halberd Spudger](#) (1)
- [iFixit Opening Picks \(Set of 6\)](#) (1)
- [Phillips #0 Screwdriver](#) (1)



PARTS:

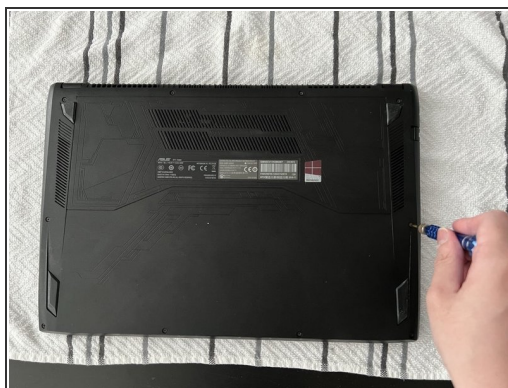
- [Crucial MX500 1 TB SSD](#) (1)
- [Crucial MX500 250 GB SSD](#) (1)
- [Crucial MX500 500 GB SSD](#) (1)
- [Crucial MX500 2 TB SSD](#) (1)

Step 1 — HDD



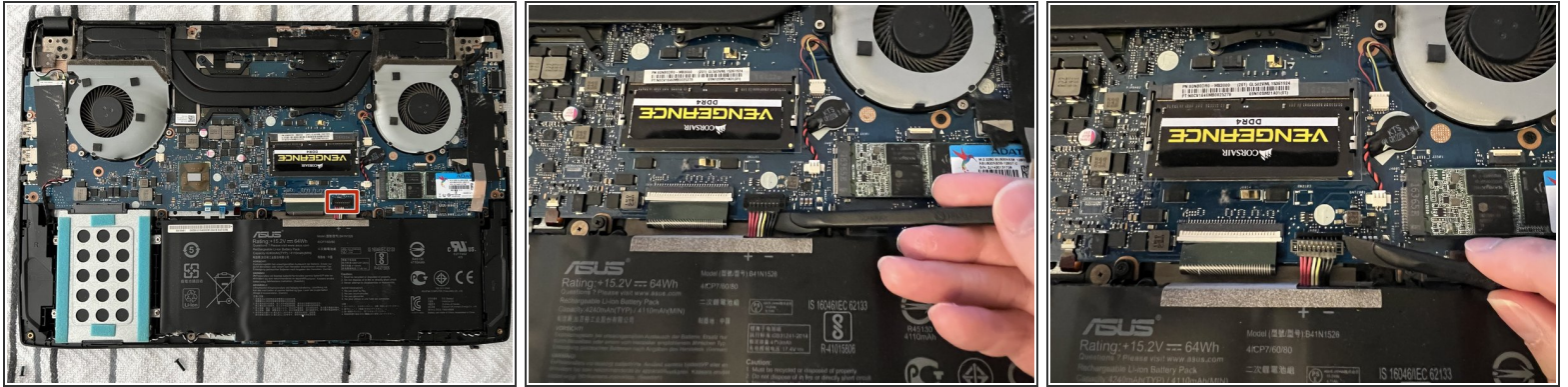
- Before disassembling the laptop, turn the laptop off and make sure it's unplugged from the power supply.

Step 2



- Flip the laptop over so the back case is facing up.
- Remove the ten 2.5 mm screws from the back case using a Phillips #0 screwdriver.
- Use a plastic opening tool and picks to pry the back panel off of the device.

Step 3



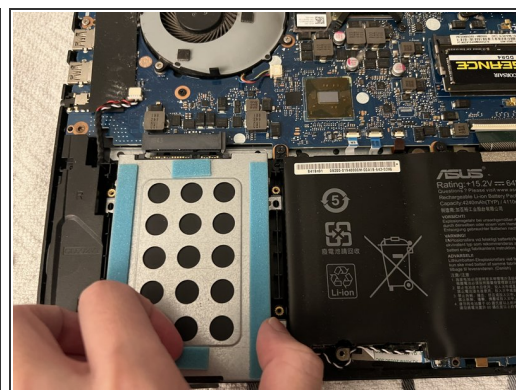
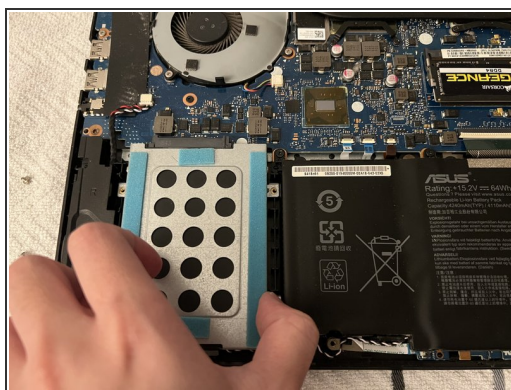
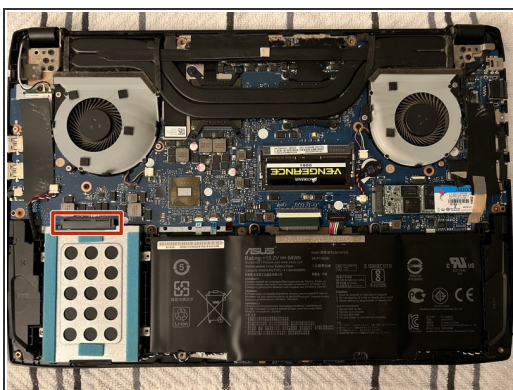
- Put the tip of Halberd spudger under the battery connector and lift it gently to disconnect it from the motherboard.
- ❗ You may need to wiggle the spudger up and down in order to disconnect the battery connector.

Step 4



- Remove the four 3.0 mm screws from the HDD case using a Phillips #1 screwdriver.

Step 5



⚠ Do not lift the HDD up, as you may damage the connector highlighted in red.

- Hold the back of the HDD , and slide it out of the port to disconnect it from the motherboard.

Step 6



- Remove the two 3.0 mm screws on each side of the HDD mounting bracket using a Phillips #1 screwdriver.
- Lift the HDD out of the mounting bracket, and install a new HDD or SSD to the mounting bracket.

To reassemble your device, follow these instructions in reverse order.

After install a new HDD or SSD, for better performance, initialize the new disk.

Take your e-waste to an R2 or e-Stewards certified recycler.