



Linksys Velop WHW01 Teardown

Written By: Lewis L. Foster





TOOLS:

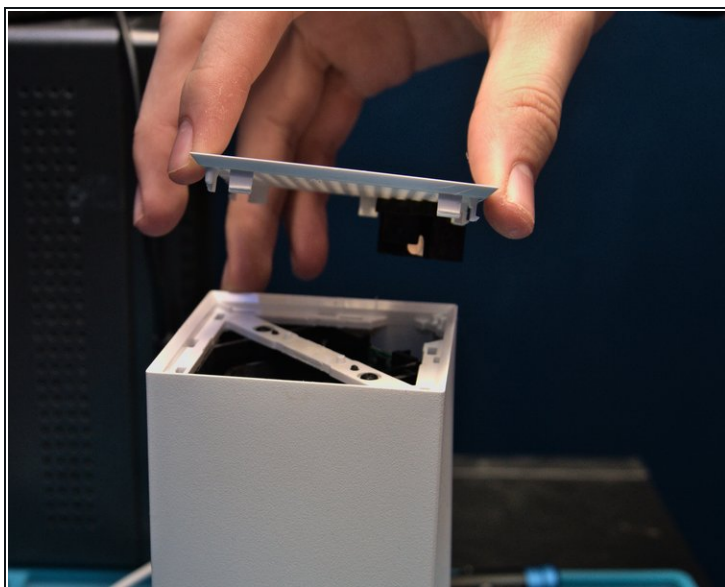
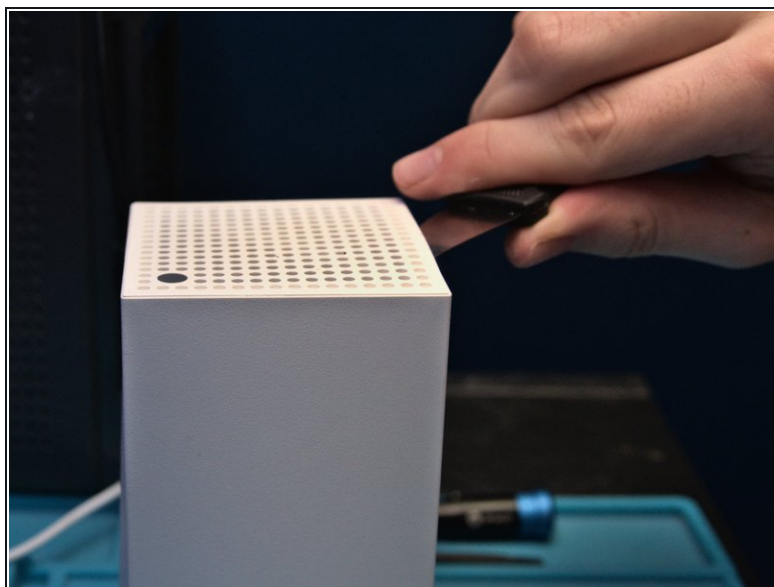
[Jimmy](#) (1)

[T6 Torx Screwdriver](#) (1)

[Phillips #00 Screwdriver](#) (1)

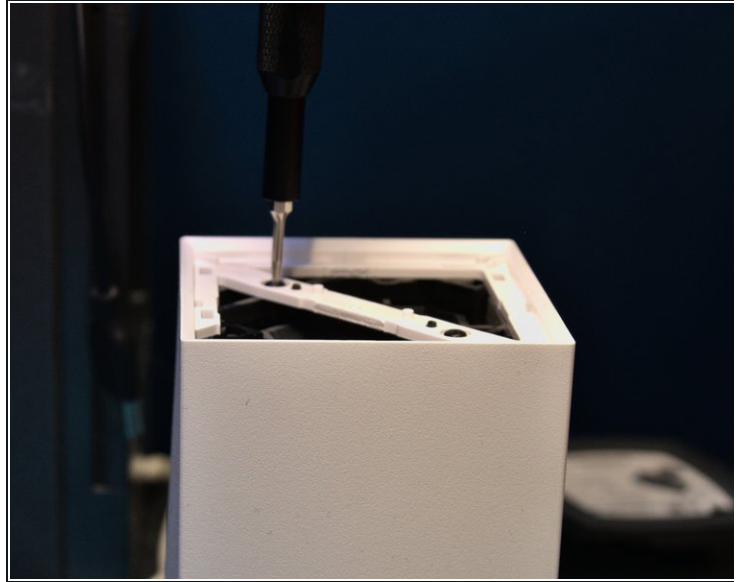
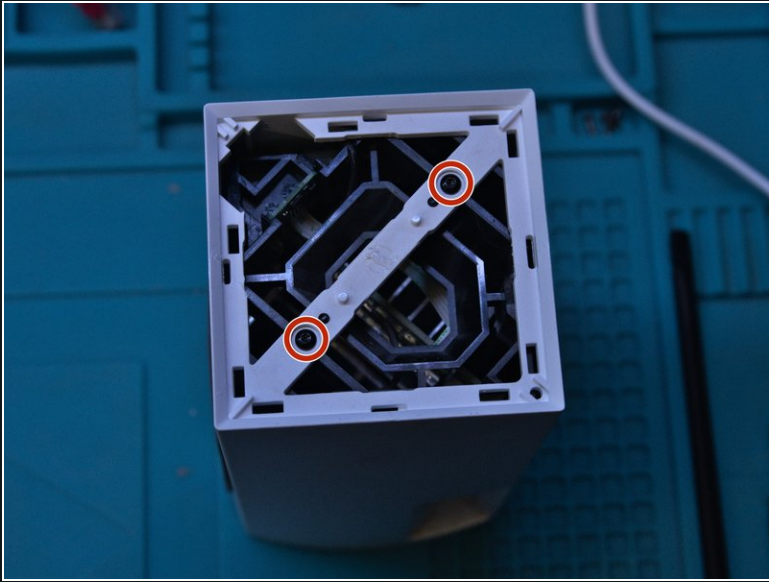
[Spudger](#) (1)

Step 1 — Unclip the top cover



- To unclip the top cover, insert a [Jimmy](#) at the seam and pry upwards.

Step 2 — Unscrew the outer case



- Use a [Torx T6 screwdriver](#) to unscrew the two screws that were previously hidden under the top cover.

Step 3 — Remove the rubber strips



- Use a [Spudger](#) to peel off the rubber strips at the base.

i Make sure to not tear them apart.

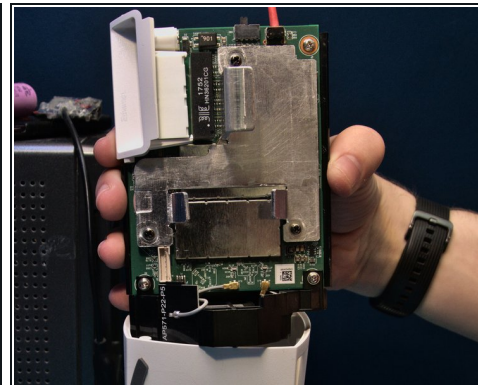
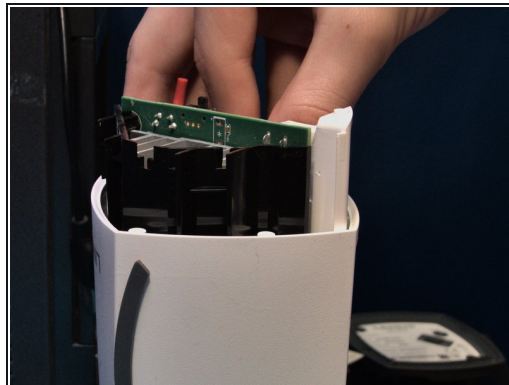
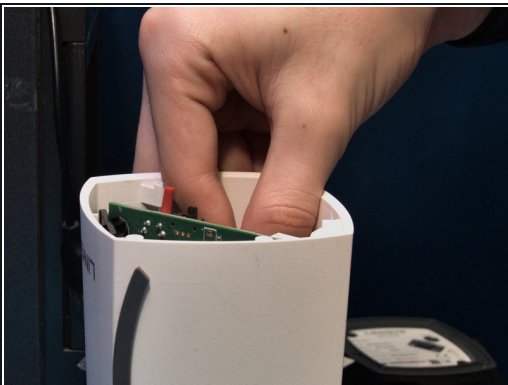
Step 4 — Unscrew the base



- Use a [Torx T6 screwdriver](#) to unscrew the four screws that were under the rubber feet.

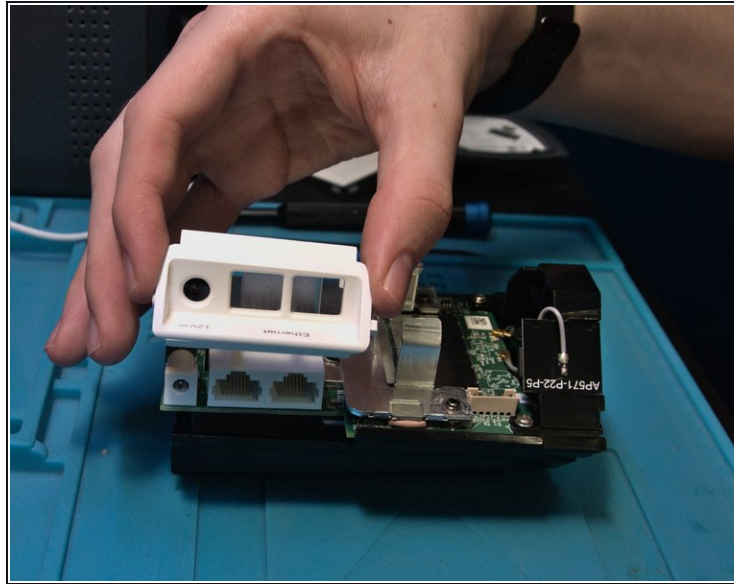
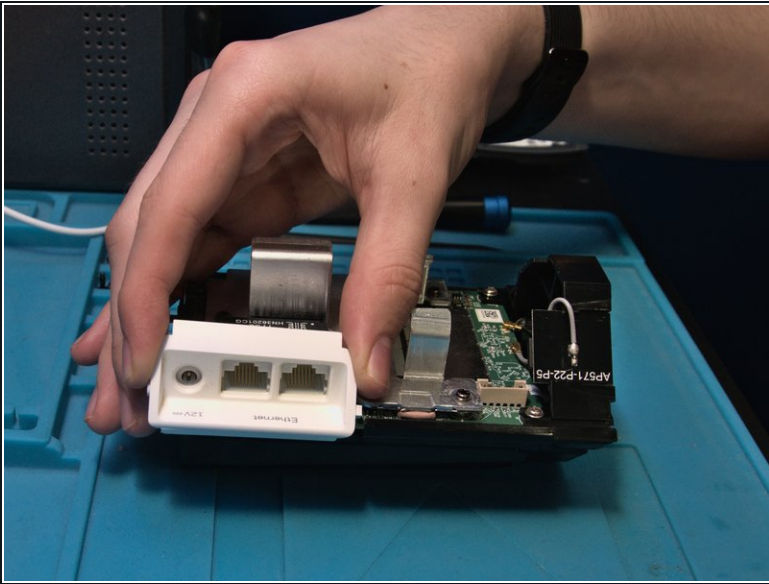
i After removing the screws, the bottom cover can be lifted off.

Step 5 — Remove the outer cover



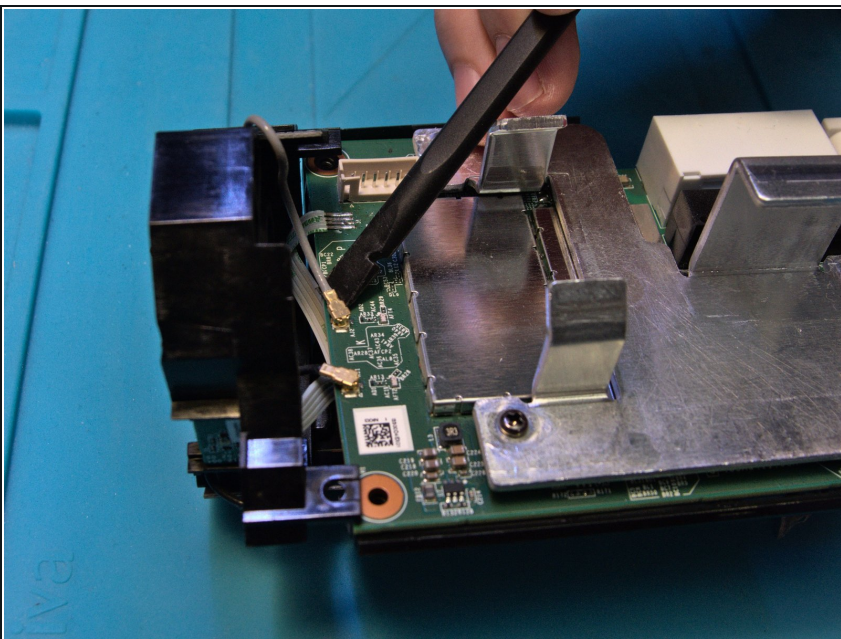
- Carefully pinch and pull up on the internal plastic bracket.
- The main board, antenna and LED assembly should slide out without any force needed.

Step 6 — Remove the port cover



- Lift up on the plastic surrounding the power input and ethernet ports.
- You may need to give it a jiggle to come loose.

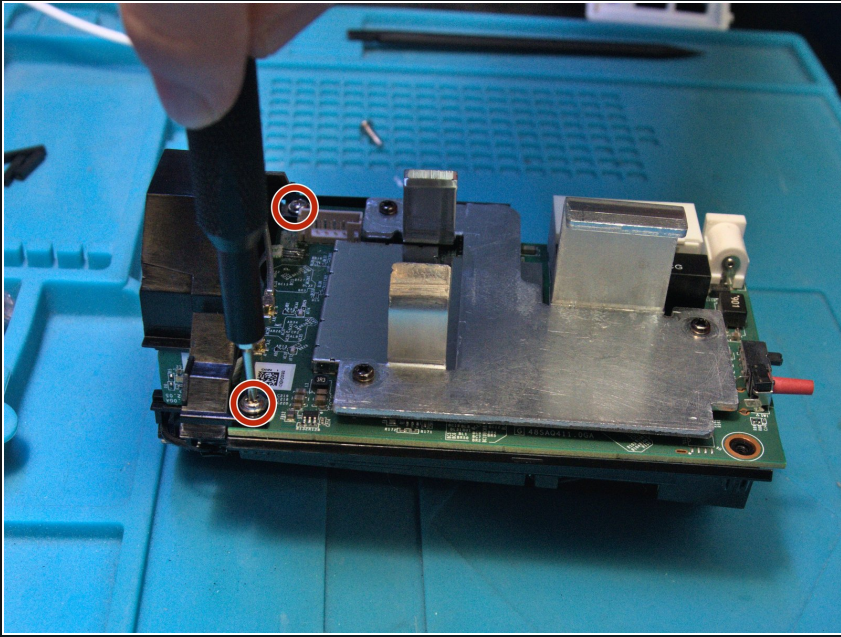
Step 7 — Unclip the WiFi antenna



- Unclip the WiFi antennas from the main board.

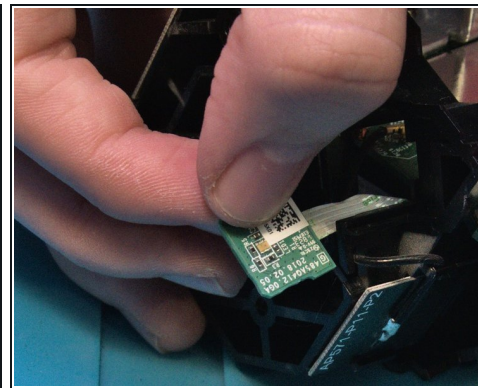
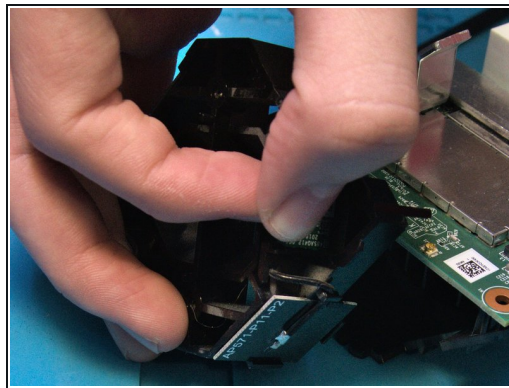
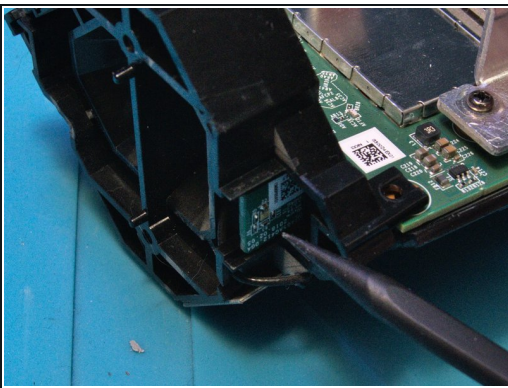
⚠ Use a [Spudger](#) to not cause any damage, these connectors can be very fragile!

Step 8 — Unscrew the antenna bracket



- Use a [Phillips #00 Screwdriver](#) to unscrew the two screws holding the antenna bracket.

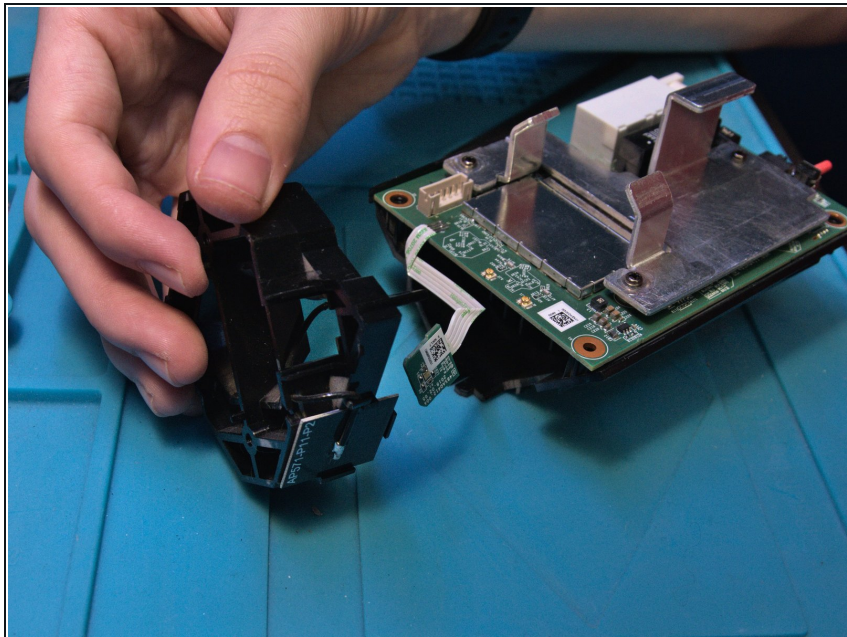
Step 9 — Slide out the LED module



- Carefully pull the LED module out of the groove its slid into.

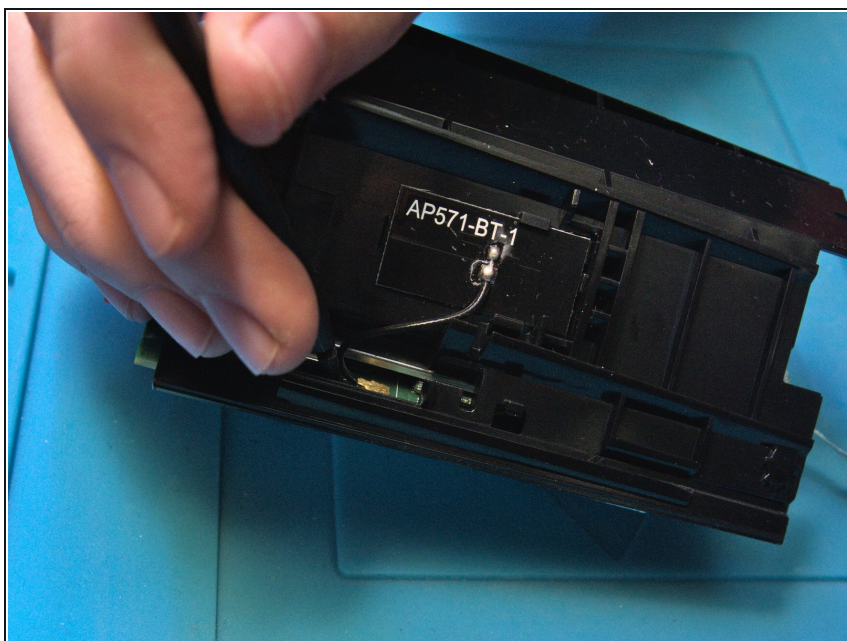
⚠ Be careful with the highly fragile ribbon cable, it is soldered on the LED and main board and does not detach!

Step 10 — Remove the antenna bracket



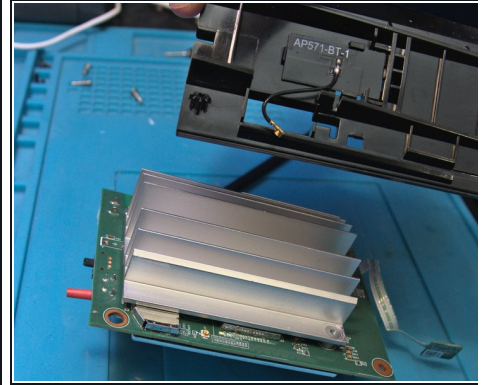
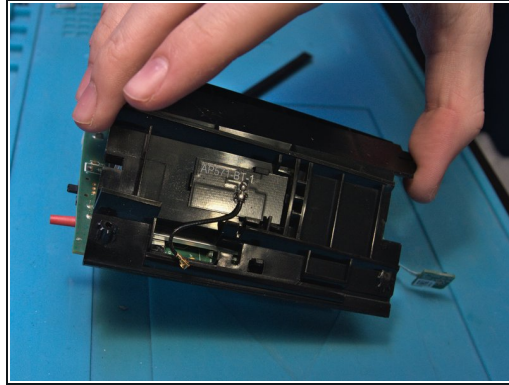
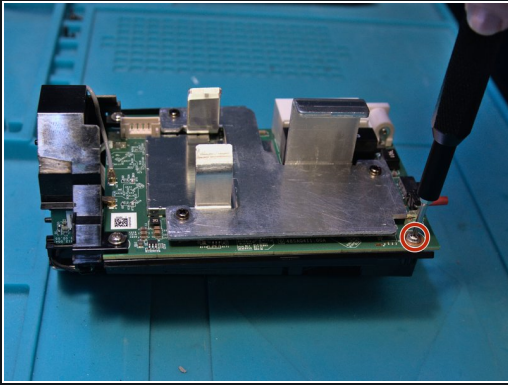
- Lift off the antenna bracket, being mindful of the LED module.

Step 11 — Unclip the bluetooth antenna



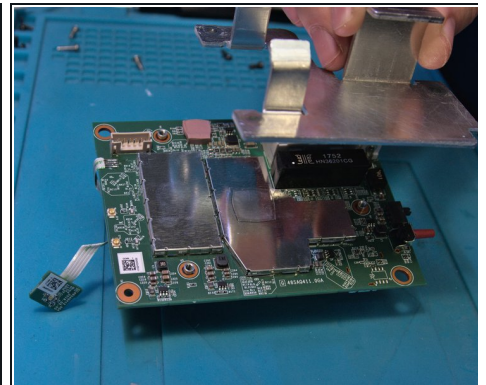
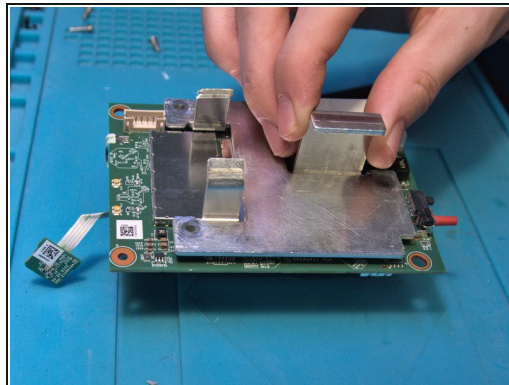
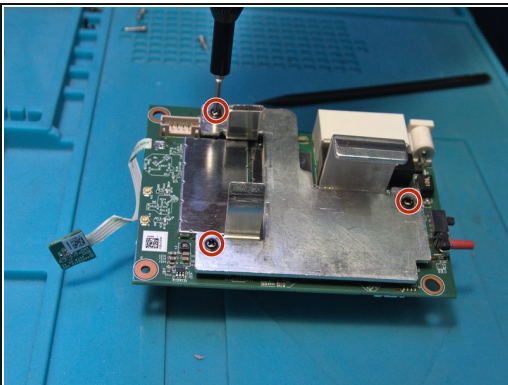
- Unclip the Bluetooth antenna, the same procedure as the WiFi antennas.

Step 12 — Remove the plastic bracket



- Use a [Phillips #00 Screwdriver](#) to unscrew the screw holding the rear plastic bracket.
- Turn the assembly around and lift the bracket off the main board.

Step 13 — Remove the front heatsink



- Use a [Phillips #00 Screwdriver](#) to unscrew the three screws securing the heatsink.
- After removing the screws you will need to twist it side to side a little bit due to the thermal pad.

Step 14 — Remove the back heatsink



- After removing the upper heatsink, the heatsink on the back of the board can be removed using a similar process to the top heatsink.
- ❗ Only small and gentle side to side movement is needed to release the thermal pads.