



RYOBI ONE+ 18V 13in Cordless String Trimmer Line Replacement

replace the trimmer line to a weed wacker.

Written By: Matthew Flores



INTRODUCTION

If your RYOBI ONE+ 18V 13in Cordless Battery String Trimmer is in need of trimmer line replacement, use this guide to help you through the process.

I will be showing the safest and easiest step-by-step process of how to replace the trimmer line to your weed whacker.

Before we get started, try and get the help of another person as some steps might need two people. You might also need scissors to cut the string in Step 3 so keep those nearby.

This guide is written for the people who are having difficulties trying to replace the trimmer line to their new weed whacker or for those who are looking forward to upgrading their trimmer line of their current weed whacker.



TOOLS:

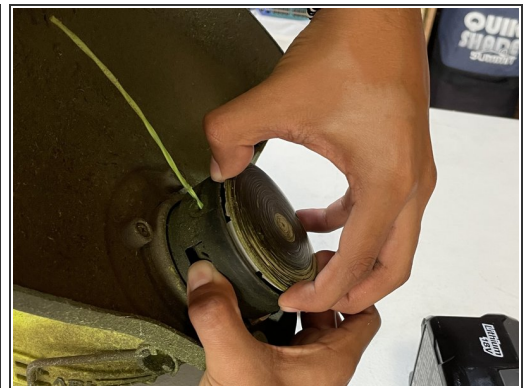
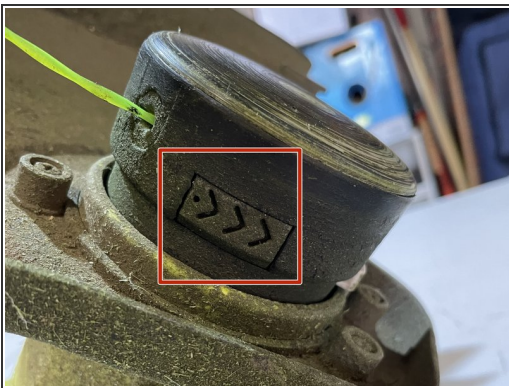
- [Utility Scissors](#) (1)
-

Step 1 — String Trimmer Line



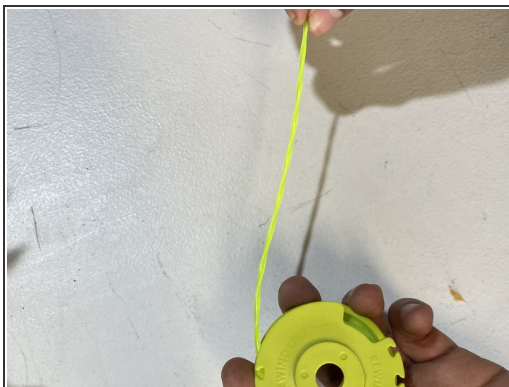
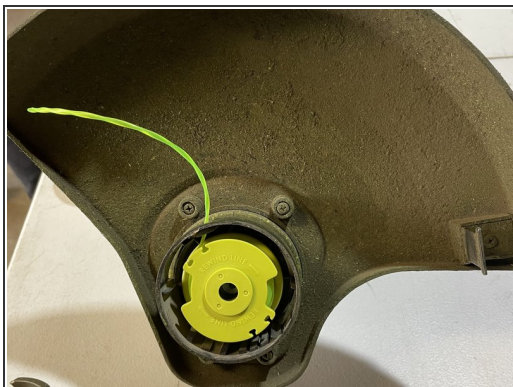
- Press down on the sides of the battery to remove it from the device.

Step 2



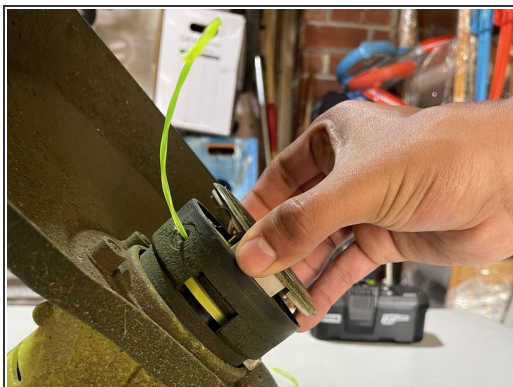
- Press down on the clips with one hand.
- Lift up the top cap with your other hand and remove it.

Step 3



- Remove the old trimmer line spool.
- Get the new trimmer line spool and extend the string to about 3-4 inches.
- Insert the new string through the hole.

Step 4



- Place the cap back on.
- If more string is needed, press down on the grey button and pull out more string.

Step 5



- Reinsert the battery.