



How to Fix a Honda GCV160 Lawnmower With Water in the Fuel Line

Fix your lawnmower by emptying out contaminated fluids from the fuel line.

Written By: Alonso Pantoja



INTRODUCTION

If your Honda GCV160 lawnmower doesn't start despite having a full tank, you may have gotten water caught in its fuel line. This guide will teach you how to remove the water from anywhere it may get caught and get the lawnmower working again.

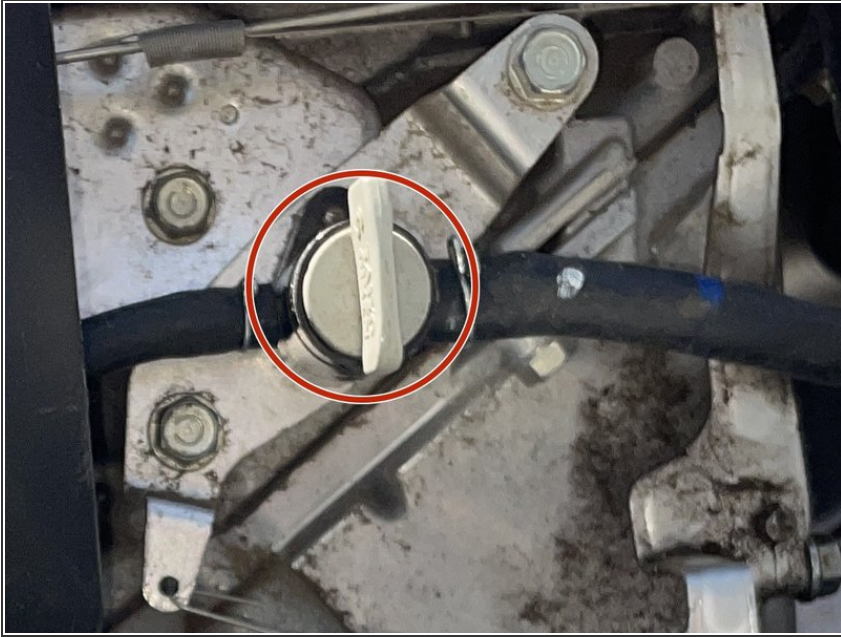
Note: Make sure to place the rag beneath the part of the lawnmower you are working on so any leaking fuel lands on the rag rather than on the lawnmower or the ground.



TOOLS:

- [10mm Wrench](#) (1)
 - [Shop Towels or Rags](#) (1)
 - [flathead screwdriver 7/32"](#) (1)
 - [Fuel Can](#) (1)
 - [Plastic Bottle](#) (1)
-

Step 1 — How to Fix a Honda GCV160 Lawnmower With Water in the Fuel Line



- Move the dial to a vertical position to close the fuel line.
- ⓘ This will prevent fluids from continuing to move freely throughout the lawnmower.

Step 2



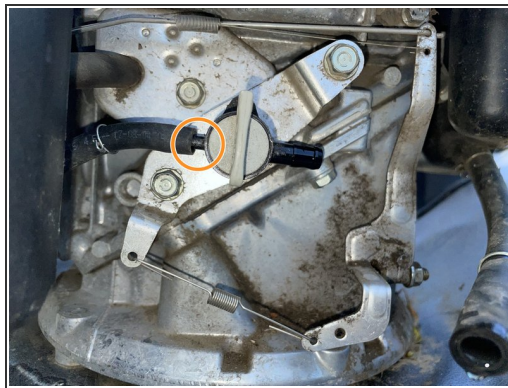
- Use the screwdriver to push the right tension pin to the right so the hose can be removed.
- Remove the right hose by wiggling the screwdriver between the hose and the tube where it is attached.
- ⓘ Have the empty bottle ready to use as soon as the hose is detached from the fuel line.

Step 3



- Place the hose into a bottle to catch the leaking fluid from the fuel tank.
- ⓘ More liquid will be released from the right hose than in any other part of the process.

Step 4



- Move the tension pin to the left to allow the hose to be removed.
- Remove the left hose and catch the fluids that leak out.

Step 5



- Remove the 10 mm bolt holding the carburetor fuel cup in place.
 - Remove the carburetor fuel cup
 - Use the rag to clean the inside of the carburetor fuel cup after it has been removed.
- i** Let any fluid released from removing the carburetor spill onto the rag.

Step 6



- Tilt the lawnmower forward so any remaining fluids can make their way out.

Step 7



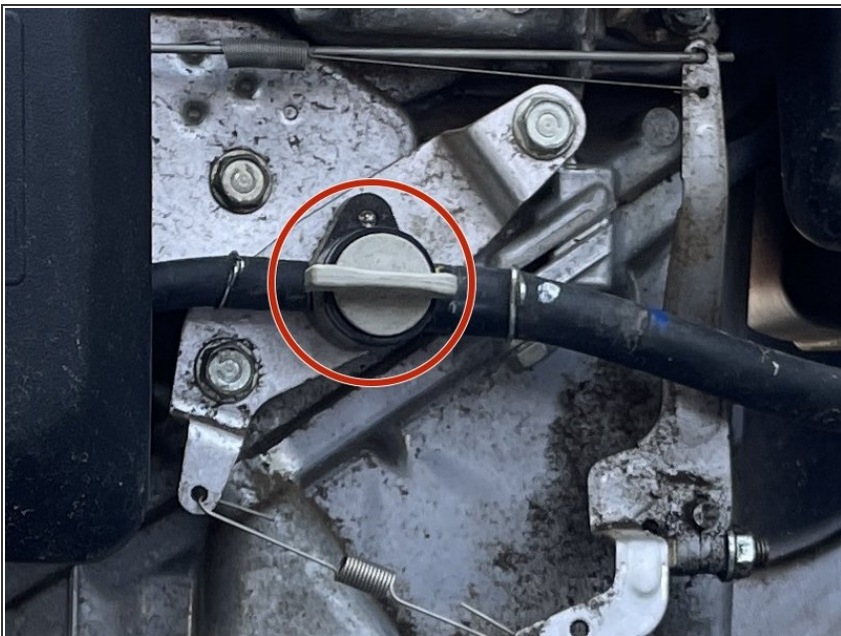
- Place the detached hoses back to the fuel line.
- Move the pins back to the end of the hose to hold them in place.

Step 8



- Use the fuel can to refill the lawnmower now that the contaminated fuel has been removed.

Step 9



- Turn the dial to a horizontal position to reopen the fuel line.

With the water out of the fuel line, the lawnmower should be ready for use.