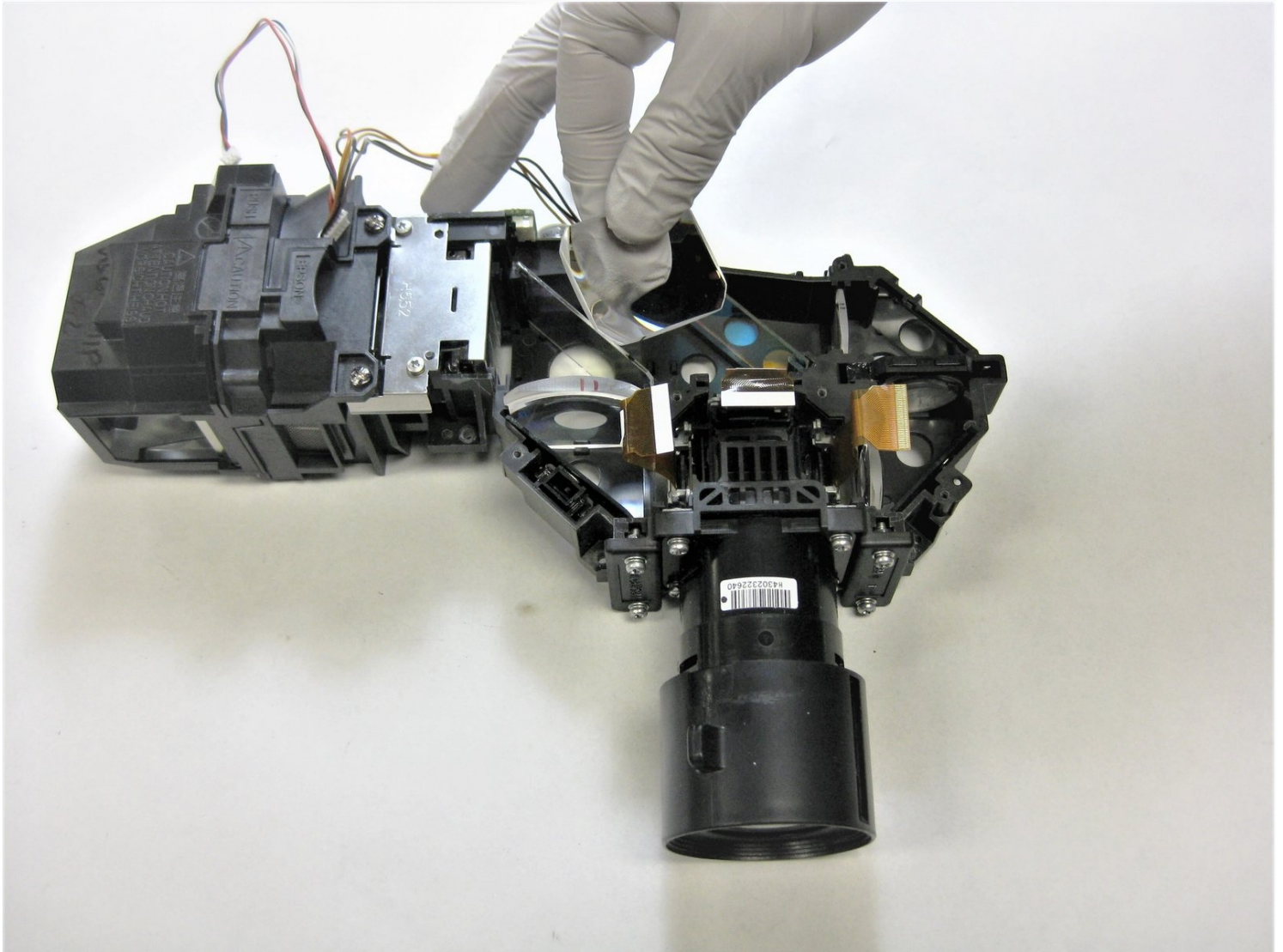




# Epson VS240 Color Prism Replacement

This guide demonstrates how to replace the...

Written By: Will Wyman



# INTRODUCTION

This guide demonstrates how to replace the color prisms in an Epson VS240 projector. The color prisms of the VS240 are made of glass, a potential hazard if shattered. The color prisms themselves will have to be replaced from another VS240 because the prisms are not sold individually. The color prisms are important to replace because if even a single one was damaged the image may not display as intended (i.e. incorrect colors or shapes depending on level of damage and where on the prisms the damage is located).

Power off and unplug the device before beginning.

---

## TOOLS:

Phillips #1 Screwdriver (1)

Phillips #2 Screwdriver (1)

Spudger (1)

Nitrile Gloves 100 Box (1)

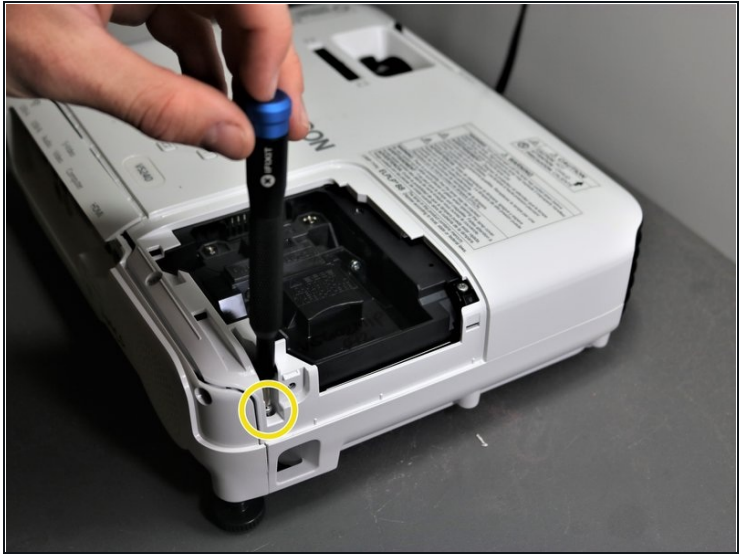
---

## Step 1 — Shell



- Using the Phillips #2 screwdriver, loosen the single captive screw on the left side of the projector.
  - ⓘ The captive screw will loosen, but it cannot be fully removed.
- Slide the panel off and remove it from the device.

## Step 2



- Use the Phillips #2 screwdriver to remove the three 5 mm screws.
- Using the same Phillips #2 screwdriver, remove the single 8 mm silver screw.

## Step 3



- Use a Phillips #1 screwdriver to remove the two 10 mm silver screws from the bottom of the device.



## Step 4



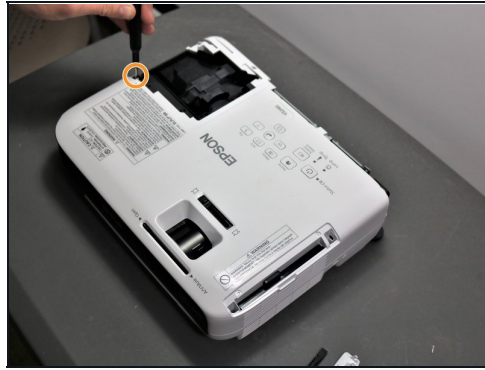
- Use a Phillips #1 screwdriver to remove the single 10 mm screw where the panel was removed in Step 1.
- Remove the white back plate from the device.

## Step 5



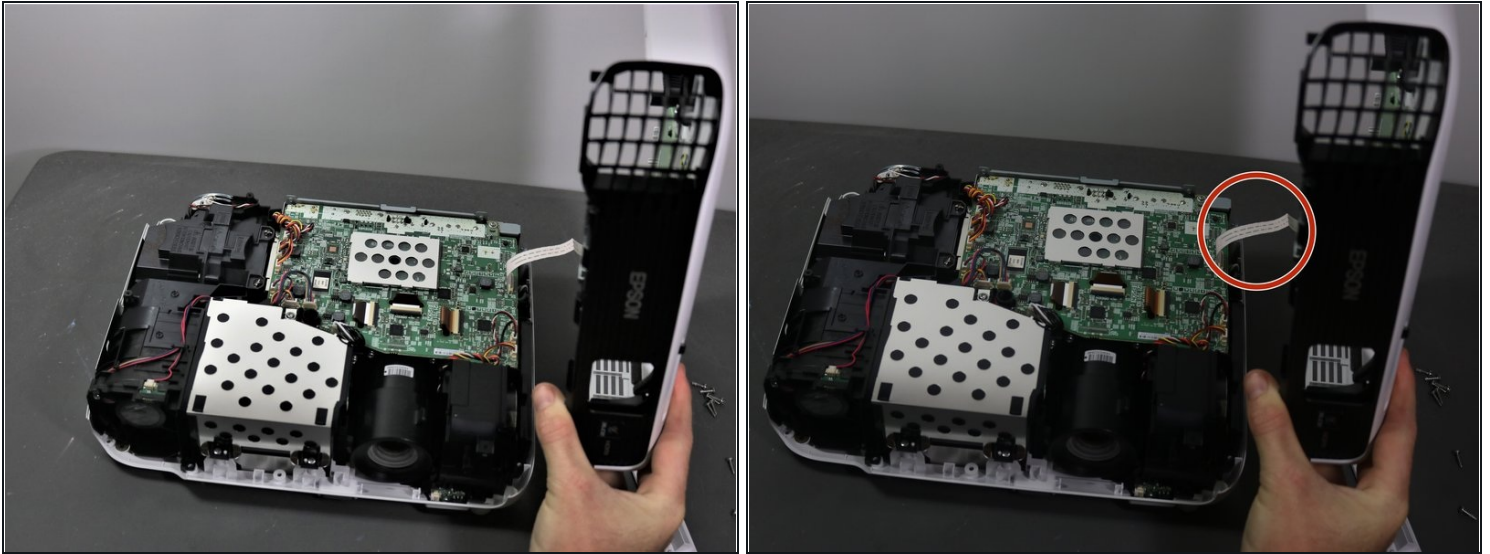
- Flip the projector over so that the underside (side with the feet) is facing you.
- Use a Phillips #1 screwdriver to remove five 10 mm screws on the underside of projector.
- Using the same Phillips #1 screwdriver, remove a single 10 mm screw in the center hole.
- ① You may need to use a screwdriver extender to reach the single screw.

## Step 6



- Use a Phillips #1 screwdriver to remove two 10 mm screws from the openings on each side of the air filter, on the topside of the projector.
  - ① You may need to use a screwdriver extender to reach the two screws.
- Using the same Phillips #1 screwdriver, remove the two 10 mm screws where the white panel was removed on the topside of the projector in Step 1.

## Step 7

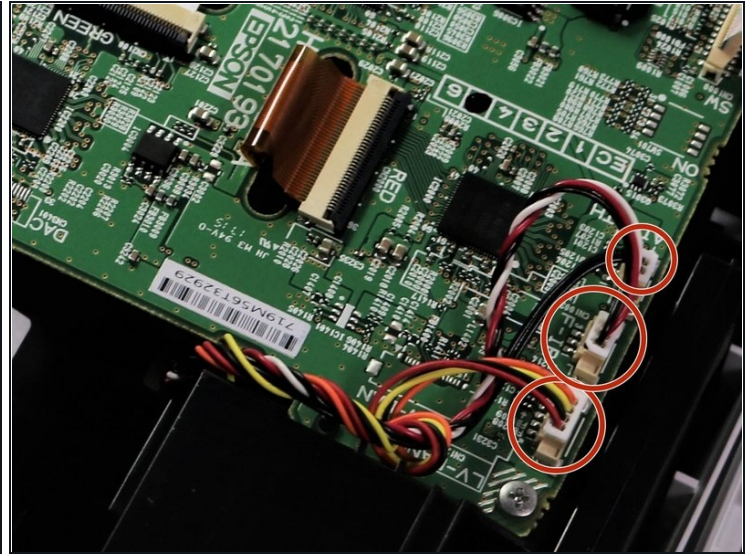
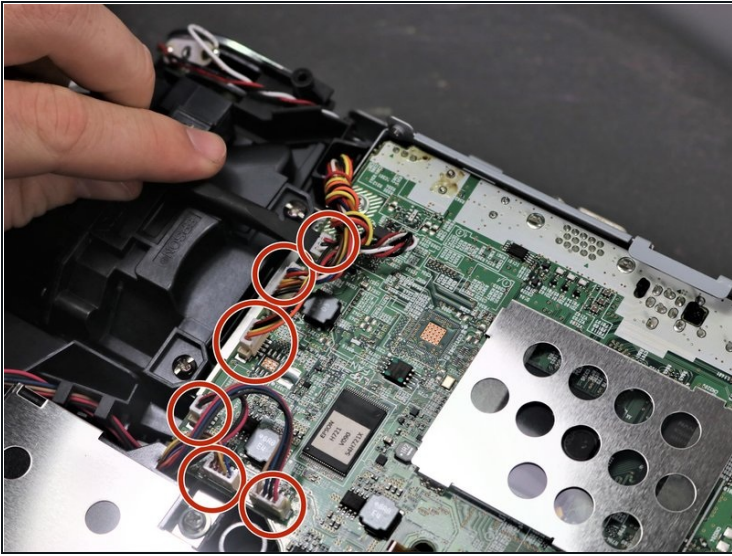


⚠ Be careful when removing the top cover of projector as there is a white ribbon cable connecting it to the motherboard.

- Gently lift top cover and place it on its top next to the projector so that the ribbon has no tension on it.
- Gently pull the brown tape connecting the cable to the motherboard and then remove the shell from the device.

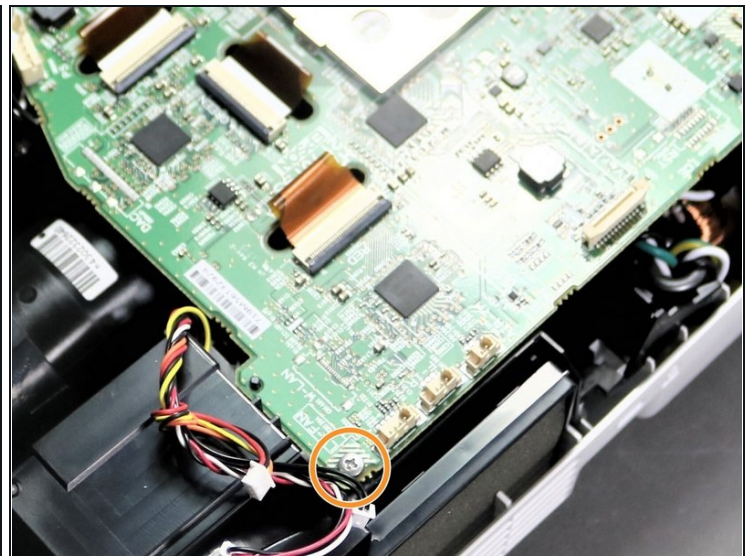
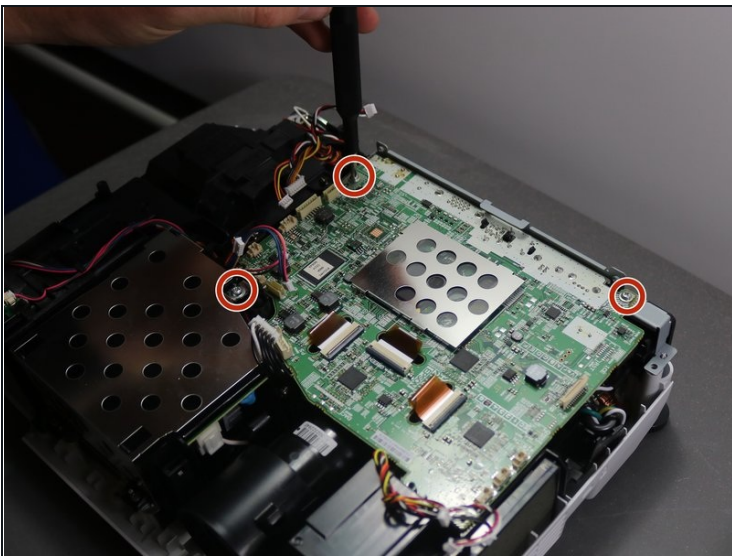


## Step 8 — Motherboard



- Using a spudger or a plastic opening tool, disconnect all of the wires connected to the motherboard.

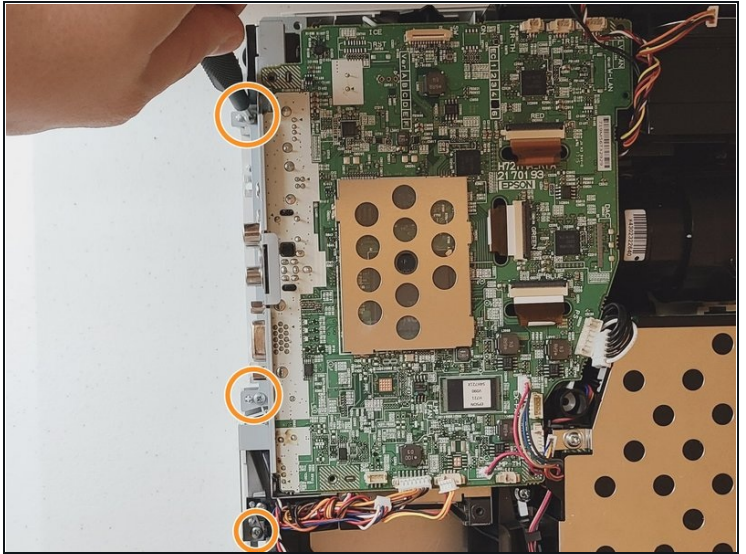
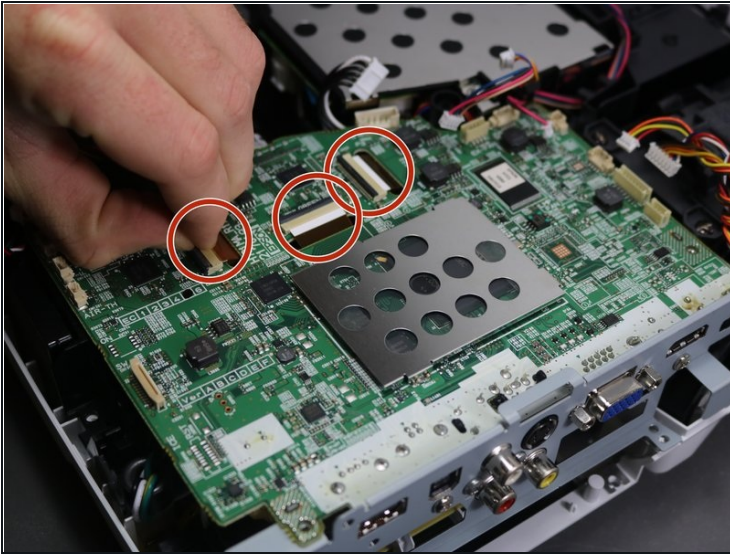
## Step 9



- Using the Phillips #1 screwdriver, remove three 6 mm screws.
- Using the same Phillips #1 screwdriver, remove a single 10 mm screw in bottom right corner of motherboard.

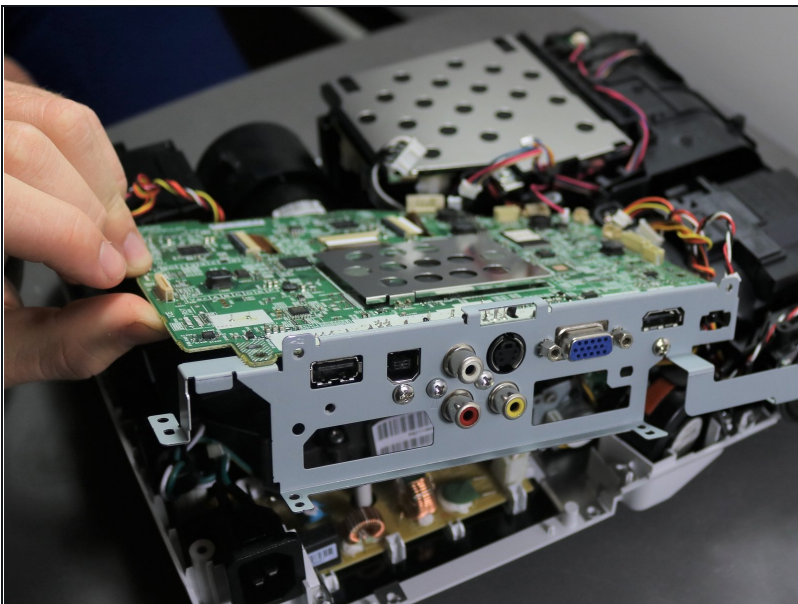


## Step 10



- Using a spudger or your fingernails, lift up the black locking tabs and disconnect the three ribbon cables from the motherboard.
  - ① For more information on Zero Insertion Force (ZIF) connectors, please visit [this guide](#).
- Using the Phillips #1 screwdriver, remove three 10 mm screws on the grey piece that is located on the side of the motherboard.

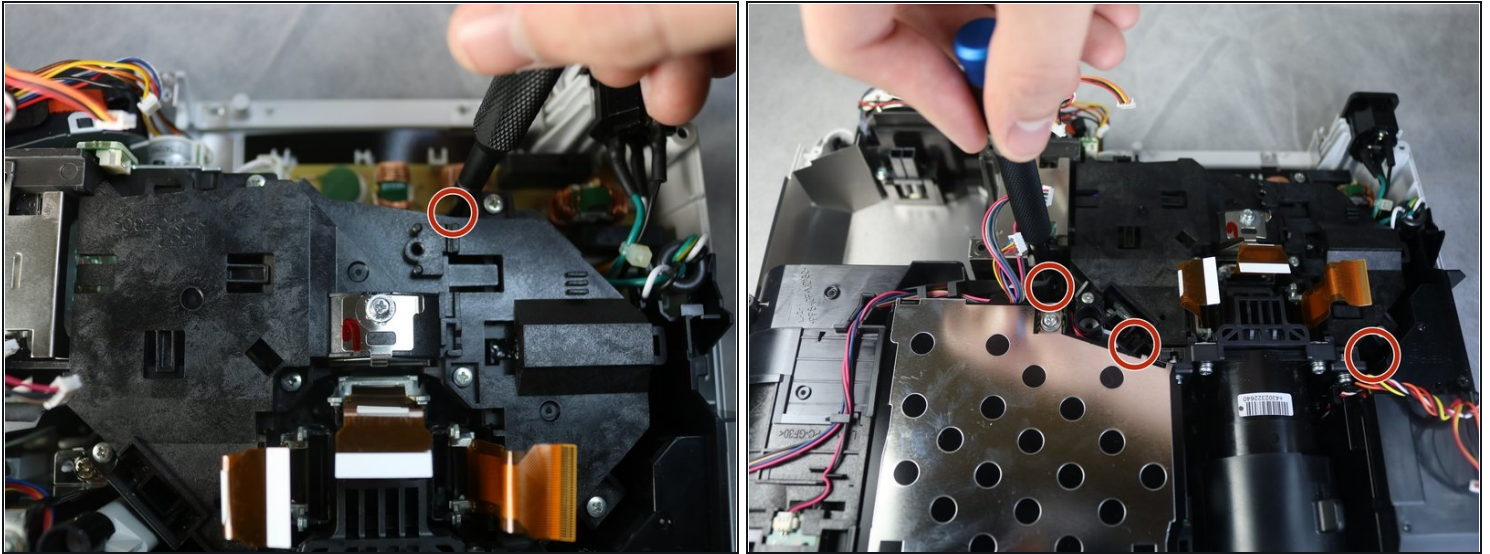
## Step 11



- Lift and remove the motherboard up and away from the device.

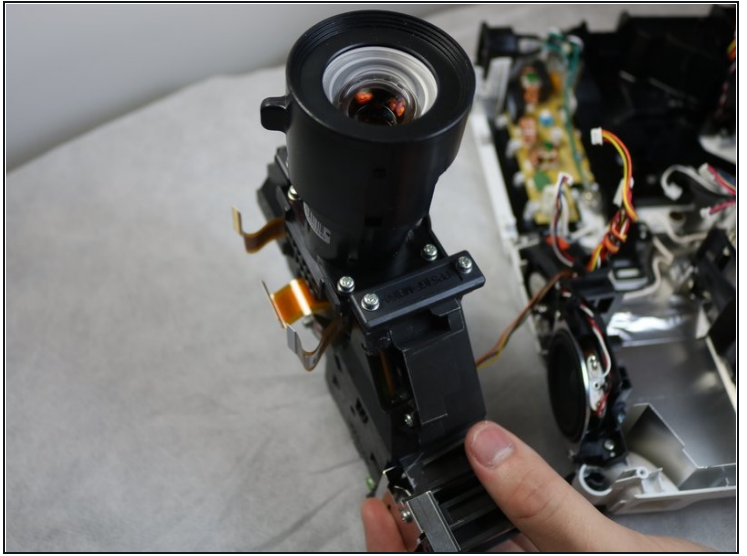
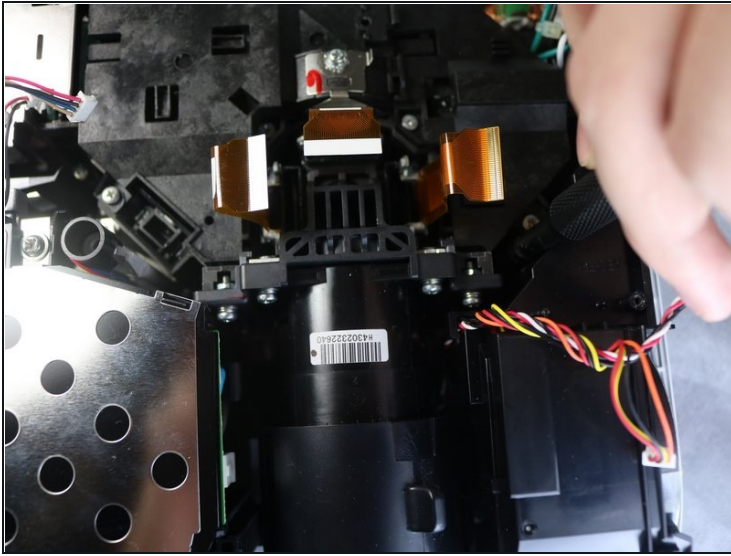


## Step 12 — Lens



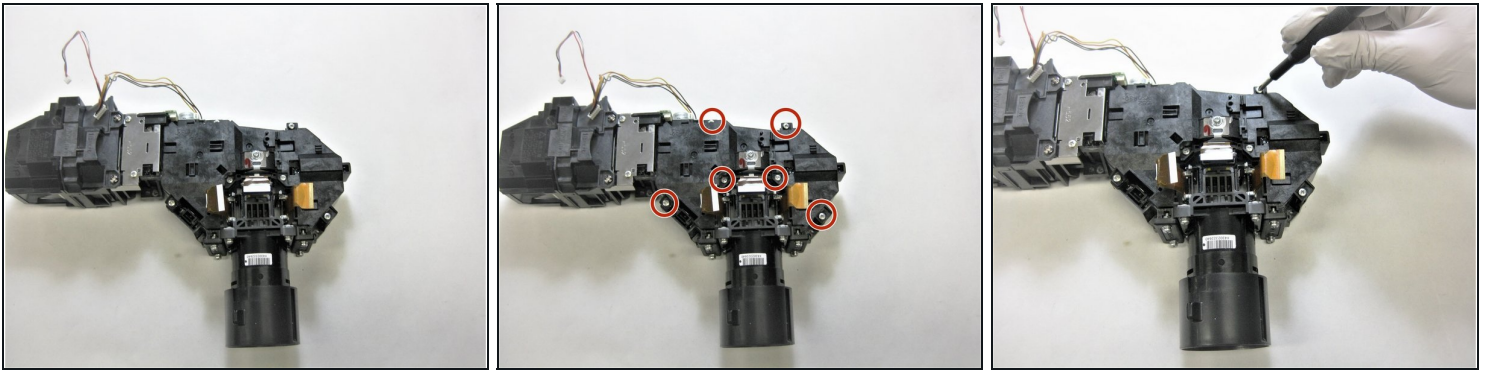
- Rotate the projector 180 degrees to match orientation in images.
- Using the Phillips #2 screwdriver, remove four inner 11 mm screws under the black box connected to the lens.
  - ① These screws are located deep into the projector and you may need a screwdriver extender to reach two of the four screws.

## Step 13



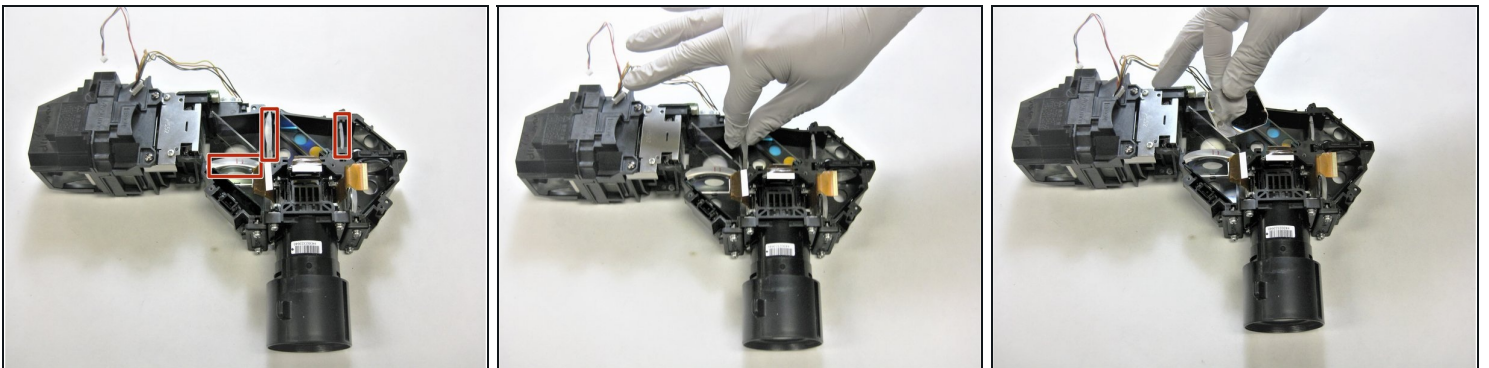
- Detach the wire above the lens using plastic pry bar.
    - ① These wires can also be removed by hand; however, a plastic opening tool may be used for more prying power.
  - Slowly lift the black assembly out of the device.
- ⚠ Be careful of the wire still connected. It does not need to be removed so lay the black assembly close to the projector so no tension is on the wire.

## Step 14 — Prisms



- Use a Phillips #1 screwdriver to detach the upper plastic cover by unscrewing the six 11 mm screws.
- Once the six screws are removed, lift the plastic cover and place it off to the side.
  - ⓘ When the screws are out, the covering is be very loose, so there is no particular way that it needs to be taken off.

## Step 15



⚠ Be careful with the prisms, as they may shatter and prove dangerous if not handled gently.

- Gently remove the three prisms.
  - ☑ These prisms are made of glass and are easy to smudge, and so it is recommended that you wear gloves when handling any new prism that is being inserted.

---

To reassemble your device, follow these instructions in reverse order.