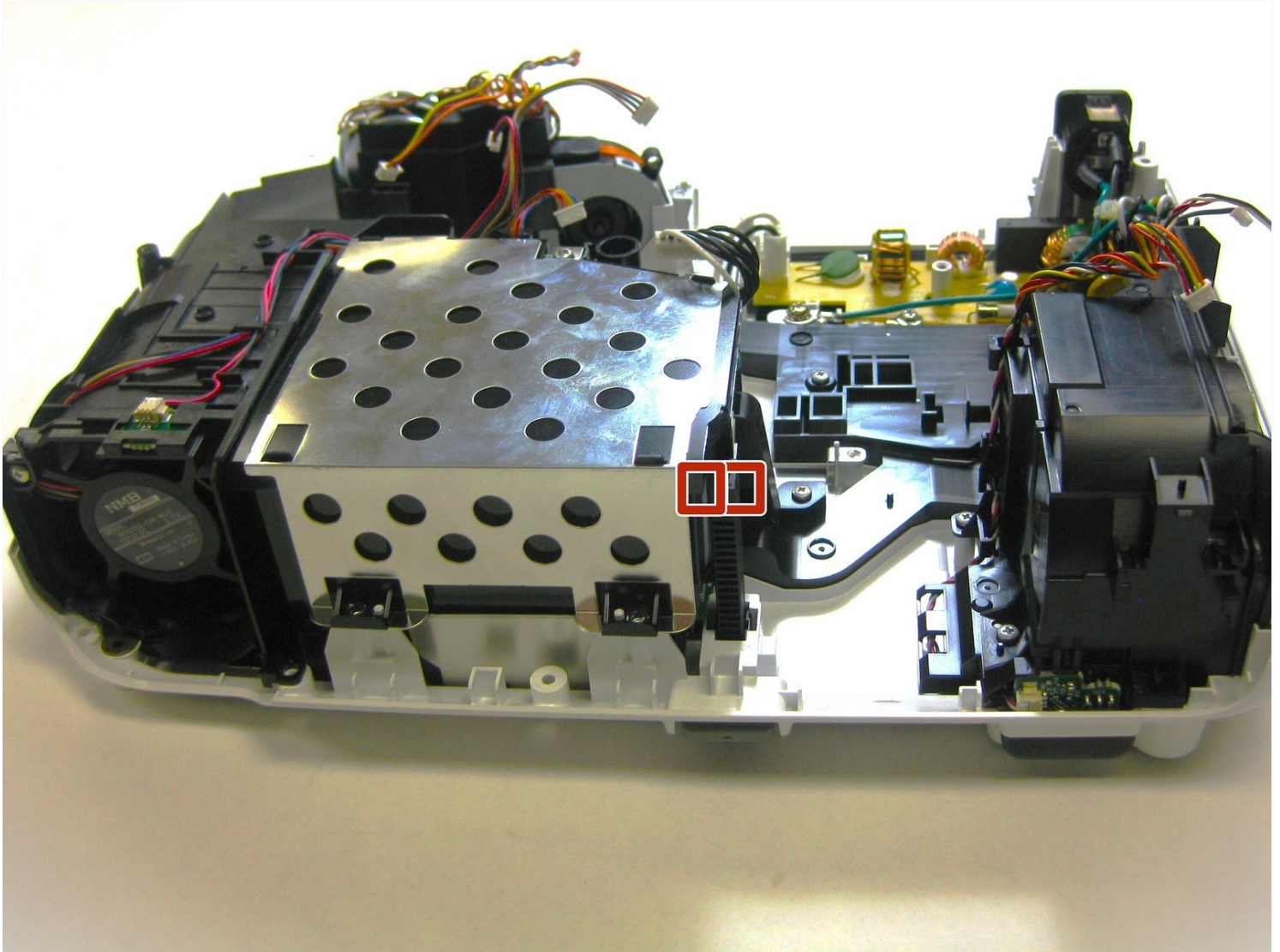




# Epson VS240 Stand Replacement

This guide demonstrates how to replace the...

Written By: Will Wyman



# INTRODUCTION

This guide demonstrates how to replace the stand in the Epson VS240 projector. While the stand is not necessary for the projector to function, if it is damaged it may prove difficult to properly set up the device to project at the exact right angle for it to properly hit the wall/screen at the angle needed to clearly display the image. The stand itself will have to be replaced from another VS240 because the stands are not sold individually. The stand would be important to replace because the stand allows the proper angle to be use to project the image properly onto a surface.

Power down and unplug the projector before beginning.

## TOOLS:

Phillips #1 Screwdriver (1)

Phillips #2 Screwdriver (1)

Spudger (1)

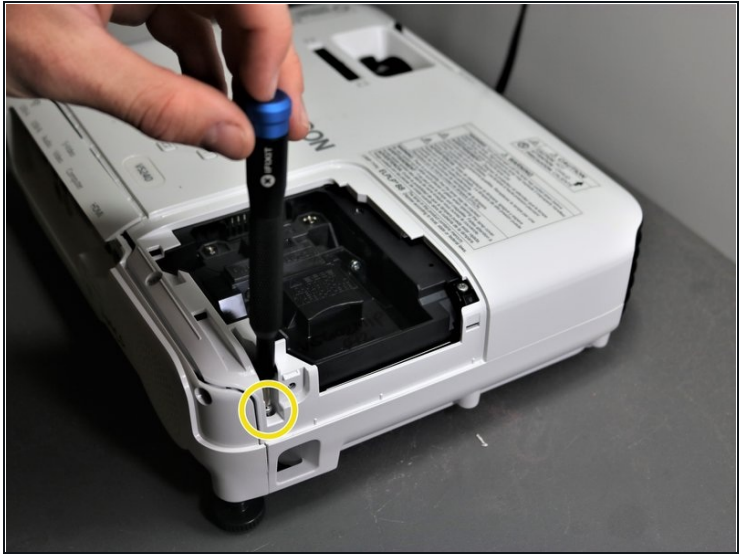
Tweezers (1)

## Step 1 — Shell



- Using the Phillips #2 screwdriver, loosen the single captive screw on the left side of the projector.
  - ⓘ The captive screw will loosen, but it cannot be fully removed.
- Slide the panel off and remove it from the device.

## Step 2



- Use the Phillips #2 screwdriver to remove the three 5 mm screws.
- Using the same Phillips #2 screwdriver, remove the single 8 mm silver screw.

## Step 3



- Use a Phillips #1 screwdriver to remove the two 10 mm silver screws from the bottom of the device.



## Step 4



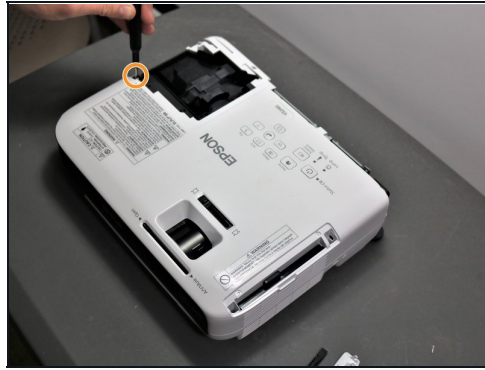
- Use a Phillips #1 screwdriver to remove the single 10 mm screw where the panel was removed in Step 1.
- Remove the white back plate from the device.

## Step 5



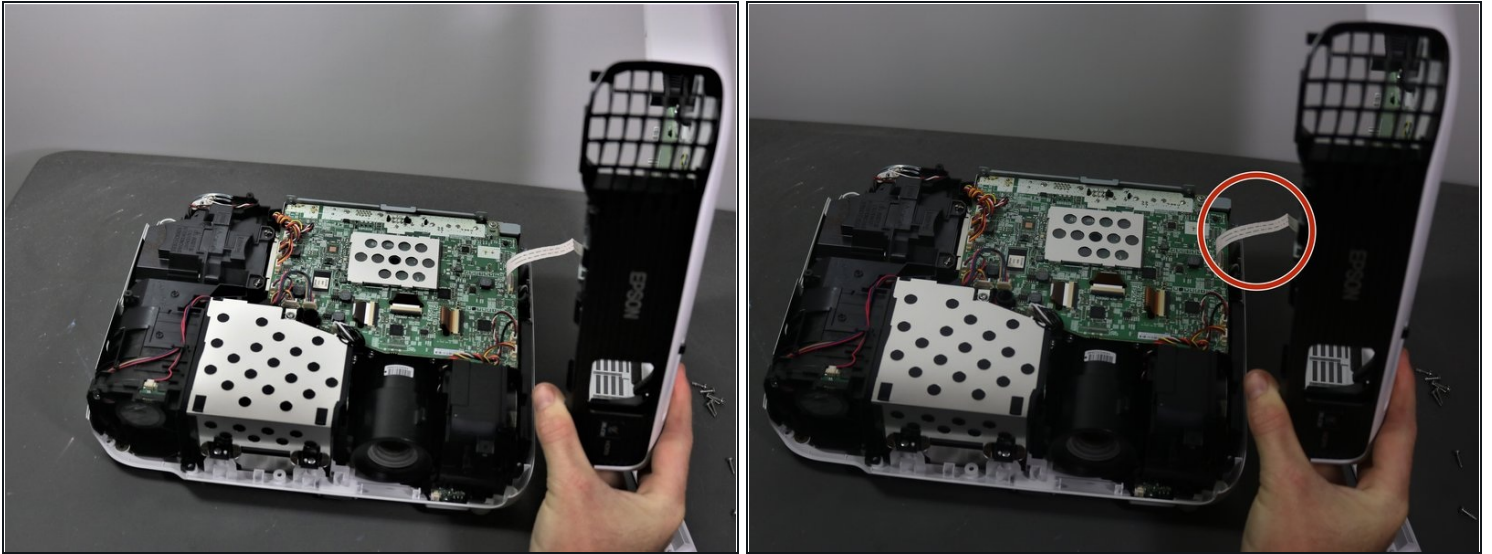
- Flip the projector over so that the underside (side with the feet) is facing you.
- Use a Phillips #1 screwdriver to remove five 10 mm screws on the underside of projector.
- Using the same Phillips #1 screwdriver, remove a single 10 mm screw in the center hole.
- ① You may need to use a screwdriver extender to reach the single screw.

## Step 6



- Use a Phillips #1 screwdriver to remove two 10 mm screws from the openings on each side of the air filter, on the topside of the projector.
  - ⓘ You may need to use a screwdriver extender to reach the two screws.
- Using the same Phillips #1 screwdriver, remove the two 10 mm screws where the white panel was removed on the topside of the projector in Step 1.

## Step 7

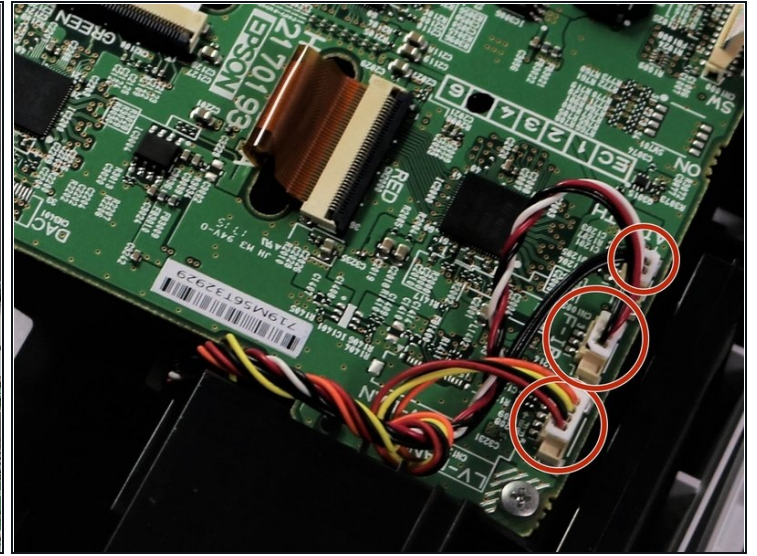
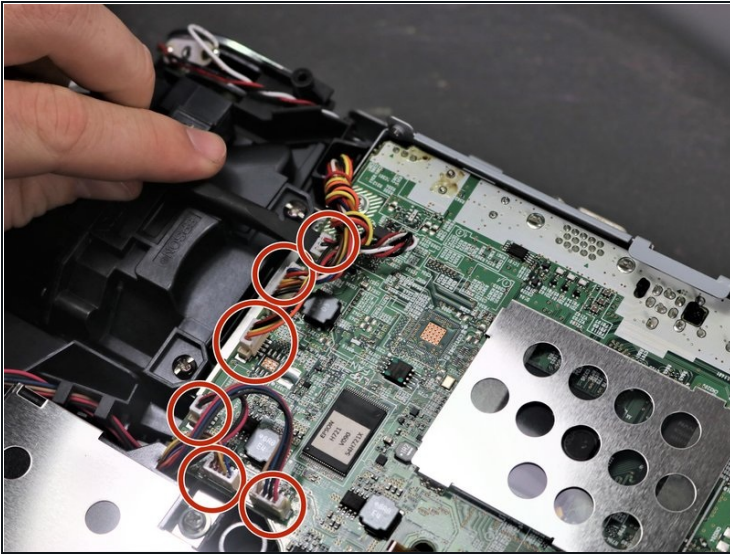


**⚠ Be careful when removing the top cover of projector as there is a white ribbon cable connecting it to the motherboard.**

- Gently lift top cover and place it on its top next to the projector so that the ribbon has no tension on it.
- Gently pull the brown tape connecting the cable to the motherboard and then remove the shell from the device.

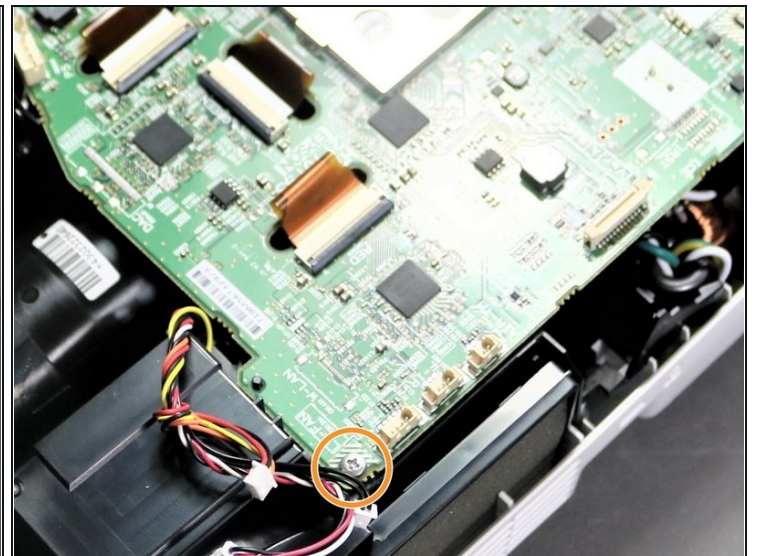
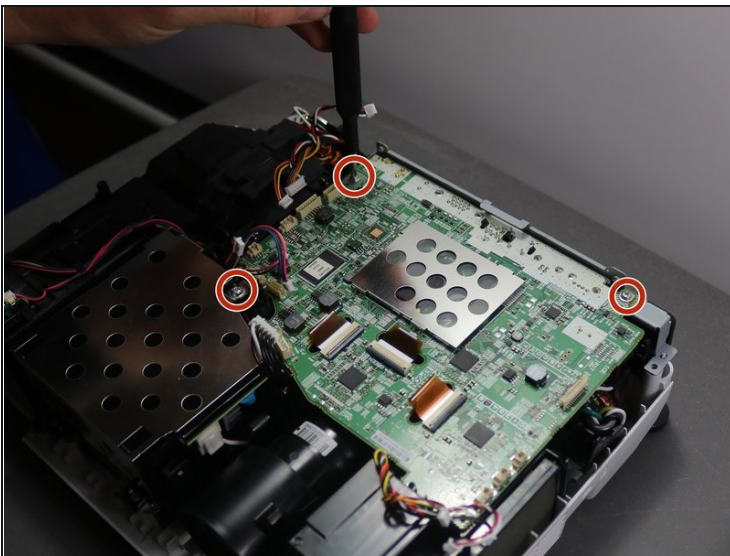


## Step 8 — Motherboard



- Using a spudger or a plastic opening tool, disconnect all of the wires connected to the motherboard.

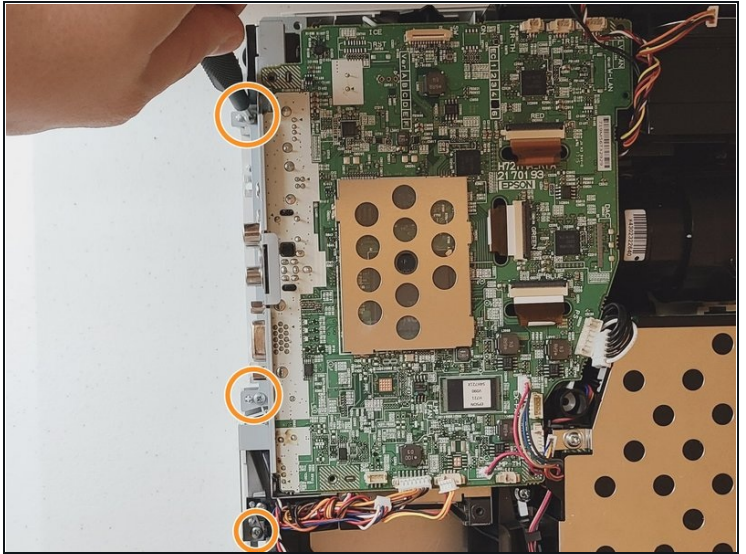
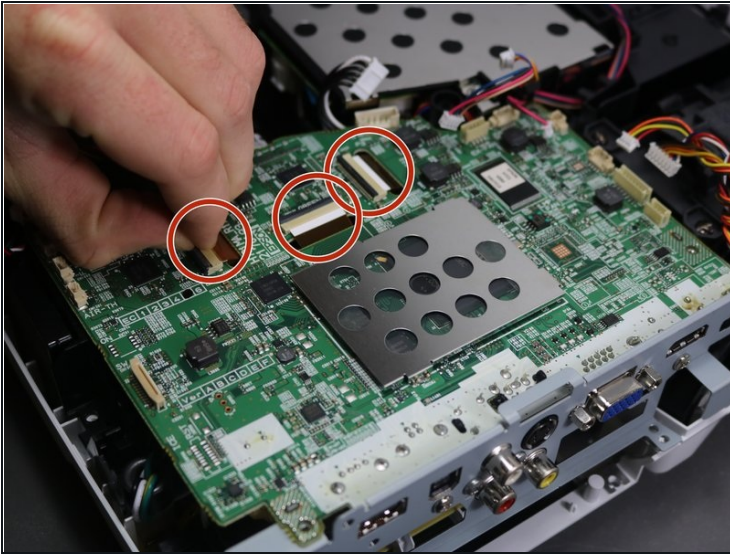
## Step 9



- Using the Phillips #1 screwdriver, remove three 6 mm screws.
- Using the same Phillips #1 screwdriver, remove a single 10 mm screw in bottom right corner of motherboard.

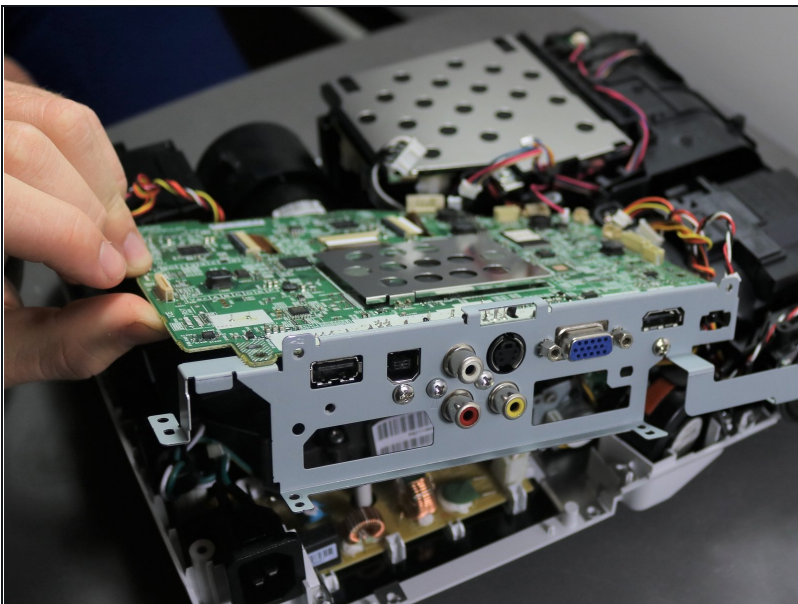


## Step 10



- Using a spudger or your fingernails, lift up the black locking tabs and disconnect the three ribbon cables from the motherboard.
  - ① For more information on Zero Insertion Force (ZIF) connectors, please visit [this guide](#).
- Using the Phillips #1 screwdriver, remove three 10 mm screws on the grey piece that is located on the side of the motherboard.

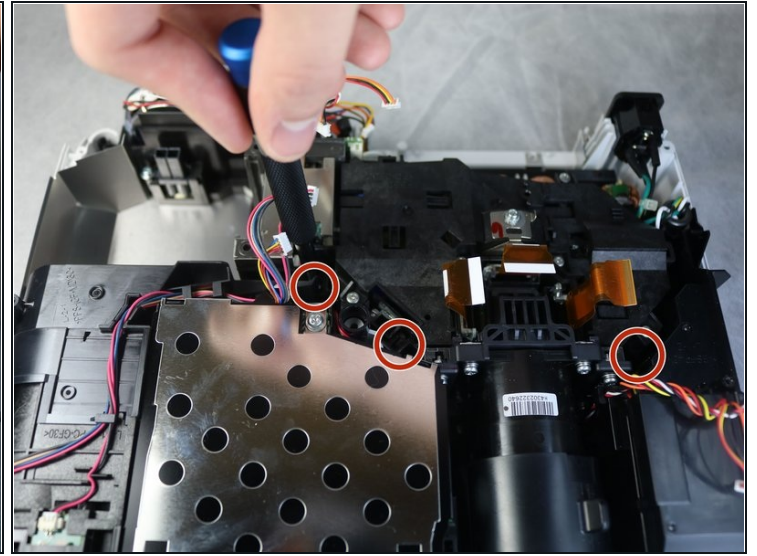
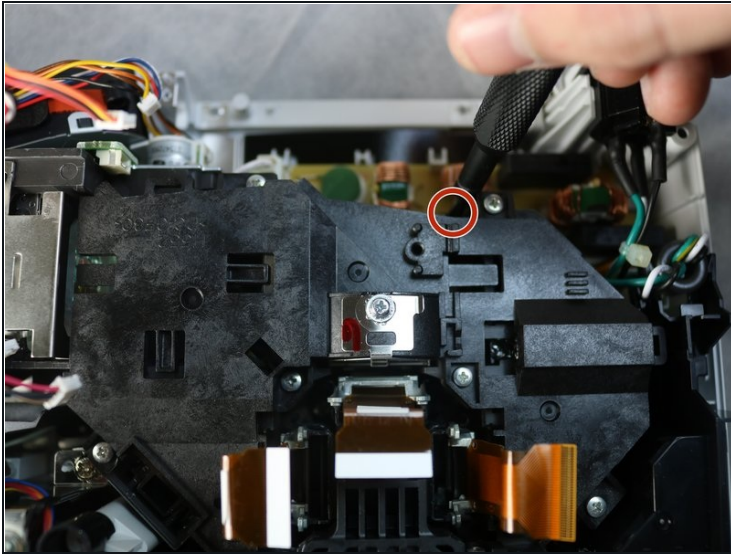
## Step 11



- Lift and remove the motherboard up and away from the device.

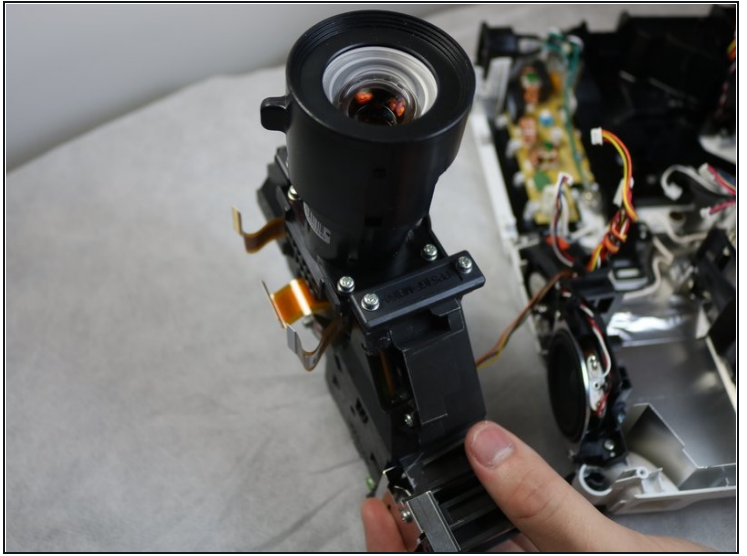
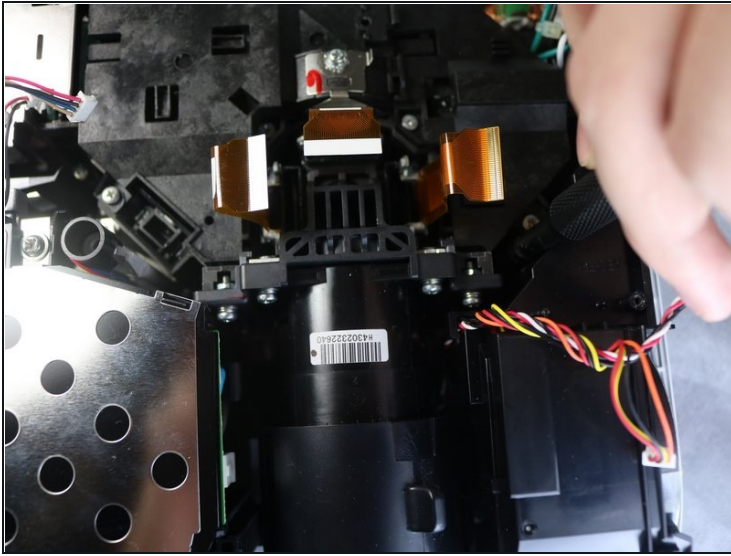


## Step 12 — Lens



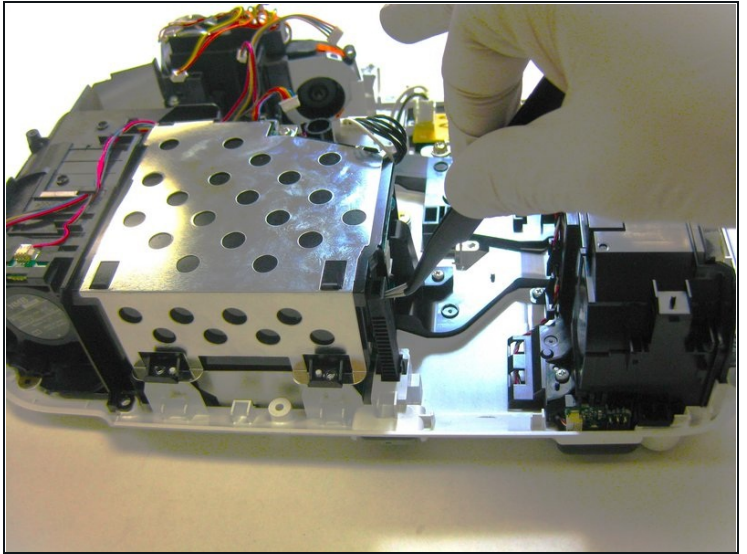
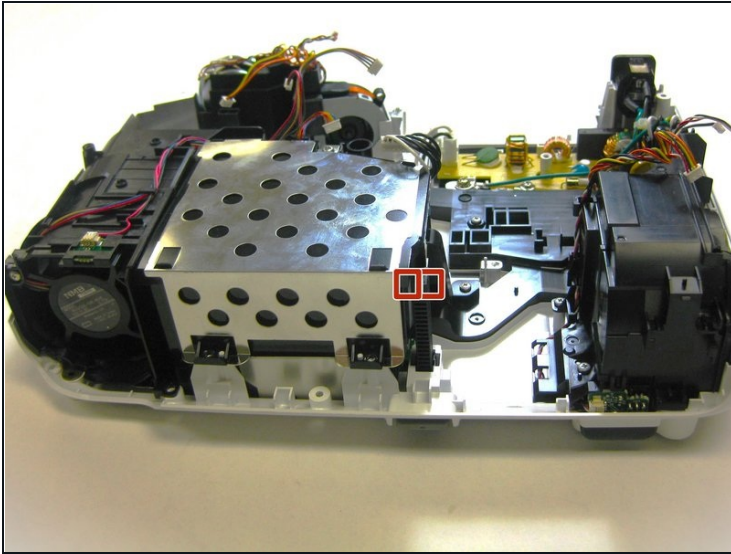
- Rotate the projector 180 degrees to match orientation in images.
- Using the Phillips #2 screwdriver, remove four inner 11 mm screws under the black box connected to the lens.
  - ① These screws are located deep into the projector and you may need a screwdriver extender to reach two of the four screws.

## Step 13



- Detach the wire above the lens using plastic pry bar.
    - ① These wires can also be removed by hand; however, a plastic opening tool may be used for more prying power.
  - Slowly lift the black assembly out of the device.
- ⚠ Be careful of the wire still connected. It does not need to be removed so lay the black assembly close to the projector so no tension is on the wire.

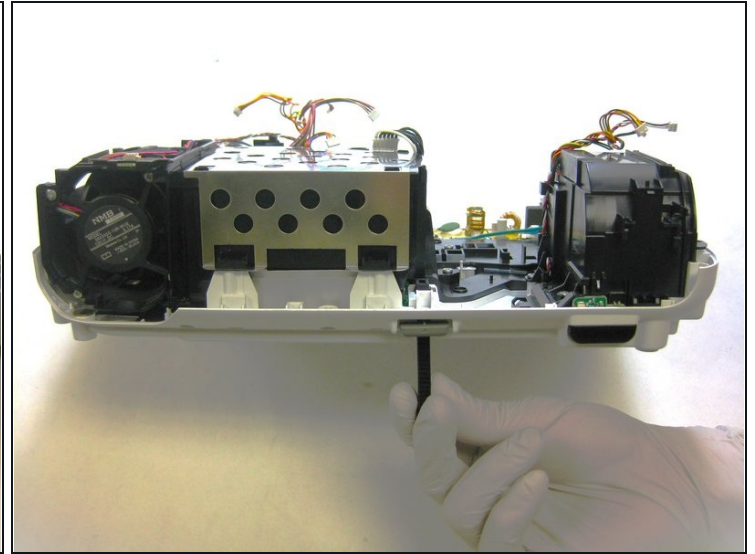
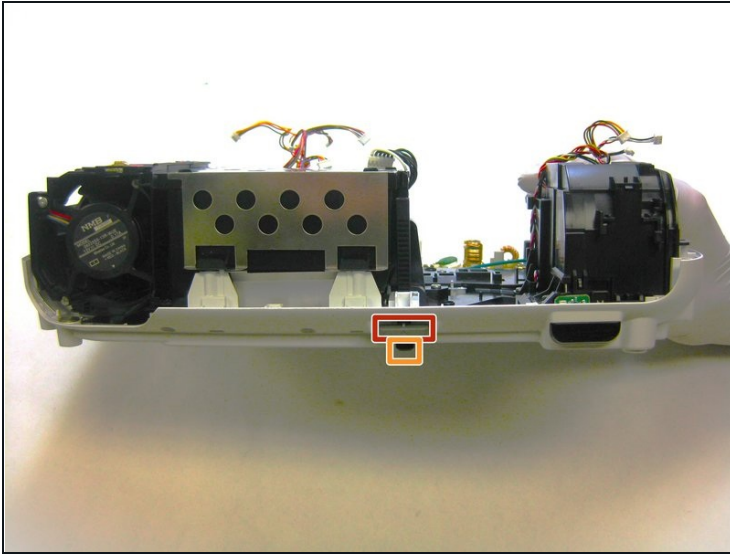
## Step 14 — Stand



- Using hook nose tweezers, break off the two large prongs that are located at the left and right of the stand at the very top.
  - ① This can be done by bending them out and snapping them off, pushing them in and out of the way, or a combination of the two. Additionally, if there is no intention to reuse the stand for any other purpose, the entire upper half could be snapped off.



## Step 15



- Gently raise the front of the projector and push the tab that adjusts the stand upwards. This shall result in the stand extending out of the base of the projector.
  - If the stand does not entirely slide out of the base, grab the part of the stand that has been exposed and pull it until you have removed the entire piece from the base.
- ① Keep pushing the tab upwards as you pull the stand out to ensure it is removed as smoothly as possible.
-