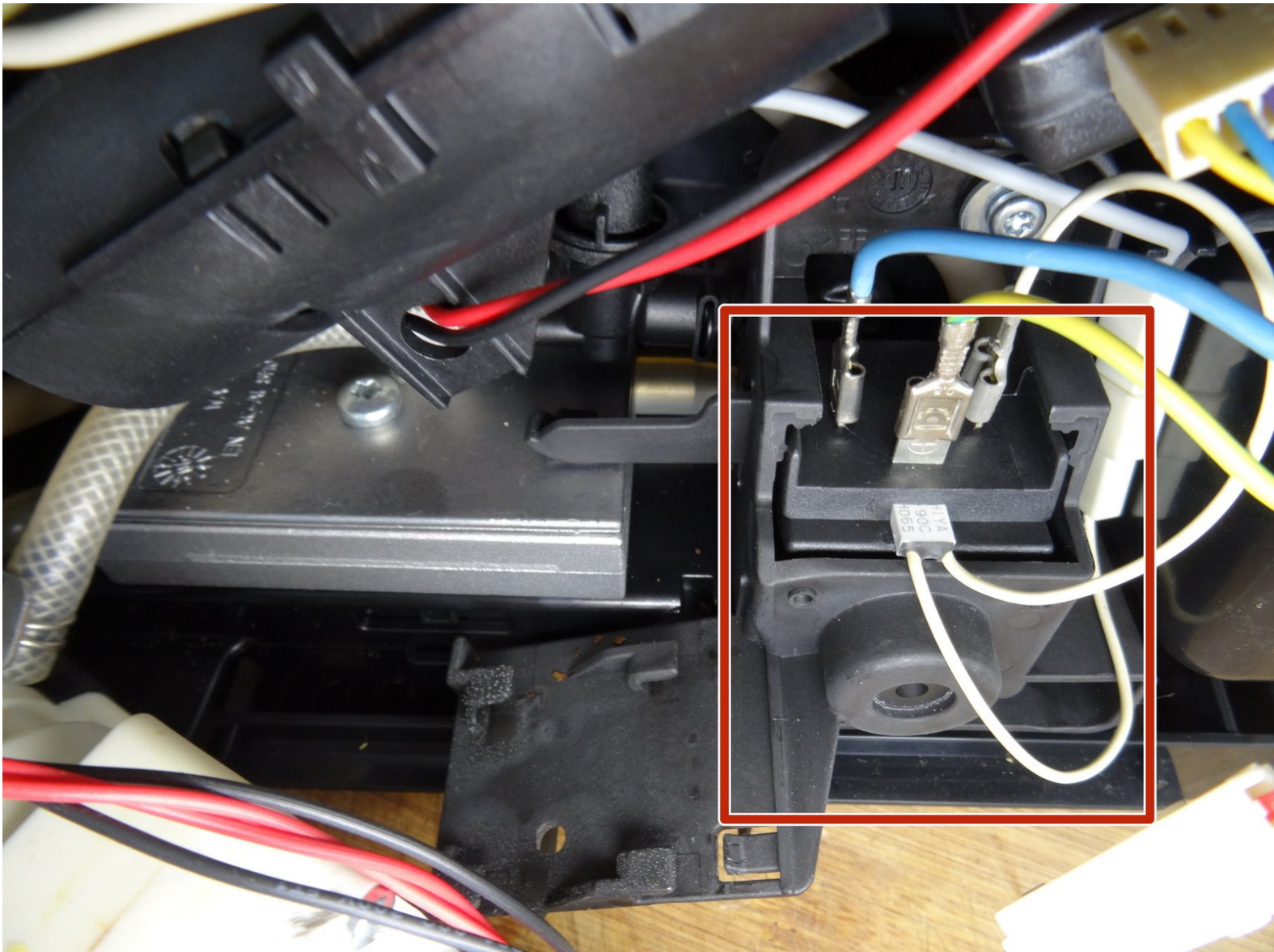




Jura Capresso IMPRESSA J5 Magnetic Drainage Valve

This valve opens the drain valve at the right...

Written By: VauWeh



INTRODUCTION

This valve opens the drain valve at the right moment. Here it is shown how it can be removed, either to replace it or to access other components (heat exchanger, outlet valve, flowmeter).

TOOLS:

- [Oval Drive Bit](#) (1)
 - [T15 Torx Screwdriver](#) (1)
-

Step 1 — Jura Capresso IMPRESSA J5 opening procedure



 **Unplug the power cord!**

- Remove the water tank and the drip tray. Remove all coffee beans from the storage container.

Step 2



- Flip open the lid of the bean compartment.
- Unscrew the two slotted screws inside the bean compartment. The screws have a rubber washer and will not come out completely.
- Remove the bean compartment.

Step 3



- The top cover is fastened with oval head screws. Unscrew them.
- ⓘ These screws have an oval head that makes them look like rivets (picture 2). You need to use a special bit - [also available at iFixit](#) - for their removal. [Here a DIY guide](#). If the right bit is not available, it could be done with a pair of needle nose pliers. Jura wants to keep us out of our own machines!!!

Step 4



- Also remove the two oval head screws underneath the ground coffee compartment lid.

Step 5



- Now you can pry up the top cover all around.
- Remove the top cover. This often requires a little force.
- ☒ Use plastic tools to avoid scratching your device.

Step 6



- Turn the device with the back facing you.
- Turn the Jura label a few degrees counterclockwise. If it's hard to do, use a small suction cup.
- Remove the Jura label.

Step 7



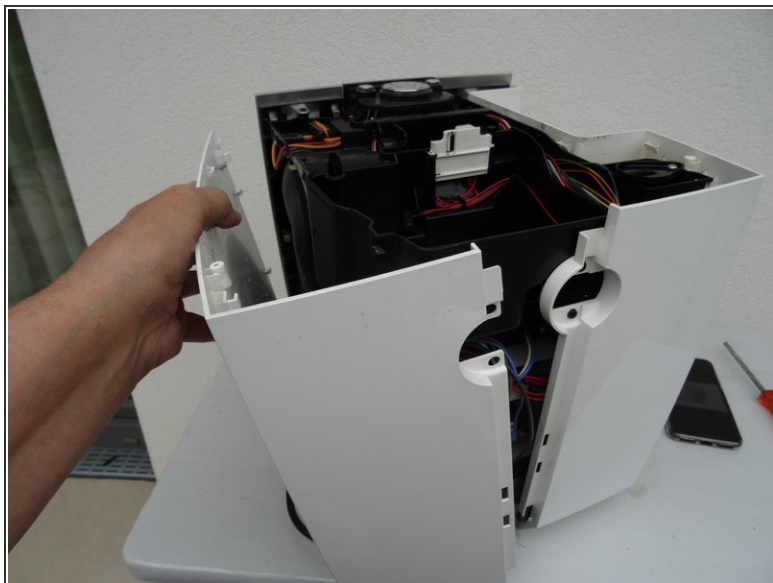
- Underneath the label you will find two Torx T15 screws. Remove them.
- Carefully pull the top of the chrome cover slightly outwards, then push it down and put it aside.

Step 8



- Remove the Torx T15 screw on the side panel with the water tank.

Step 9



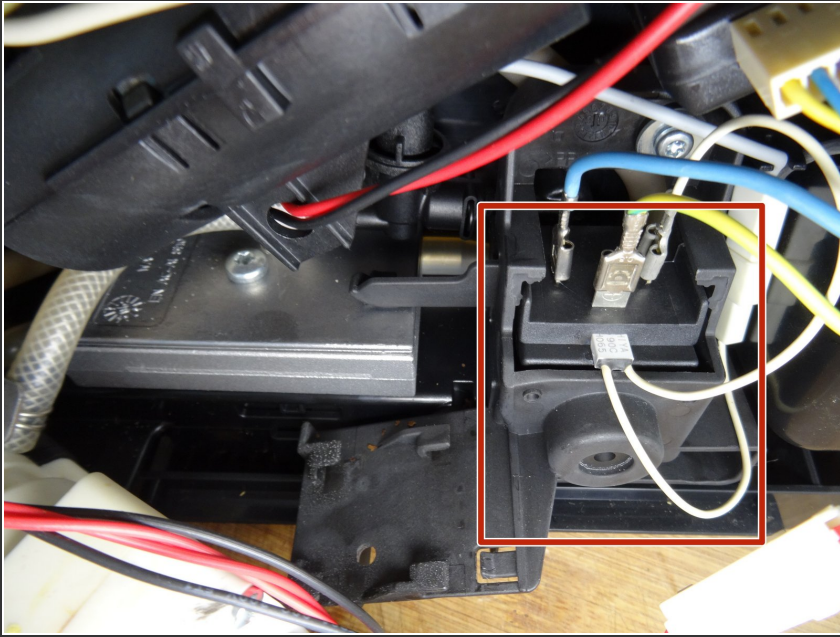
- Pull the right side panel slightly towards the back.
- Remove the side panel.

Step 10



- Pull the left side panel slightly towards the back and remove it.

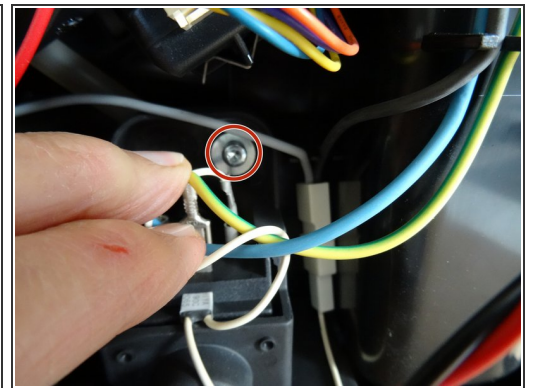
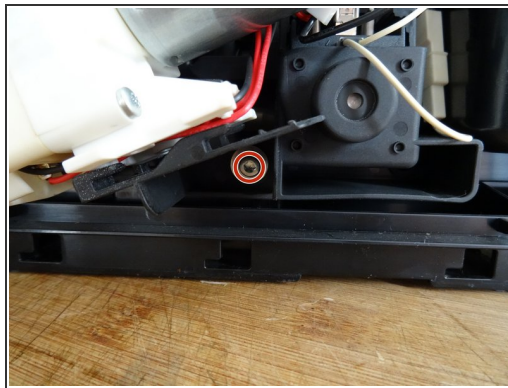
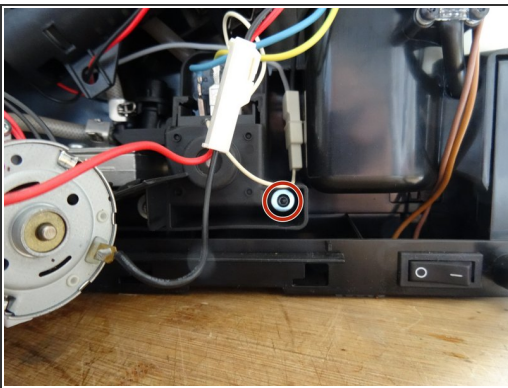
Step 11 — Jura J5 Magnetic Drainage Valve



- The motor for the drainage valve is located in the lower side of the unit near the center. It is fastened with three screws and connected with several flat plugs. In the picture, the ceramic valve has already been pushed off.

ⓘ Note: models from J6 onwards have a motor installed and not a magnet.

Step 12



- Unscrew the three Torx T15 screws on the motor for the drain valve. Pay attention to the washers underneath.
- Carefully pull out the motor.
- If you want to replace it, you still have to disconnect the flat connectors. Note where the connectors are connected.

Work through the steps in reverse order to reassemble your device.

This document was generated on 2023-01-31 02:33:16 PM (MST).

