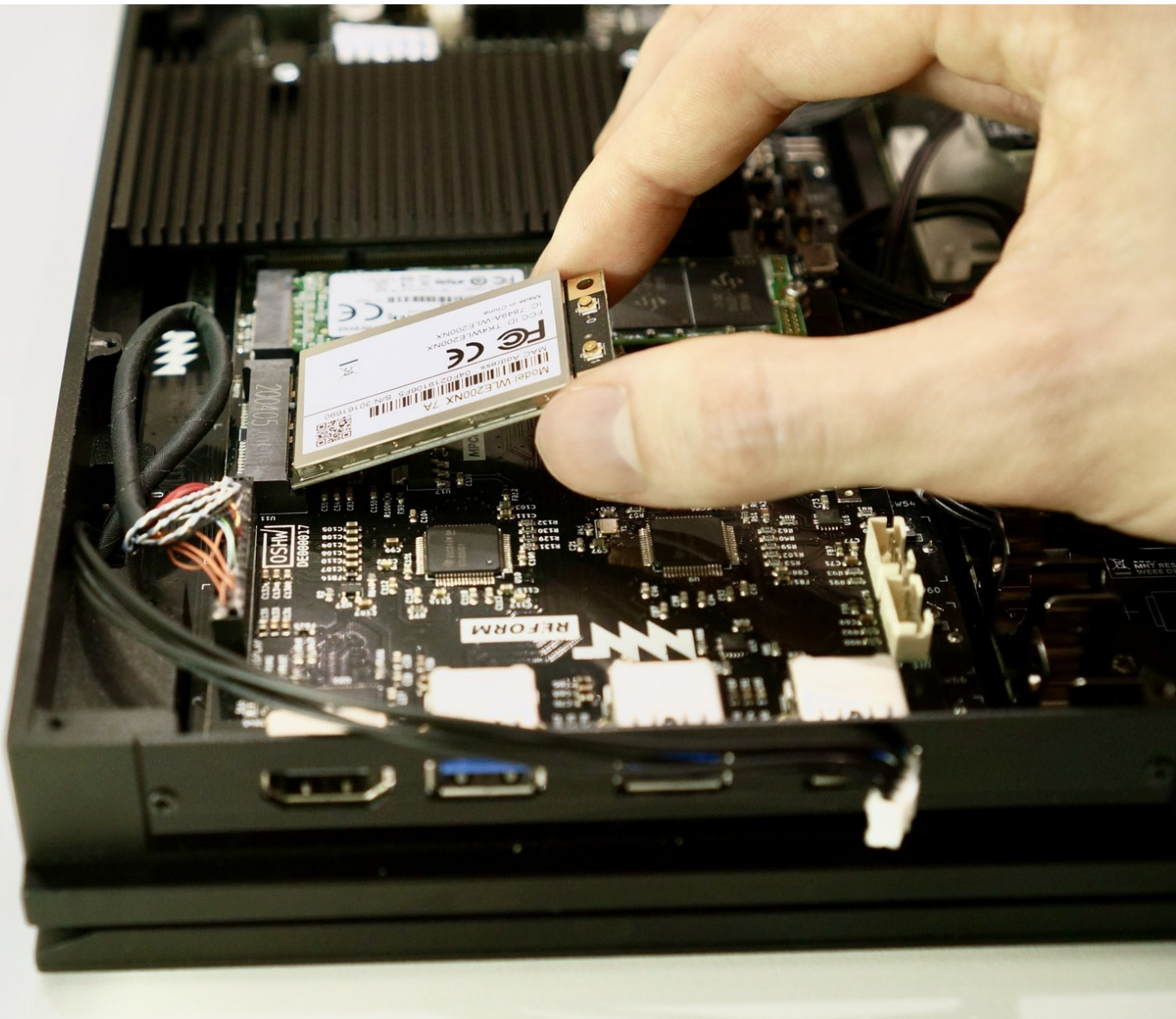




MNT Reform WiFi Card Replacement

Use this guide to restore wireless connectivity to your MNT Reform by replacing the WiFi card.

Written By: Neelfyn



INTRODUCTION

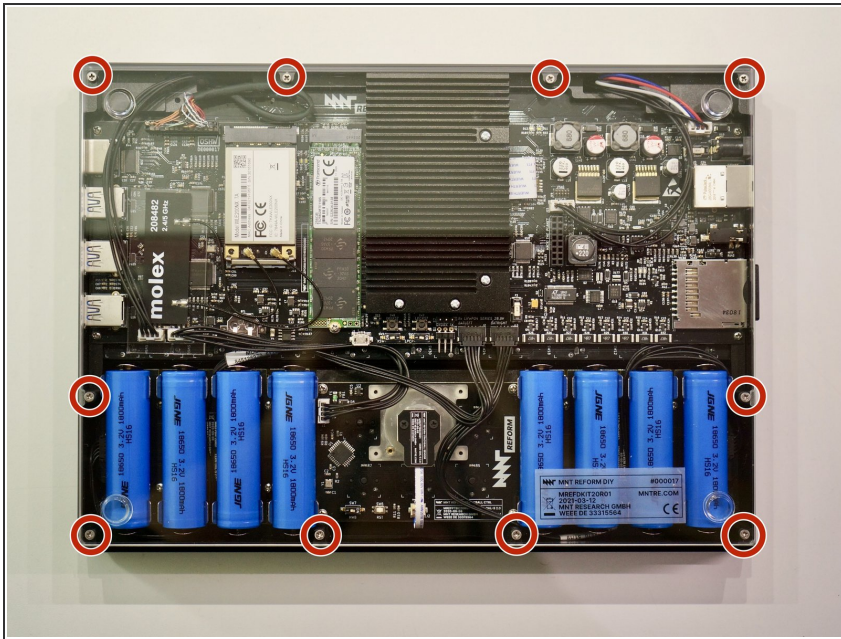
Use this guide to restore wireless connectivity to your MNT Reform by replacing the WiFi card. Reform uses a standard mPCIe socket for WiFi cards.



TOOLS:

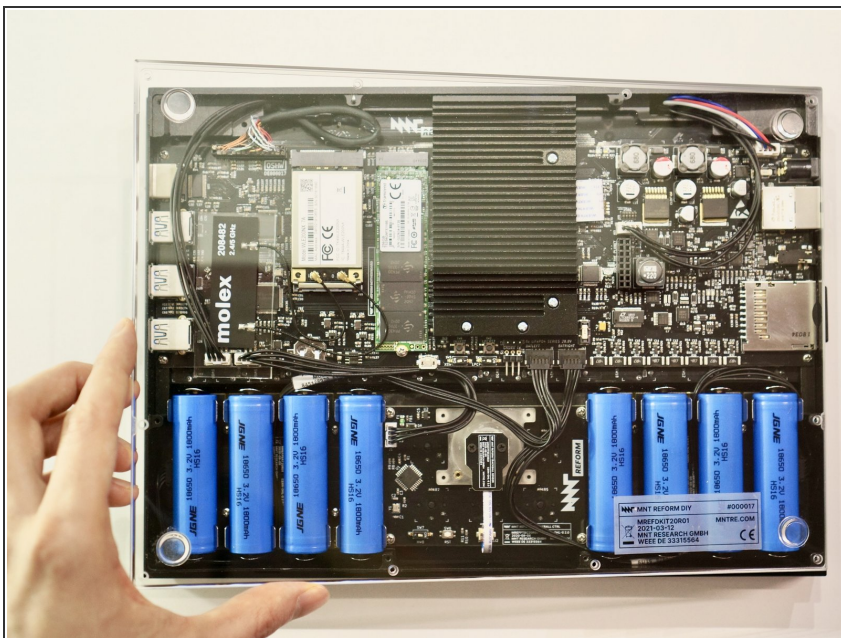
- [Phillips #0 Screwdriver](#) (1)
 - [Spudger](#) (1)
-

Step 1 — Remove Bottom Plate Screws



- Remove the following screws securing the transparent acrylic bottom plate to the main box:
 - Ten M2×6mm silver Phillips screws

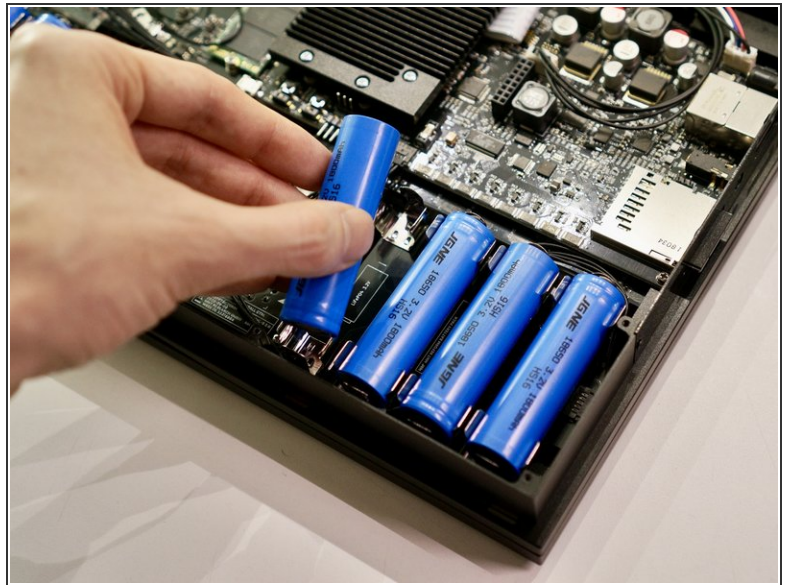
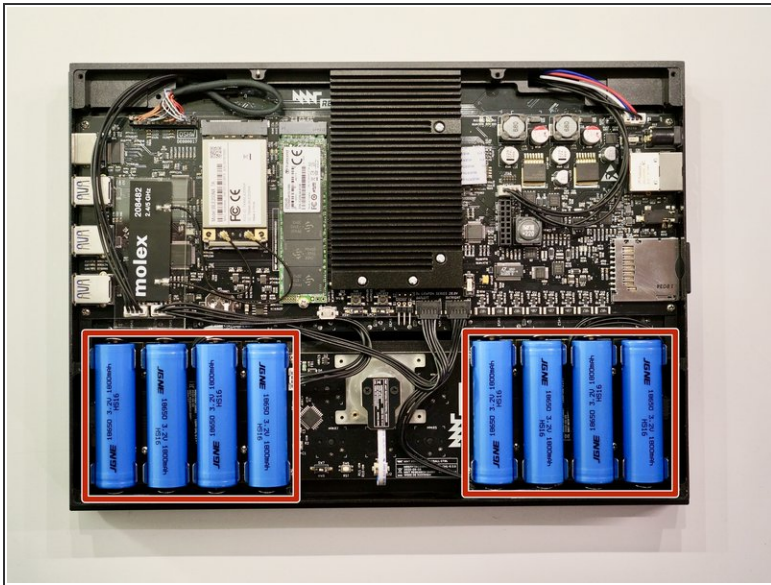
Step 2 — Remove Bottom Plate



- Lift the bottom plate and set it aside.

⚠ Before servicing anything on the inside, make sure to remove all battery cells.

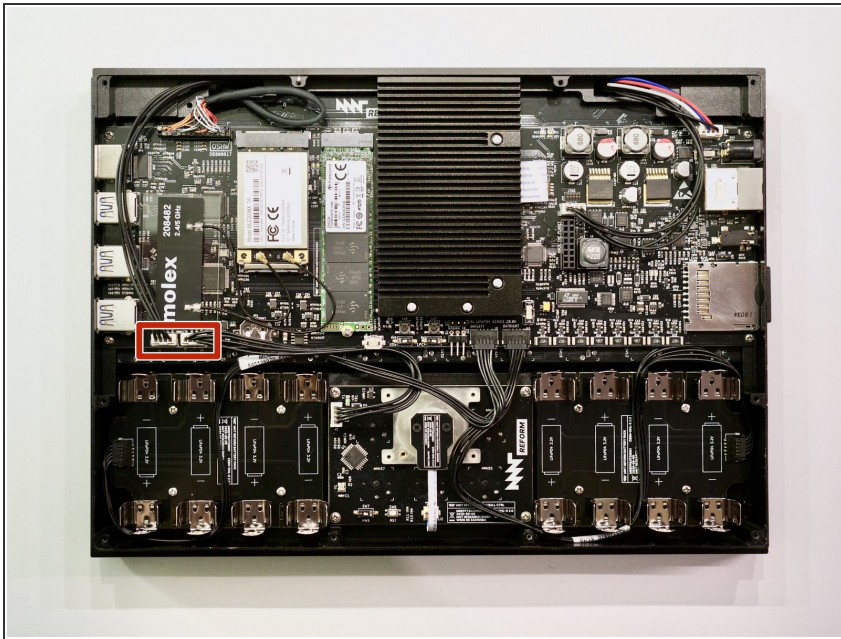
Step 3 — Remove Battery Cells



- Pull out the eight battery cells one by one, and set them aside safely.

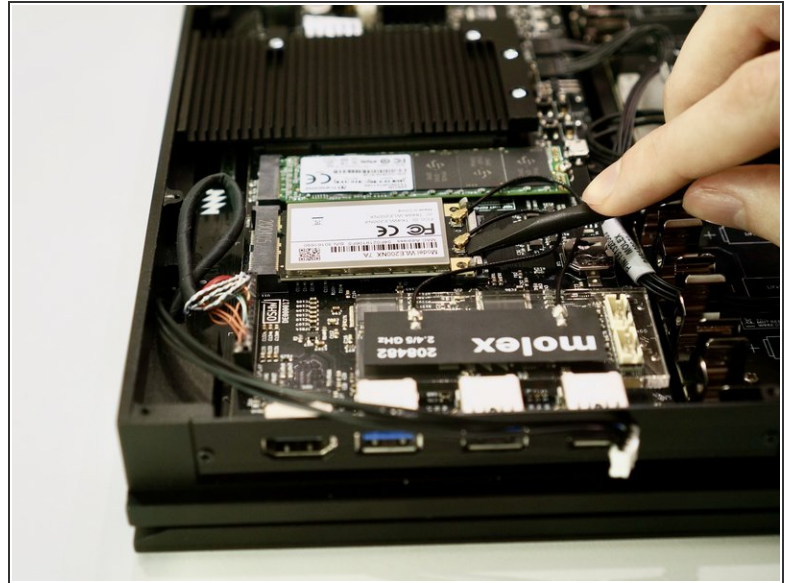
- ⚠ Do not use a metal tool to remove the batteries. You may accidentally short-circuit the metal pins of the battery holders.
- ⚠ When replacing the batteries, **pay attention to the polarity!** Inserting a cell the wrong way in will damage your device.
- ⓘ The circuit board indicates the + and - orientation for each cell.

Step 4 — Unplug the Keyboard and Trackball Cables



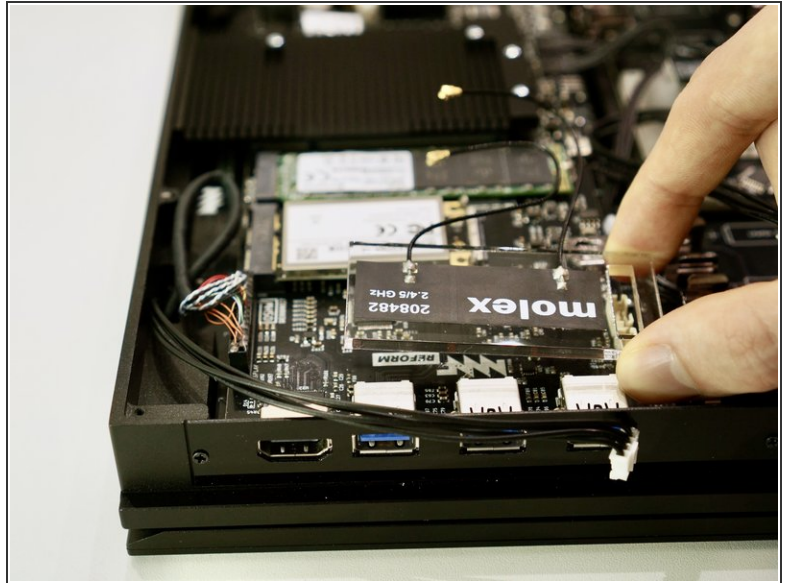
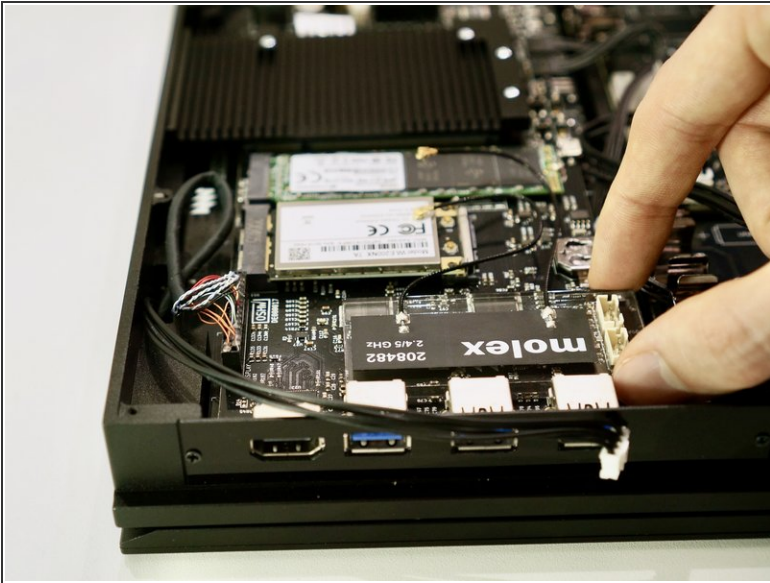
- Unplug the UI1 (keyboard) and UI2 (trackball or trackpad) cables from the motherboard.
- ⚠ To avoid damaging the cables, pull on the connector, not the wires.

Step 5 — Disconnect Antenna Cables



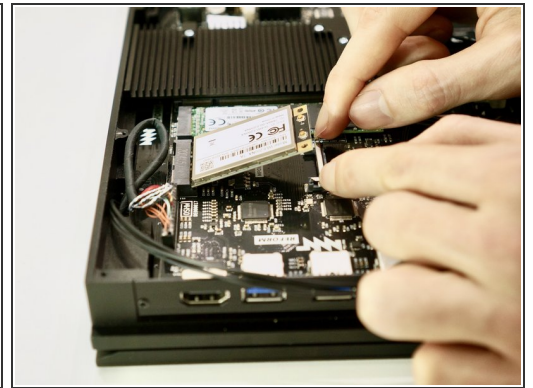
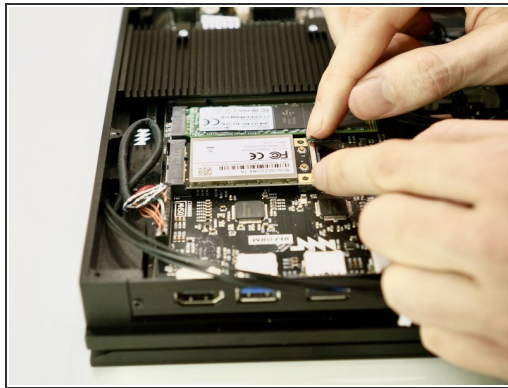
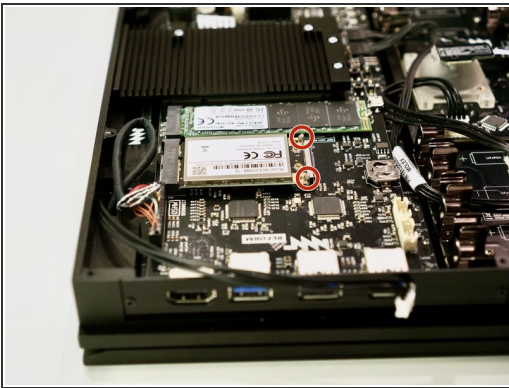
- Use the flat end of a spudger or a clean fingernail to pry both antenna connectors up from their sockets.
- ⓘ When reconnecting the antenna, either cable can be connected to either socket. The order doesn't matter.
- ⚠ Antenna cable connectors are fragile. When reconnecting them, ensure they are properly lined up with the sockets and do not apply excessive pressure.

Step 6 — Remove Antenna



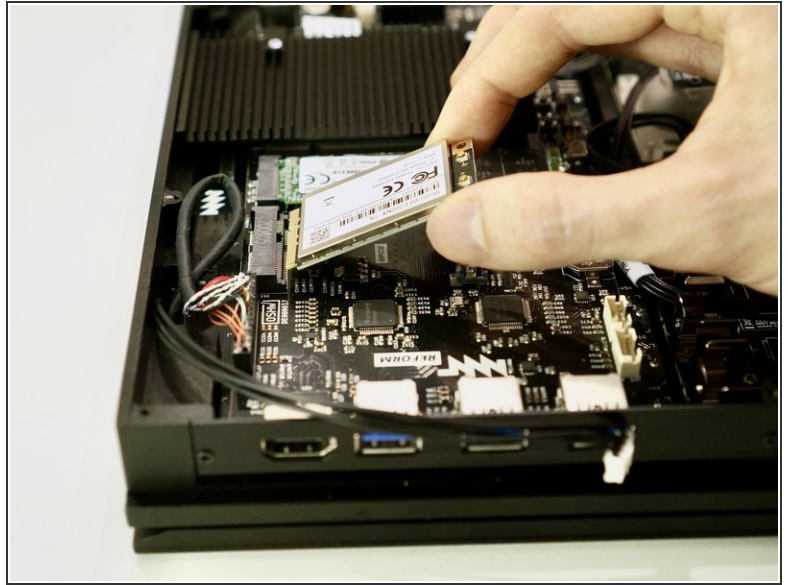
- Lift the acrylic holder with the Molex MIMO antenna out and set it aside.

Step 7 — Detach WiFi Card



- Pull the two metal tabs holding the WiFi card away from the mPCIe socket. The WiFi card will spring up on its own.
- ⓘ When replacing the WiFi card, simply press it down after inserting it into the mPCIe socket. You will hear a click when it latches.

Step 8 — Remove WiFi Card



- Pull the WiFi card out of its mPCIe socket on the motherboard.

⚠ To avoid damaging its socket on the motherboard, do not excessively lift the free end of the WiFi card.

To reassemble your device, follow these instructions in reverse order. Ensure that no cables are squeezed when replacing the bottom plate. Don't overtighten screws.