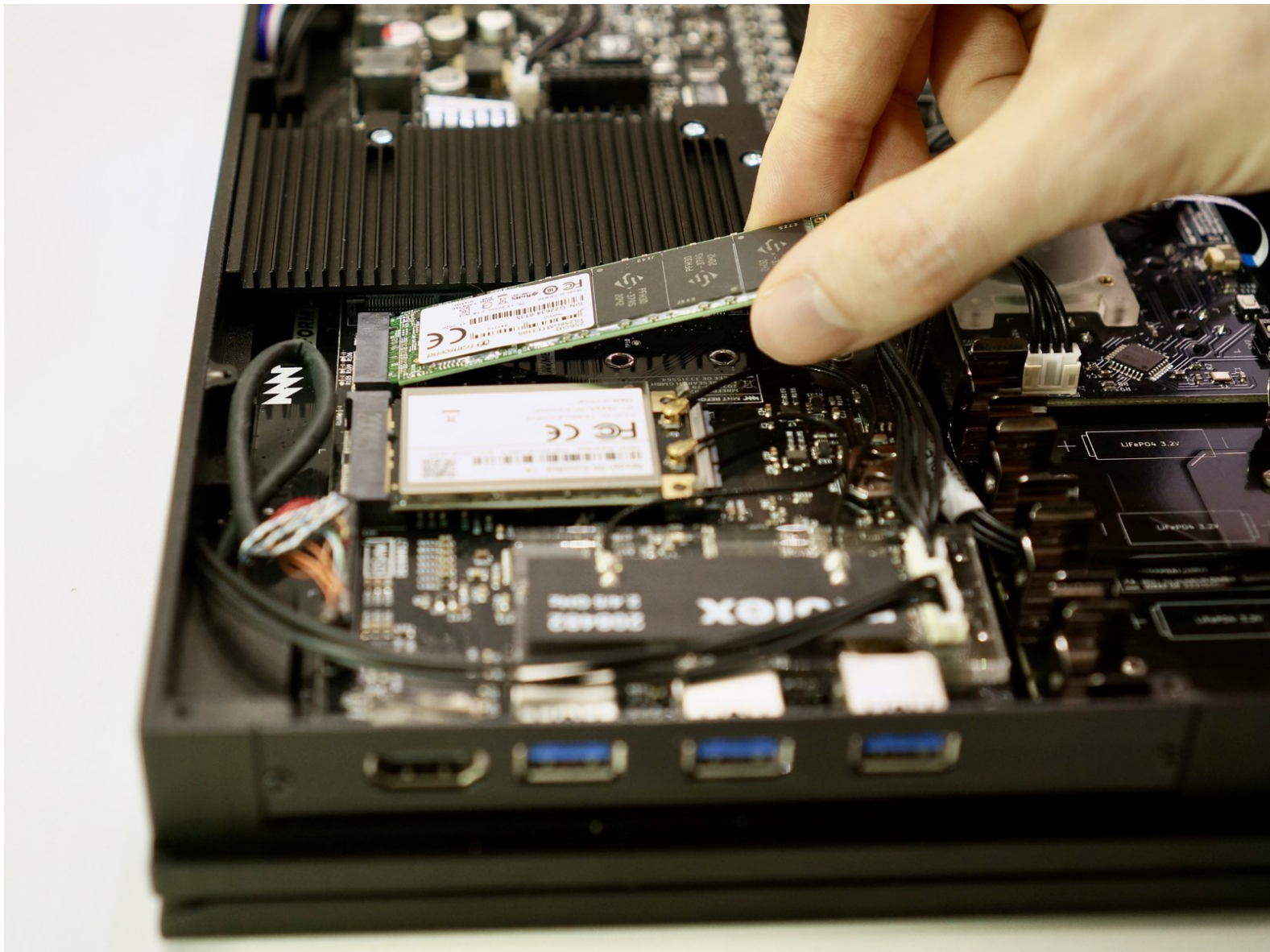




MNT Reform SSD Replacement

Use this guide to upgrade or replace the solid-state drive in your MNT Reform.

Written By: Neelfyn



INTRODUCTION

Use this guide to upgrade or replace the solid-state drive in your MNT Reform. Reform uses a standard M.2 M-key socket for NVMe SSDs.

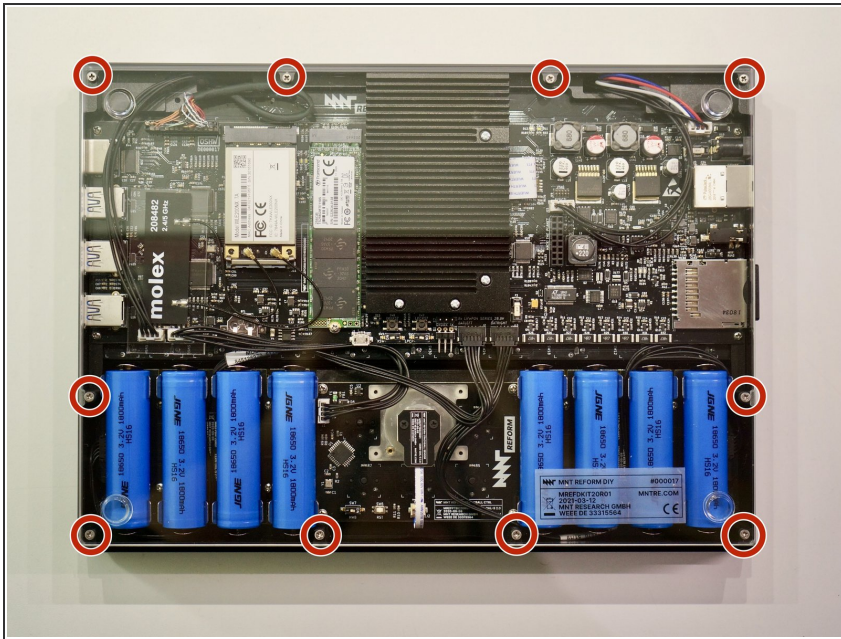
Before you perform this repair, if at all possible, back up your existing SSD.



TOOLS:

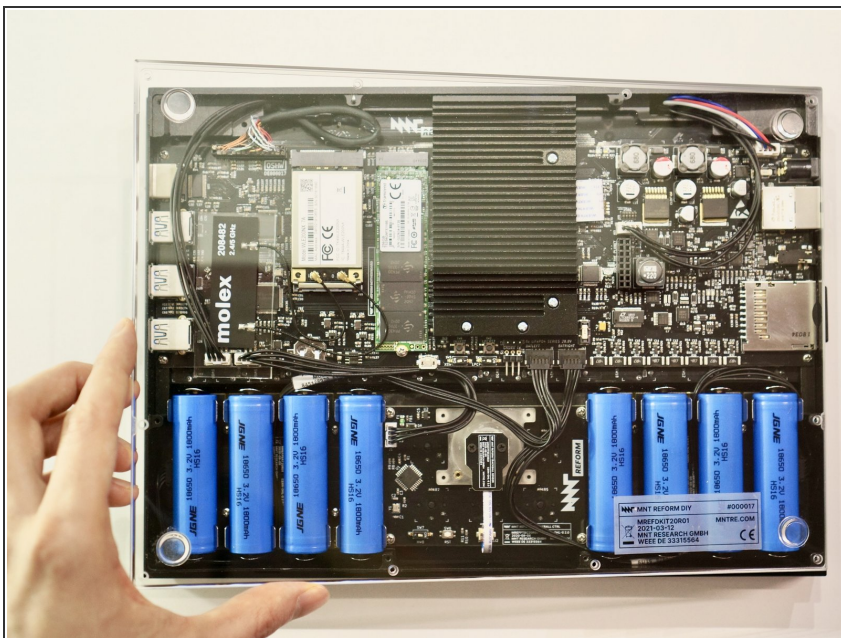
- [Phillips #0 Screwdriver](#) (1)
-

Step 1 — Remove Bottom Plate Screws



- Remove the following screws securing the transparent acrylic bottom plate to the main box:
 - Ten M2x6mm silver Phillips screws

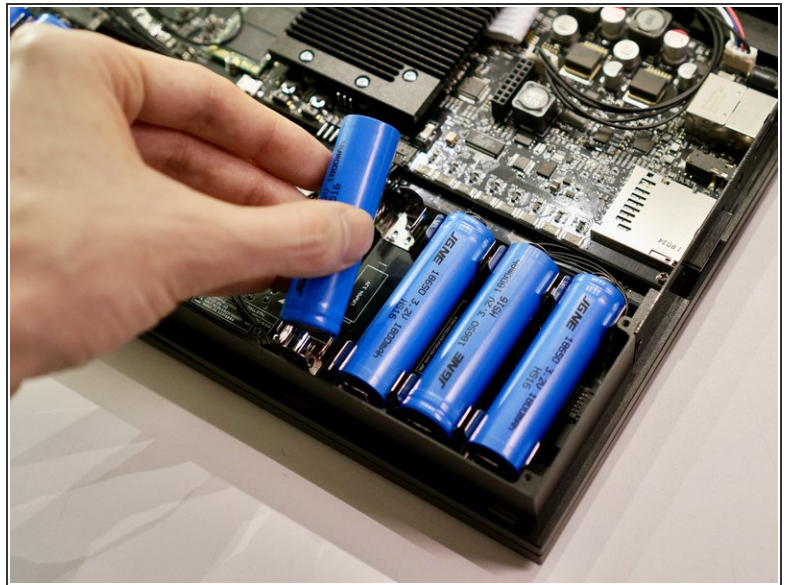
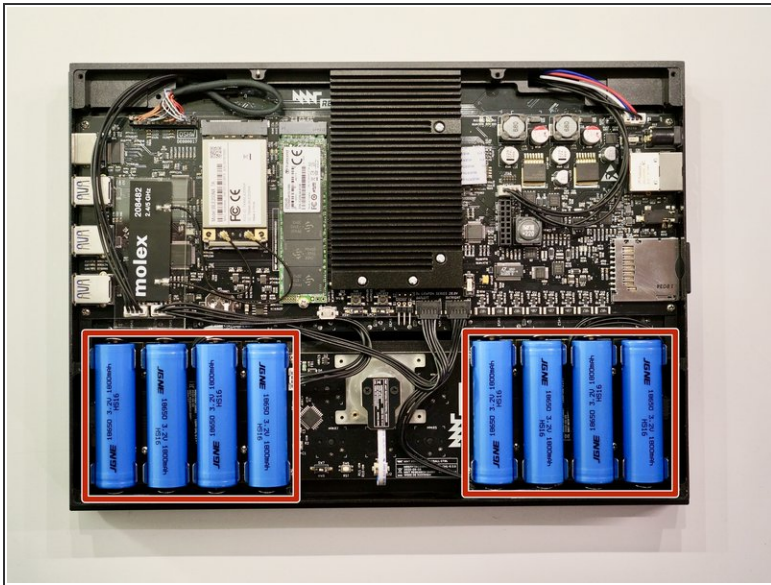
Step 2 — Remove Bottom Plate



- Lift the bottom plate and set it aside.

⚠ Before servicing anything on the inside, make sure to remove all battery cells.

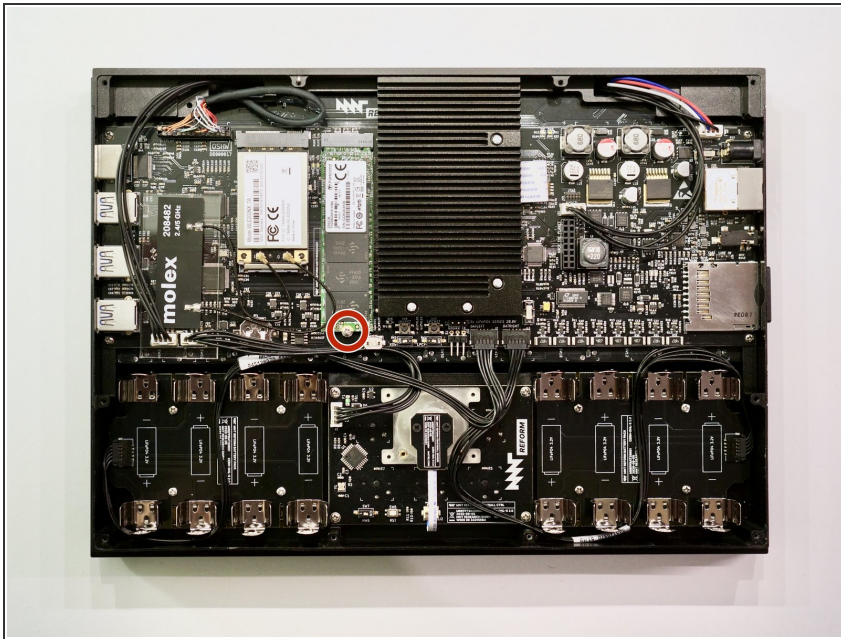
Step 3 — Remove Battery Cells



- Pull out the eight battery cells one by one, and set them aside safely.

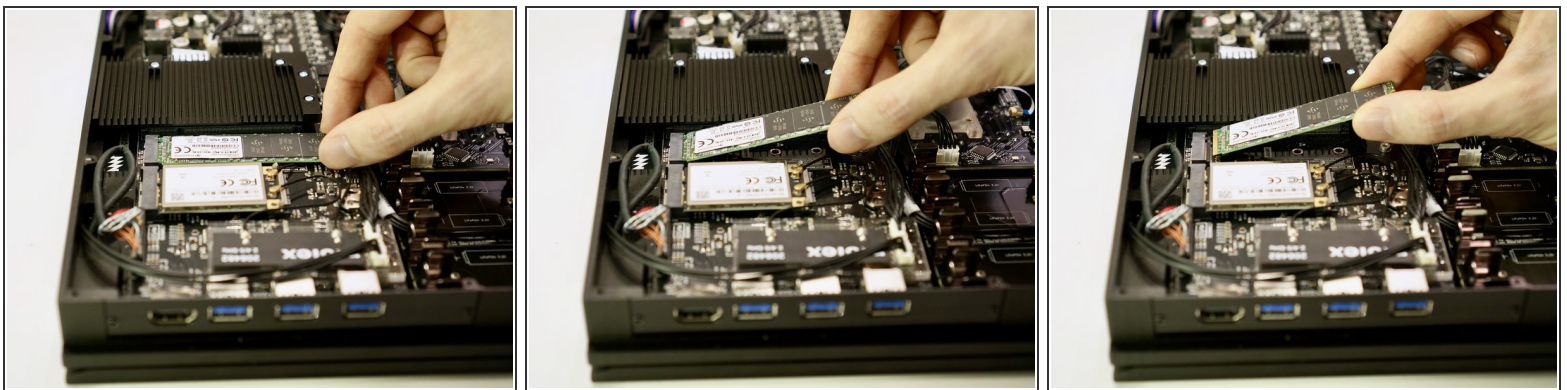
- ⚠ Do not use a metal tool to remove the batteries. You may accidentally short-circuit the metal pins of the battery holders.
- ⚠ When replacing the batteries, **pay attention to the polarity!** Inserting a cell the wrong way in will damage your device.
- ⓘ The circuit board indicates the + and - orientation for each cell.

Step 4 — Remove SSD Screw



- Remove the single M2×4 pan head screw securing the SSD to the motherboard.

Step 5 — Remove SSD



- Lift the free end of the SSD up slightly and pull the SSD straight out of its M.2 socket on the motherboard.

⚠ To avoid damaging its socket on the motherboard, do not excessively lift the free end of the SSD.

To reassemble your device, follow these instructions in reverse order. Ensure that no cables are squeezed when replacing the bottom plate. Don't overtighten screws.