



Motorola Defy XT SD Card Replacement

This guide details a step-by-step process on how to remove and reinstall the SD memory card on a Motorola Defy XT.

Written By: Dorian Capps

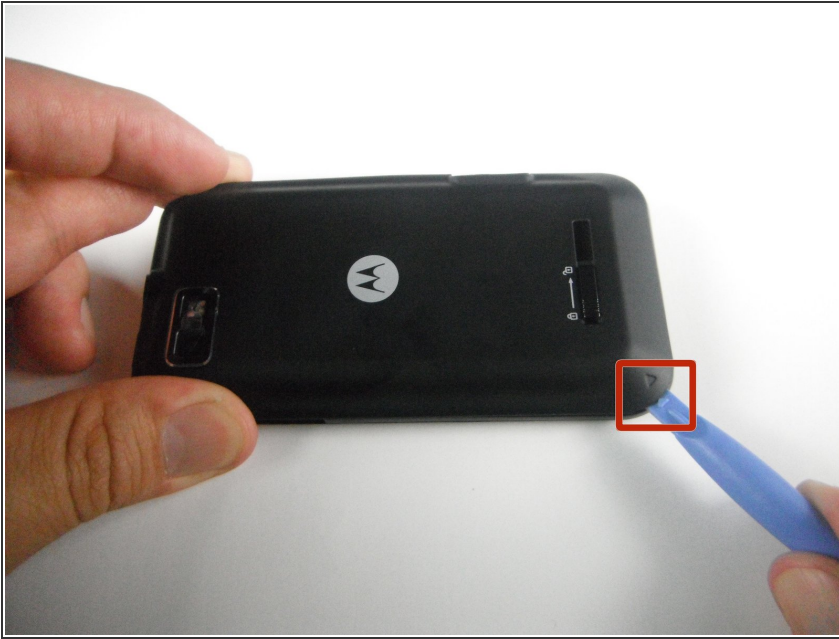




TOOLS:

- [iFixit Opening Tools](#) (1)
-

Step 1 — Battery



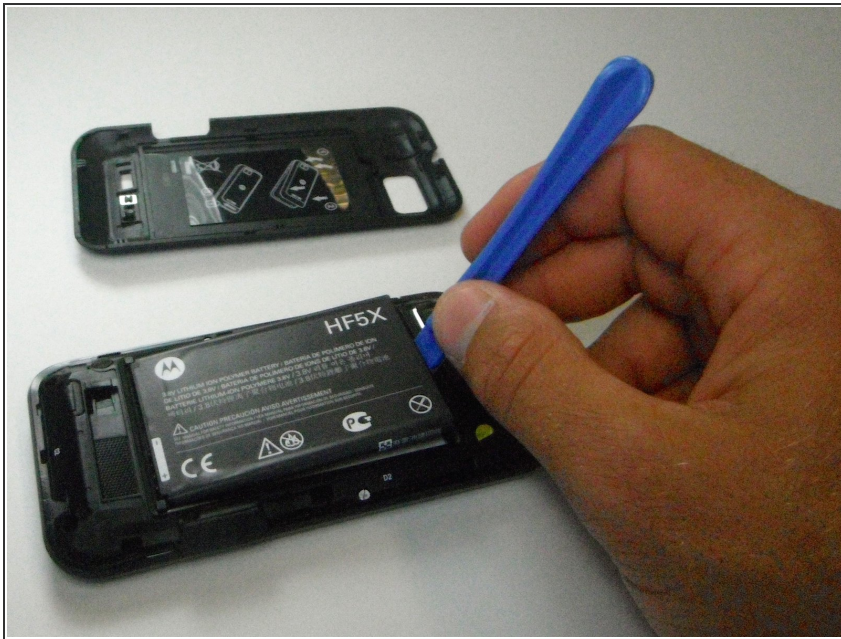
- Wedge the plastic opening tool in between the back cover and the body of the phone in the opening denoted by the arrow.

Step 2



- Once wedged in the opening, slide the opening tool sideways around the sides of the phone.
- Remove the back cover and set it aside.

Step 3



- Insert the opening tool between the battery and the battery holder and wedge the battery out.

Step 4 — SD Card



- Open the plastic cover with your finger, exposing the SD card.
- Use the opening tool to grab the edge of the SD card and pull it straight out.

To reassemble your device, follow these instructions in reverse order.