



Samsung Galaxy Note10 Plus 5G SIM Card Tray Replacement

How to remove or replace the SIM card on a Samsung Galaxy Note10+ 5G.

Written By: Arthur Shi



INTRODUCTION

Use this guide to remove the SIM tray and SIM card on your Samsung Galaxy Note10+ 5G.

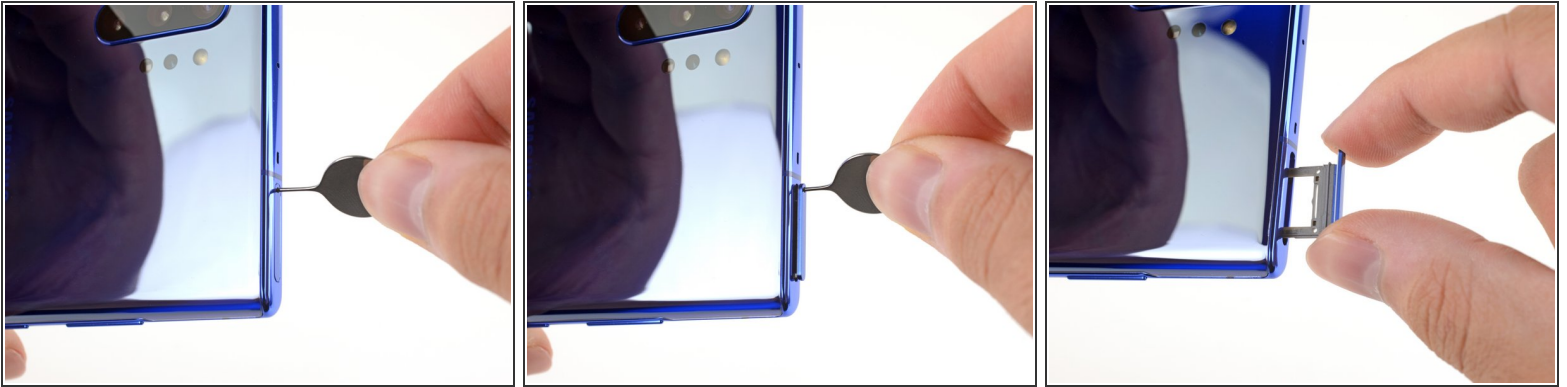
This guide uses steps written for the non-5G Note10+. Some images in this guide may show minor discontinuities. They shouldn't affect the overall guide procedure.



TOOLS:

- [SIM Card Eject Tool](#) (1)
-

Step 1 — Remove the SIM card



- Insert a SIM eject tool, bit, or a straightened paper clip into the small hole on the SIM card tray on the top edge of the phone.
- Press firmly to eject the tray.
- Remove the SIM card tray.

To reassemble your device, follow these instructions in reverse order.

Take your e-waste to an [R2 or e-Stewards certified recycler](#).

Repair didn't go as planned? Try some [basic troubleshooting](#), or ask our [Answers community](#) for help.