



# IBM ThinkPad 701C/CS Disassembly

A complete teardown guide for the IBM ThinkPad...

Written By: Hrushka



# INTRODUCTION

A complete teardown guide for the IBM ThinkPad 701C and 701CS models. For repair, refurbishing guides, and reproduction parts, visit <https://701c.org>.

This guide will use the **two-letter screw reference IDs** in brackets after the length. These IDs are found on **page 161** of the [service manual](#).

[video: <https://youtu.be/xvyYPVkkztQ>]

## 🔧 TOOLS:

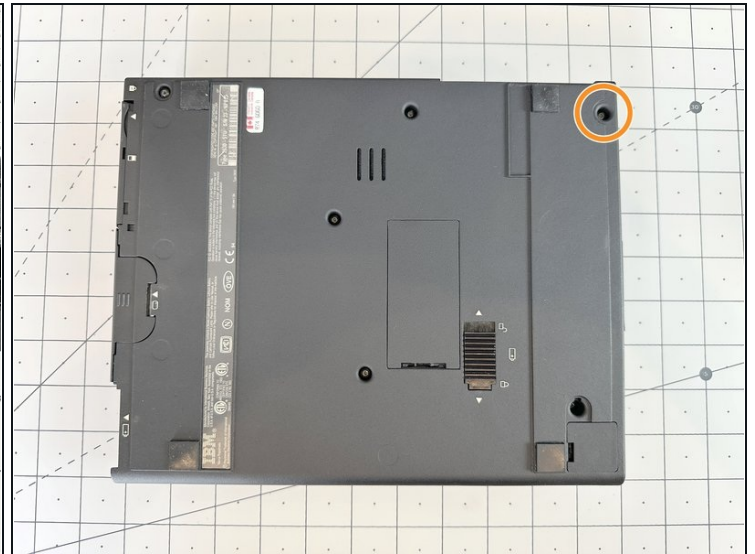
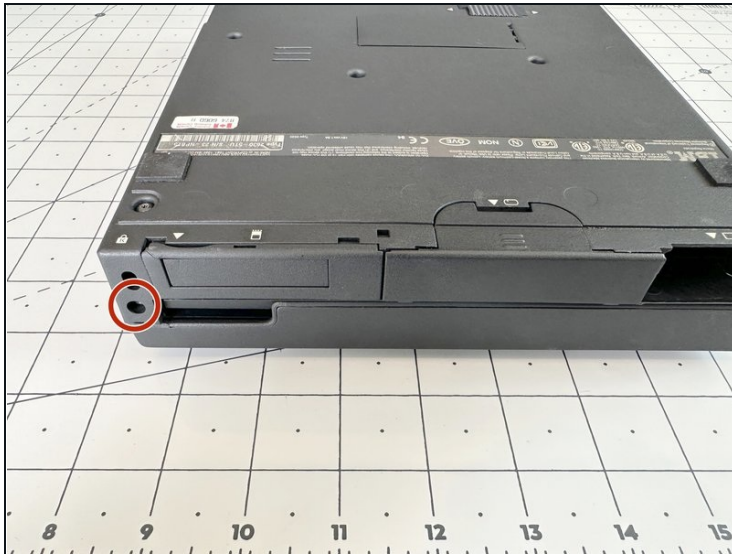
Spudger (1)

T1 Torx Screwdriver (1)

T6 Torx Screwdriver (1)

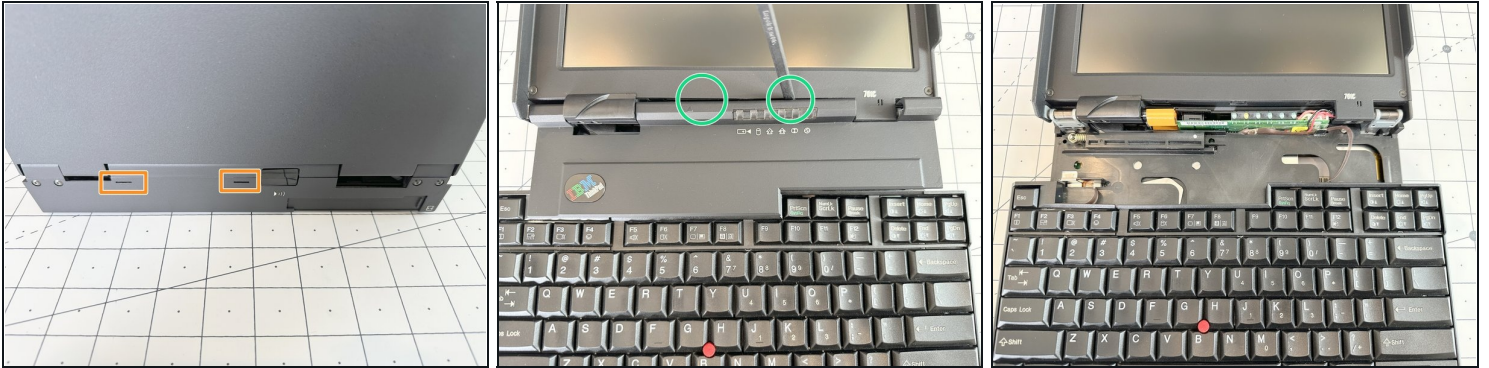
iFixit Opening Picks (Set of 6) (1)

## Step 1 — Remove the top plate screws



- ① This guide will use the [IBM Service Manual](#) **two-letter screw reference IDs** in brackets after the length. These IDs are found on **page 161** of the service manual.
- Remove the 6mm (**BC**) screw with a T6 Torx bit from the right side by the screen hinge.
- Rotate the laptop so the screen hinge is at the rear. Remove the 16mm (**BK**) screw using a T6 Torx bit.

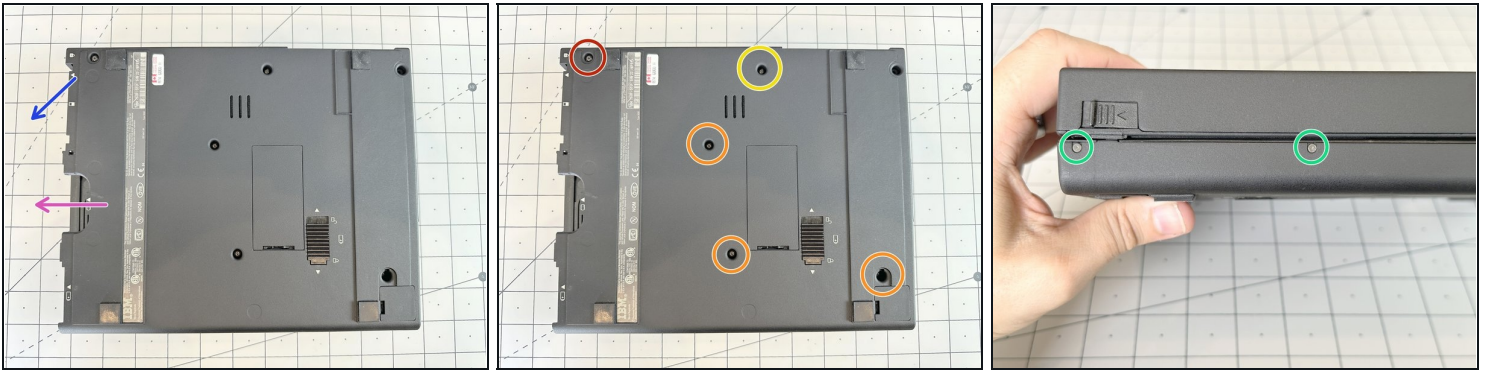
## Step 2 — Remove the top plate



- Open the screen so its a bit past vertical and rotate the back of the laptop toward you.
- Using a plastic spudger, push the two plastic tabs while lifting up gently on the top plate.
- Lay the screen completely flat and use a plastic spudger to push the back of the top plate up and towards you.
- You should now be able to lift the top plate up and out, exposing the LCD converter board and keyboard track.



### Step 3 — Remove the keyboard screws



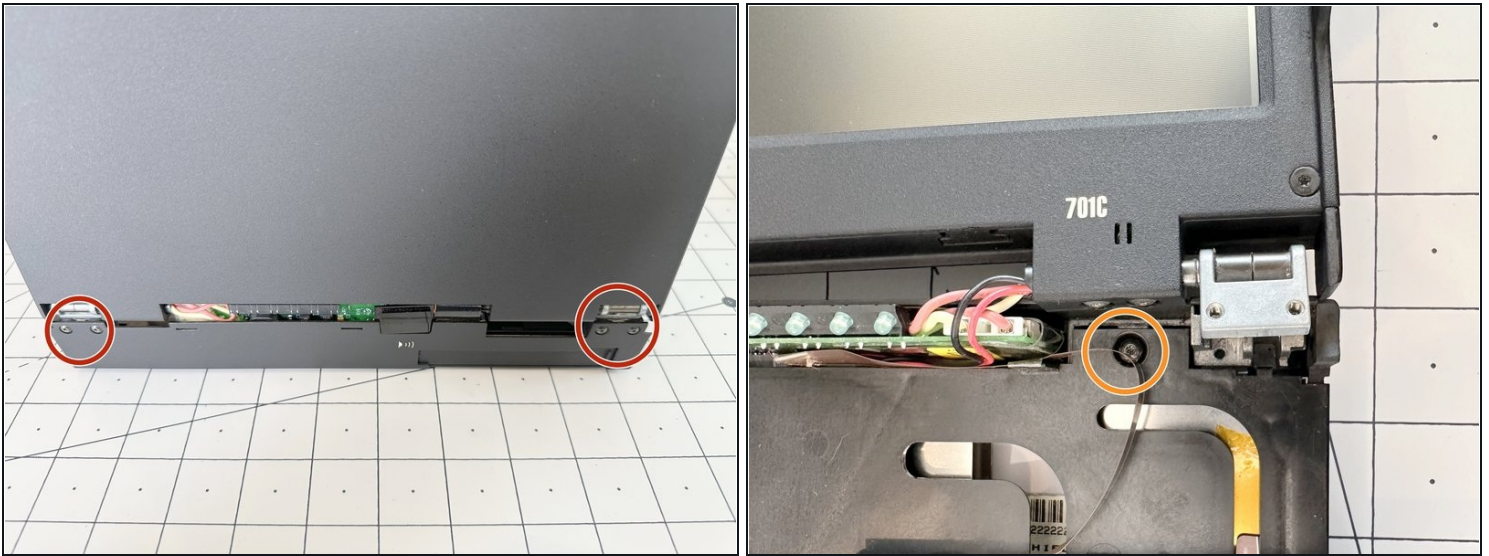
- Remove the PCMCIA cover by pushing out on the top edge and rotating downward to release the hard drive.
- Remove the Hard disk drive by sliding the unlock button and pushing it out. The HDD should be removed after the Battery and the PCMCIA cover to avoid damage to the plastic clips.

⚠ These laptops are notorious for the rubber paint liquifying over time. This may be difficult to do, but be careful to not break the case plastics or the plastic drive harness.

- Flip the laptop over so the screen hinge is facing away from you. Remove the 8mm (**BH**) screw at the top left with a T6 Torx bit.
- Remove the three (3) 6mm (**BC**) screws from the middle and bottom right with a T6 Torx bit.
- Remove the 10mm (**BE**) screw from the top center with a T6 Torx bit.
- Remove the four (4) 3mm (**BF**) screws from the front of the lower case using a T1 Torx bit.

⚠ These T1 screws are fragile. Don't lose them and do NOT try to use any other type of driver to remove them. They can be easily stripped.

## Step 4 — Remove keyboard 1



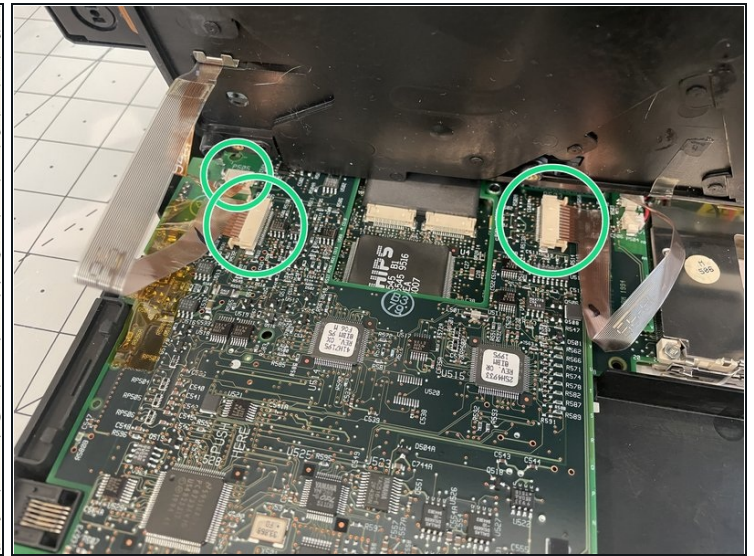
⚠ Do not try to remove the screw beneath the right screen hinge before removing the display. You will likely strip the head, given the angle.

- Flip the laptop over so that the display hinge is facing you and open the display to a 90 degree angle from the chassis.

⚠ Support the display with one hand during the next step.

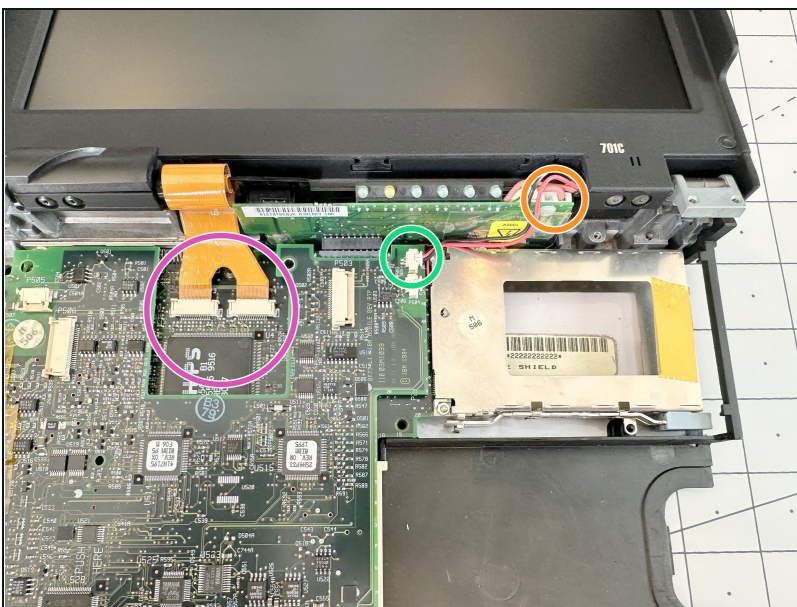
- Remove the four (4) 7.5mm (**BG**) screws from the back using a T6 Torx bit. At this point the screen will come free.
- Carefully pull up to remove it from its posts and rest backwards, exposing the next screw.
- Remove the 6mm (**BC**) screw from the top right of the chassis using a T6 Torx bit.

## Step 5 — Remove the keyboard 2



- To remove the keyboard, push the assembly back towards the display, releasing it from the front clips and tilt it up towards the display.
- Using a plastic Spudger tool, remove the ribbon cables from connectors and set it aside.
- Lift off the keyboard and set aside.

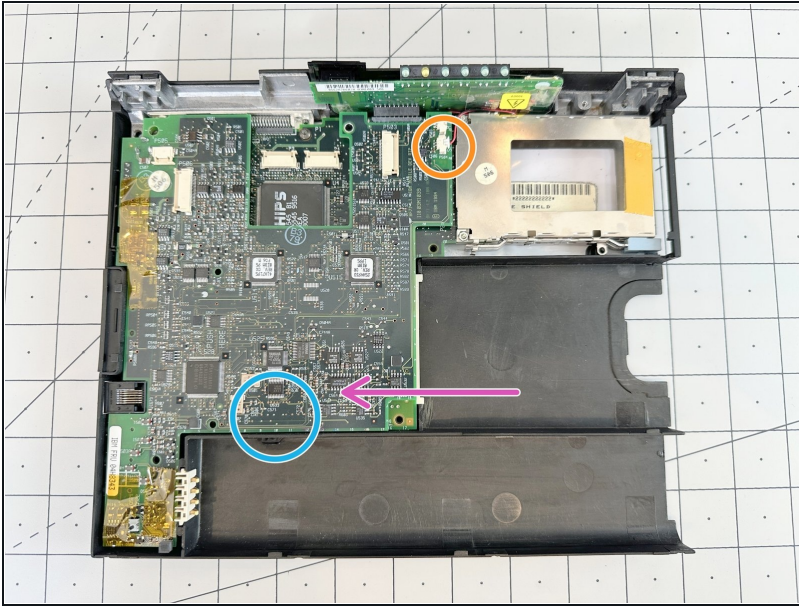
## Step 6 — Remove the display



- Disconnect microphone cable from the daughter board using a plastic spudger tool.
- Disconnect the power cable to the display inverter board.
- Disconnect display ribbon cables from the daughter board using a plastic spudger tool.
- Pull the display up and away and set aside.



## Step 7 — Remove daughter board



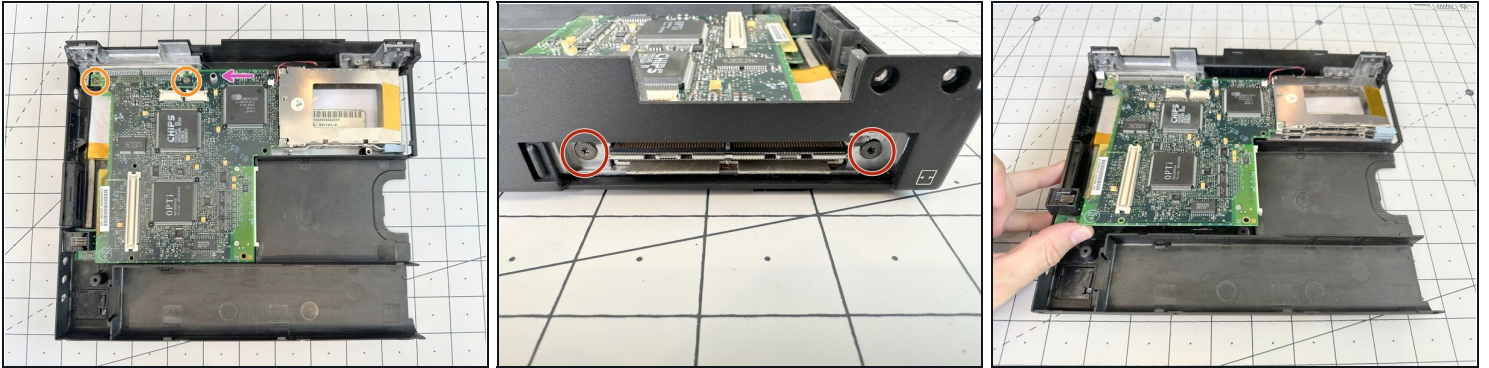
- Disconnect the speaker cable.

- Use a plastic spudger to press down on the system board where indicated during the next step to safely disconnect the daughter board from the main system board.

⚠ When bracing using a plastic spudger, make sure you're not applying any pressure to the board components.

- To disconnect daughter board from connector. Tilt up from right side and remove up and to the left.

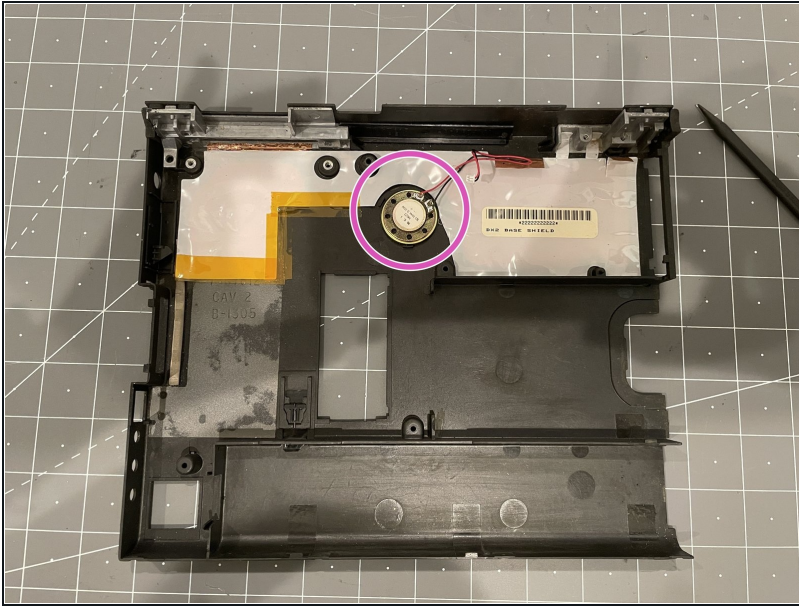
## Step 8 — Remove main board & modem



- Remove two (2) *flat* 6mm (**BL**) screws close to the connector using a T6 Torx bit.
- Turn the case around so the back is facing you and remove two (2) 6mm (**BC**) screws from the back holding the connector to the metal stiffener.
- ⓘ The connector may be glued. You can use a spudger to carefully pry the connector away from the stiffener and loosen the glue.
- ⚠ During the next step, support the modem while removing the main board. It is connected and not supporting it could damage the connector.
- Lift off main board.
- A metal PCB spacer might loosen. Ensure that you clip it back onto the board during assembly.

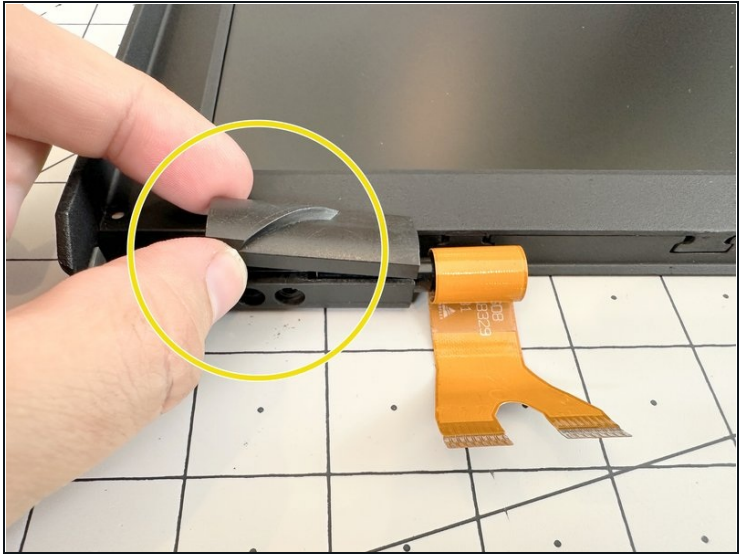


## Step 9 — Remove the speaker



- Using a plastic spudger or a hobby knife, carefully loosen the glue between the speaker and the case.
- Remove the speaker and set aside.

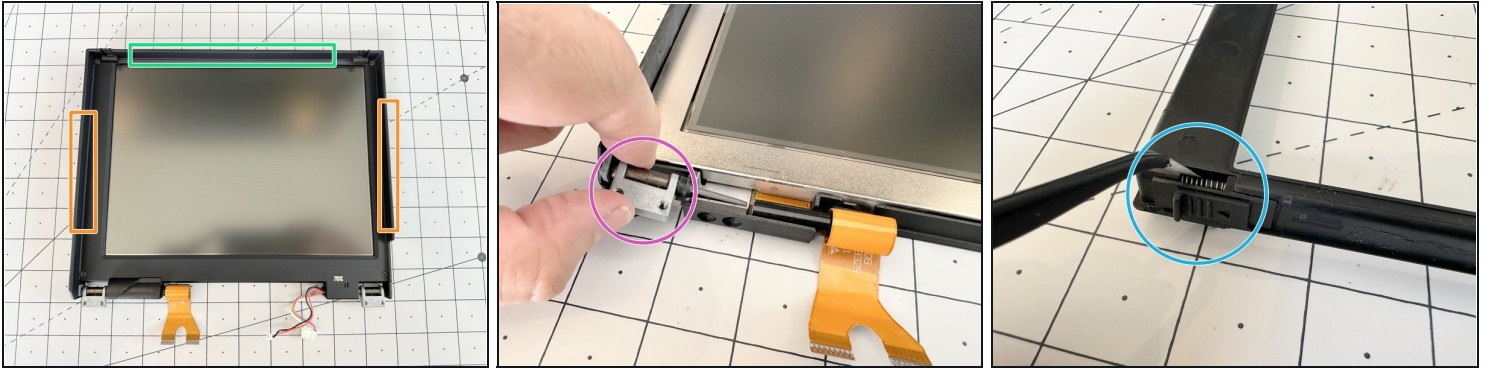
## Step 10 — Remove display housing



⚠ The inner frame is thin and may be brittle, be careful when removing!

- Remove the four (4) 8.4mm (**BD**) screws from the inside frame using a T6 Torx bit.
- Remove the two (2) 8mm (**BH**) screws from the bottom left display bracket using a T6 Torx bit.
- Remove the two (2) 5mm (**BI**) screws from the bottom right display bracket using a T6 Torx bit.
- Lift off the left hinge cover before proceeding to the next step.

## Step 11 — Remove display housing Contd.



- Use a plastic pick to unclip the T-shaped snaps along the sides of the bezel.
- The top of the bezel may be glued to the frame. Carefully dislodge the bezel from the glue before lifting the frame out and away.
- After removing the bezel, you can remove the display hinges by lifting them up and out.
- The display should now come away freely from the frame.
- If needed, you can remove the display latches from the back of the bezel by using a pair of tweezers to squeeze the springs. The latches should pop out.

---

To reassemble your device, follow these instructions in reverse order.