



Toshiba Portege R500 Cooling Fan Replacement

We will be installing a new fan into the laptop.

Written By: JRJones



INTRODUCTION

In this guide we will be disassembling the device so that we can replace the fan in the laptop.



TOOLS:

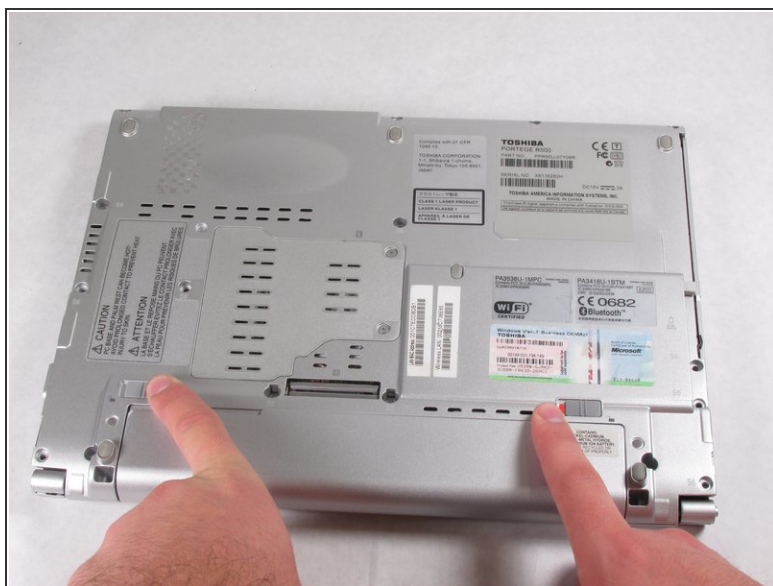
- [Phillips #00 Screwdriver](#) (1)
- [iFixit Opening Tools](#) (1)



PARTS:

- [Toshiba PORTEGE R500 GDM610000425 Fan and Heat Sink](#) (1)

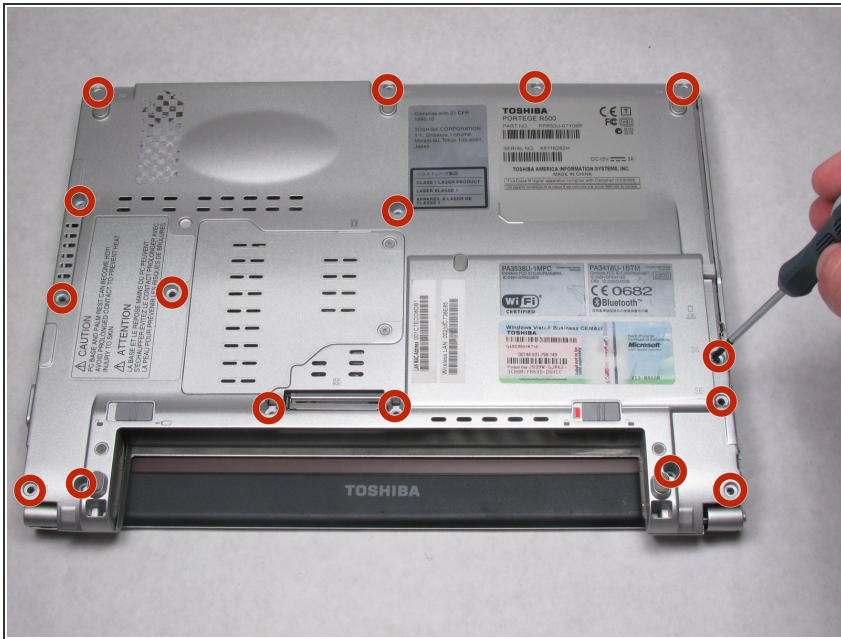
Step 1 — Battery



! Make sure the device is off to prevent data loss.

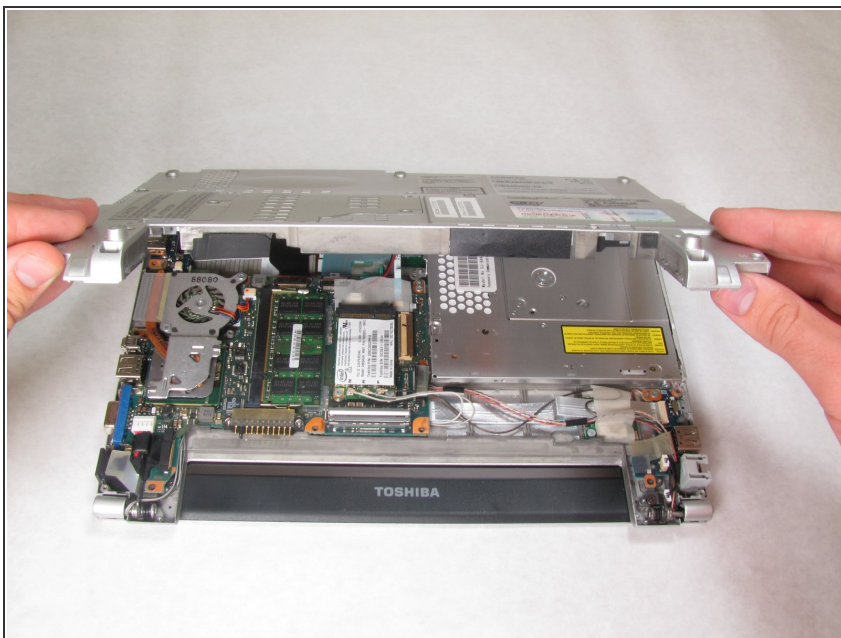
- Slide both latches to the unlocked position to release the battery.
- i** Switch the latch on the right to reveal red. The latch on the left needs to be held.
- Pull the battery toward you while holding the left latch.

Step 2 — Cooling Fan



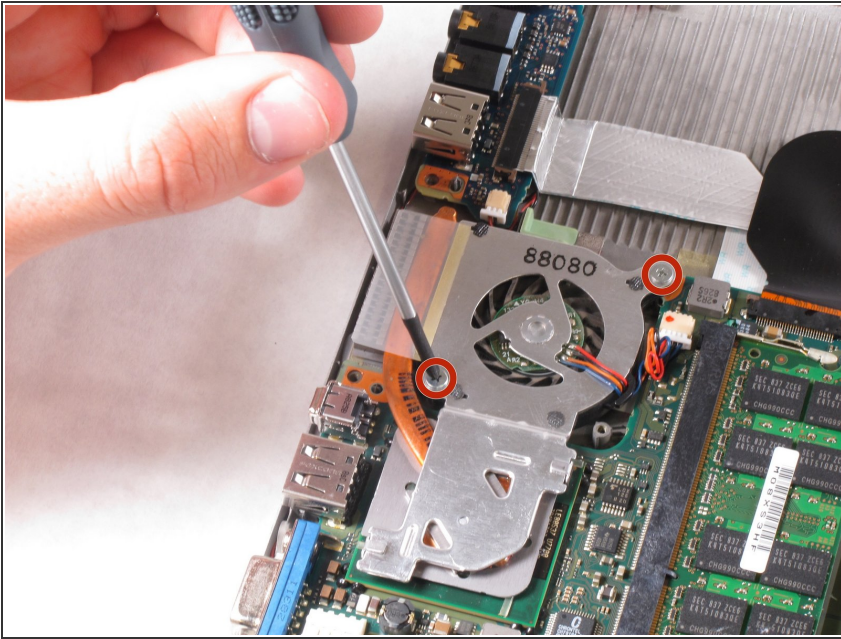
- Remove the sixteen screws at the locations shown with the Phillips 00 screwdriver.

Step 3



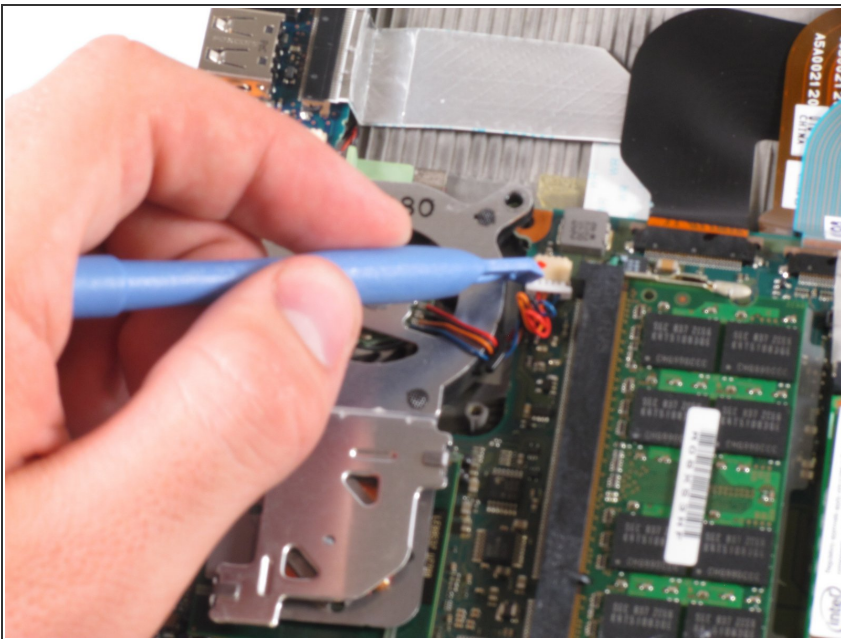
- Pull up on the back casing and remove it.

Step 4



- Remove the two 5.5 mm screws from the fan with the Phillips 00 screwdriver.

Step 5



- Disconnect the fan's power connector using the rounded handle plastic opening tool.
- The fan should now be free of the laptop and can be removed.

To reassemble your device, follow these instructions in reverse order.