



# Toshiba Satellite A215 S4697 Hard Drive Replacement

Replacing a hard drive is a great yet simple...

Written By: Mike Dongyub Ryu



# INTRODUCTION

Replacing a hard drive is a great yet simple fix. Make sure your new drive is the 2.5" laptop hard drive!

## TOOLS:

Phillips #1 Screwdriver (1)  
iFixit Opening Tool (1)

## PARTS:

1 TB SSD (1)  
250 GB SSD (1)  
Crucial MX500 500 GB SSD (1)  
2 TB SSD (1)

## Step 1 — Battery



- Close the laptop and turn it over so that the base is facing upwards and the spine is facing away from you.
- Find the battery compartment.
- Slide the left slider which is just beneath the battery compartment into its leftmost position.

## Step 2



- Slide and hold the right slider into its rightmost position. Lift the battery out of the compartment.
- Do not touch the gold nodes inside the compartment.

## Step 3 — Hard Drive



- Locate the hard drive in the left hand corner, and remove the two 4mm Phillips #1 screws.

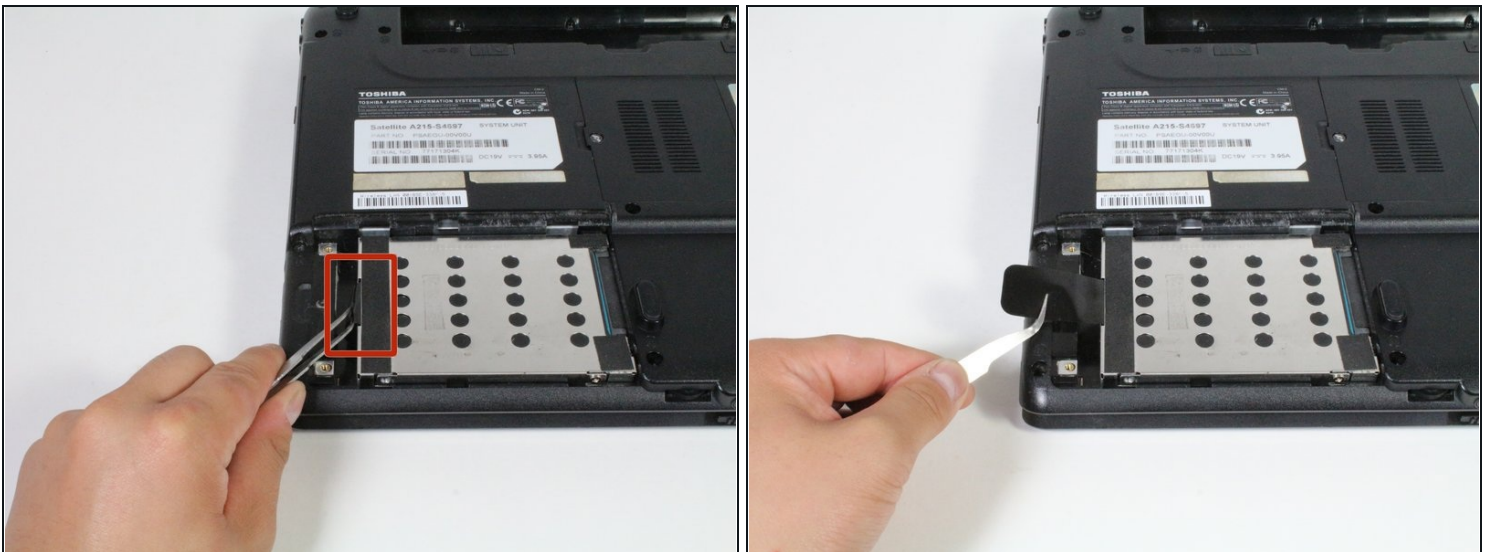


## Step 4



- Using a plastic opening tool, open the compartment and remove the compartment cover.

## Step 5



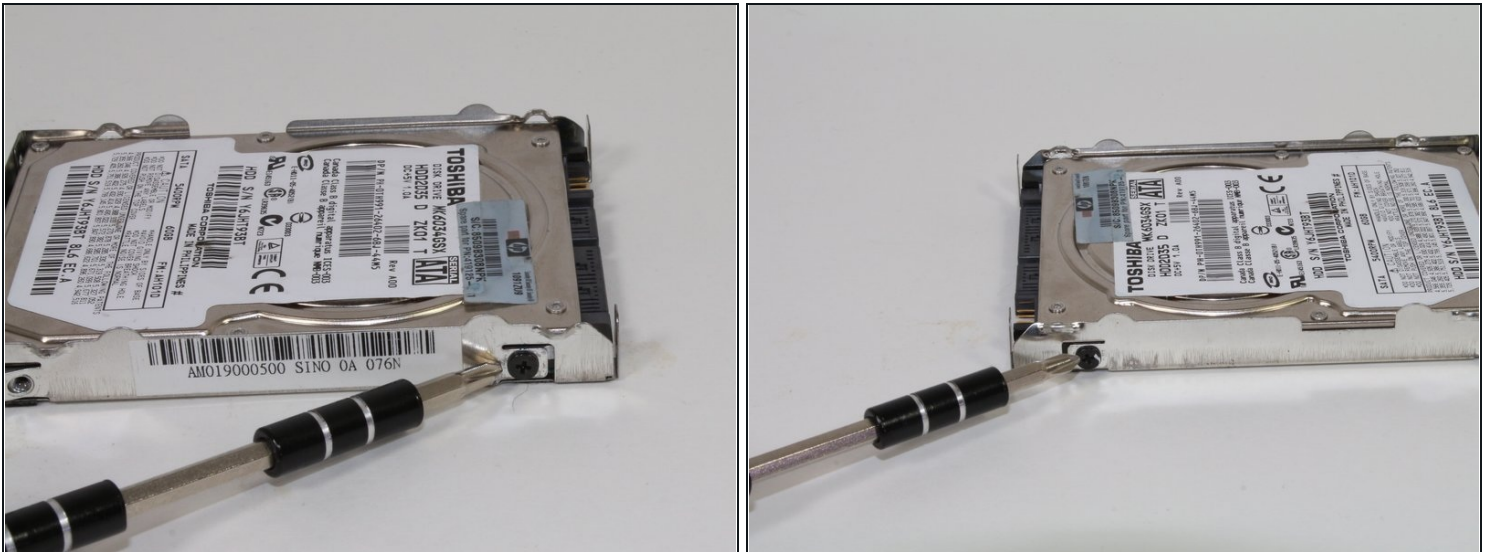
- Use a pair of metal [tweezers](#) to grab the plastic pull-tab that is tucked in underneath the hard drive.

## Step 6



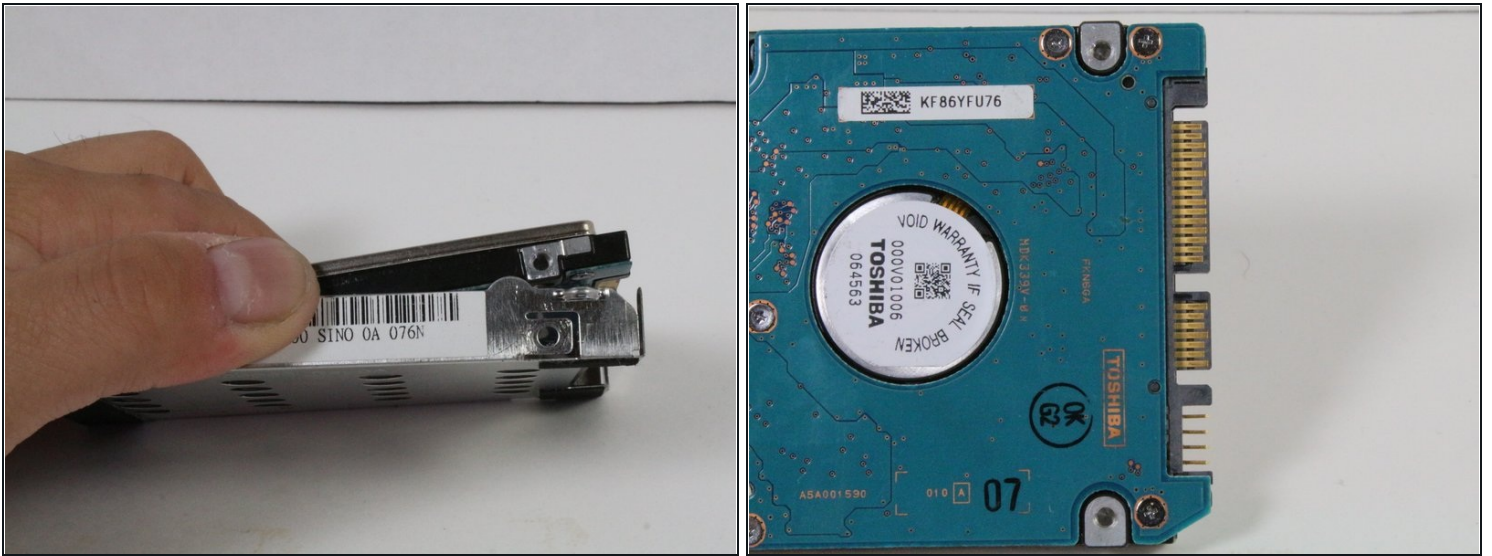
- Using the plastic pull-tab, carefully pull the hard drive to the left to detach it from its connector.
- Remove the hard drive assembly from the device.
- ⓘ This assembly consists of the actual hard drive and the metal housing. Metal housing is necessary for the reassembly of the device.

## Step 7



- Flip over the hard drive assembly and remove two 4mm Phillips #1 screws at the top left and right side of the hard drive housing.

## Step 8



- Carefully separate the actual hard drive from the hard drive assembly.

⚠ Do not touch the hard drive's connectors.

To reassemble your device, follow these instructions in reverse order.