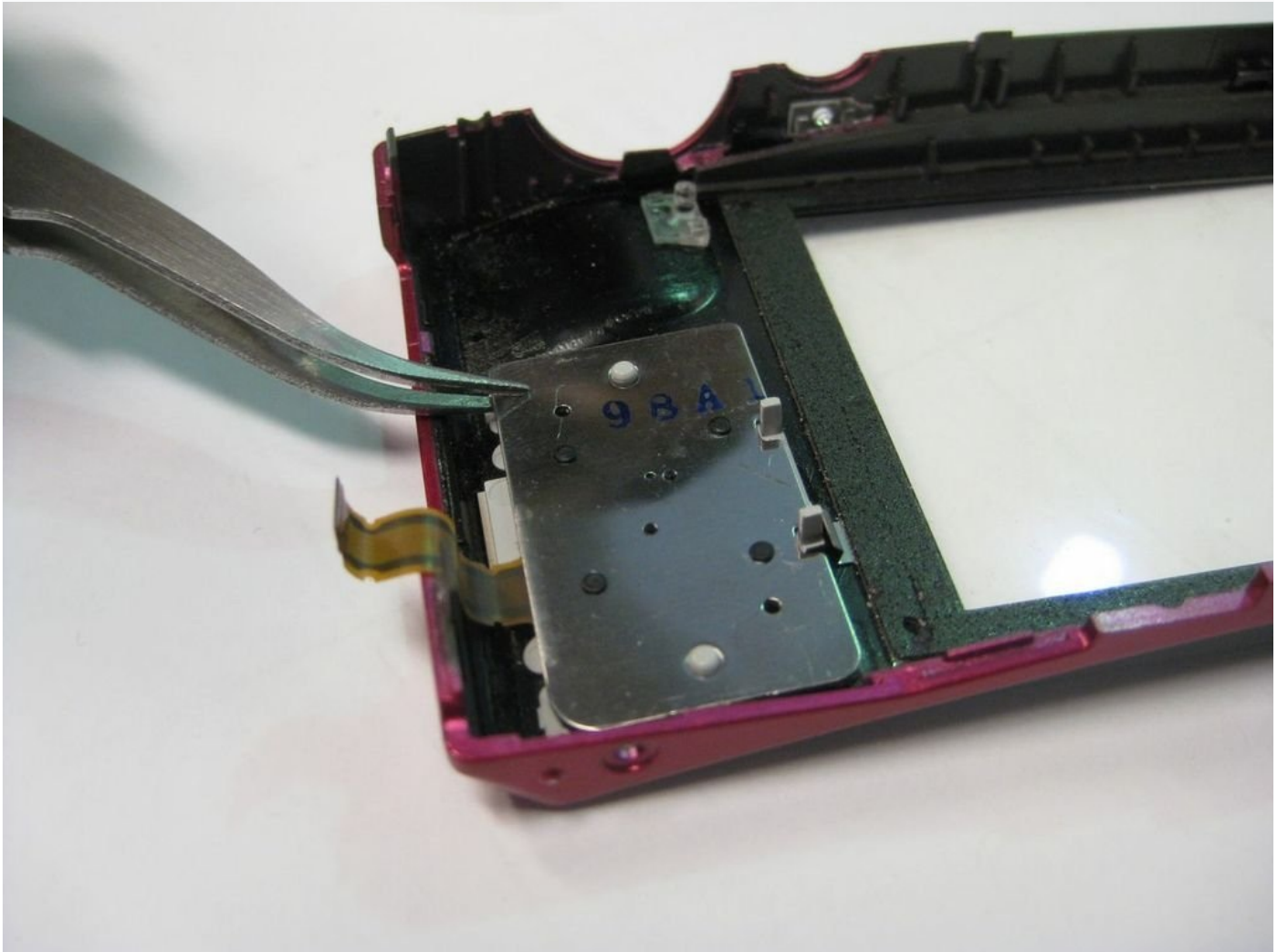




# Rotary Multi Selector Wheel Removal

This guide is for the removal or installation...

Written By: Andrew Lau



# INTRODUCTION

This guide is for the removal or installation of the rotary multi selector wheel.

## TOOLS:

[iFixit Opening Tool](#) (1)

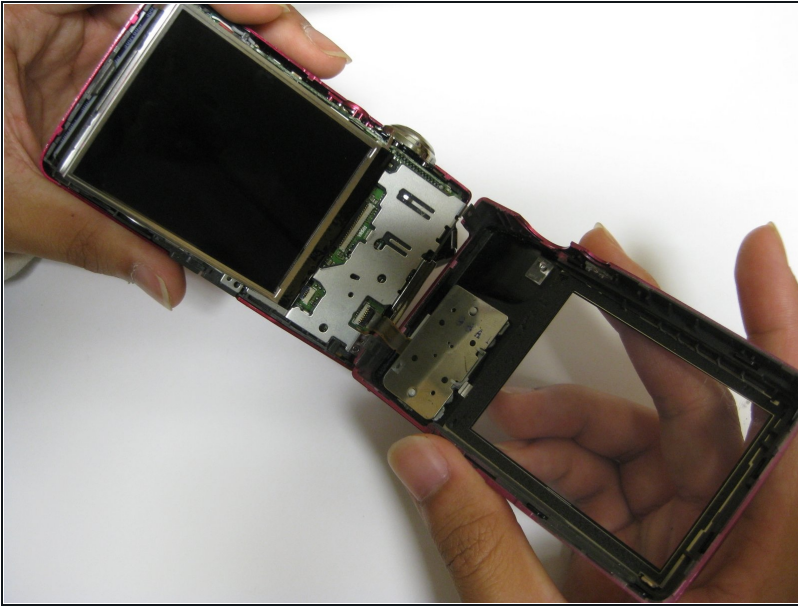
[Tweezers](#) (1)

## Step 1 — Back Cover Removal



- Unscrew the two 3.5mm Phillips screws from the side with the AV outlet.
- Unscrew the 3.5mm Phillips screw from the opposite side of the camera.
- Unscrew the six 3.5mm Phillips screws from the bottom of the camera.

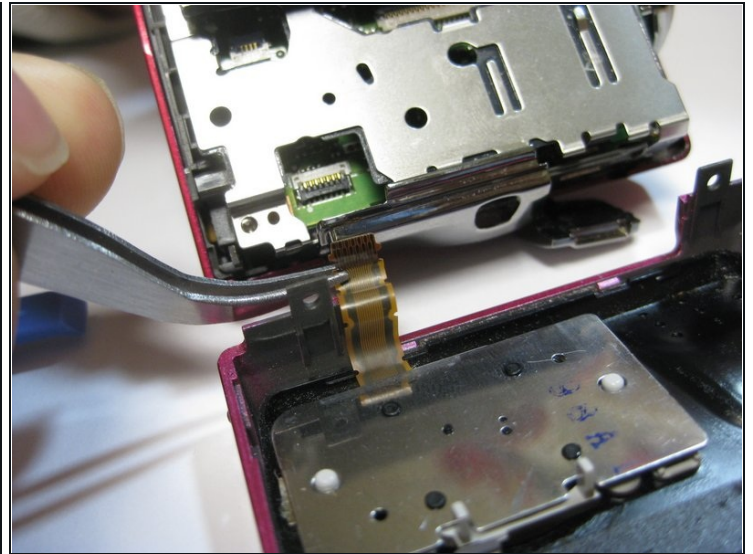
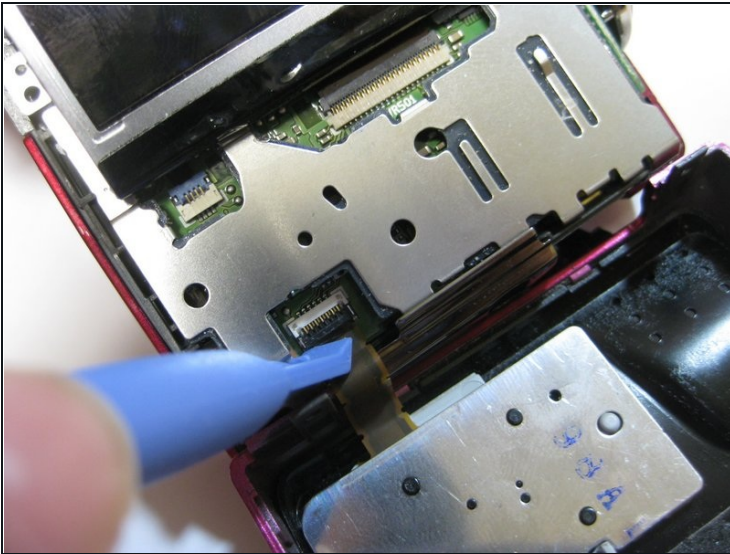
## Step 2



- Carefully remove the back casing from the camera.

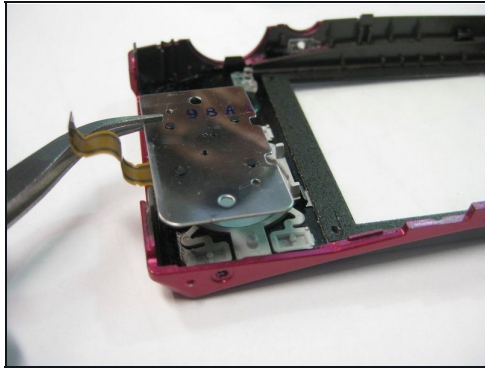
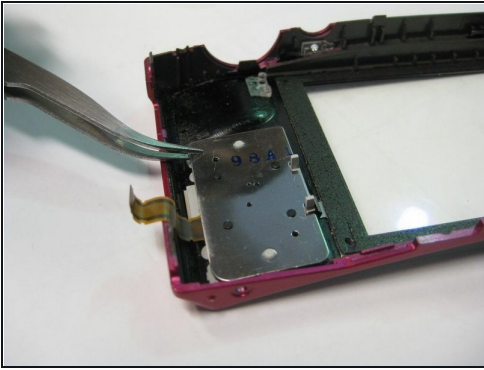
⚠ Be mindful when removing the back casing as there is a ribbon that still connects the back casing to the motherboard.

## Step 3 — Detaching Ribbon



- Place the plastic opening tool underneath the ribbon tab as shown. Gently lift the tab up.
- Gently pull the ribbon from the logic board with [tweezers](#).
- With the ribbon disconnected, the back casing should now be detached from the rest of the camera.

## Step 4 — Rotary Multi Selector Wheel



- Lift up the metal cover and its button slowly using the [tweezers](#).

---

To reassemble your device, follow these instructions in reverse order.