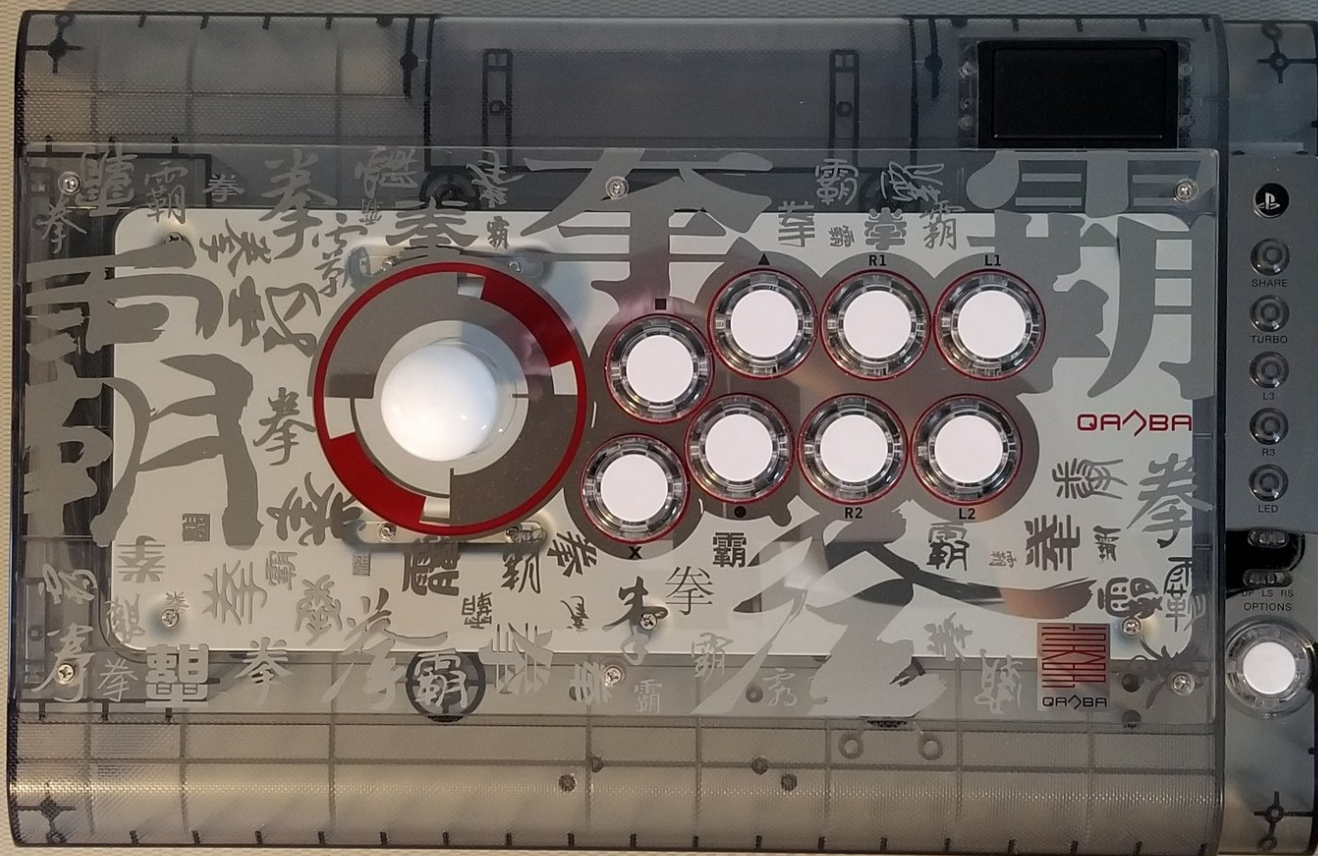




Qanba Crystal Joystick and Buttons Replacement

How to replace the buttons, joystick and artwork on your Qanba Crystal controller.

Written By: Kevin Vu



INTRODUCTION

If you want to customize the parts on your Qanba Crystal then this is the guide for you. This guide will walk you through how to change the buttons, joystick and artwork on this controller.

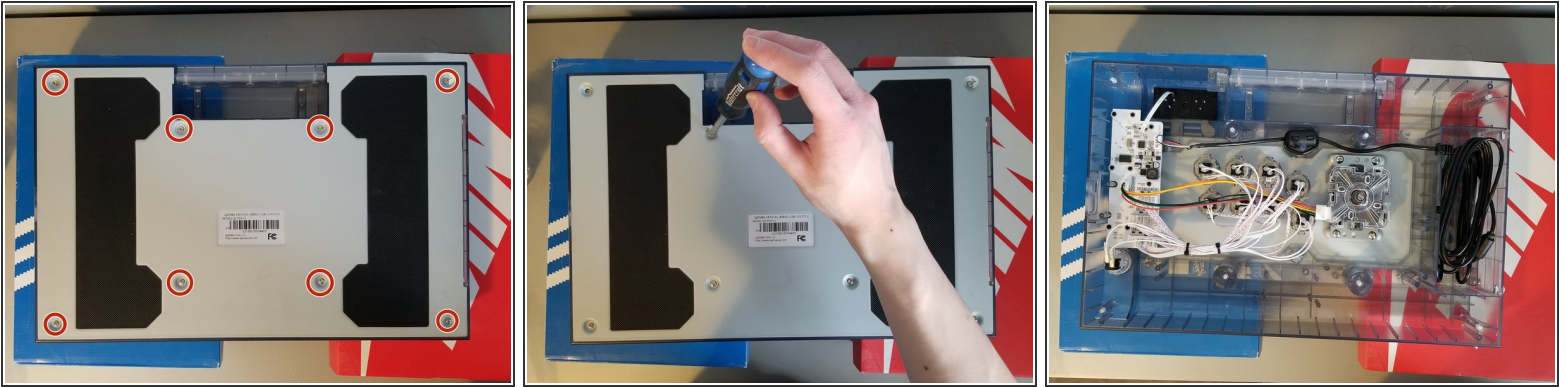
Both the controller and it's metal plate on the bottom are heavy and in this guide you will be flipping the controller a couple of times so having a clear workstation would be advised. The use of two boxes (shoeboxes will do fine) to hold up the controller is also advised as it can avoid potential damage to the joystick.



TOOLS:

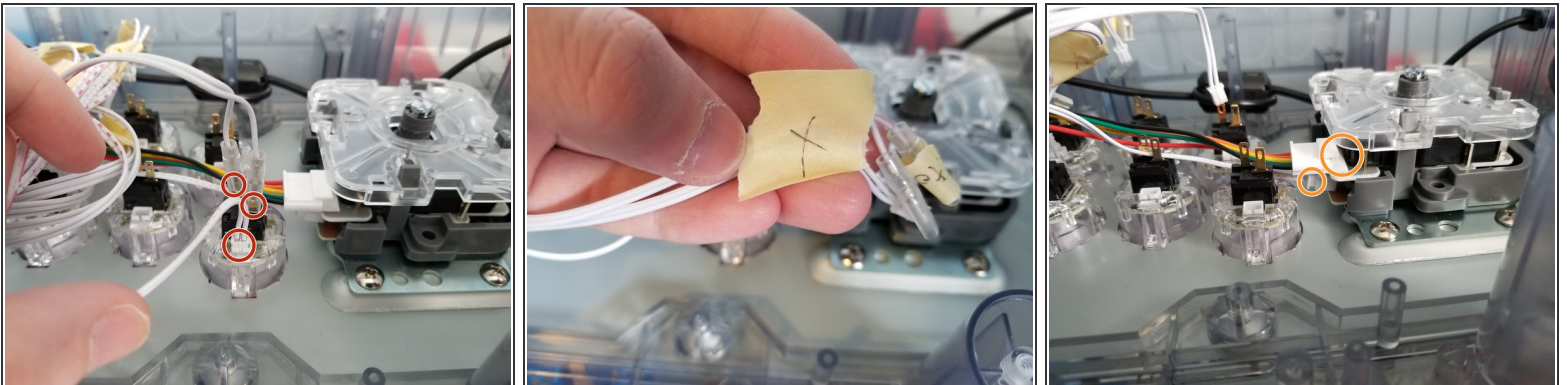
- [Phillips #1 Screwdriver](#) (1)
 - [6-in-1 Screwdriver](#) (1)
 - [ESD Safe Tweezers Blunt Nose](#) (1)
-

Step 1 — Button, Joystick and Artwork



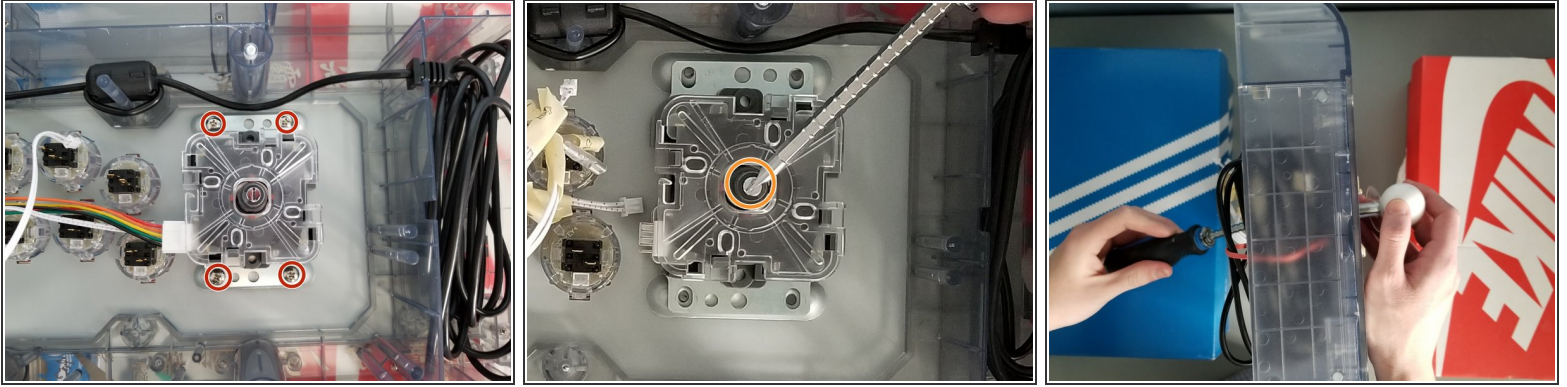
- Use the Phillips #1 screwdriver to remove the eight 20 mm screws.
- Remove the metal plate to gain access to the internals of the device.

Step 2



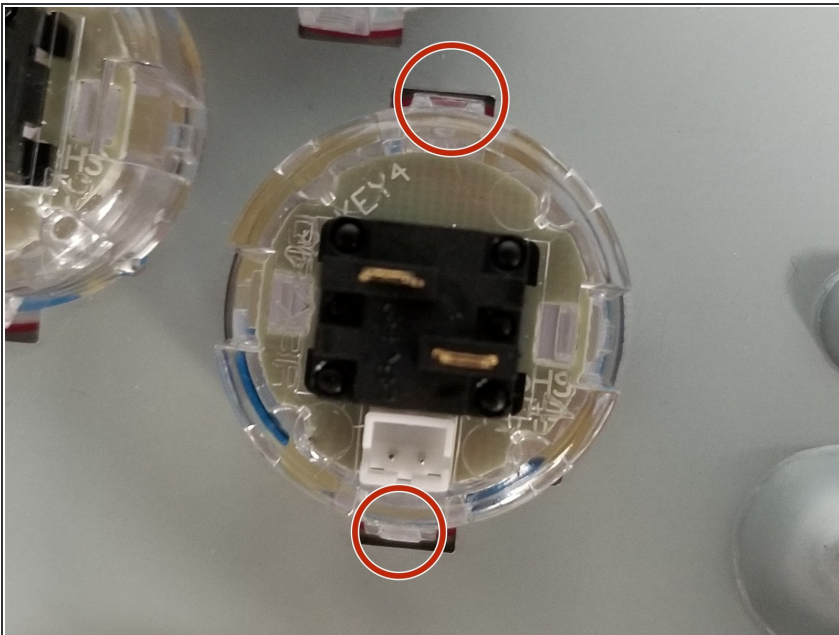
- ⓘ Taking a picture or marking cables with masking tape is advised as it will help with the reassembly process.
- Each button has three cables, unplug these from each one.
- The joystick has two cables, unplug both of these.
- ⓘ The use of ESD safe tweezers may assist with unplugging the cables.

Step 3



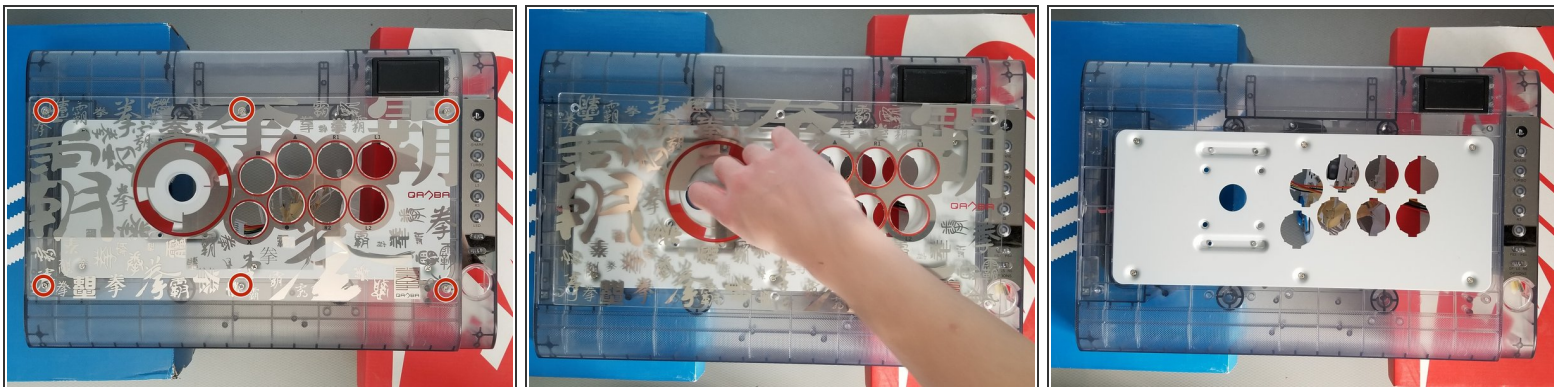
- Use the Phillips #1 screwdriver to remove the four 10 mm screws.
- Use a flathead screwdriver to hold the screw in place.
- Twist off the ball top of the joystick while holding the screw in place with a screwdriver.
- Remove the joystick and all of its components.

Step 4



- Press in the tabs on the top and bottom of the buttons to remove them.
- ⚠ The outline of the buttons are sharp, do exercise caution with the removal of the buttons.

Step 5



- Flip the controller over.
- Peel the six shiny stickers and their epoxy glue off of the controller.
- Remove the six newly revealed Phillips screws.
- Remove the acrylic panel.

To reassemble your device, follow these instructions in reverse order.