



Lenovo Thinkpad T450 SSD Replacement

The solid-state drive (or SSD) is a storage...

Written By: Justin Ogihara



INTRODUCTION

The solid-state drive (or SSD) is a storage device used to store data. SSDs are much faster than the traditional hard-disc drives (HDD) due to their physical nature. Unlike the standard HDD, an SSD does not have a physical spinning disc in the component. Current estimates show that SSDs may reach a lifespan of 10 years, but the average lifespan of a SSD is shorter.

If your Lenovo ThinkPad T450 laptop is not properly loading files or is slow to load, it may be time to replace the SSD. Follow these instructions to replace the SSD in your device.



TOOLS:

- [JIS #00 Screwdriver](#) (1)
- [iFixit Opening Tool](#) (1)



PARTS:

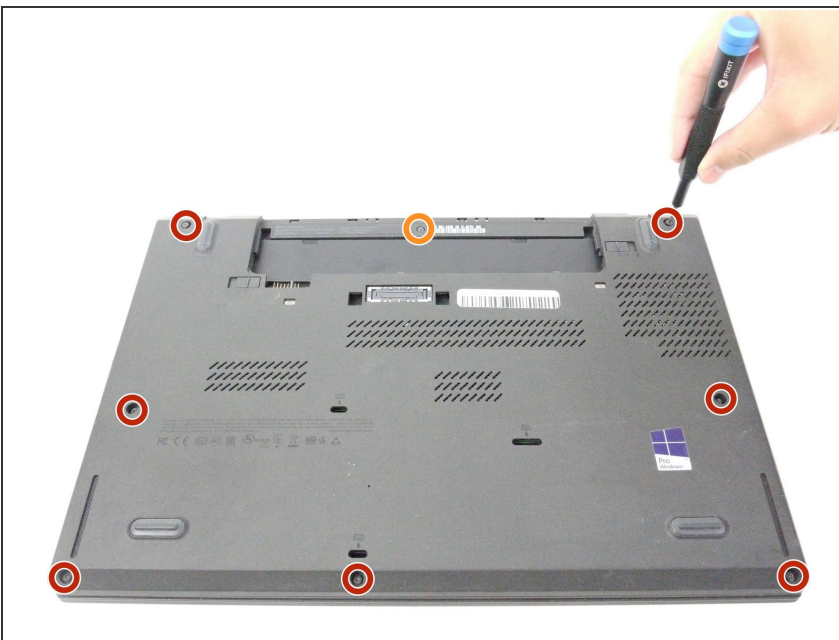
- [1 TB SSD](#) (1)
- [250 GB SSD](#) (1)
- [Crucial MX500 500 GB SSD](#) (1)
- [2 TB SSD](#) (1)

Step 1 — External Battery



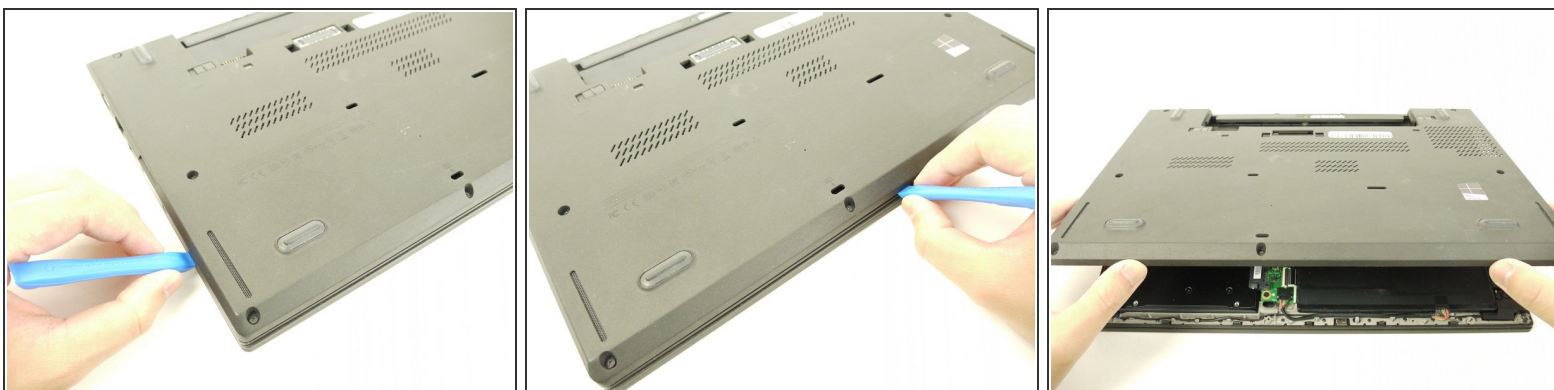
- Using your hands, slide the two locking tabs away from each other to release the battery.
- Slide the battery up and out of the device.

Step 2 — Back Cover



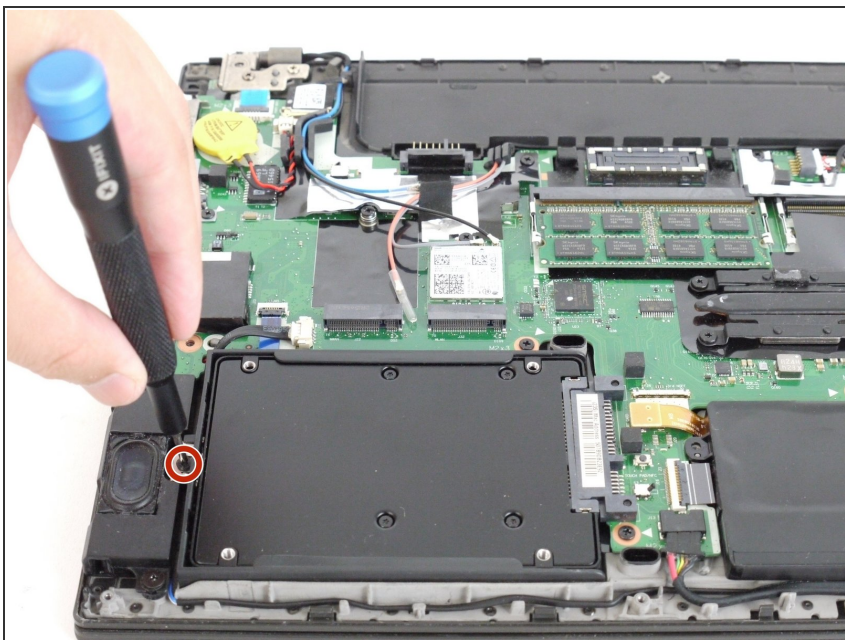
- Using the JIS #00 screwdriver, unscrew seven screws from the back cover.
 - ⓘ These screws are not removable and will remain in the back cover.
- Use the JIS #00 screwdriver to remove the single 2.8 mm screw from the back cover.

Step 3



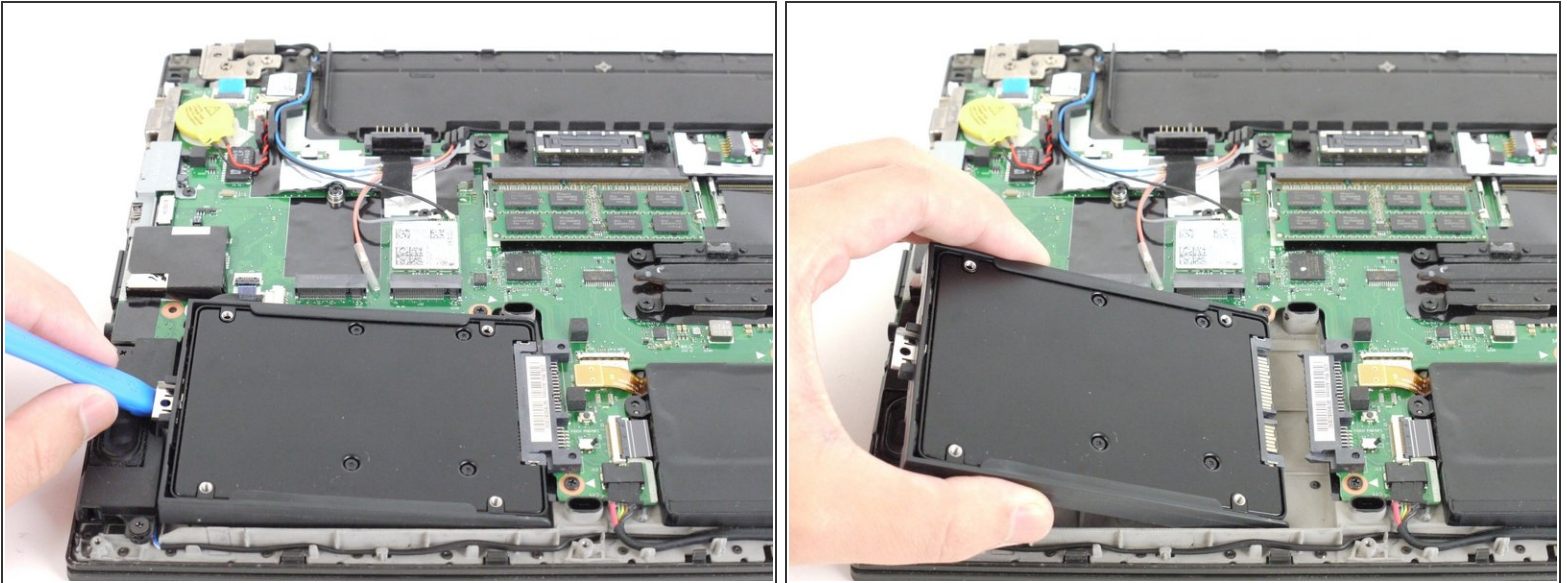
- Insert a plastic opening tool into the edges of the laptop and work your way around the edges to pry off the back cover from the device.
- Remove the back cover from the device.

Step 4 — SSD



- Using the JIS #00 screwdriver, remove the single 2.8 mm screw securing the SSD to the device.

Step 5



- Lift the SSD up and to the left and remove it from the device.

To reassemble your device, follow these instructions in reverse order.

Take your e-waste to an [R2 or e-Stewards certified recycler](#).