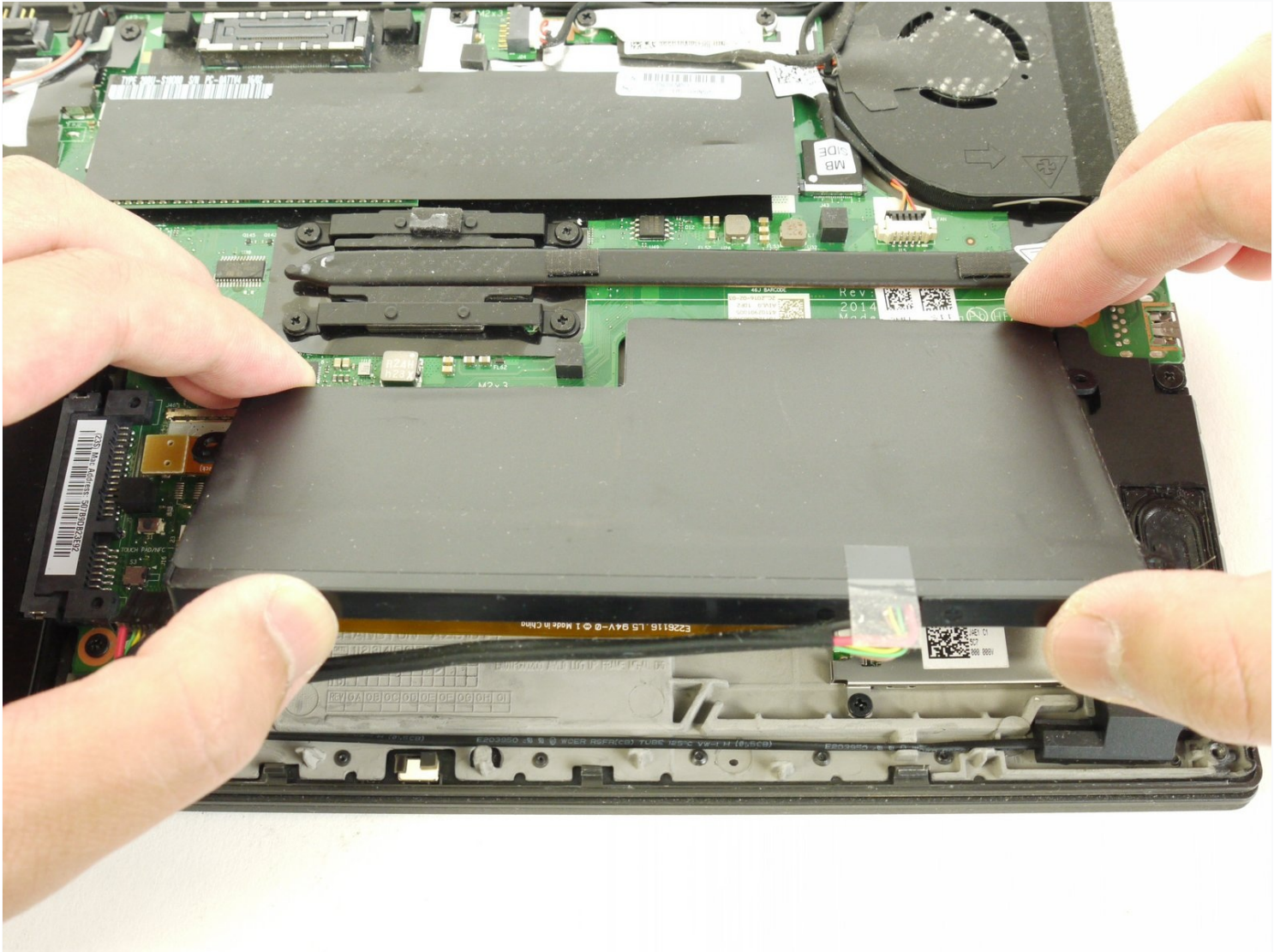




Lenovo Thinkpad T450 Internal Battery Replacement

Laptop batteries may become faulty after two...

Written By: Justin Ogihara



INTRODUCTION

Laptop batteries may become faulty after two years of use. A functioning battery is essential to an efficient laptop and is crucial to allowing the device to work as intended, which is as a portable computer. Old laptop batteries can be slow and not hold as much of a charge as a newer battery.

If you've owned your laptop for longer than two years, it may be time to replace the battery. Replacing the **internal** battery in the Lenovo ThinkPad T450 is a little more complex than replacing the external battery. Follow this guide to replace the **internal** battery in your laptop.

For your safety, discharge your battery below 25% before disassembling your device. This reduces the risk of a dangerous thermal event if the battery is accidentally damaged during the repair. If your battery is swollen, [take appropriate precautions](#).



TOOLS:

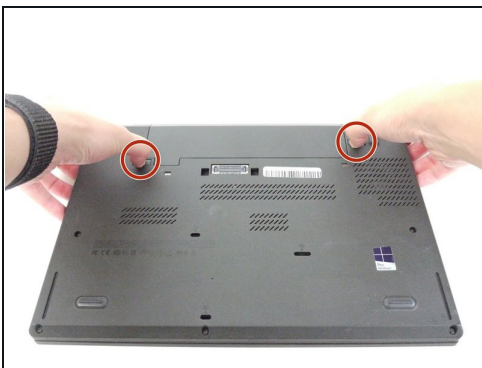
JIS #00 Screwdriver (1)
iFixit Opening Tool (1)



PARTS:

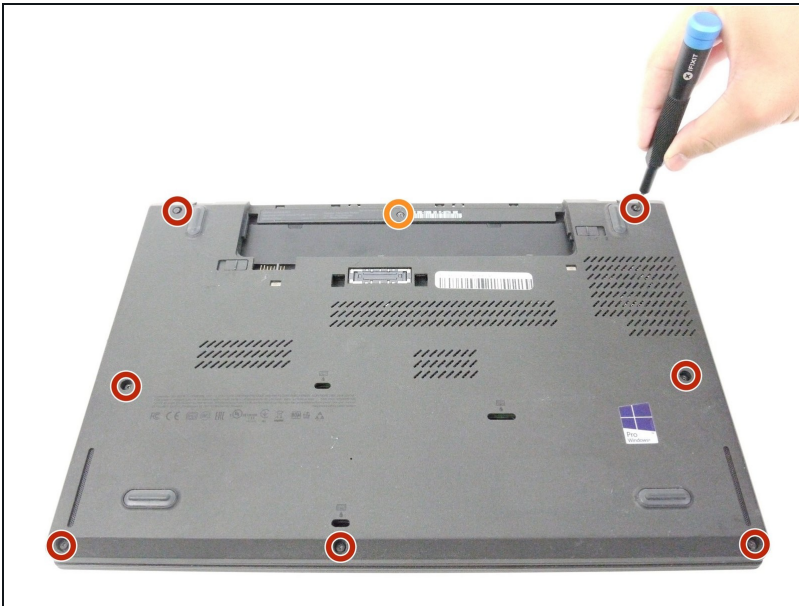
Lenovo ThinkPad Internal T440 / T450 /
T460 / X240 / X250 / X270 Battery (1)

Step 1 — External Battery



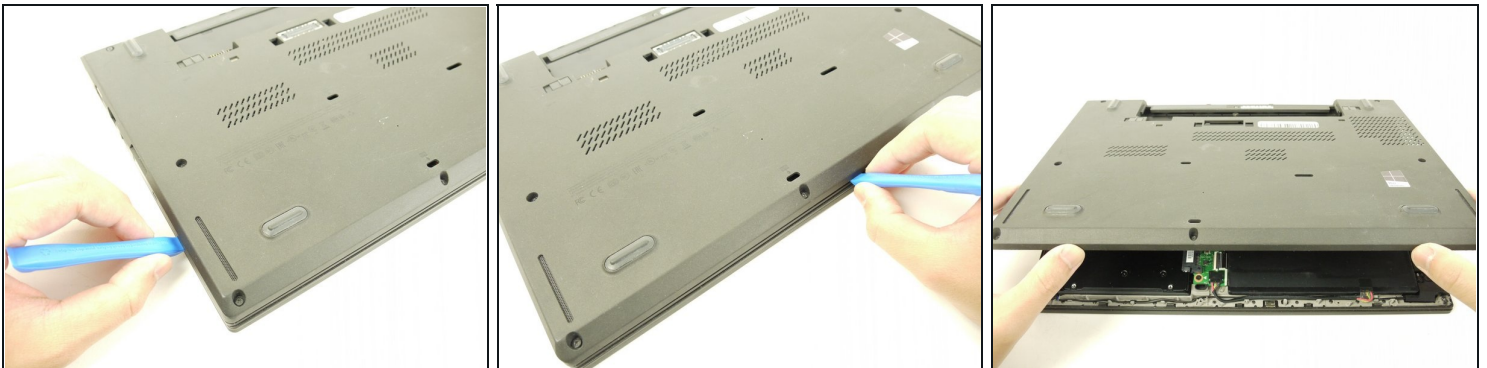
- Using your hands, slide the two locking tabs away from each other to release the battery.
- Slide the battery up and out of the device.

Step 2 — Back Cover



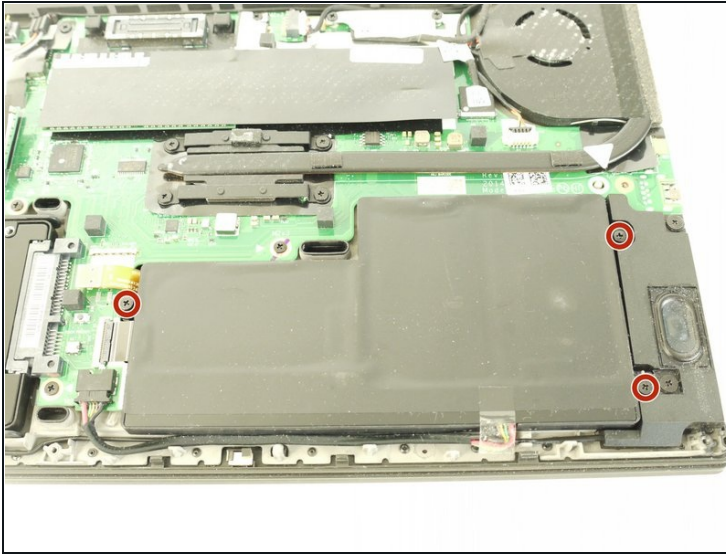
- Using the JIS #00 screwdriver, unscrew seven screws from the back cover.
- ❗ These screws are not removable and will remain in the back cover.
- Use the JIS #00 screwdriver to remove the single 2.8 mm screw from the back cover.

Step 3



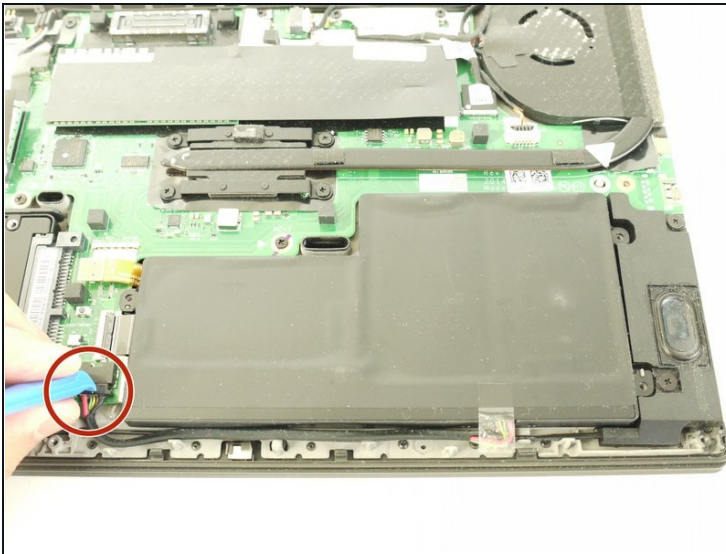
- Insert a plastic opening tool into the edges of the laptop and work your way around the edges to pry off the back cover from the device.
- Remove the back cover from the device.

Step 4 — Internal Battery



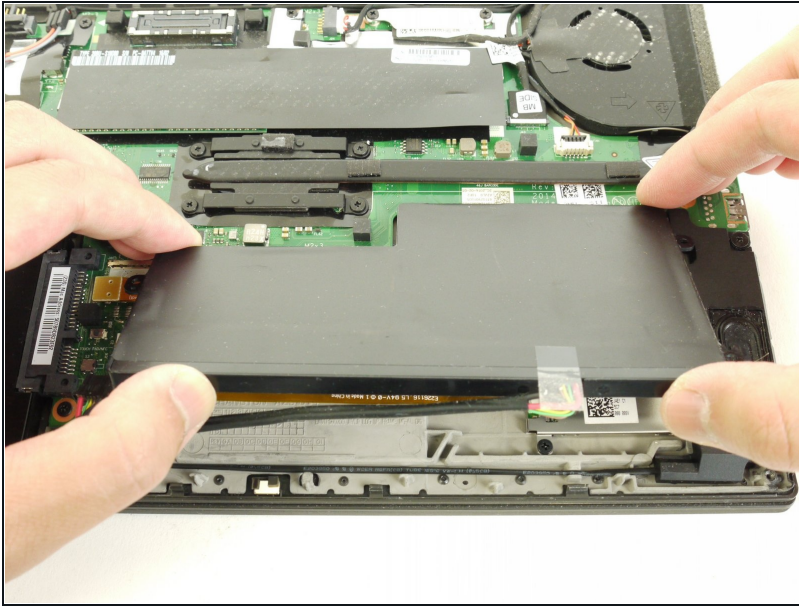
- Using the JIS #00 screwdriver, remove the three 2.8 mm screws.

Step 5



- Disconnect the battery cable from the motherboard using the plastic opening tool.

Step 6



- Lift up and remove the battery from the device.

To reassemble your device, follow these instructions in reverse order.

Take your e-waste to an [R2 or e-Stewards certified recycler](#).

For optimal performance, after completing this guide, [calibrate your newly installed battery](#).