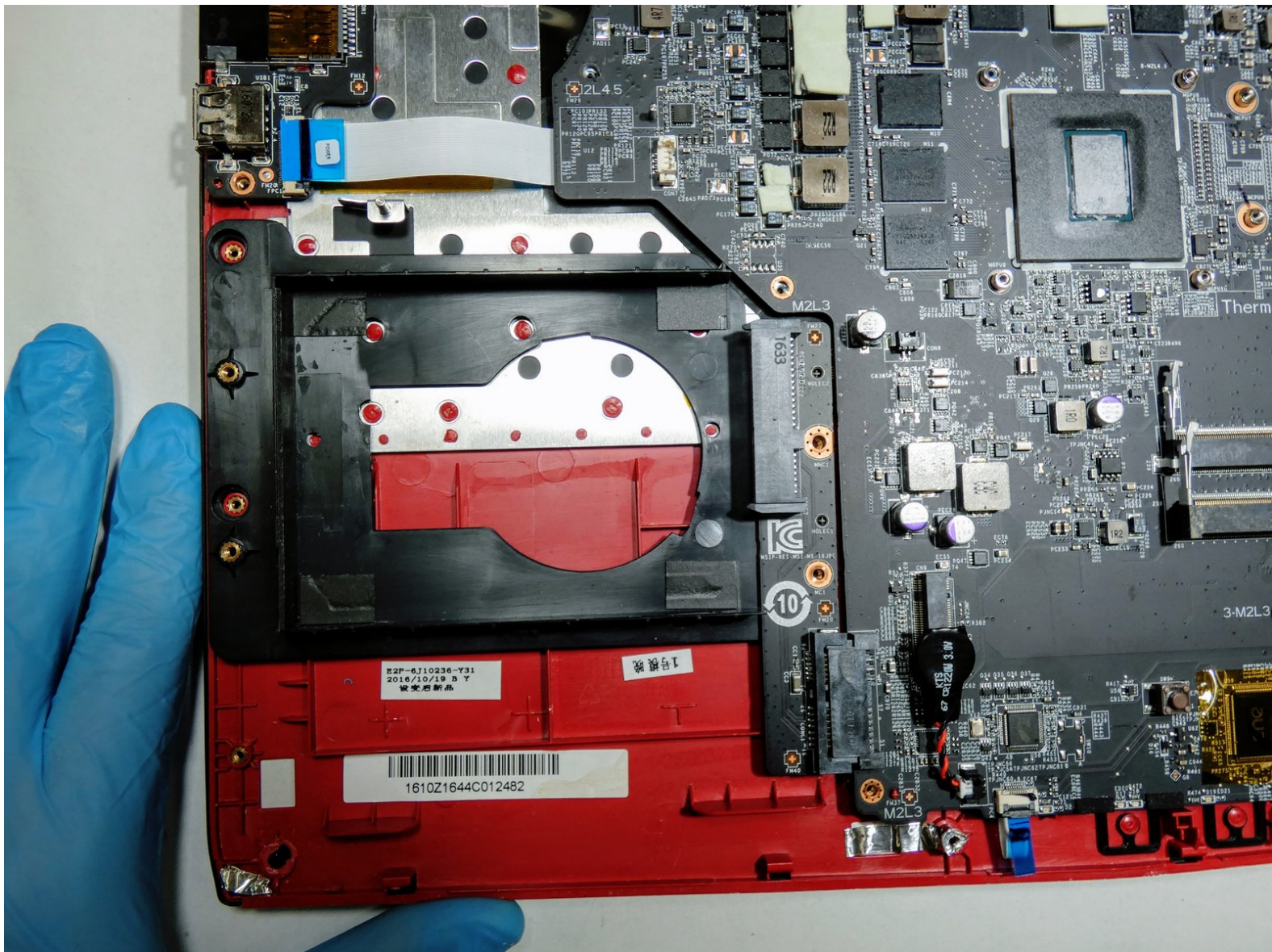




MSI GP62MVR 6RF Leopard Pro Hard Drive Replacement

This guide will show you how to replace the hard drive in the MSI GP62MVR 6RF Leopard Pro laptop.

Written By: Justin Ogihara



This document was generated on 2021-06-16 09:19:38 AM (MST).

INTRODUCTION

There are many signs of a corrupted hard drive. Some of those signs may include and are not limited to: not able to load files, images won't properly load, cannot access files, cannot save files, etc. If your MSI GP62MVR 6RF Leopard Pro is experiencing any of these symptoms, it may be time to replace the hard drive. Follow these instructions to replace the hard drive in your device.

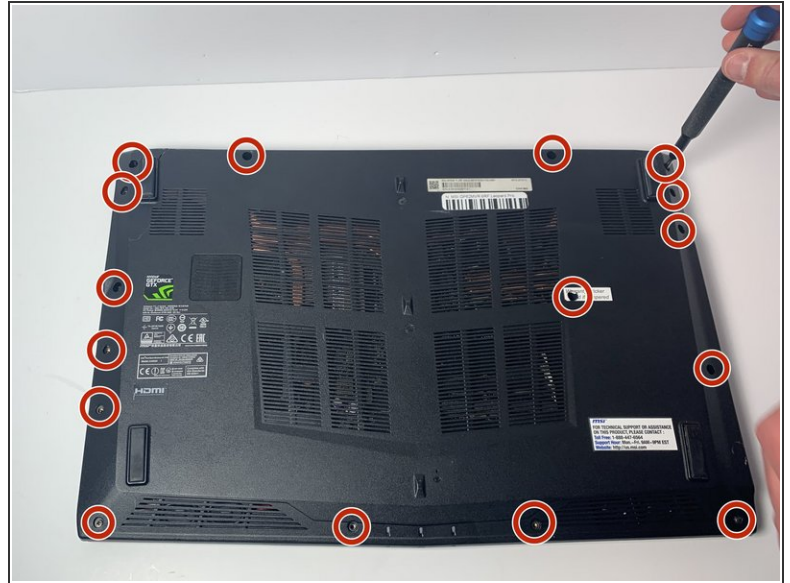
*At the time of creating this guide, the hard drive did not come equipped with the device.



TOOLS:

- [Jimmy](#) (1)
 - [Phillips #0 Screwdriver](#) (1)
-

Step 1 — Bottom Cover



- Place the laptop upside down.
- Remove the sixteen 5.5 mm screws with a Phillips #0 screwdriver.

Step 2




- Use the Jimmy tool to evenly pry loose the bottom cover.
- Ensure that all sides are detached from the plastic hinging before attempting to remove the bottom cover.

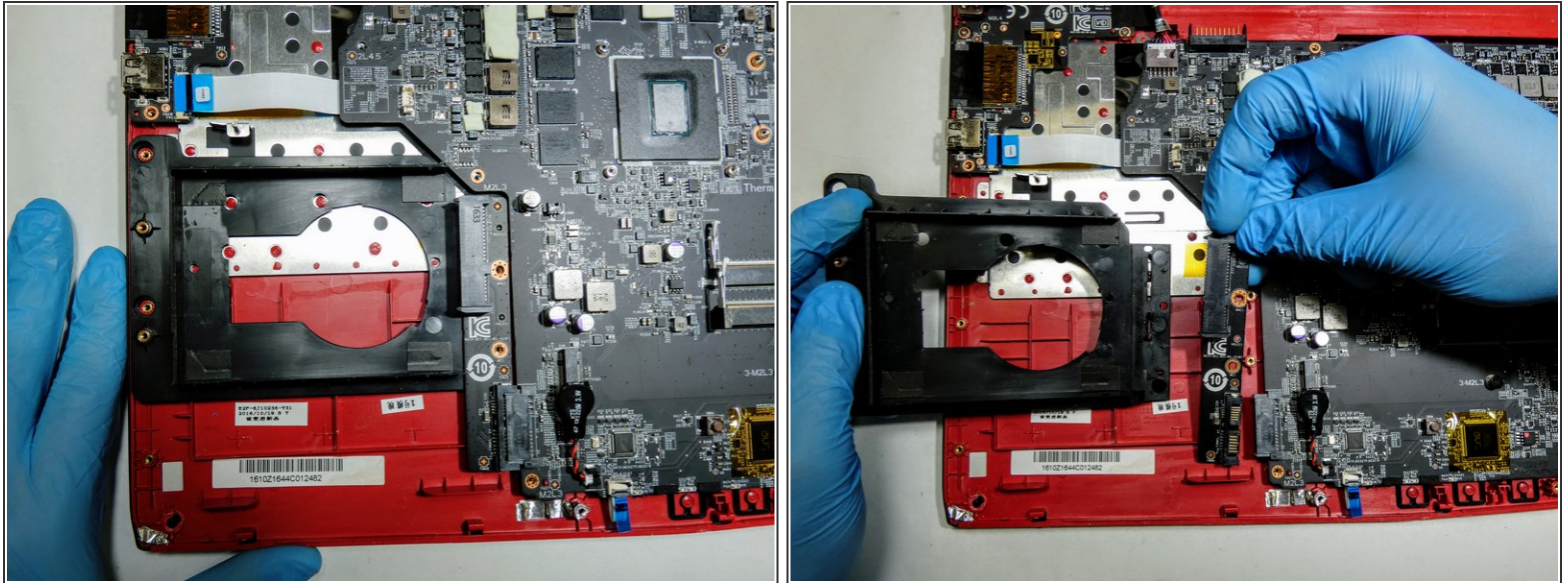
Step 3



- Remove the back cover.

 Touching circuitry could damage components or result in personal shock; it is recommended that you now wear latex gloves to prevent both issues.

Step 4 — Hard Drive



- Disconnect the hard drive and remove the hard drive from the device.

To reassemble your device, follow these instructions in reverse order.