



Kushlan Cement Mixer 600DDS 2014 On/Off Switch Replacement

How to replace the on/off switch on a 2014 Kushlan cement mixer model 600DDS.

Written By: Sam Omiotek



INTRODUCTION

Follow this guide to remove or replace the on/off switch on a 2014 Kushlan cement mixer model 600DDS.

To prevent electric shock, leave the device unplugged for 20 minutes to allow the capacitor to discharge before you begin.



TOOLS:

- [13mm Socket](#) (1)
- [Socket Wrench](#) (1)
- [Phillips #3 Screwdriver](#) (1)
- [6-in-1 Screwdriver](#) (1)
- [Large Needle Nose Pliers](#) (1)



PARTS:

- [Kushlan On/Off Switch DDMA-26](#) (1)

Step 1 — Remove the motor cover bolts



⚠ Before you begin, ensure the power cord is unplugged and the power switch is in the **OFF** position.

- Use a 13 mm socket to remove the two bolts securing the motor cover to the frame.

Step 2 — Remove the motor cover



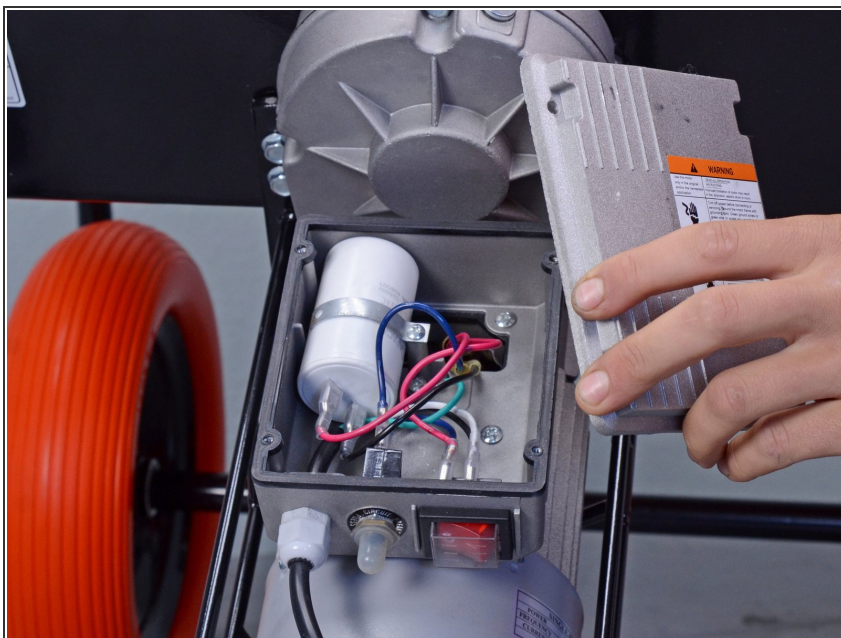
- Remove the motor cover.

Step 3 — Remove the electrical panel



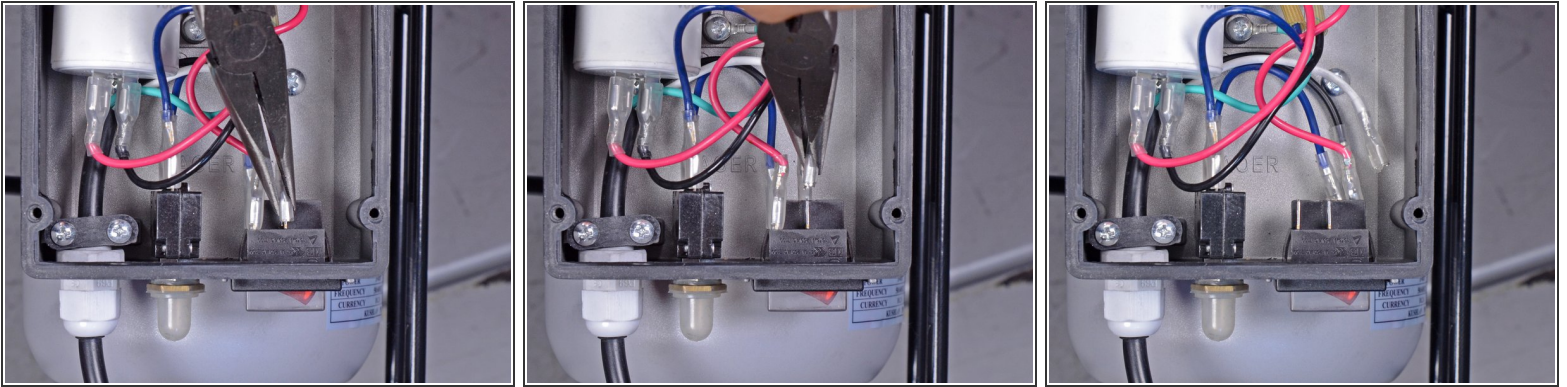
- Use a Phillips screwdriver to remove the four screws securing the electrical panel.

Step 4 — Remove the electrical panel



- Remove the electrical panel.

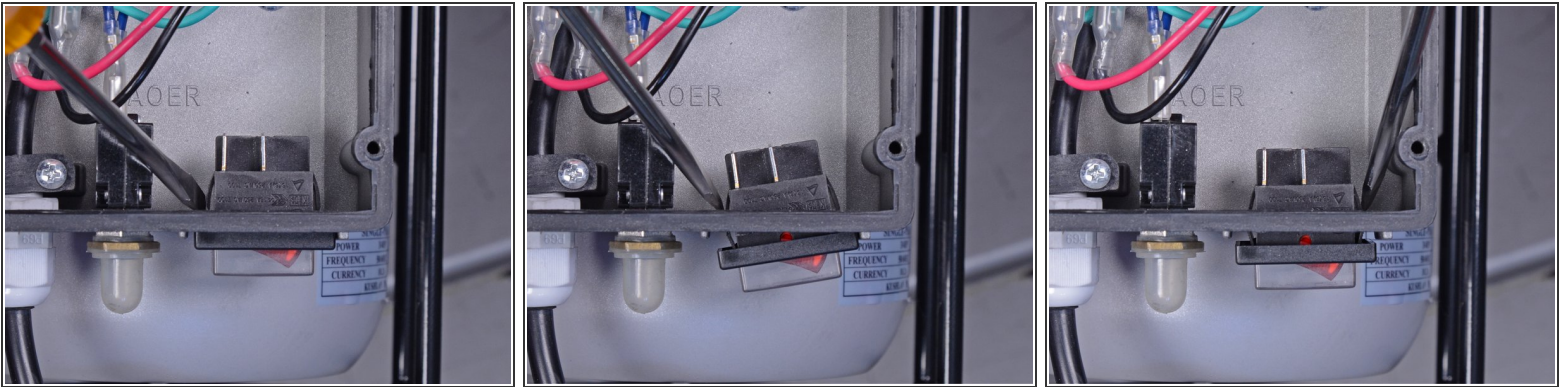
Step 5 — Remove the on/off switch



- Use a pair of needle-nose pliers to disconnect the four wires from the back of the on/off switch.

☞ During reassembly, ensure the wires are connected back into their [original locations](#) and the on/off switch is not upside-down.

Step 6



- Use a flathead screwdriver to press the sides of the on/off switch through the opening in the electrical box.

Step 7



- Remove the on/off switch.

To reassemble your device, follow these instructions in reverse order.