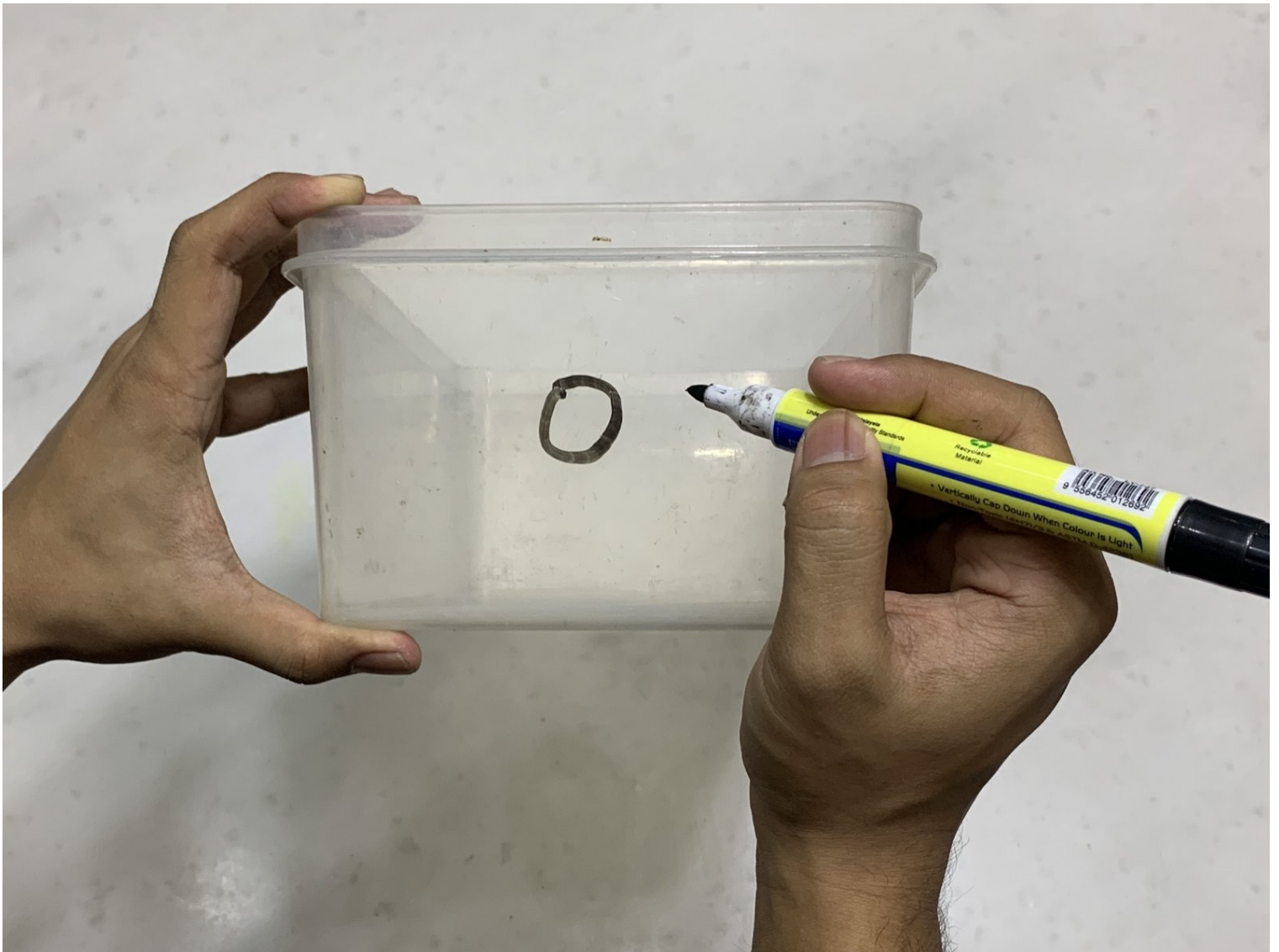




# Aquarium Top Filter Box Replacement

Use this guide to replace a cracked or broken...

Written By: Seaaf



## INTRODUCTION

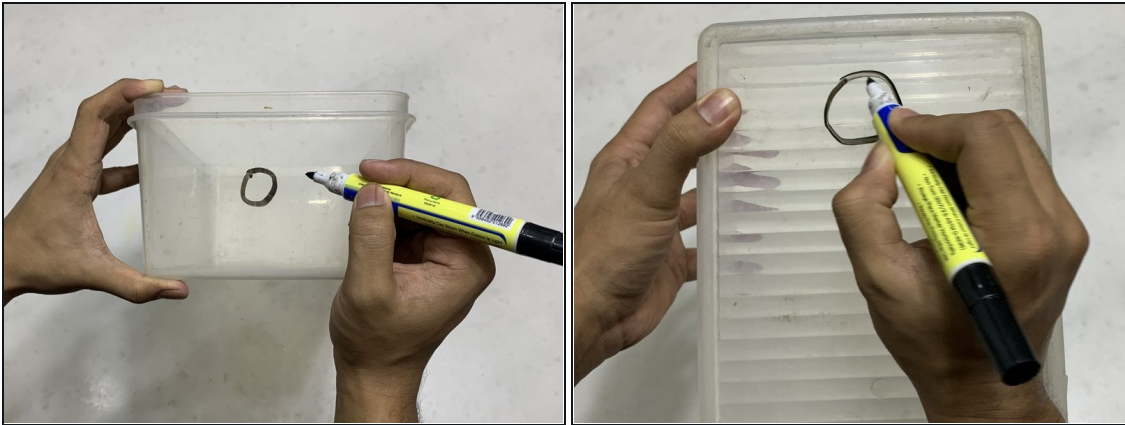
Use this guide to replace a cracked or broken filter box with a regular plastic box. This guide will provide you with the instructions and tools to repair your aquarium top filter. The added benefit you can achieve from this guide is that you can customize the filtration system best suited for your aquarium. The tools listed in this guide are easily accessible and can be found online or in any hardware store.

---

### TOOLS:

- Teflon tape (1)
  - Aquarium Silicone glue (1)
  - Soft PVC pipe (1)
  - Waterproof Plastic Box (1)
  - Black Sharpie Marker (1)
  - Precision Utility Knife (1)
- 

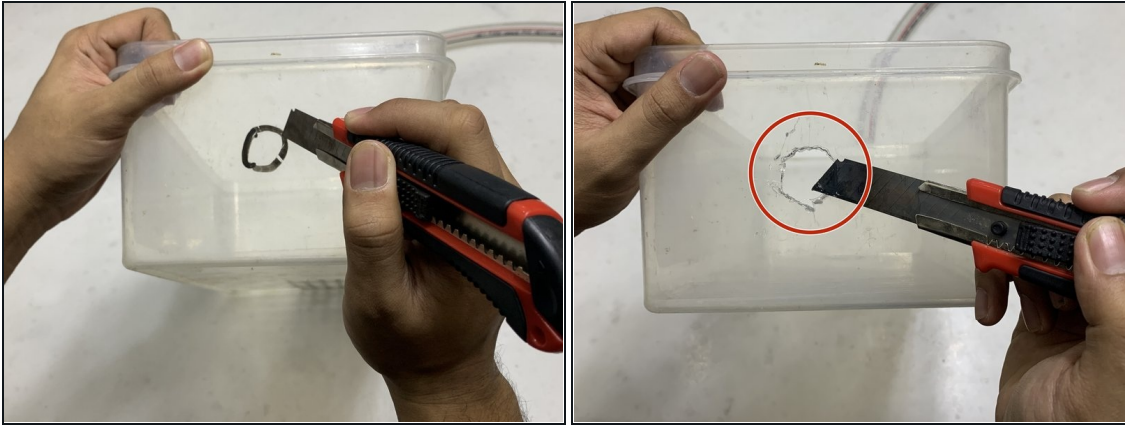
### Step 1 — Aquarium Filter Box



- Using a black sharpie marker, mark the box for accurate holes.

- ① Make sure the hole is a little bit smaller than the soft PVC pipe.

## Step 2



- Use the utility knife to cut a hole in the marked position to attach the pipe.

⚠ Be very careful as the box is difficult to cut.

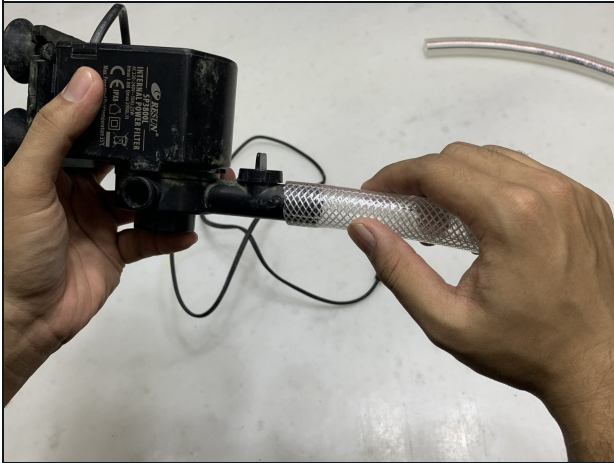
## Step 3



- Using the same utility knife, make a hole in the bottom of the plastic box for the water to come out.

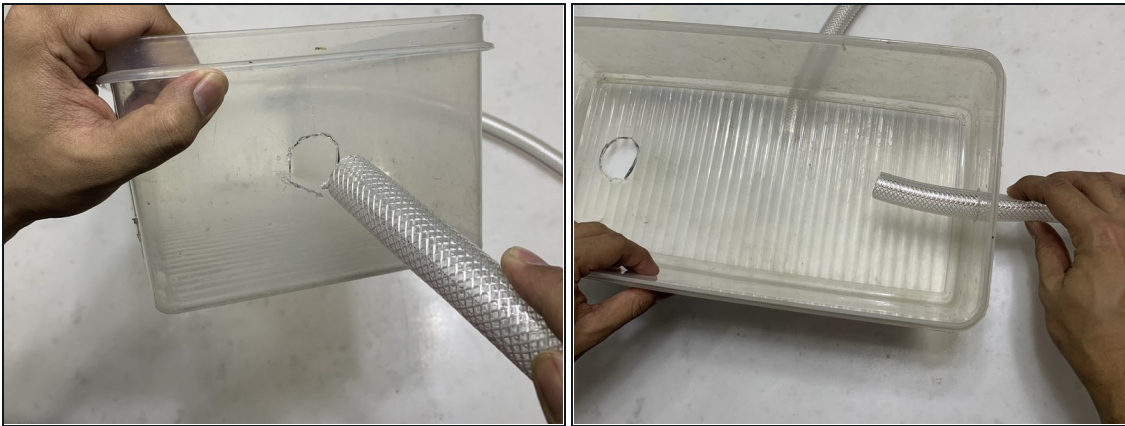
⚠ Be very careful as the box is difficult to cut.

#### Step 4



- Attach the soft PVC pipe with the aquarium powerhead.
- ⓘ Make sure it is properly connected.

#### Step 5



- Insert the soft PVC pipe in the plastic box.

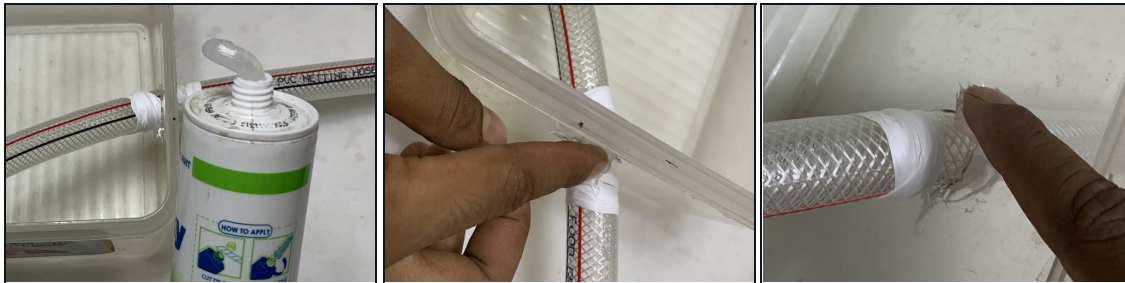
#### Step 6



- With a teflon tape properly wrap the soft PVC pipe for no leakage of water.



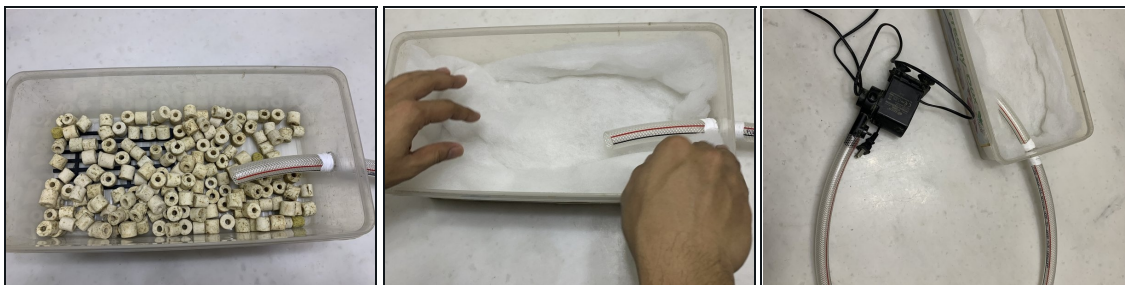
## Step 7




- Use aquarium-safe silicone glue to seal the soft PVC pipe with the plastic box.

 Make sure to let the silicone glue dry for 30 minutes.

## Step 8



- Add your desired filter media best suited for your aquarium.
- Finally, submerge the waterpump in water and adjust the waterflow.

 Be careful where you place the inlet of the filter, so no organisms or substrate get sucked in and die inside or clog it. If needed you can put some filter floss or a sponge on the inlet to prevent the above.

To reassemble your device, follow these instructions in reverse order.