



How to Fix an Overwound Music Box

The extensive use of a music box and winding...

Written By: Gaurangi Sawant



INTRODUCTION

The extensive use of a music box and winding the main spring excessively will lead it to fail. This failure is caused because the music box mechanism gets jammed, and then, you are no longer able to enjoy its beautiful tunes.

However, the music box that you have loved and cherished over the years can still be salvaged. This guide will help restore your music box to mint condition with some easy-to-do steps that will assist the restoration of the mechanism.

With minimal effort your music box will resume entertaining you with its beautiful tunes.

TOOLS:

Phillips #0 Screwdriver (1)

WD-40 (1)

Toothpick (1)

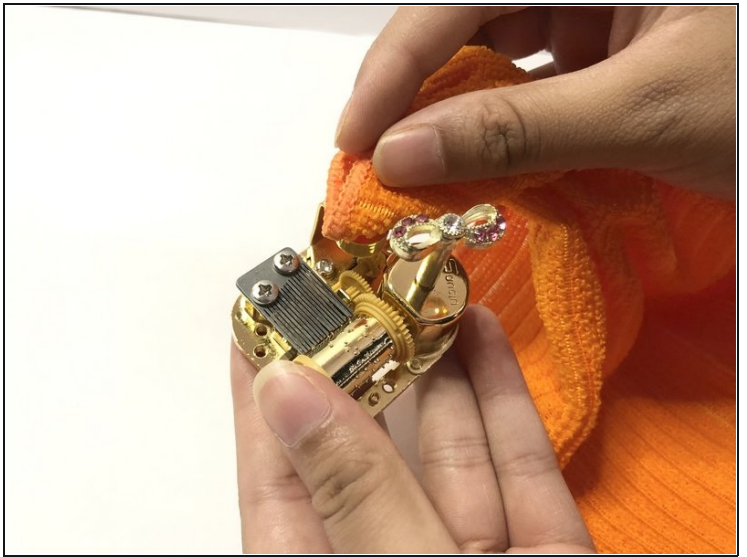
Microfiber Cleaning Cloths (1)

Step 1 — How to Fix an Overwound Music Box



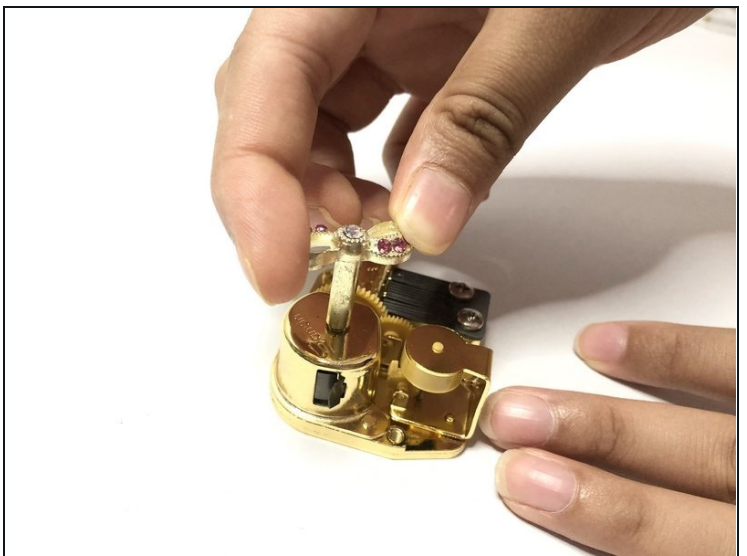
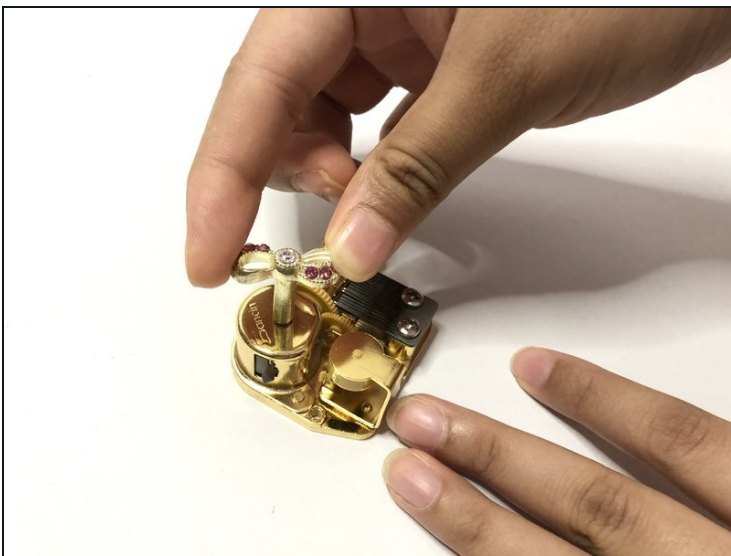
- Use a Phillips #0 screwdriver to unscrew the screws at the base of the music box.
- Remove the outer casing and isolate the mechanism.

Step 2



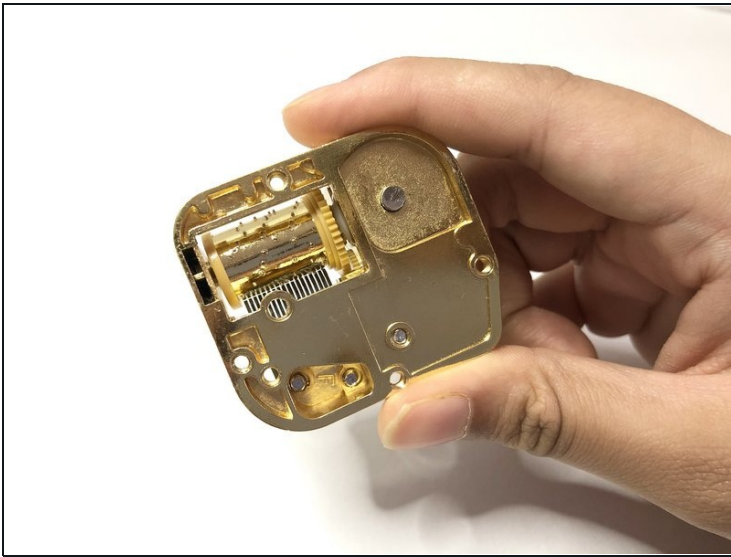
- Gently wipe the mechanism with a cloth to get rid of any settled dust particles.
 - ① Make sure you wipe all the open and accessible surfaces of the mechanism.
- ⚠ Be extremely careful when cleaning the comb and the drum. The comb is delicate and can break when too much pressure is applied. The threads of the cloth can get stuck in the pins of the drum.

Step 3



- Slowly turn the winding key in the opposite direction to release the tension built-up in the spring.

Step 4



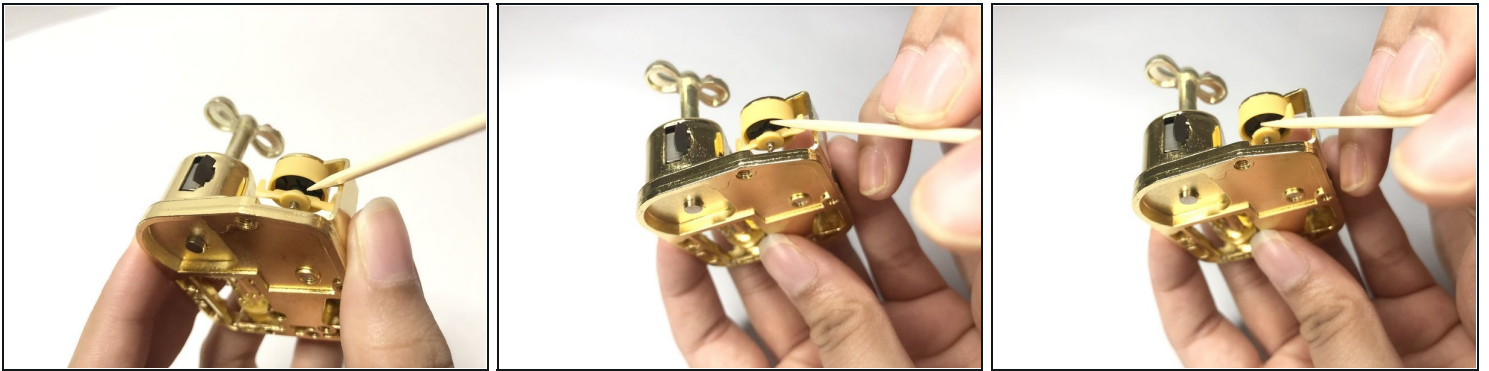
- Tap the base of the mechanism a few times to release the governor assembly.

Step 5



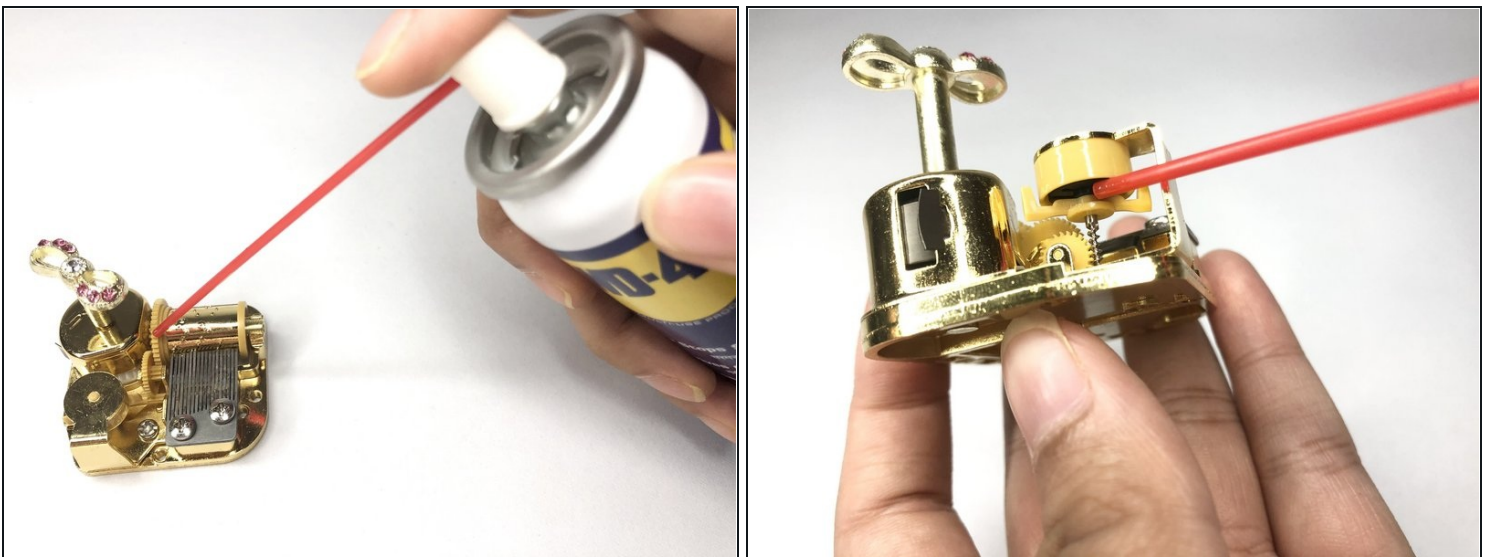
- Gently push the governor fan with your fingertip to assist its spin movement.

Step 6



- Use a toothpick to reach the flywheel.
- Push the toothpick forward to spin the flywheel and assist its rotation.

Step 7



- Using a narrow nozzle, spray some WD-40 on the spring housing gear and the governor.
- ① The nozzle is pointed at the spring housing gear in the first photo, and in the second photo the nozzle is pointed at the governor.
- ① In case you don't have a narrow nozzle, you can add a few drops of WD-40 using any other small quantity dropper.

Step 8



- ★ Keep the music box playing for a few minutes after it restarts.

To reassemble your device, follow these instructions in reverse order.