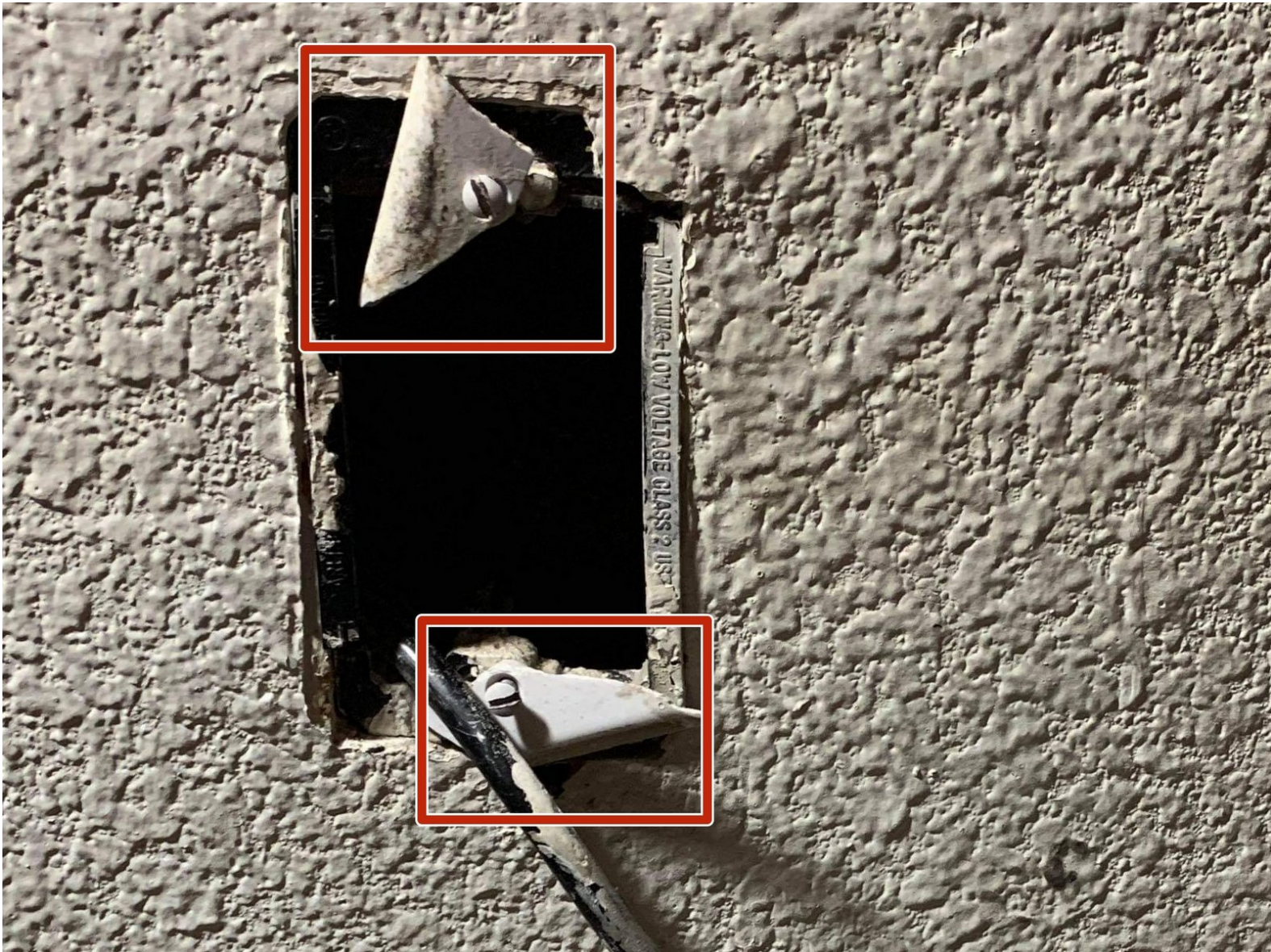




# Wall Outlet Cover Replacement

A household repair guide demonstrating how to cover an outlet hole.

Written By: Leydi Navarrete



## INTRODUCTION

This guide will help cover a left undone outlet hole or if you are putting a new outlet cover. This guide will help prevent a hazardous zone for children, especially for children under three years old, who can easily put the cord in their mouth or get their hand stuck inside the wall. The guide will also prevent any bugs or mice to get in and out of the hole and it would be best if the hole would be covered up with a proper blank wall outlet cover and this guide is here to help you do that.

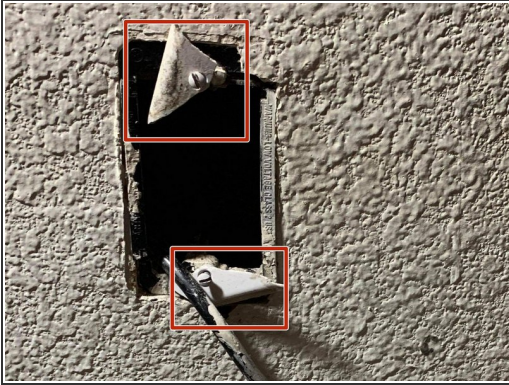


### TOOLS:


- [Wall Outlet Cover](#) (1)  
Blank Nylon Plate
  - [Flathead 3/32" or 2.5 mm Screwdriver](#) (1)
-



## Step 1 — Wall Outlet Cover




- Remove any hazardous pieces from previous cover.

 Be sure to remove the two flathead screws to remove any debris, rather than trying to pull off the sharp pieces.

## Step 2



- Insert any cable or cables that may be hanging out inside of the wall hole.

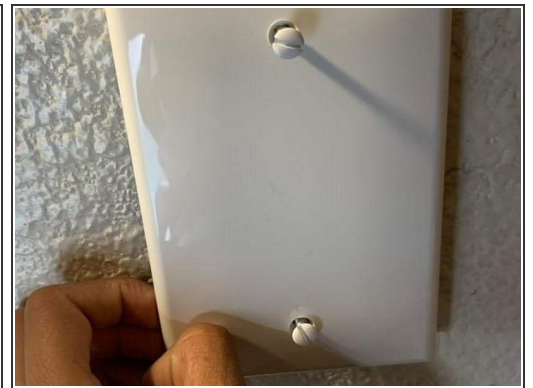
 Making a loop in the cable might be helpful to push it inside the wall.

### Step 3



- Insert two screws into the holes of the new wall cover.

### Step 4



- Line up the screws in the plate with the screw holes in the wall.
- Tighten the screws slightly with your hands to ensure that both screws have found the proper holes.
- ⓘ Once the screws have been tightened enough to stay in the holes, they should hold the outlet cover in place.

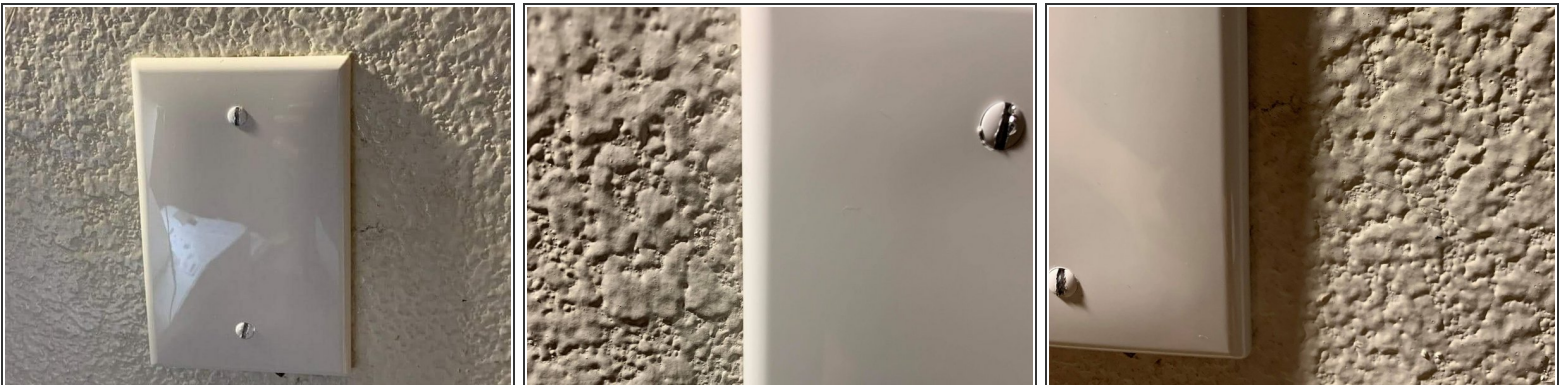


## Step 5



- Tighten the two screws with a flathead screwdriver.

## Step 6



- Double check that the wall cover plate does not have a gap, and it is completely attached to the wall.
- If any gap is detected, push the plate to the wall and continue to tighten the screws until the gap completely closes.

To reassemble your device, follow these instructions in reverse order.