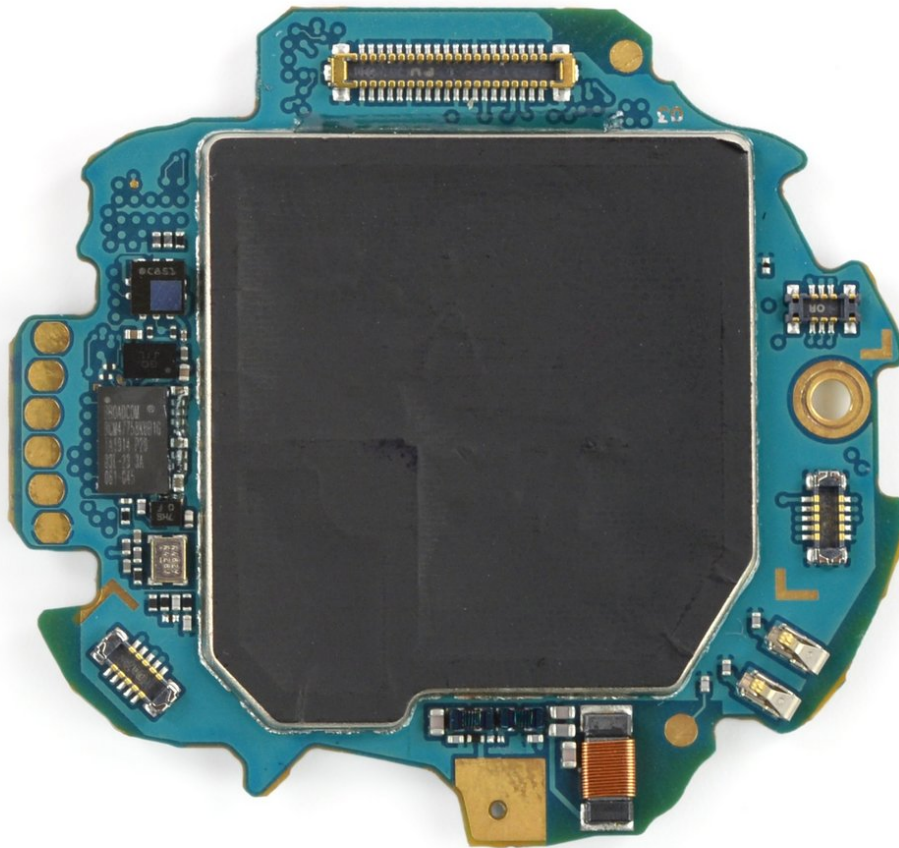




Samsung Watch Active Motherboard Replacement

How to replace a defective motherboard in your Samsung Galaxy Watch Active.

Written By: Tobias Isakeit



INTRODUCTION

Use this guide to replace a defective motherboard in your Samsung Galaxy Watch Active.



TOOLS:

- [Tri-point Y00 Screwdriver](#) (1)
 - [iFixit Opening Tools](#) (1)
 - [Spudger](#) (1)
 - [iFixit Opening Picks set of 6](#) (1)
 - [Phillips #00 Screwdriver](#) (1)
-

Step 1 — Turn off the watch



- Turn off the Galaxy Watch Active by pushing and holding the bottom button for approximately 3 seconds. You should feel a short vibration.
- When the "Power off" symbol appears tap the center of the screen to make it shut down. You should feel a longer vibration for confirmation.

Step 2 — Remove the rear screws



- Use a Tri-point Y00 screwdriver to remove the four 4 mm-long screws on the back of the watch.

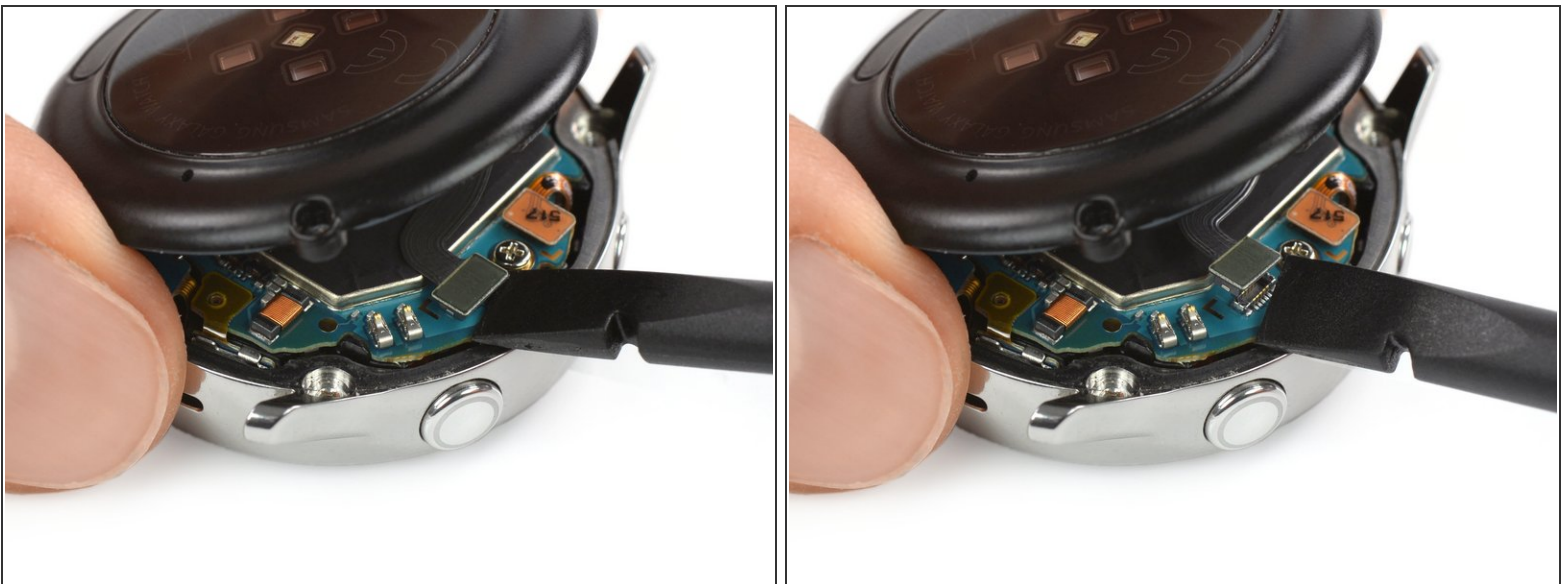
Step 3 — Separate the back cover from the housing



- Use an opening tool and place it between the plastic back cover and the metal housing near the buttons.
- Push the tip of the opening tool into the gap to separate the back cover from the housing.

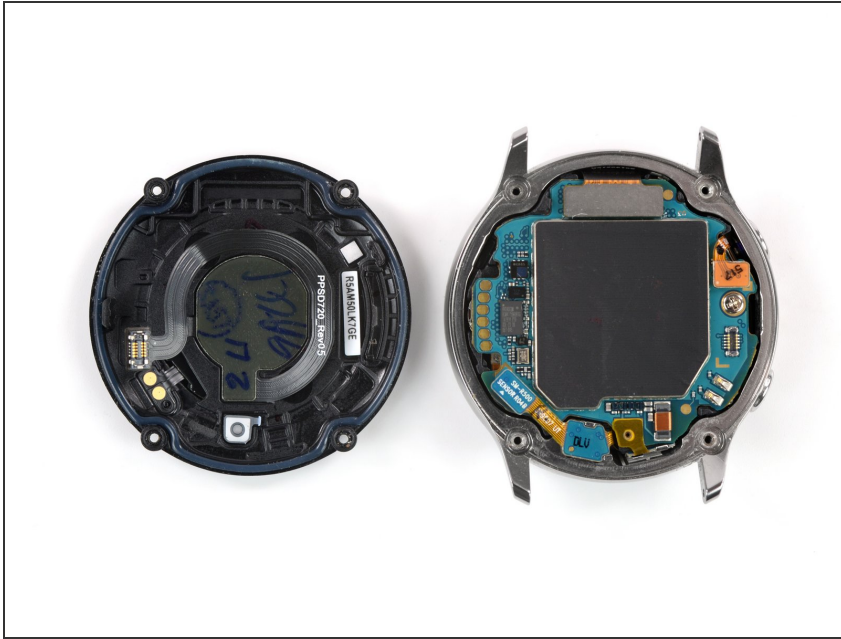
⚠ Don't remove the back cover all the way yet. There is a cable connecting it to the motherboard.

Step 4 — Disconnect the sensor array



- Carefully lift the back cover approximately 2 cm to access the sensor array connector near the two buttons.
- Use a spudger to disconnect the sensor array from the motherboard.

Step 5 — Remove the back cover



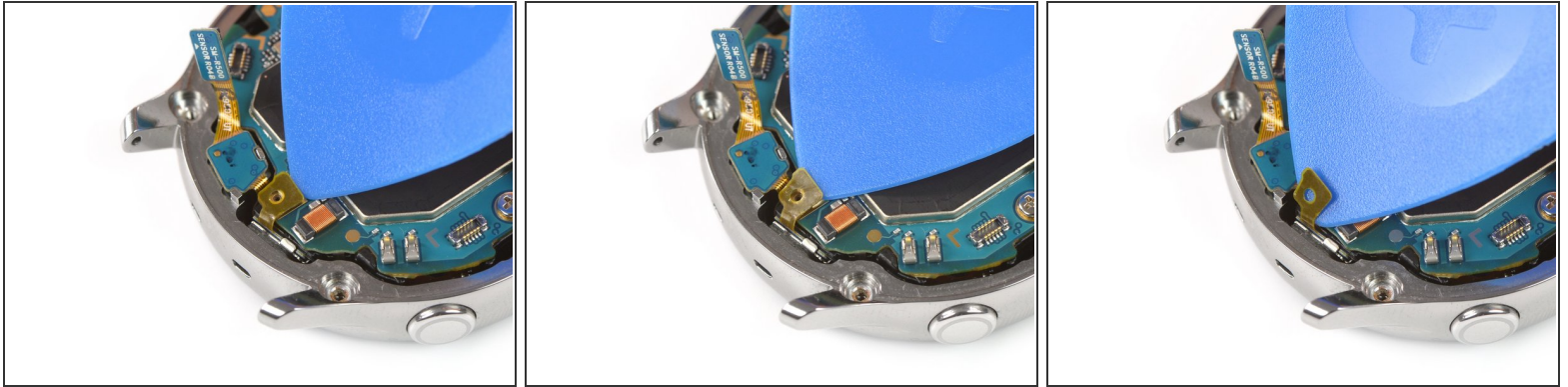
- Remove the back cover.

Step 6 — Disconnect the motherboard



- Use the flat end of a spudger to disconnect the display assembly, the microphone and pressure sensor array, and side button.

Step 7 — Undo the mic tape



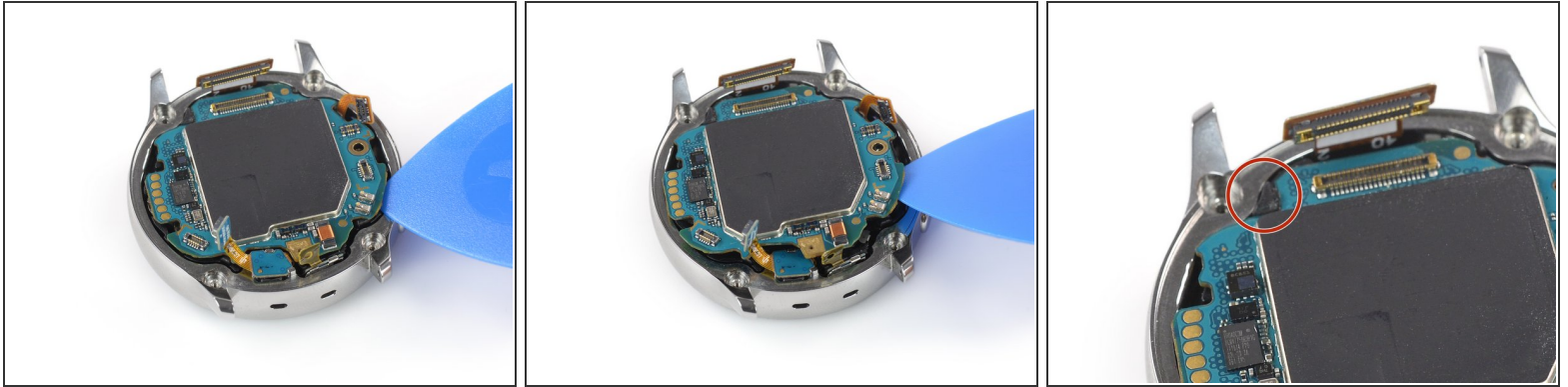
- Use an opening pick to peel back the thin tape belonging to the microphone array.
- ☒ When re-assembling make sure this tape properly sticks to the motherboard by pressing it down with the flat end of a spudger.

Step 8 — Remove the motherboard screw



- Use a Phillips screwdriver to remove the 4.4 mm-long screw holding the motherboard in place.

Step 9 — Loosen the motherboard



- Use an opening pick to loosen the motherboard from the core assembly.

⚠ The plastic tab holding the motherboard in place is fragile, so don't lift the motherboard up until it has cleared the tab.

Step 10 — Remove the motherboard



- Slide the motherboard out from under the plastic tab to remove it.

Compare your new replacement part to the original part—you may need to transfer remaining components or remove adhesive backings from the new part before installing.

To reassemble your device, follow these instructions in reverse order.

Take your e-waste to an [R2 or e-Stewards certified recycler](#).

Repair didn't go as planned? Try some [basic troubleshooting](#), or ask our [Answers community](#) for help.

