



# Opening the Samsung Galaxy Watch Active

How to open the Samsung Galaxy Watch Active for repairs.

Written By: Tobias Isakeit



# INTRODUCTION

Use this guide to open the Samsung Galaxy Watch Active for repairs or inspection.

---

## TOOLS:

- [Tri-point Y00 Screwdriver](#) (1)
  - [iFixit Opening Tools](#) (1)
  - [Spudger](#) (1)
-

## Step 1 — Turn off the watch



- Turn off the Galaxy Watch Active by pushing and holding the bottom button for approximately 3 seconds. You should feel a short vibration.
- When the "Power off" symbol appears tap the center of the screen to make it shut down. You should feel a longer vibration for confirmation.

## Step 2 — Remove the rear screws



- Use a Tri-point Y00 screwdriver to remove the four 4 mm-long screws on the back of the watch.

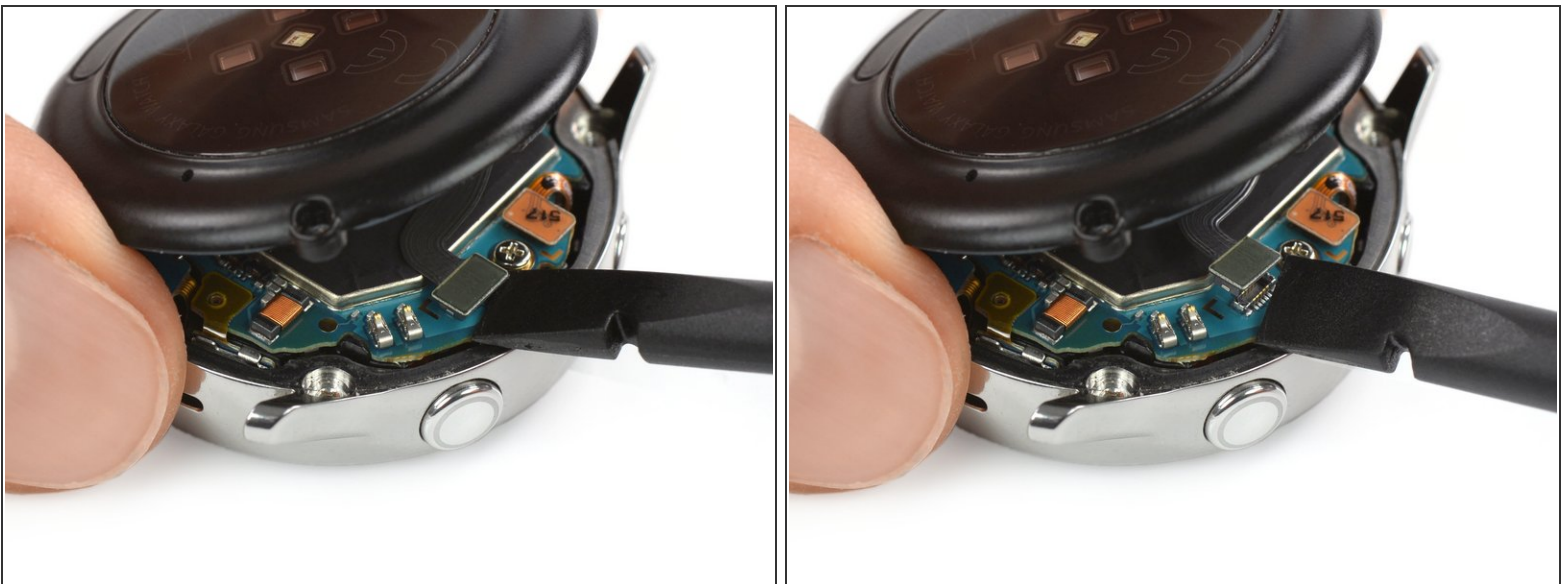
### Step 3 — Separate the back cover from the housing



- Use an opening tool and place it between the plastic back cover and the metal housing near the buttons.
- Push the tip of the opening tool into the gap to separate the back cover from the housing.

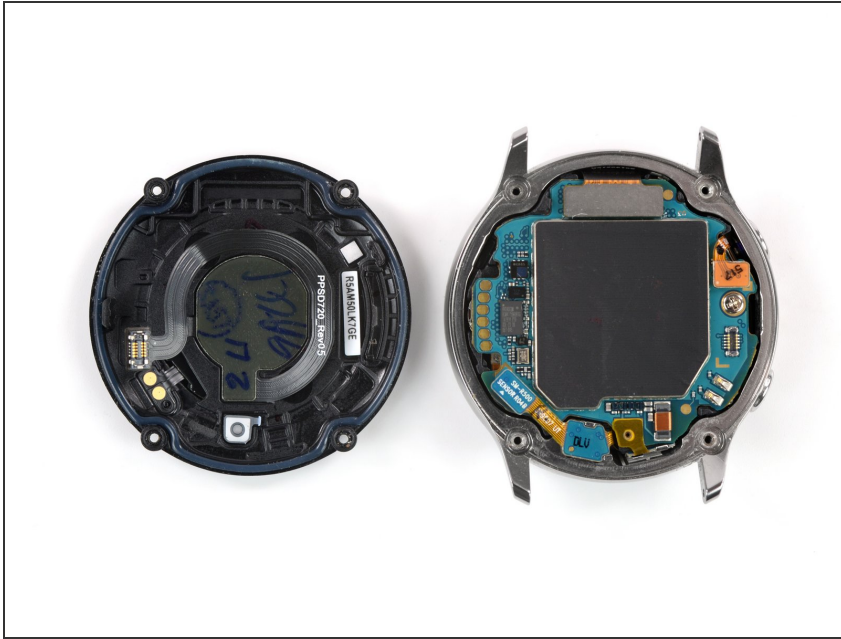
⚠ Don't remove the back cover all the way yet. There is a cable connecting it to the motherboard.

### Step 4 — Disconnect the sensor array



- Carefully lift the back cover approximately 2 cm to access the sensor array connector near the two buttons.
- Use a spudger to disconnect the sensor array from the motherboard.

## Step 5 — Remove the back cover



- Remove the back cover.

To reassemble your device, follow these instructions in reverse order.