



How to Sharpen Troy-Bilt TB110 Lawnmower Blades

How to sharpen the blades on your Troy-Bilt TB110 Lawnmower.

Written By: Andrew DePari



INTRODUCTION

If your lawn mower has stopped cutting like it once did, you might need to follow this guide. You can remove your lawn mower blade and sharpen it within 15 minutes.

Cutting grass with dull blades is inefficient and can lead to lawn disease, discoloration or portions of the grass dying.

As with anything sharp, use caution when performing this guide to avoid injury and follow all safety procedures. Also, before starting this guide, be sure to remove the spark plug to ensure that the machine does not turn on during the repair.



TOOLS:

- [Saran Wrap](#) (1)
 - [Metal File](#) (1)
 - [Chisel Scraper](#) (1)
 - [Wire Brush](#) (1)
 - [5/8" Wrench](#) (1)
-

Step 1 — How to Sharpen Troy-Bilt TB110 Lawnmower Blades



- Disconnect the spark plug wire.

⚠ This step is critical to avoid an accidental startup since we are working on the blade.

Step 2



- Put saran wrap on the inside of the gas cap.

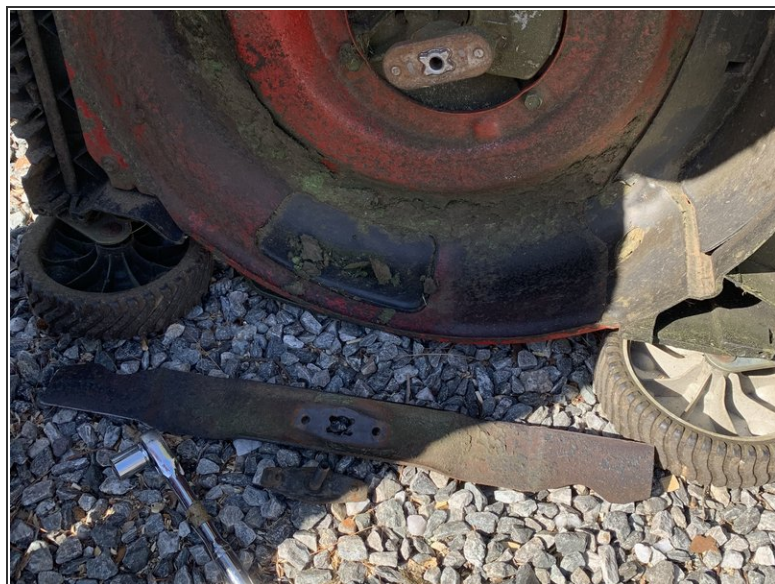
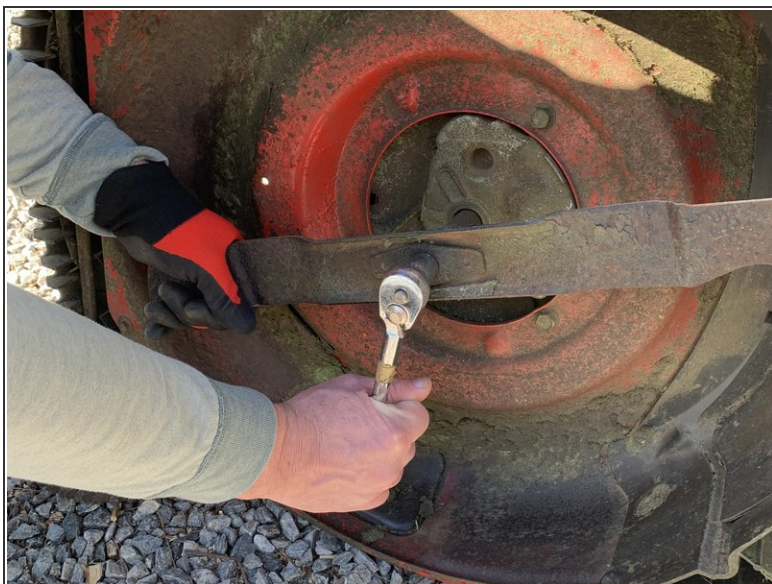
i This is done to prevent gas from spilling out when we turn over the lawnmower.

Step 3



- Turn the lawn mower over on its side.

Step 4



- Use a 5/8 ratchet or wrench to remove the bolt. Then remove the blade.

- ☑ Note how the blade is oriented on the lawn mower for reassembly.

⚠ Do not grab it from the sharp parts of the blade.

Step 5



- Clean the blade with a scraper or a wire brush to remove grass residue .

Step 6



- Secure the blade in a vice.

Step 7



- Sharpen the blade with a file or with a grinder. Follow the angle that is already established and move the file along until the edge becomes sharp.

⚠ Be careful when checking for sharpness. You can very gently run your finger along the edge to check.

- ① The blade does not need to be as sharp as a razor blade. Try to make it as sharp as pair of scissors. Check the lawnmower for specific details.

Step 8



- Put the blade back onto the lawn mower and screw the bolt back on while safely securing the blade.

⚠ Again be careful not to hold the blade by the sharp edges.

Step 9



- Flip the lawn mower back to the upright position and remove the saran wrap from the gas cap.
- Plug the spark plug wire in until you hear a click.