



SteelSeries Stratus XL Trigger Cleaning

Faulty L2 or R2 trigger on your controller? This guide will show you how to clean the triggers in your SteelSeries Stratus XL.

Written By: Jeffrey Zeng



INTRODUCTION

If your SteelSeries Stratus XL is having issues with it's L2 or R2 trigger, use this guide to allow proper function to your controller.

Your controller triggers are activated with a spring and a screw from an arm pot together on the inside. You may need to do some minor adjustments to the screw on the inside along with some lubing using some isopropyl alcohol for the arm socket.

Be sure to fully disconnect and power off your controller before starting your work.



TOOLS:

- [Y1 Tri-point Screwdriver](#) (1)
 - [Flathead 3/32" or 2.5 mm Screwdriver](#) (1)
 - [Q-Tips](#) (1)
 - [Isopropyl Alcohol 70%](#) (1)
-

Step 1 — SteelSeries Stratus XL Trigger Cleaning



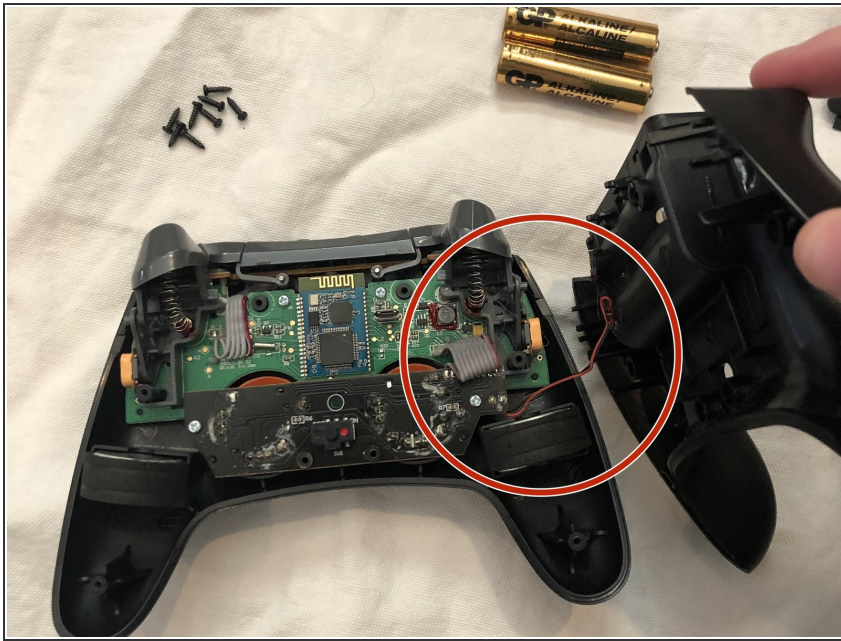
- Remove the battery cover and the batteries from the controller.

Step 2



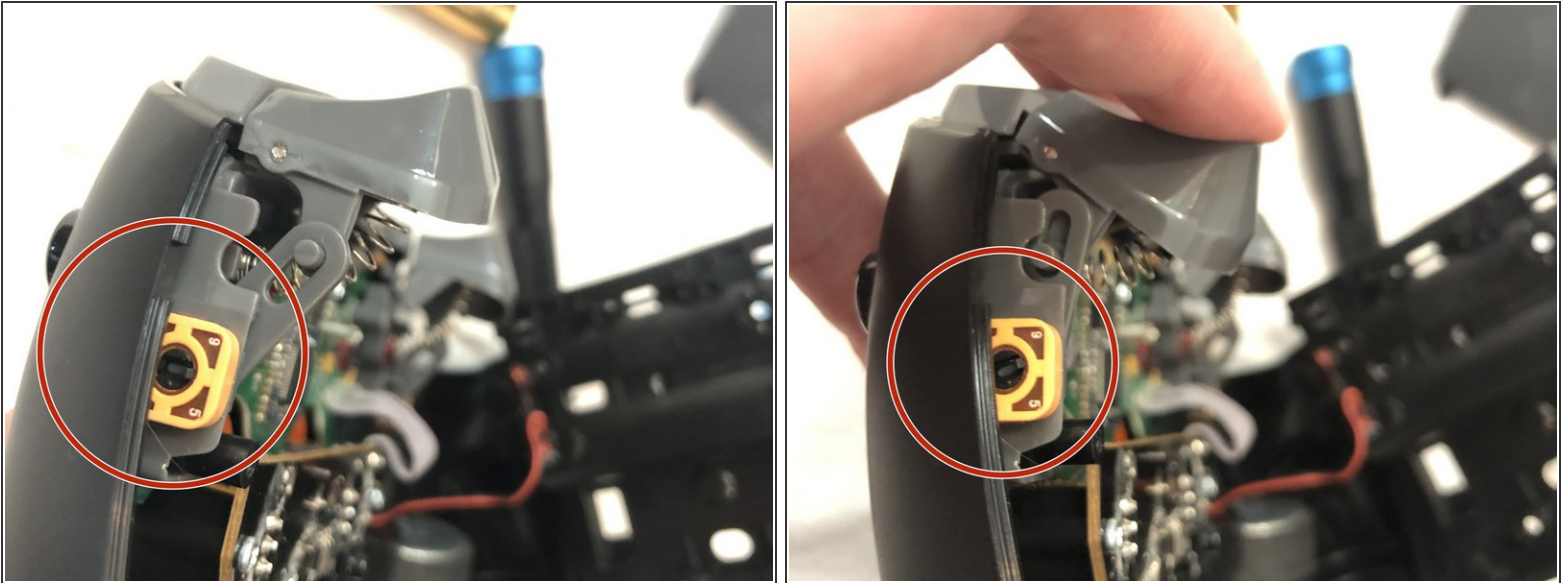
- Remove the eight 1 mm screws from the bottom of the controller using the Y1 Tri-Point screwdriver.

Step 3



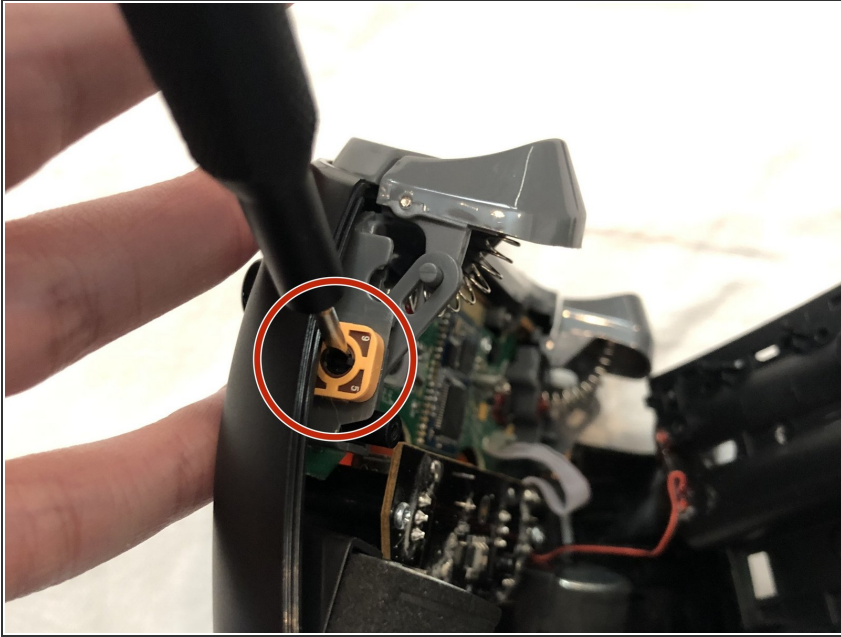
- Carefully pull the back of the controller off.
- ⚠ Be careful not to pull too hard damaging the wire connecting the two pieces inside.

Step 4



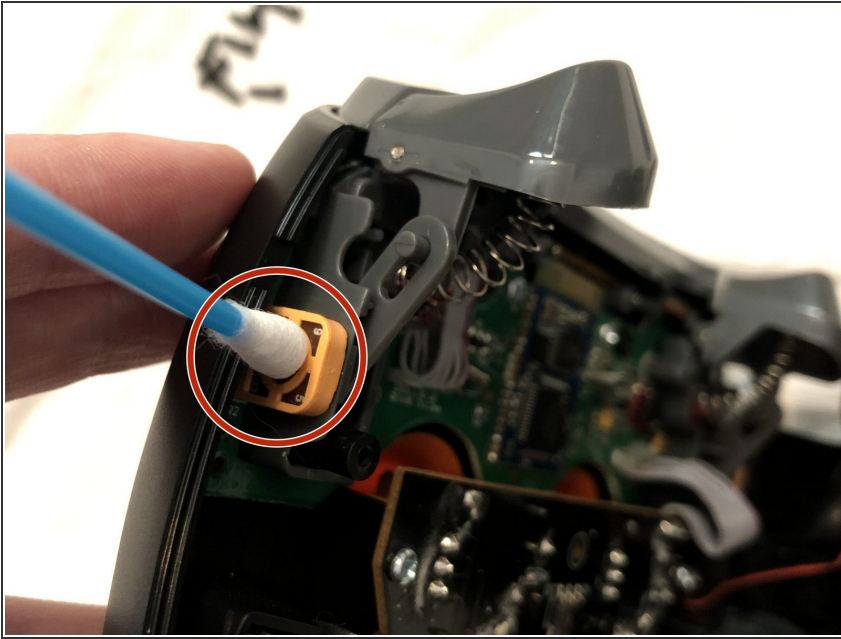
- Locate the trigger arm pot depending on which side you are having issues with on your controller.
- Depending on what issues you may be having with your controller, the screw in the arm pot may appear different. Push the trigger down a couple times and see what happens to the screw.
- ⓘ If your controller is registering phantom clicks without you pushing it, the screw may be a little too tight. Turning the screw slightly to the left may solve this issue.
- ⓘ If your controller is not registering when you push the trigger, the screw may be a little loose. Turning the screw slightly to the right may solve this issue.

Step 5



- Make minor adjustments to the screw inside the arm pot using your flathead screwdriver.

Step 6



- Dip your Q-tip in a bit of isopropyl alcohol and dab a little bit into the arm pot. Be careful not to let any leak over any other parts of the controller.

To reassemble your device, follow the instructions in reverse order.