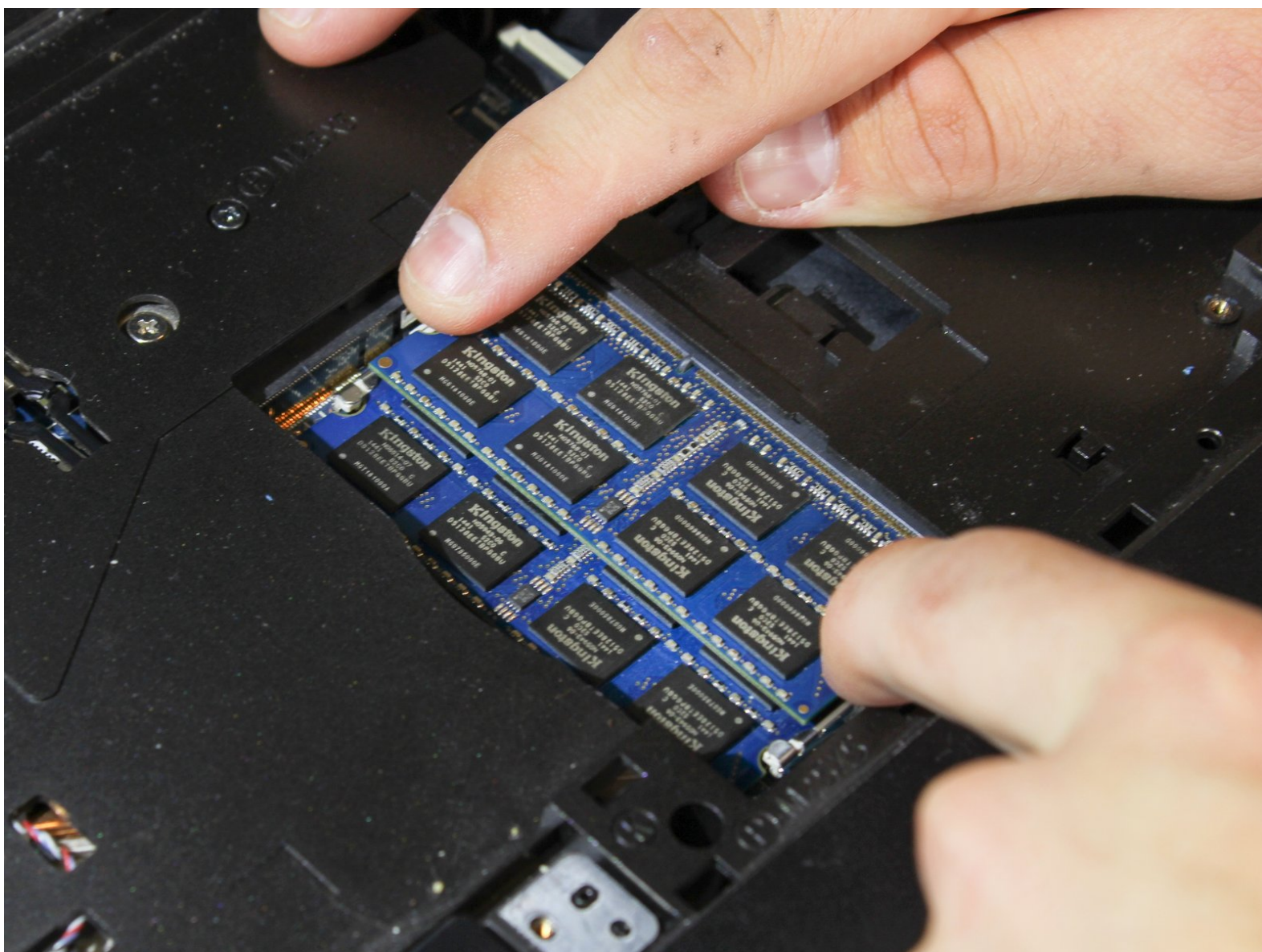




# Dell Precision M4800 Four Slot RAM Replacement

This guide shows users how to replace/upgrade any or all four of the DDR3 RAM (Random Access Memory) Cards on a Dell Precision M4800 laptop.

Written By: Mason Byrd



This document was generated on 2021-06-09 04:02:24 PM (MST).

## INTRODUCTION

Use this guide to replace the DDR3 RAM (Random Access Memory) Cards within the four different locations in your Dell Precision M4800 computer.

The RAM on a computer stores information and allows for this memory to be received and read instantaneously. It is imperative to know the correct type and size of the RAM Cards used within the computer. The DDR3 Ram cards may need to be replaced or upgraded within your computer due to excessive heat exposure, manufacturing defects, electrostatic exposure, or needing more memory to improve performance.

Before beginning, make sure to shut down your computer entirely and disconnect it from any power source.



### TOOLS:

- [iFixit Opening Picks set of 6](#) (1)
- [Phillips #1 Screwdriver](#) (1)



### PARTS:

- [Crucial RAM 8GB DDR3 1600 MHz CL11 Laptop Memory CT102464BF160B](#) (1)

## Step 1 — DDR3 Ram Card



 Ensure that all electrical sources are removed and turned off.

- Unplug the charger from the computer.
- Flip the computer, so the bottom is facing upwards.
  - Slide the release latch to release the battery.
  - Lift and remove the battery from the computer.

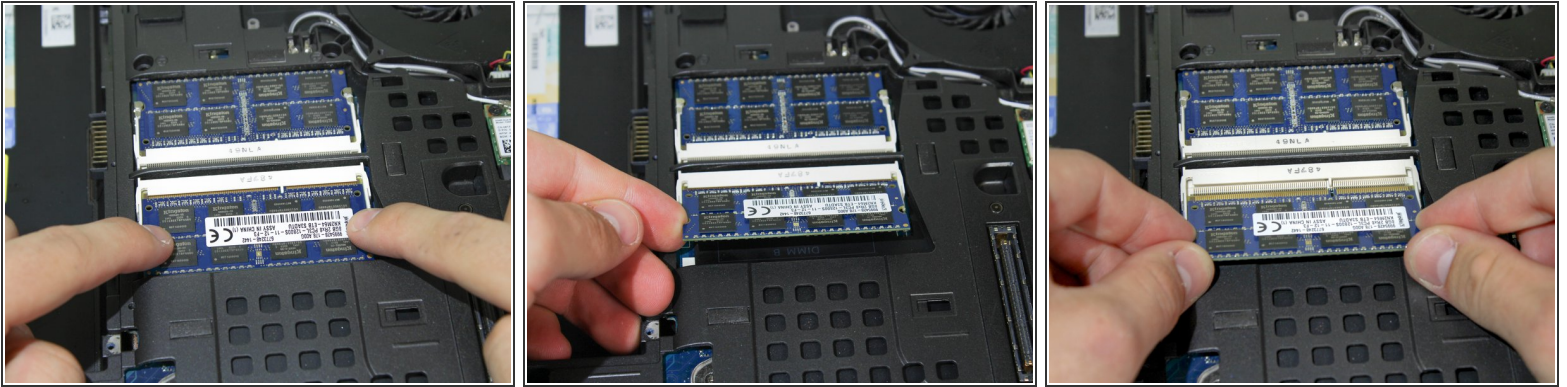
## Step 2



- Using a Phillips #1 screwdriver, remove the two 5 mm screws fastening the backplate.
- Slide the base cover towards the rear of the computer.
- Lift the base cover and remove it from the computer,

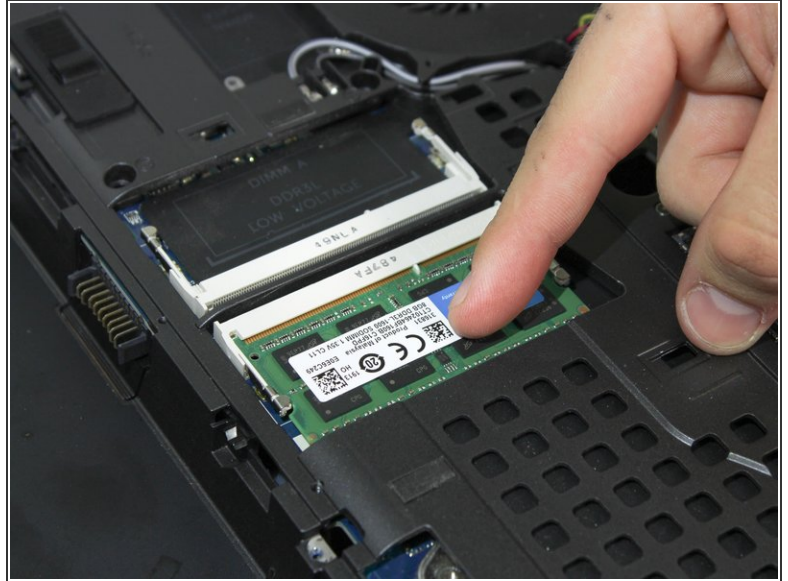
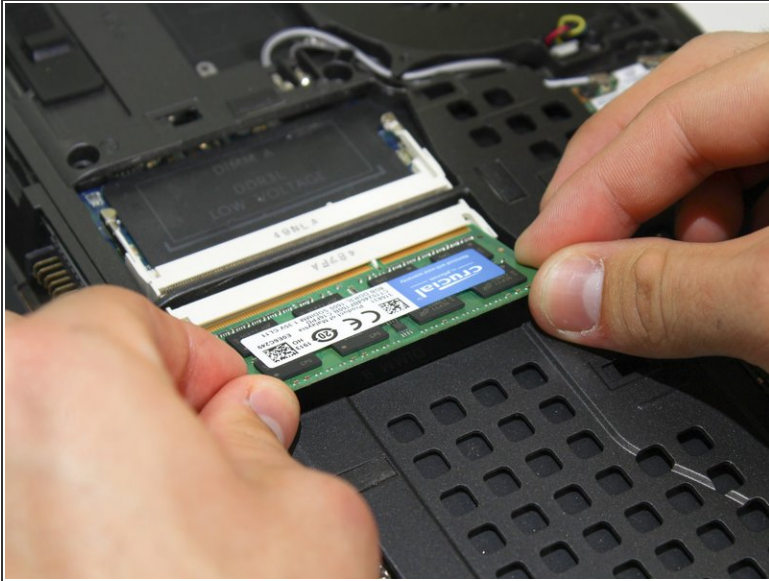


## Step 3



- Pull the retention clips away from the RAM card simultaneously.
- Lift the RAM card upwards.
- Pull the first RAM card away from the slot.
- Repeat this step to remove the second RAM card.

## Step 4



- Insert the replacement RAM card back into the slot diagonally.
- ⓘ The RAM card is keyed and will only go into the slot in one orientation.
- Lightly press the RAM card into the computer.
- ⓘ Ensure the RAM card is seated properly. Both tabs should be secured to the RAM card's grooves.

## Step 5



- Using a guitar pick or an iFixit Opening Pick, pry a section of the keyboard trim.
- Gently lift the trim with your finger until multiple tabs of the keyboard trim are unclipped. Go around the trim and unclip all tabs one by one.
- ⓘ While lifting the trim you will hear multiple snaps. This is normal as multiple tabs may unclip at once.
- Once all the tabs are unclipped, remove the keyboard trim from the device.

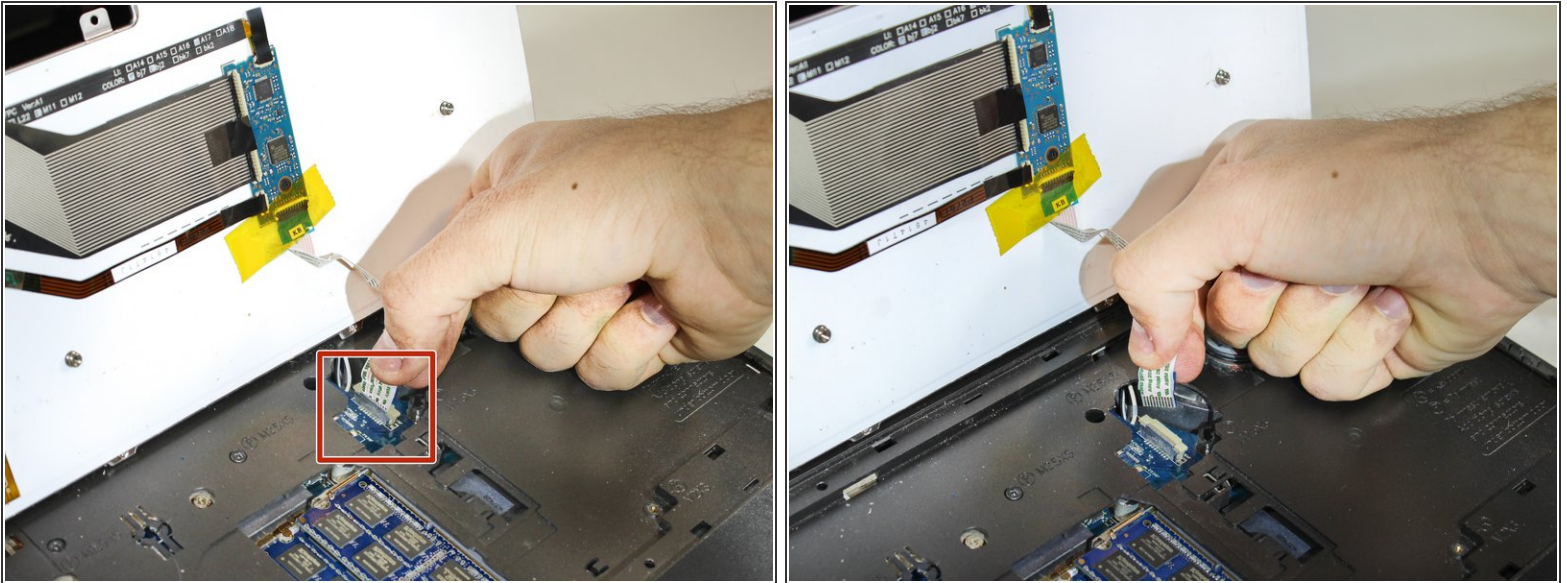
## Step 6



- Using the Phillips #1 screwdriver, remove the three 3 mm screws.
- ⓘ Ensure that all the screws are completely removed from the keyboard. They will easily get lost in the computer if they fall out.
- Lift the keyboard gently from retaining clips.
- ⚠ Do not immediately remove the keyboard from the computer. You could damage a connector if you lift it up too quickly or rip it away.

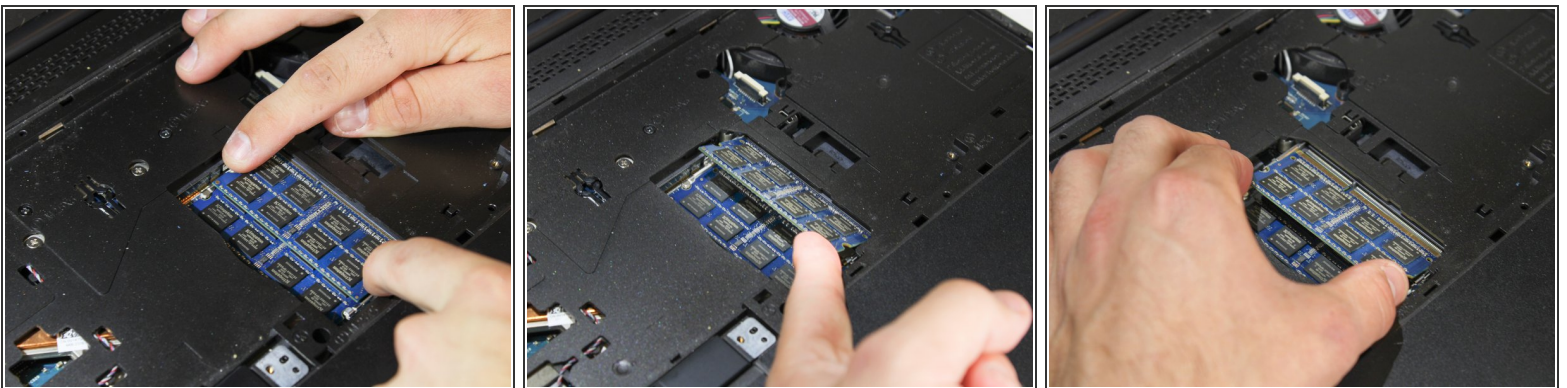


## Step 7



- Disconnect the ribbon connector that attaches the keyboard to the motherboard.
- Remove the keyboard.

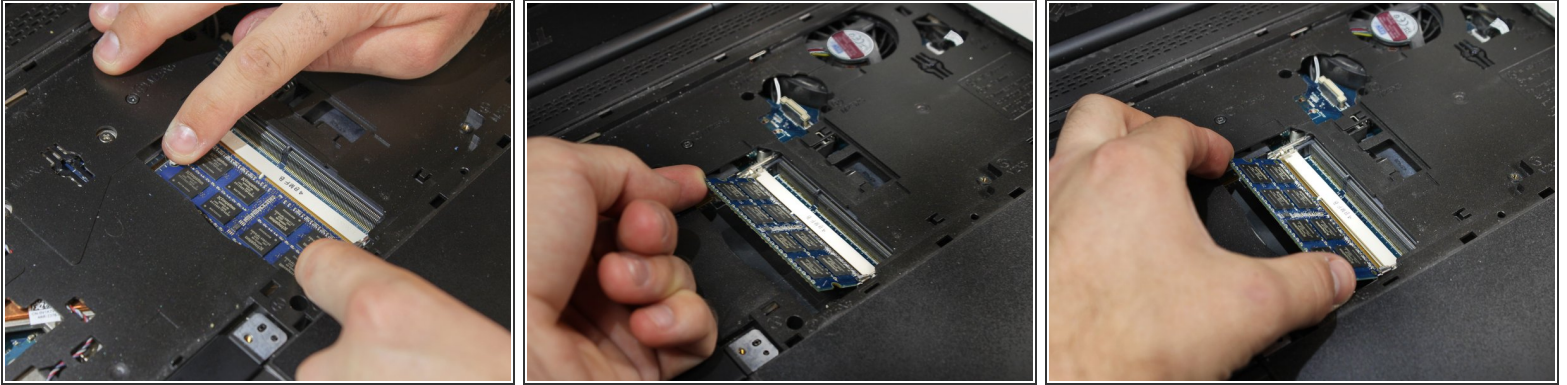
## Step 8



- Pull the retention clips away from the first RAM card simultaneously.
- Lift the first RAM card upwards.
- Pull the first RAM card away from the slot.

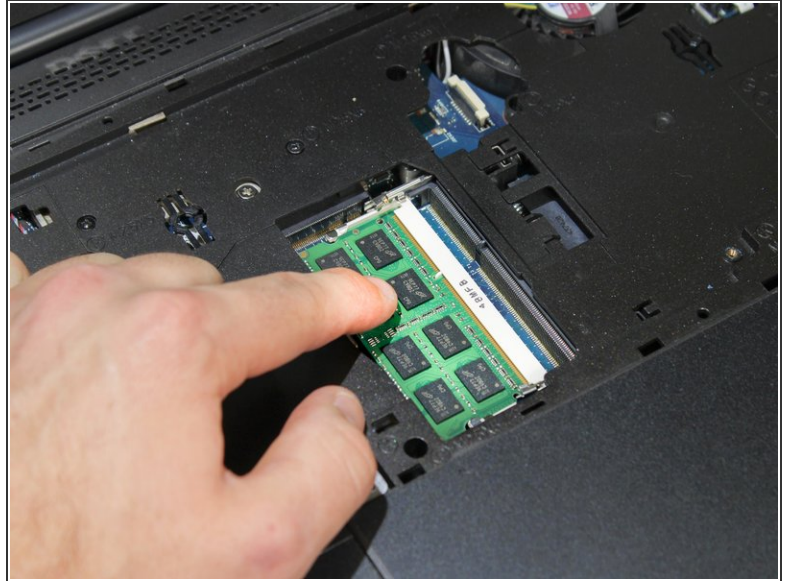


## Step 9



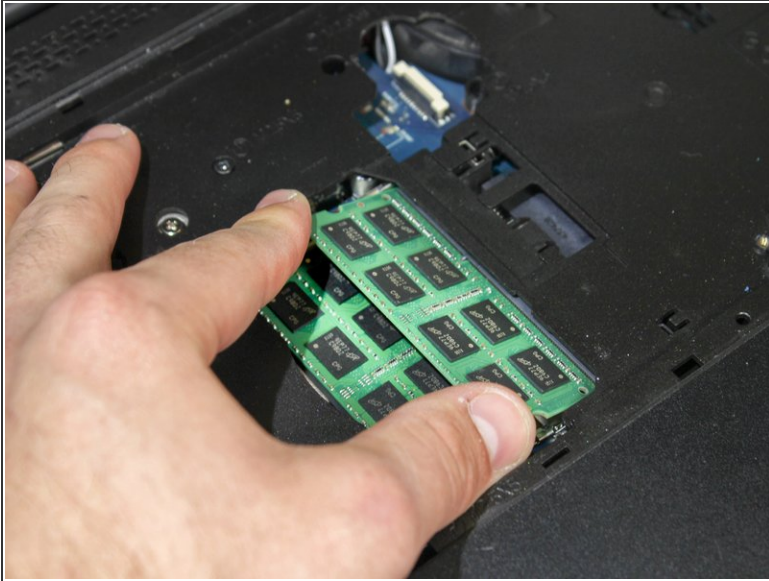
- Pull the retention clips away from the second RAM card simultaneously.
- Lift the second RAM card upwards.
- Pull the second RAM card away from the slot.

## Step 10



- Insert the first replacement RAM card into the slot at an angle.
- ⓘ The RAM card is keyed and will only go into the slot in one orientation.
- Lightly press the RAM card into the computer.
- ⓘ Ensure the RAM card is seated properly. Both tabs should be secured to the RAM card's grooves.

## Step 11



- Insert the second replacement RAM card into the slot at an angle.
- ⓘ The RAM card is keyed and will only go into the slot at one orientation.
- Lightly press the RAM card into the computer.
- ⓘ Ensure the RAM card is seated properly. Both tabs should be secured to the RAM card's grooves.

**To reassemble your device, follow these instructions in reverse order.**