



Asus ROG Zephyrus G14 RAM Replacement

The Zephyrus G14 has two RAM slots. The first...

Written By: Jacob Miller



INTRODUCTION

The Zephyrus G14 has two RAM slots. The first slot of Ram is soldered to the board. The second slot of Ram is accessible by taking off the backplate of the laptop. It is necessary to have these two slots of Ram filled can take advantage of Dual-Channel Memory. Dual-Channel Memory allows the Ram to function at its full potential in gaming and productivity applications. To take advantage of Dual-Channel Memory, ensure that the replacement stick is the same size and speed as the soldered stick.

TOOLS:


Long Neck Phillips Size 0 Screwdriver (1)

PARTS:

DDR4 SODimm RAM Stick (1)

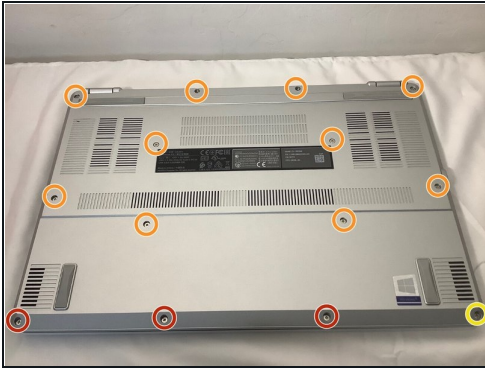
Step 1 — RAM



 Make sure to power off your laptop and unplug all accessories when disassembling to avoid damage.

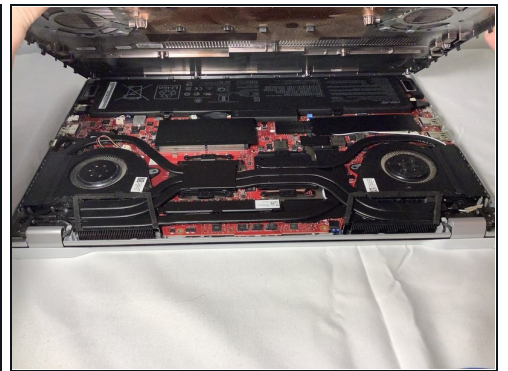
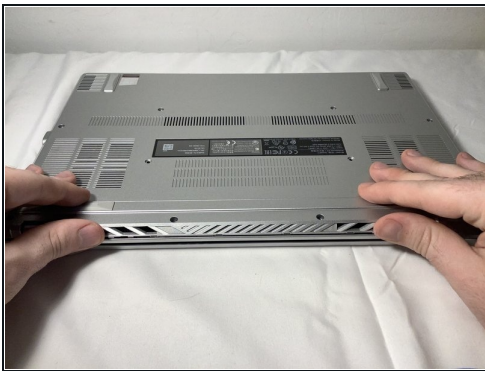
- Place the laptop so the backplate faces up.

Step 2



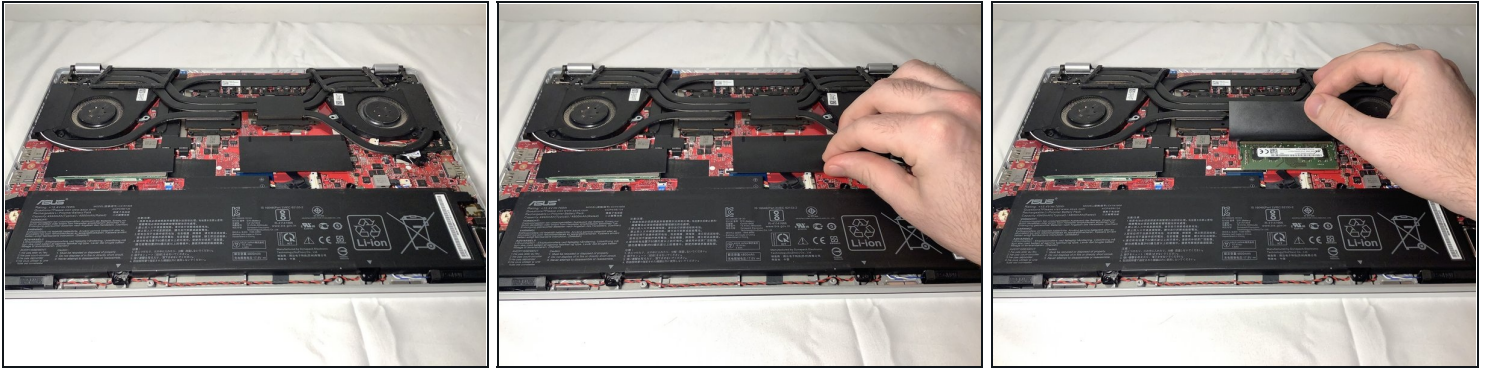
- Remove the screws on the back. Unscrew them with a Phillips #0 screwdriver.
- Remove the three (2x4.5mm) screws from the front of the laptop.
- Remove the ten (2x9mm) screws from the middle and back of the laptop.
- Unscrew the (2x6mm) captive screw in the bottom right without removing it.

Step 3



- Turn the computer around and pull up on the back panel to remove it.

Step 4



- Rotate the laptop around so the battery is facing towards you.

⚠ After you have located the RAM slot on the motherboard, disconnect the battery on the laptop to prevent any electrical shorts that may happen if you accidentally touch any of the components on the motherboard.

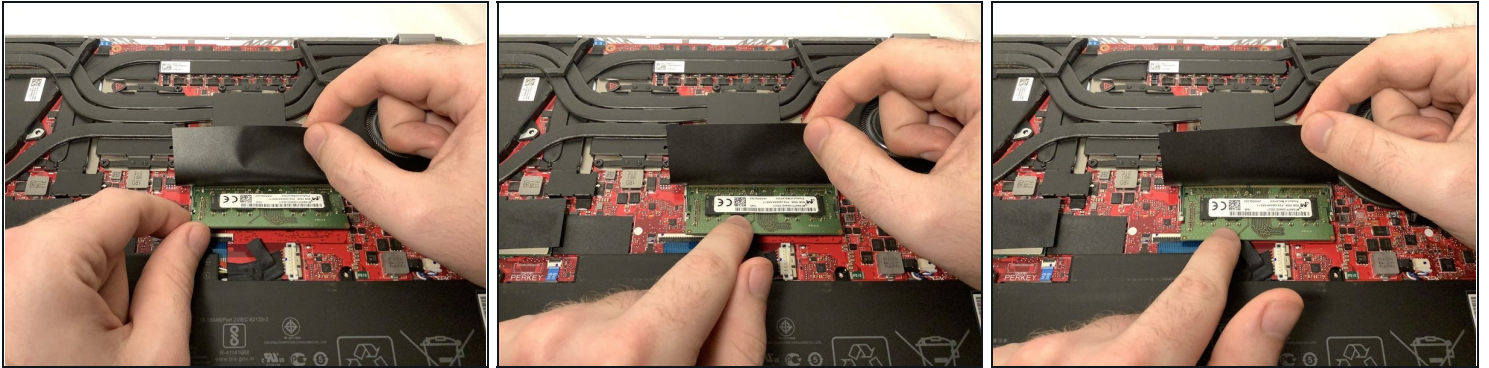
- Pull back on the black plastic that covers the RAM slot.

Step 5



- If there is a RAM stick currently in the laptop, pull the tabs on the left and right to allow the RAM to pop up.

Step 6



- ☒ Align and insert the RAM into the slot and push it down.
- Once the RAM clicks into place, check to make sure that the RAM is locked in place.
- ☒ After you have installed your new RAM stick, plug the battery back into the motherboard before putting the back panel on the laptop.

To reassemble your device, follow these instructions in reverse order.