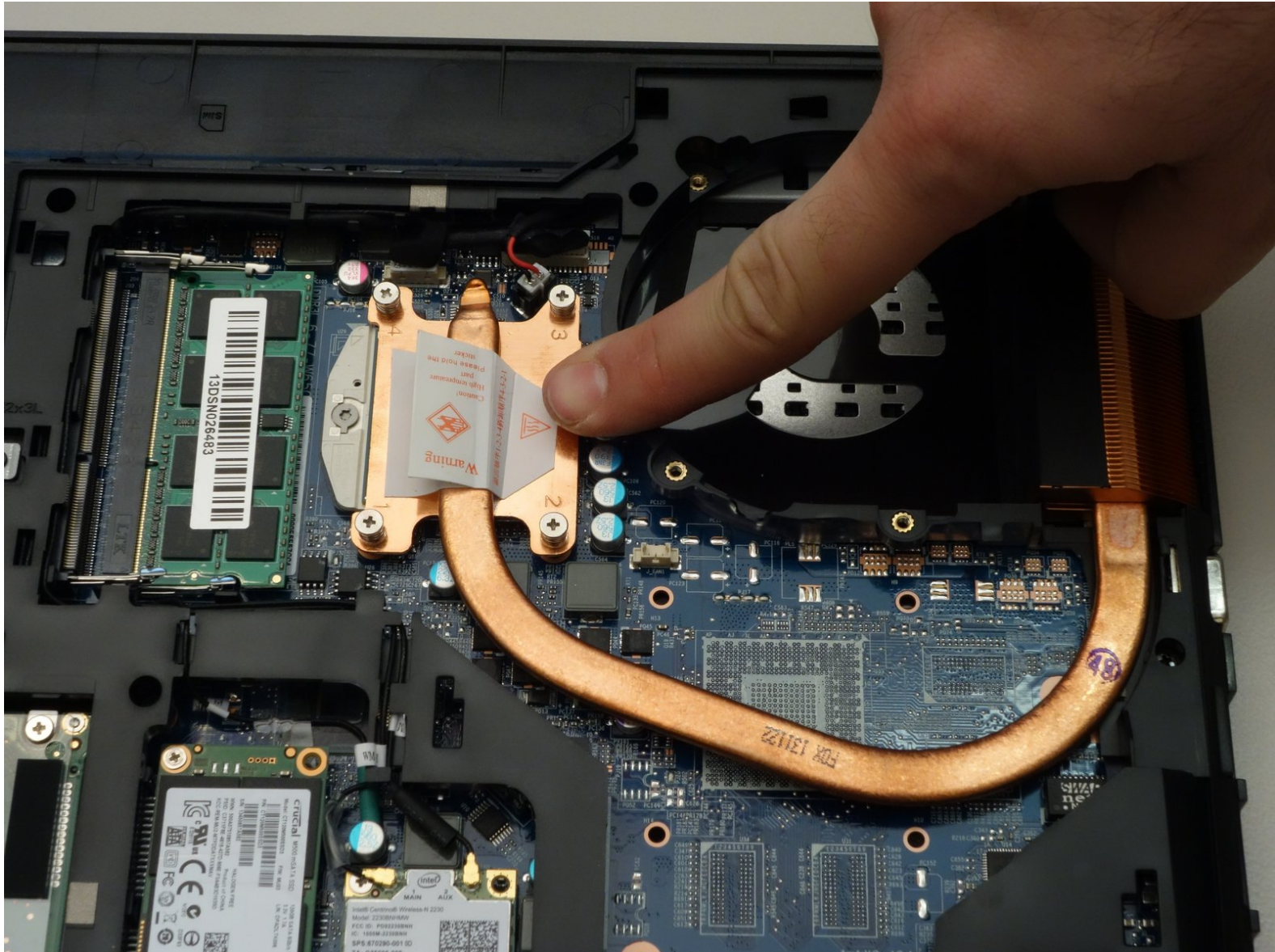




# why! W650SZ CPU Replacement

Written By: Felice Suglia



# INTRODUCTION

## Intel Core i5 4200M Haswell Processor (CPU) Replacement



### TOOLS:

- [Phillips #0 Screwdriver](#) (1)



### PARTS:

- [Pièces détachées pour W650SZ CH](#) (1)
- [Pièces détachées pour W650SZ EU](#) (1)

## Step 1 — Battery



- Slide the latch on the right to the unlocked position.
- Slide the latch on the left to the unlocked position.
- Remove the battery pack from the slot.

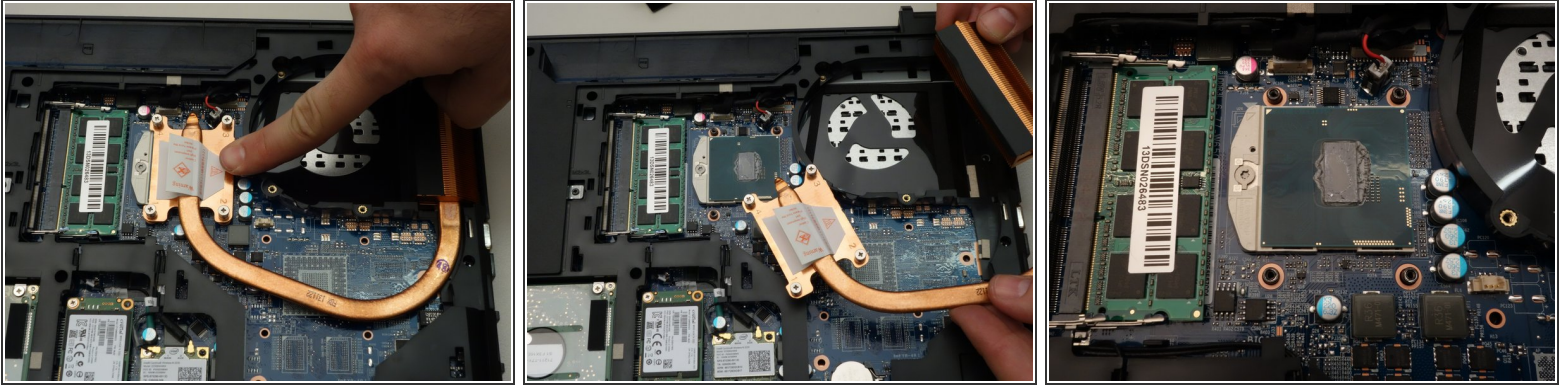
## Step 2 — why! W650SZ Bottom Cover Replacement



- With your #0 Philips screwdriver remove the 2 screws from the bottom panel.
- Now you can remove the bottom cover.



## Step 3 — CPU



- Using a Phillips screwdriver, unscrew the four captive screws securing the heatsink to the motherboard.
- Remove the heatsink.
- The processor and its retention mechanism is now visible.

## Step 4



- Unlock the processor using a small Torx screwdriver by turning the lock 180 degrees counterclockwise
- Make sure the locking latch is pointing in the opposite direction.
- You can now carefully remove the processor from its socket.

To reassemble your device, follow these instructions in reverse order.

