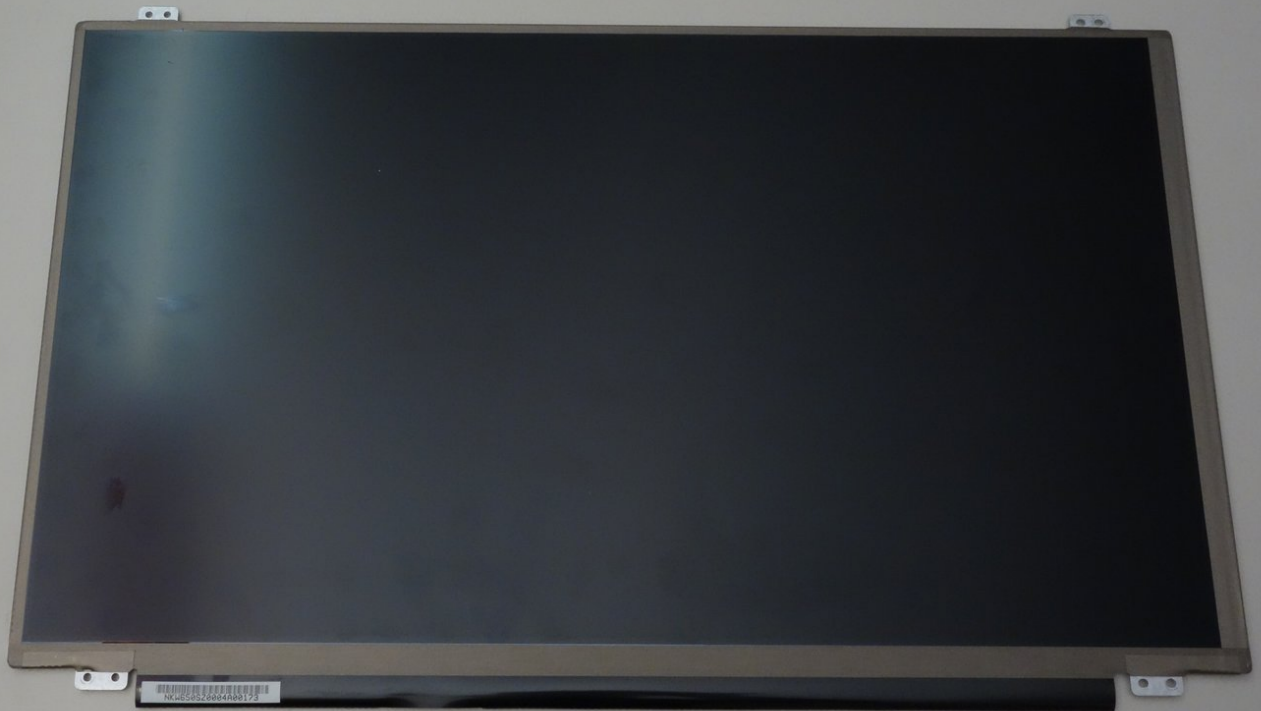




why! W650SZ LCD Screen Replacement

Written By: Felice Suglia





TOOLS:

- [Phillips #0 Screwdriver](#) (1)



PARTS:

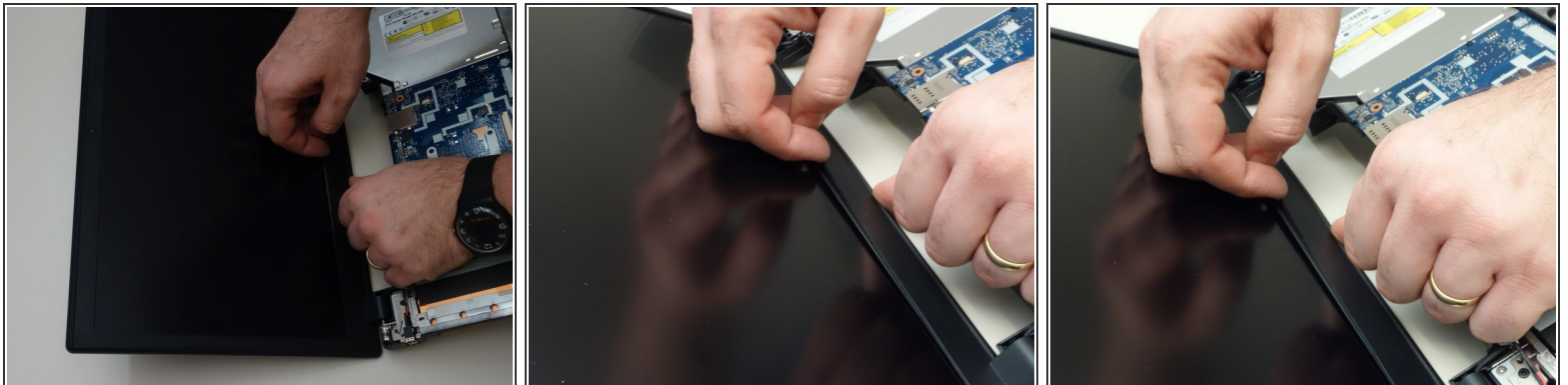
- [Pièces détachées pour W650SZ CH](#) (1)
- [Pièces détachées pour W650SZ EU](#) (1)

Step 1 — Battery



- Slide the latch on the right to the unlocked position.
- Slide the latch on the left to the unlocked position.
- Remove the battery pack from the slot.

Step 2 — Remove the Bezel



- i** Although the photos are shown without a keyboard, it is not necessary to remove the keyboard to replace the screen.
- Gently insert your fingernail between the display bezel and the LCD.

Step 3 — Remove the Bezel (continued)



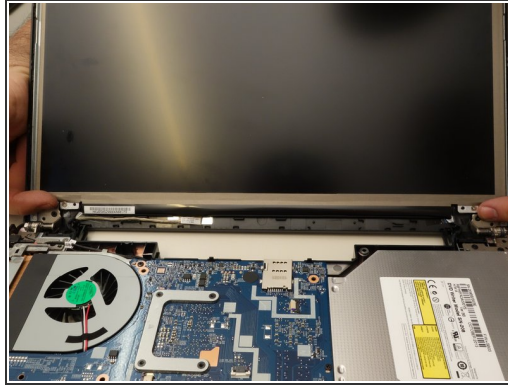
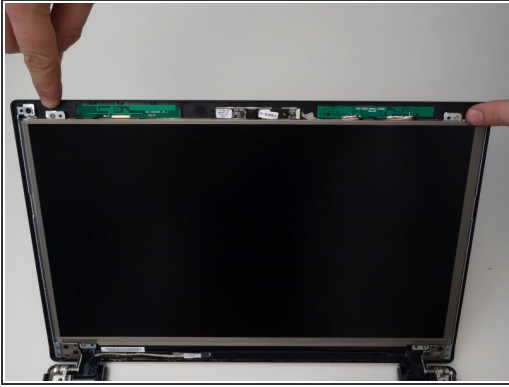
- Working your way around the frame, unclip the mounting points of the frame surrounding the LCD screen.

Step 4 — Remove the Bezel (continued)



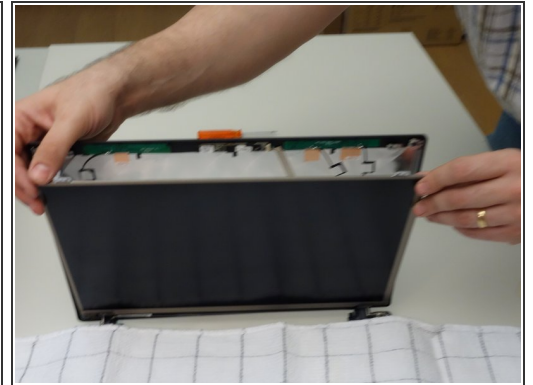
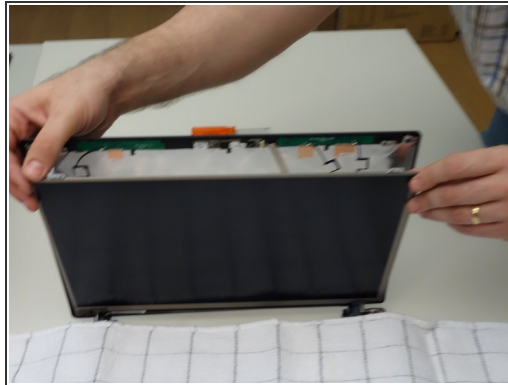
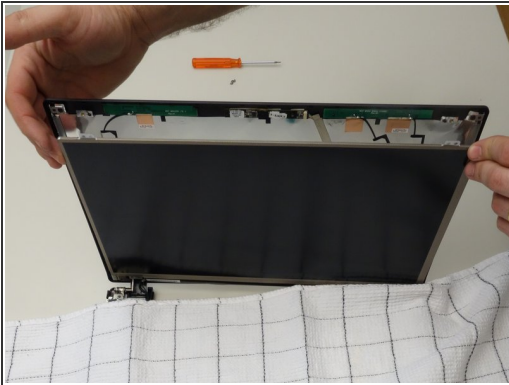
- Remove the bezel surrounding the LCD.

Step 5 — Remove the Screws Securing the LCD



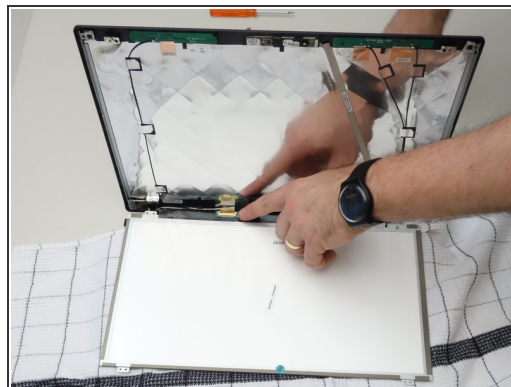
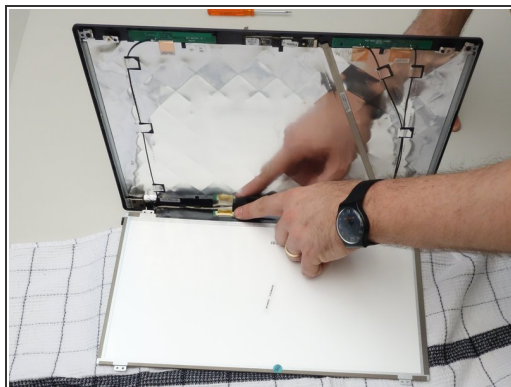
- Remove the two upper mounting screws securing the LCD to the lid.
- Remove the two lower mounting screws.

Step 6 — Separate the LCD from the Display



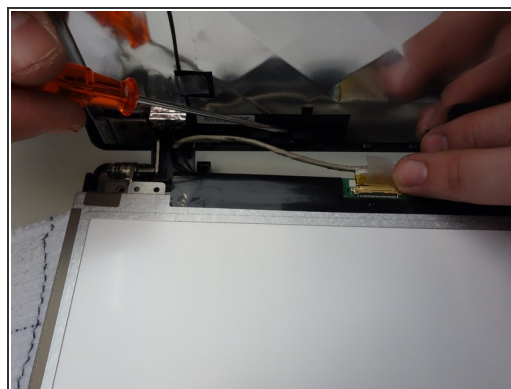
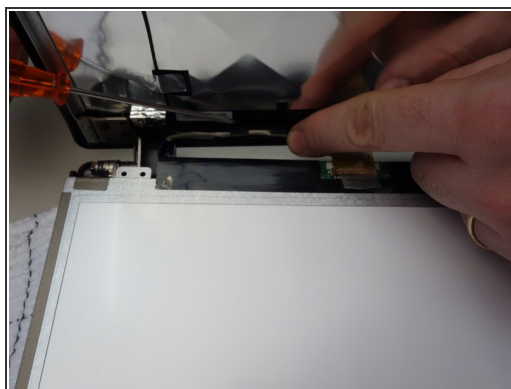
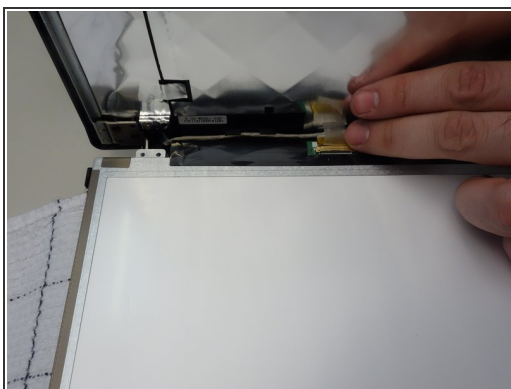
- Cover the keyboard with a cloth, then carefully lower the LCD screen onto the keyboard.

Step 7 — Disconnect the LCD Cable



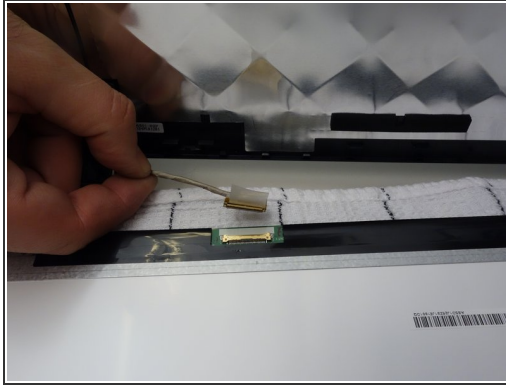
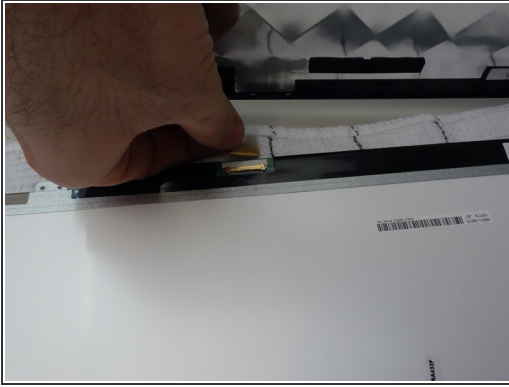
- Note the location of the LCD screen connector.

Step 8 — Remove the Connector Tape



- Using the plastic tab, peel back the tape securing the LCD cable the panel connector.

Step 9 — Unplug the LCD and Remove the Screen



- Unplug the connector.
- The LCD screen can now be removed.

To reassemble your device, follow these instructions in reverse order.