



why! W650SZ Hard Drive Replacement

Written By: Felice Suglia



**TOOLS:**

- [Phillips #0 Screwdriver](#) (1)

**PARTS:**

- [Pièces détachées pour W650SZ CH](#) (1)
- [Pièces détachées pour W650SZ EU](#) (1)

Step 1 — Battery



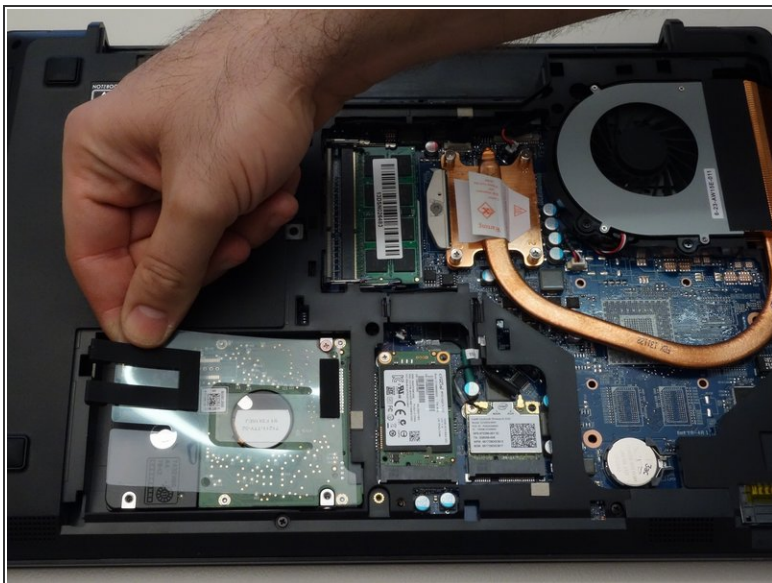
- Slide the latch on the right to the unlocked position.
- Slide the latch on the left to the unlocked position.
- Remove the battery pack from the slot.

Step 2 — why! W650SZ Bottom Cover Replacement



- With your #0 Philips screwdriver remove the 2 screws from the bottom panel.
- Now you can remove the bottom cover.

Step 3 — Hard Drive



- Lift out the plastic tab (including the rubber part that holds the HDD in its slot).
- Slide the drive to the left to disengage the connector then lift to remove the HDD from its SATA3 port.

To reassemble your device, follow these instructions in reverse order.