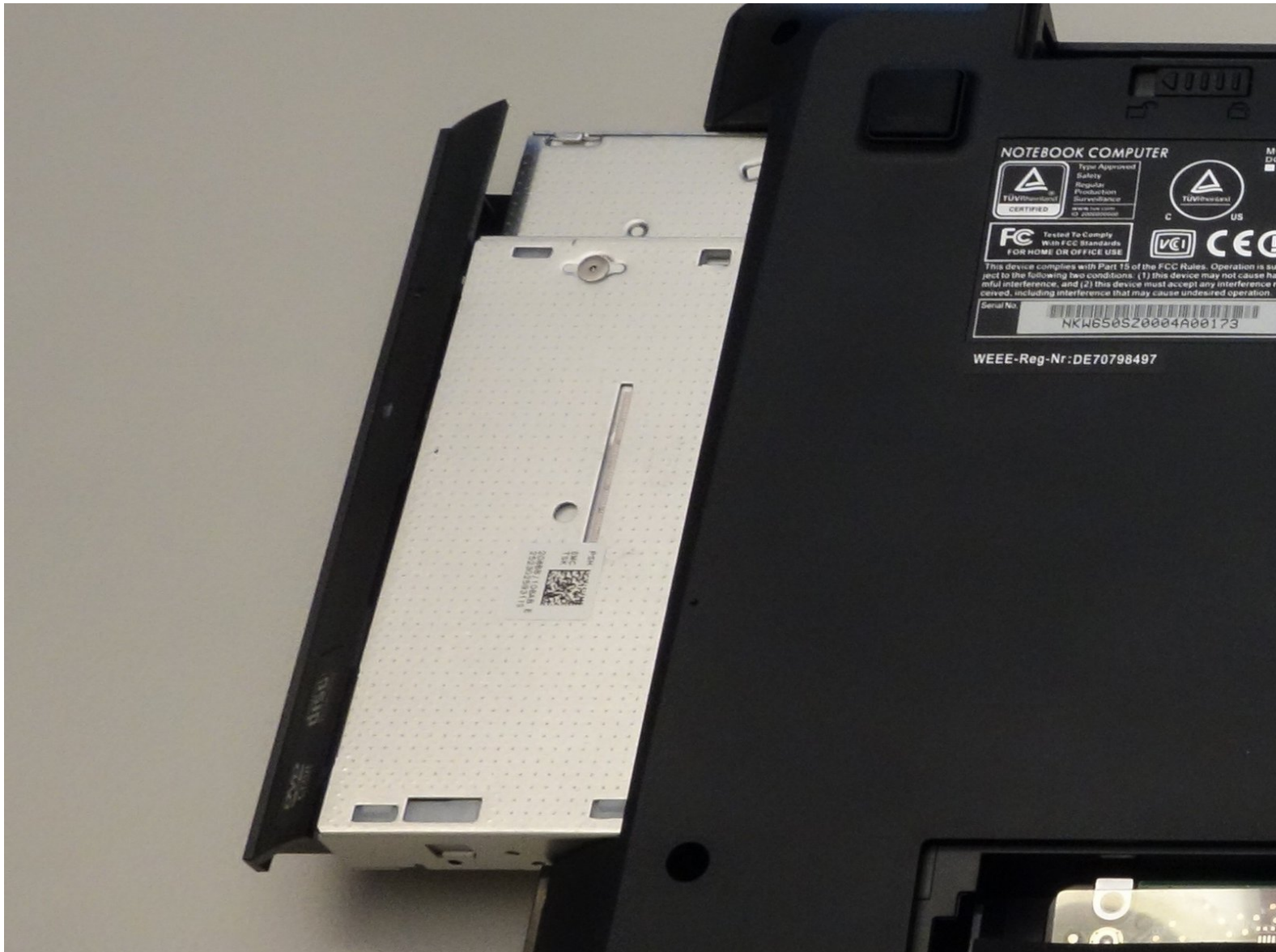




# why! W650SZ CD/DVD Drive Replacement

Written By: Felice Suglia





## TOOLS:

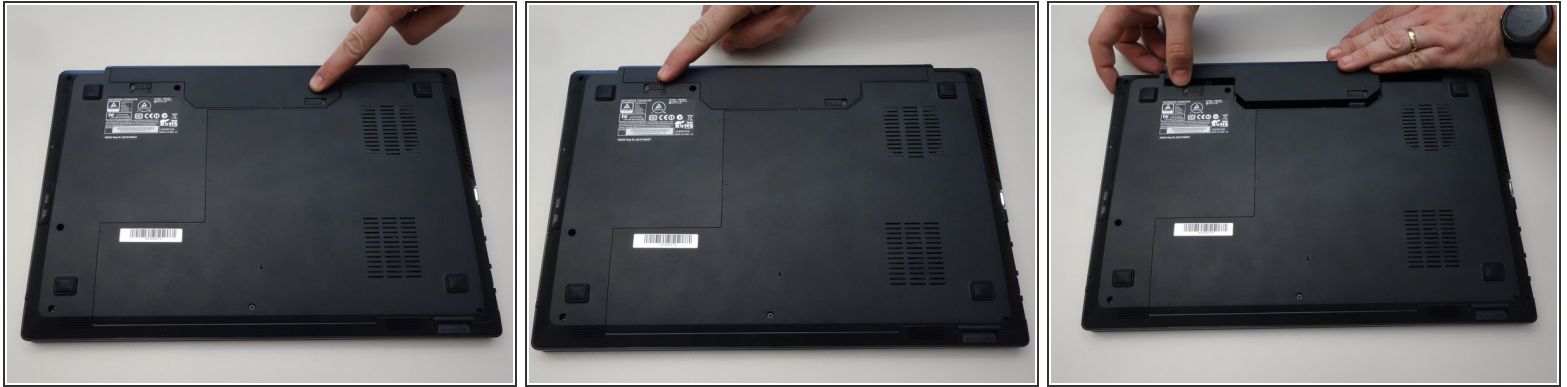
- [Phillips #0 Screwdriver](#) (1)



## PARTS:

- [Pièces détachées pour W650SZ CH](#) (1)
- [Pièces détachées pour W650SZ EU](#) (1)

## Step 1 — Battery



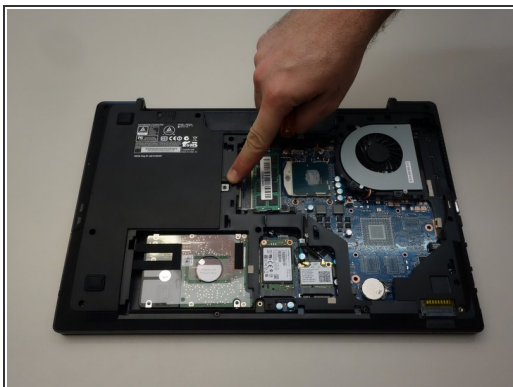
- Slide the latch on the right to the unlocked position.
- Slide the latch on the left to the unlocked position.
- Remove the battery pack from the slot.

## Step 2 — why! W650SZ Bottom Cover Replacement



- With your #0 Philips screwdriver remove the 2 screws from the bottom panel.
- Now you can remove the bottom cover.

## Step 3 — CD/DVD Drive



- Locate the screw securing the CD/DVD drive.
- Remove the Phillips screw securing the drive.
- Remove the CD/DVD drive by simply sliding it out from the chassis.

To reassemble your device, follow these instructions in reverse order.