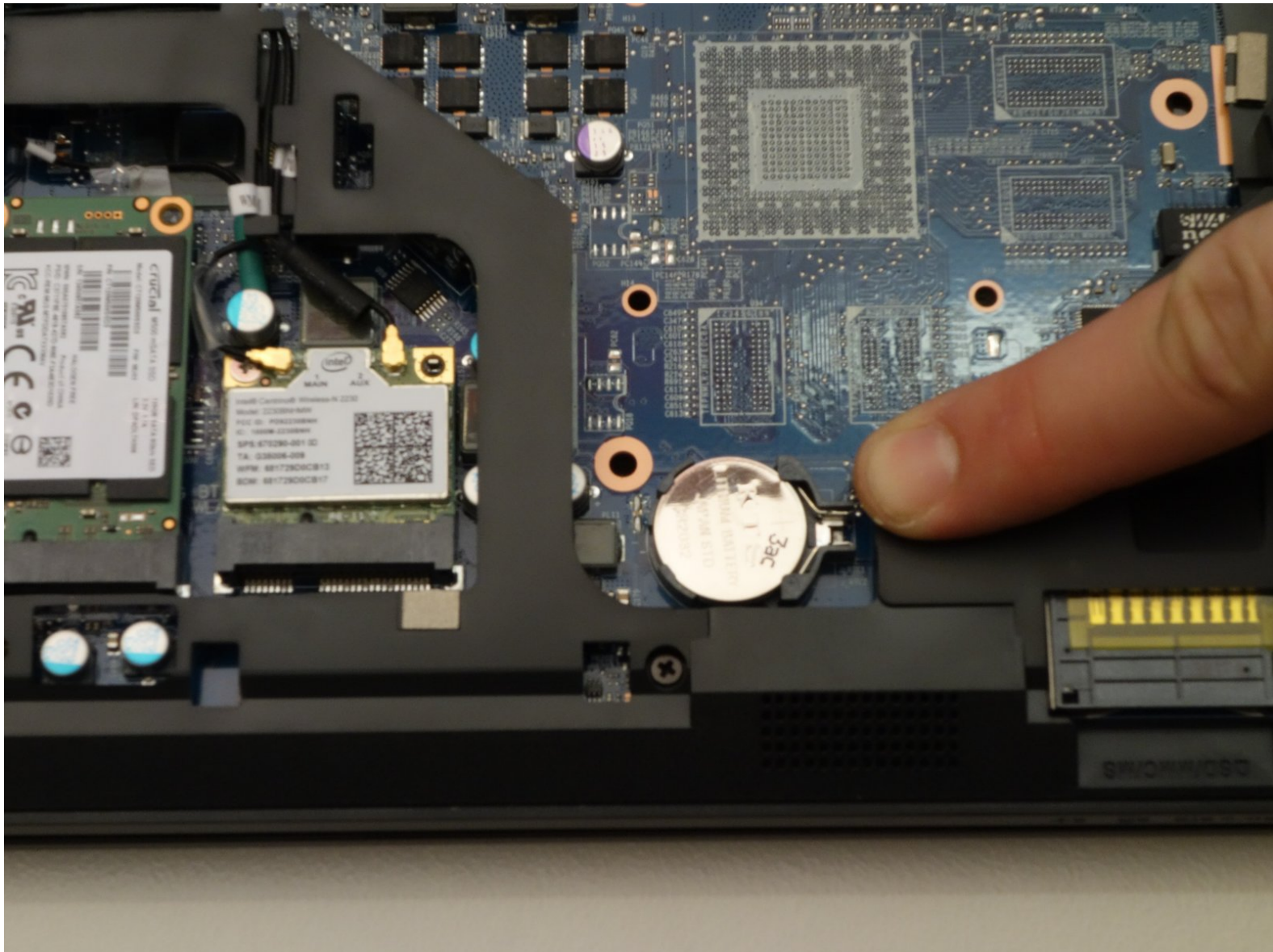




# why! W650SZ CMOS Battery Replacement

Written By: Felice Suglia



## INTRODUCTION

Replace the CMOS battery (maintains the BIOS settings needed to load your computer's operating system).



### TOOLS:

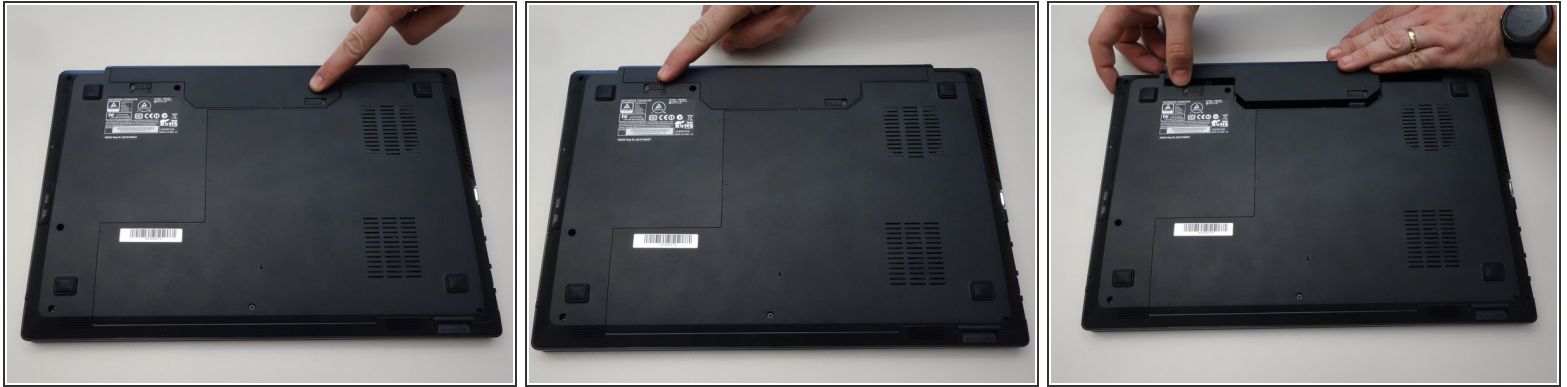
- [Phillips #0 Screwdriver](#) (1)



### PARTS:

- [Pièces détachées pour W650SZ CH](#) (1)
- [Pièces détachées pour W650SZ EU](#) (1)

## Step 1 — Battery



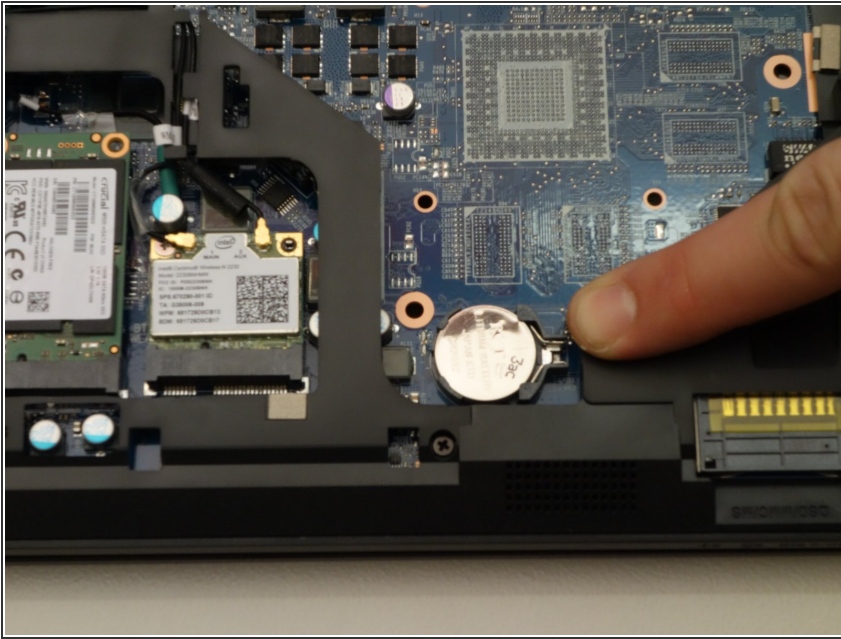
- Slide the latch on the right to the unlocked position.
- Slide the latch on the left to the unlocked position.
- Remove the battery pack from the slot.

## Step 2 — why! W650SZ Bottom Cover Replacement



- With your #0 Philips screwdriver remove the 2 screws from the bottom panel.
- Now you can remove the bottom cover.

## Step 3 — CMOS Battery



- Insert a plastic spudger in the left side of the battery holder and push the battery to the right to clear the tabs holding it in, then carefully pry the battery up from its holder.
- Please recycle your batteries.

To reassemble your device, follow these instructions in reverse order.