



why! W650SZ Solid State Drive (SSD) Replacement

Written By: Felice Suglia



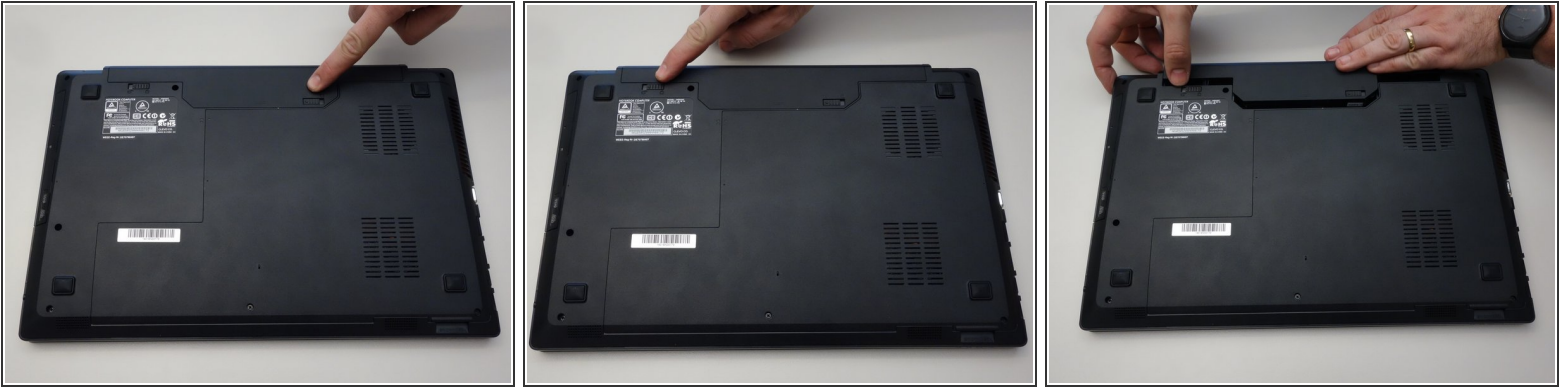
**TOOLS:**

- [Phillips #0 Screwdriver](#) (1)

**PARTS:**

- [Pièces détachées pour W650SZ CH](#) (1)
- [Pièces détachées pour W650SZ EU](#) (1)

Step 1 — Battery



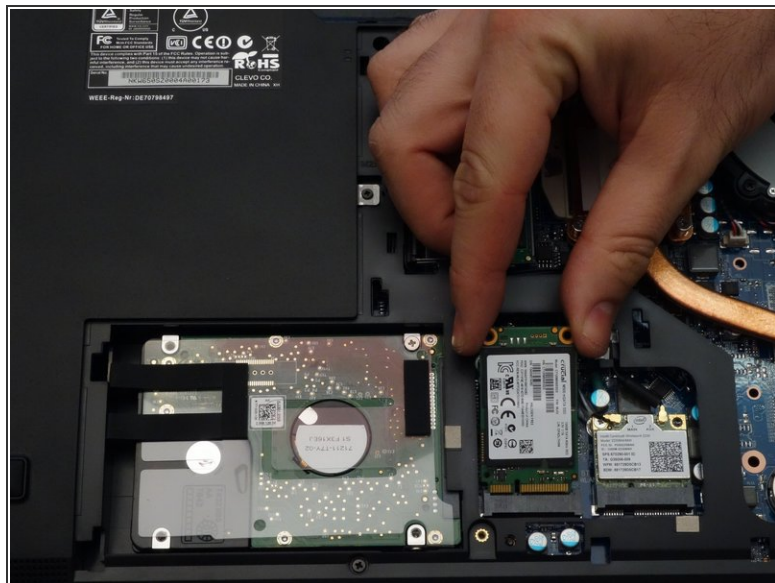
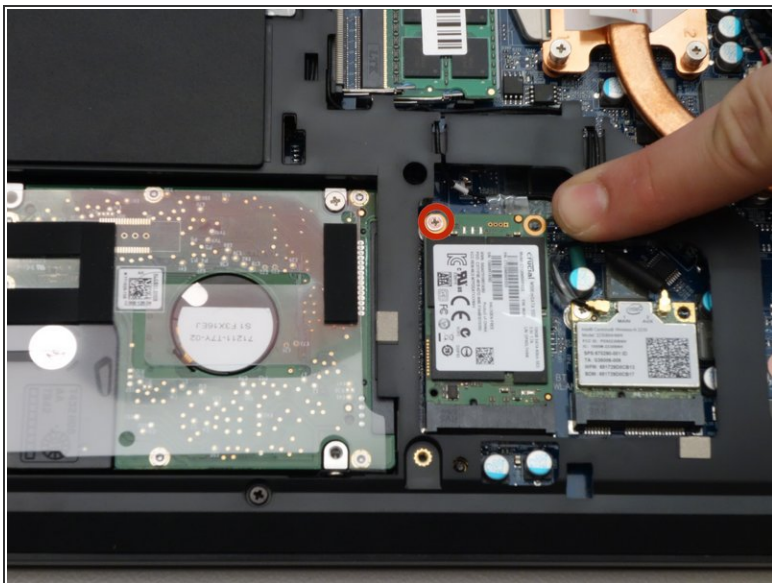
- Slide the latch on the right to the unlocked position.
- Slide the latch on the left to the unlocked position.
- Remove the battery pack from the slot.

Step 2 — why! W650SZ Bottom Cover Replacement



- With your #0 Philips screwdriver remove the 2 screws from the bottom panel.
- Now you can remove the bottom cover.

Step 3 — Solid State Drive (SSD)



- Using a Philips screwdriver #0, remove the screw securing the SSD.
- Lift the end of the SSD slightly and pull it straight out to remove it.

To reassemble your device, follow these instructions in reverse order.