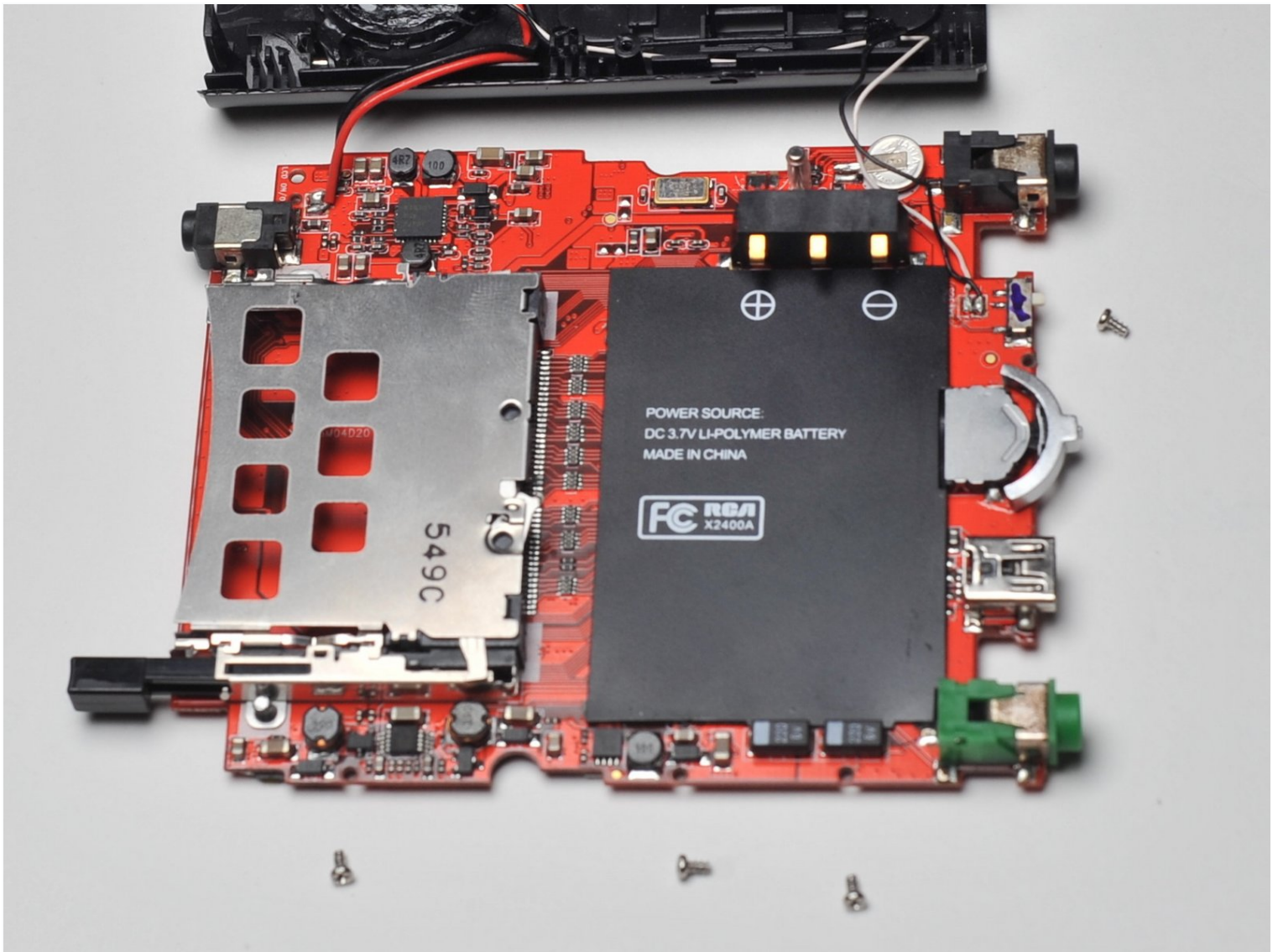




# RCA Lyra X2400 DC Power Adaptor Replacement

Use this guide to replace the power port of the...

Written By: Joseph Goodwin



# INTRODUCTION

Use this guide to replace the power port of the RCA Lyra X2400.

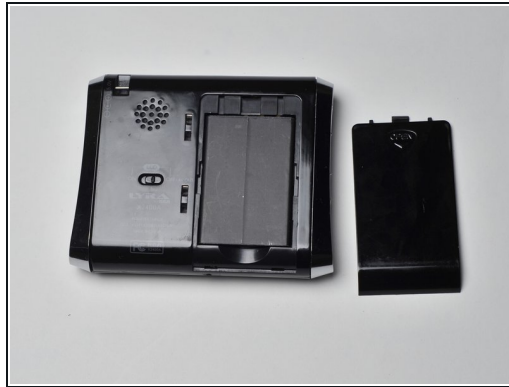
## TOOLS:

[iFixit Opening Tool](#) (1)

[Phillips #00 Screwdriver](#) (1)

[Soldering Workstation](#) (1)

## Step 1 — Battery



- Using slight pressure with your finger on the word "OPEN", slide the battery plate down.
- Remove the battery plate.
- Place your finger at the bottom of the battery.
- Lift up on the battery until it pops out from the LYRA X2400.

## Step 2 — Screen



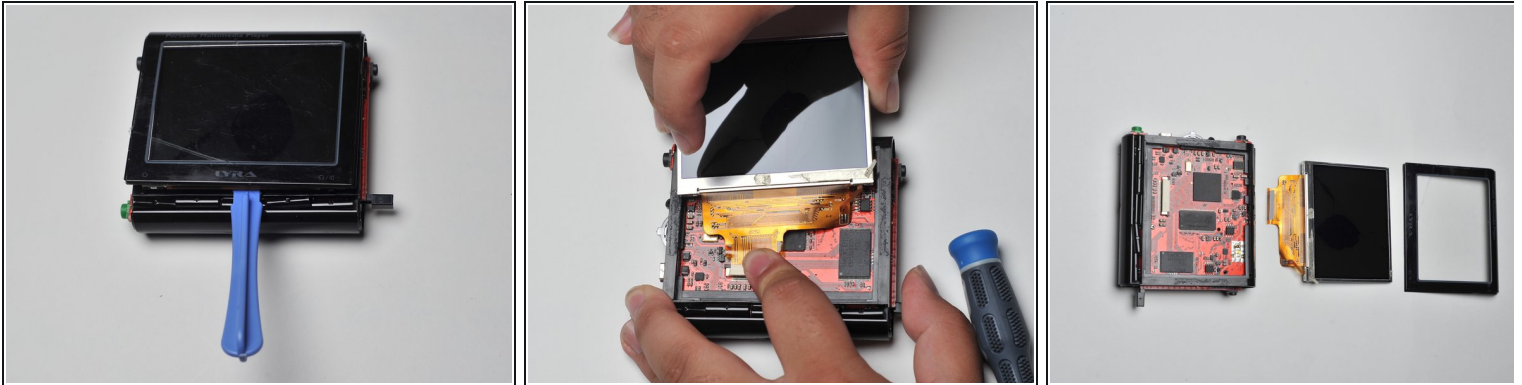
- Remove the two Phillips screws from the silver cover at the top of the Lyra.
- Slowly wiggle the silver cover while pulling it away from the device.

## Step 3



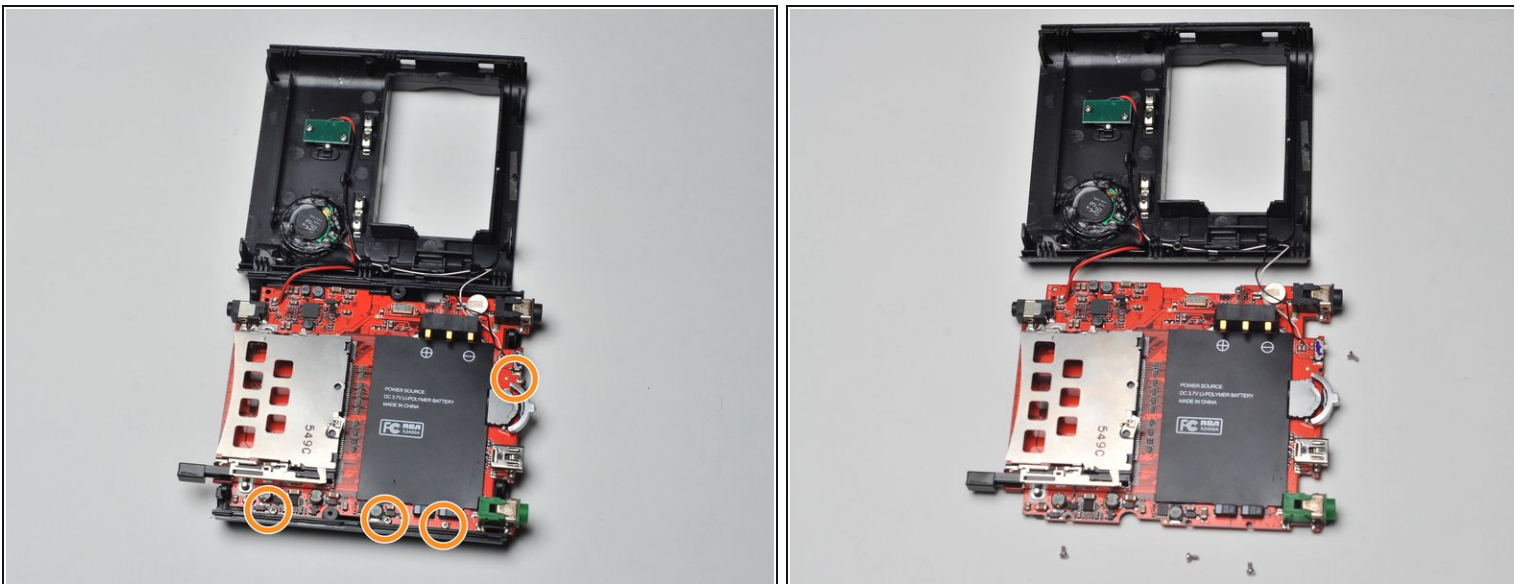
- Remove the two Phillips screws from the bottom of the device, next to the charger port and Compact Flash release button.
- Pull the silver case from the bottom of the device.

## Step 4



- Carefully pry up the screen with a plastic opening tool.
- Disconnect the screen's ribbon cable from the circuit board.
- Remove the screen.

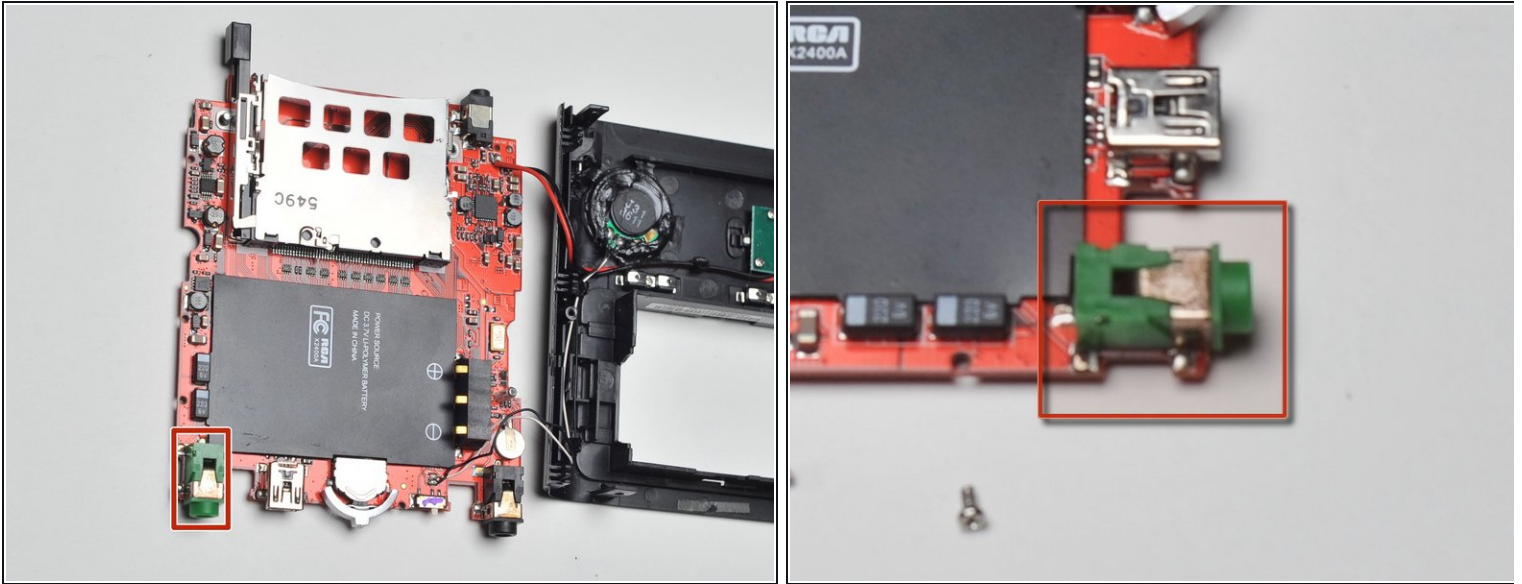
## Step 5 — Motherboard



- Open the case of the Lyra.
- Remove the four screws that secure the motherboard to the frame of the Lyra X2400.



## Step 6 — DC Power Adaptor



- Locate the DC power adaptor component on your Lyra X2400. If you are having difficulty locating this component the picture to the left will show you where it is located.
- Start using solder/desolder tools to remove the DC power adaptor.
  - ❗ If you need information on soldering, check out this [guide](#).
- Once removed replace it with the new working DC power adaptor.
  - Use the soldering tools to reattach the component back to the main logic board.

To reassemble your device, follow these instructions in reverse order.