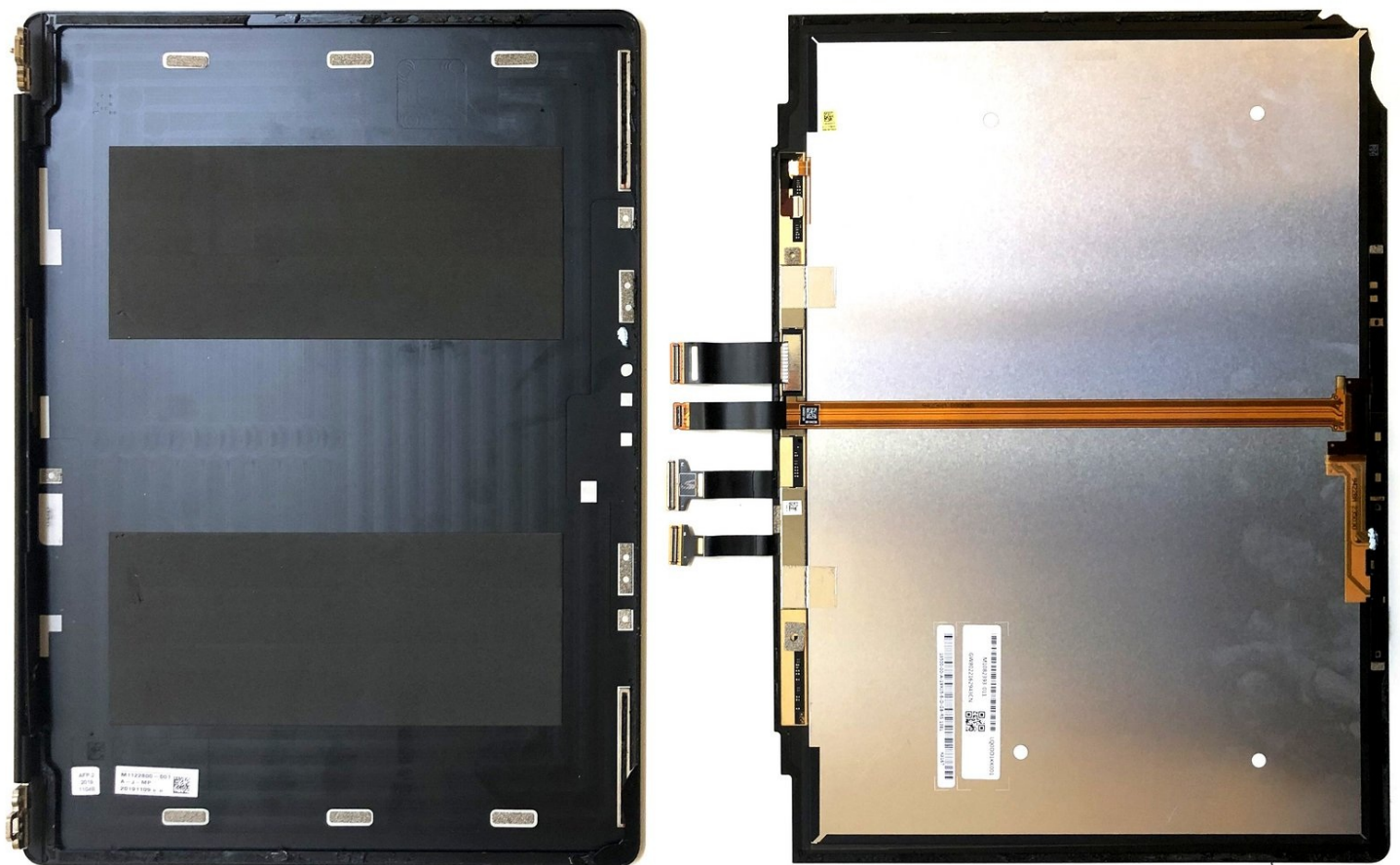




Microsoft Surface Laptop 3 13.5" LCD Assembly Replacement

Written By: Eric



PARTS:

Surface Laptop 3 13.5" Screen (1)

Step 1 — LCD Assembly



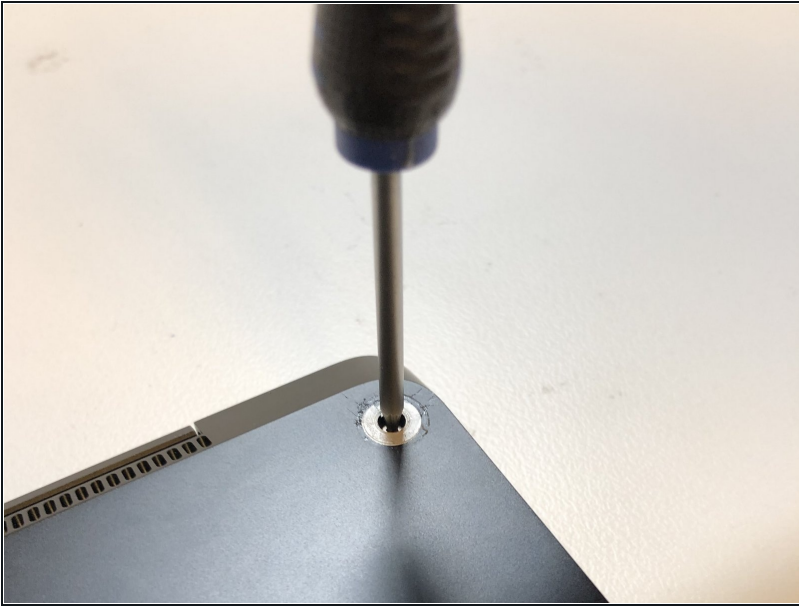
- It's far easier than any other Surface device.

Step 2



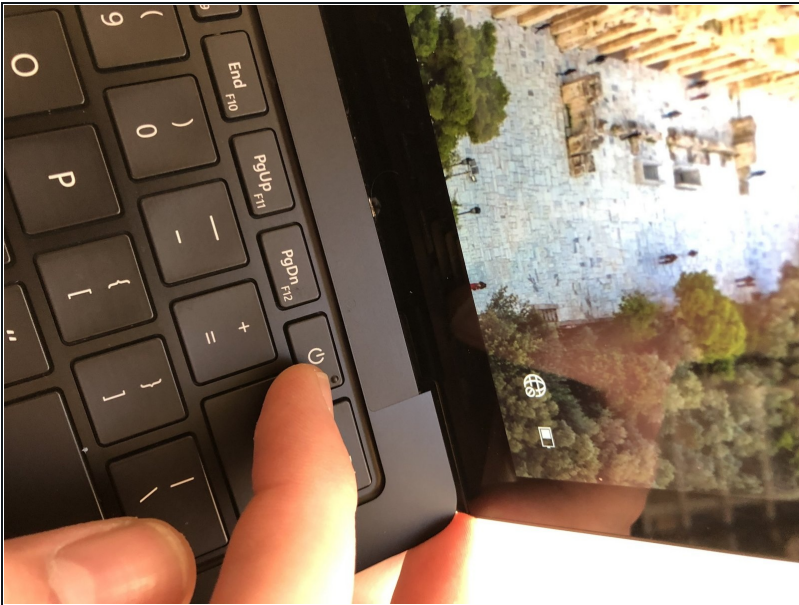
- From the bottom, carefully pry up the rubber feet on all 4 corners.

Step 3



- Using a T5 screwdriver remove the 4 screws on each corner.

Step 4



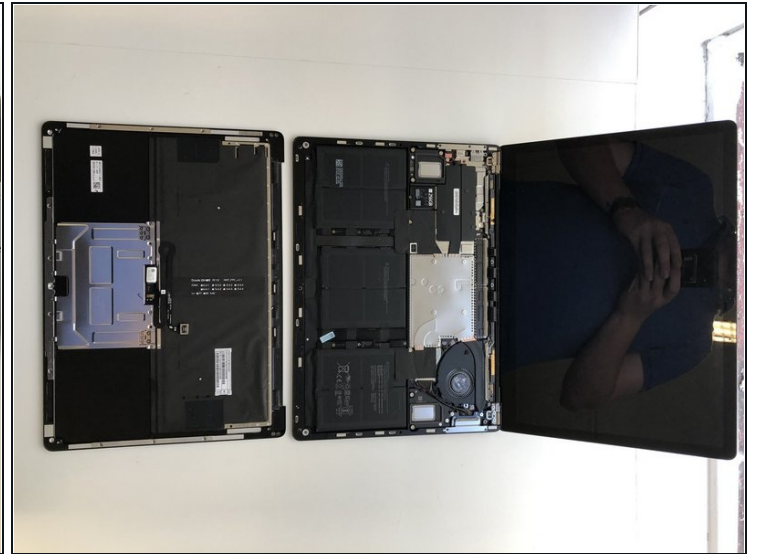
- Make sure the device is completely turned off before proceeding.

Step 5



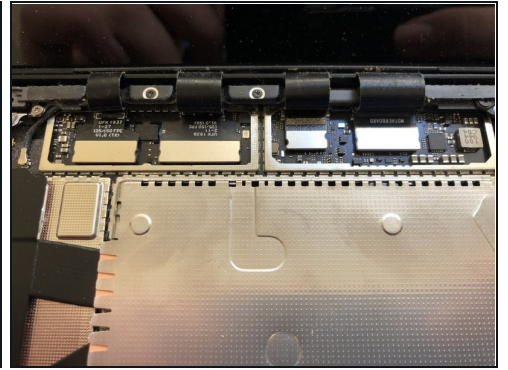
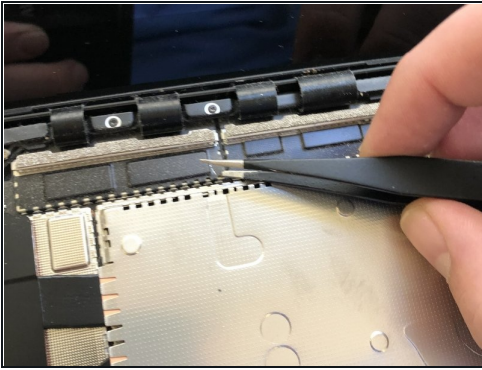
- With the screen open, lift the keyboard out. It doesn't take much force as the part is only held in with magnets once the screws are removed.

Step 6



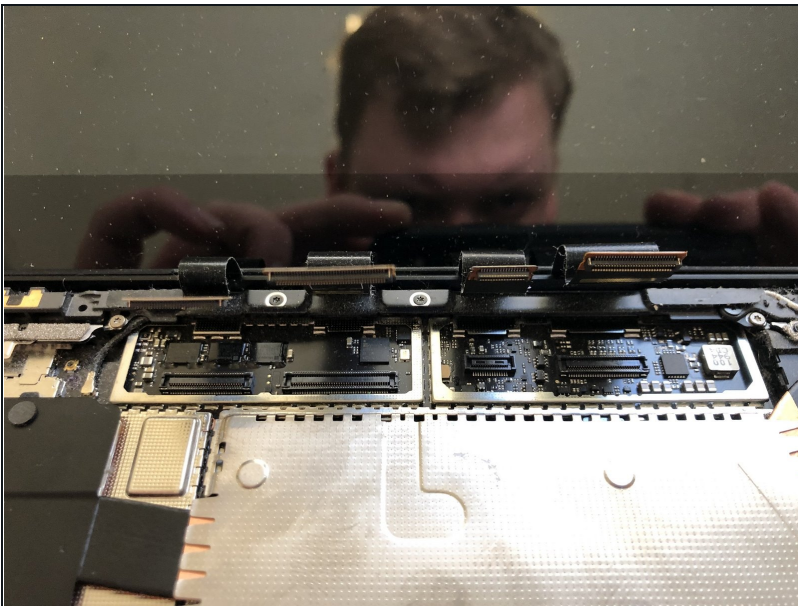
- Invert the keyboard on itself and remove the unshielded keyboard assembly connector.

Step 7



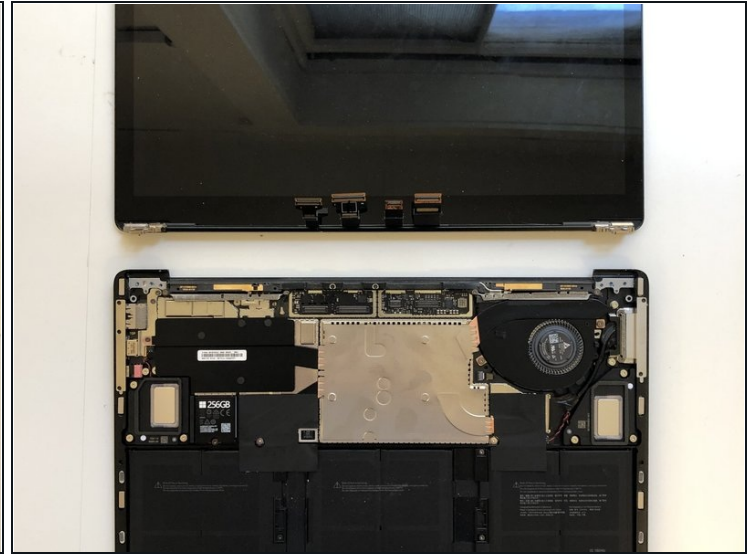
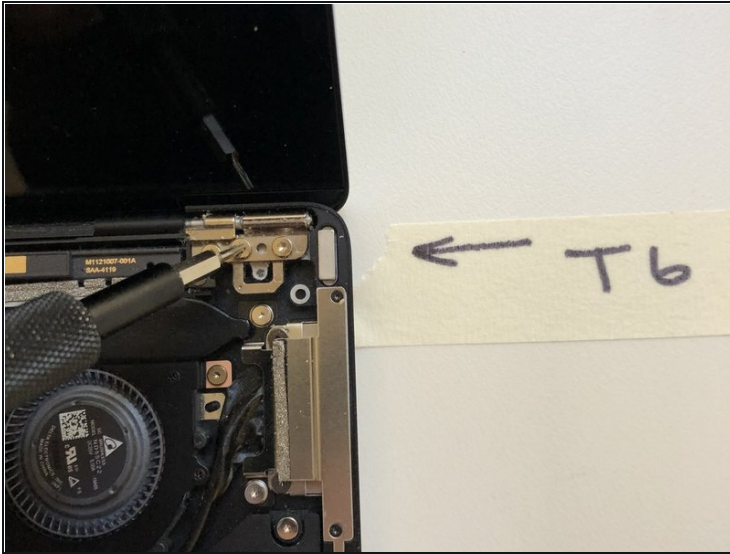
- Remove the clip-on shields for the display assembly.

Step 8



- Unclip the connectors. They are pretty tight so I'd suggest using a spudger or 2.

Step 9



- Using a T6 screwdriver, remove the 6 screws holding in the display.

Step 10



- Lay the display on a heating pad being careful of the connectors. A heat gun would work too.
- I used 60 Degrees C for around 15 minutes.

Step 11



- Use a metal card to get in between the glass and the housing. Swap to a [plastic card](#) to cut through the rest of the adhesive.

Step 12



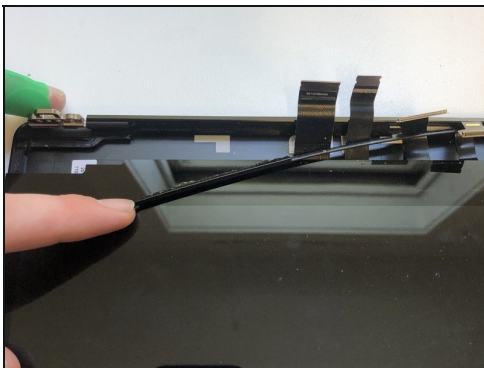
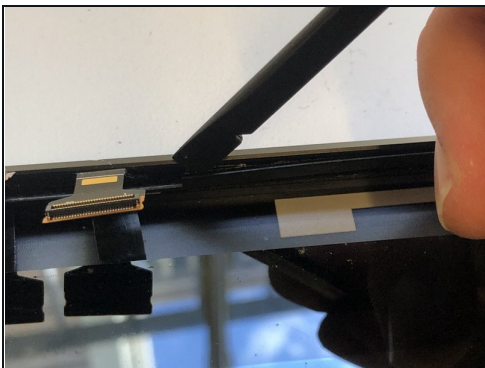
- Watch out for the Sensors up the top. If you damage these the device will fail to turn on. It basically bricks completely without the sensors.

Step 13



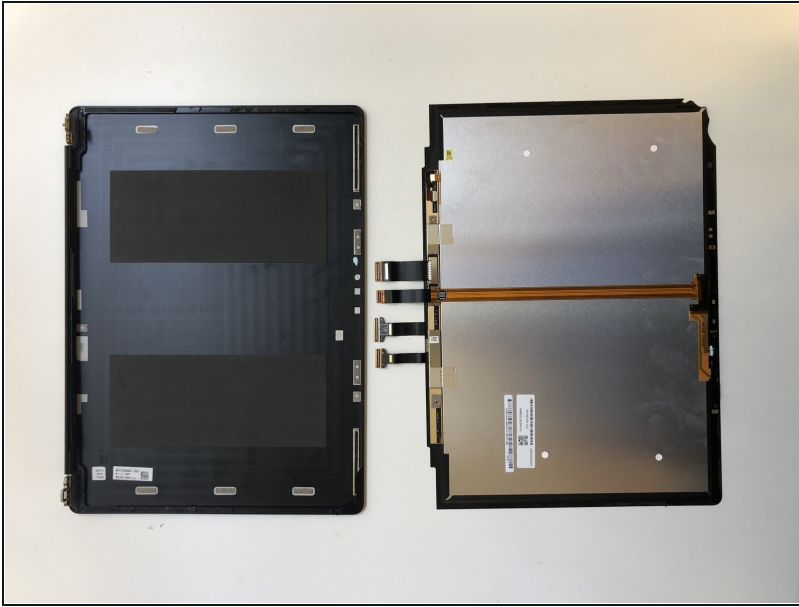
- Heat up the bottom of the display and horizontally pull the screen out. Try to leave the bottom adhesive intact as we are going to be using this later.

Step 14



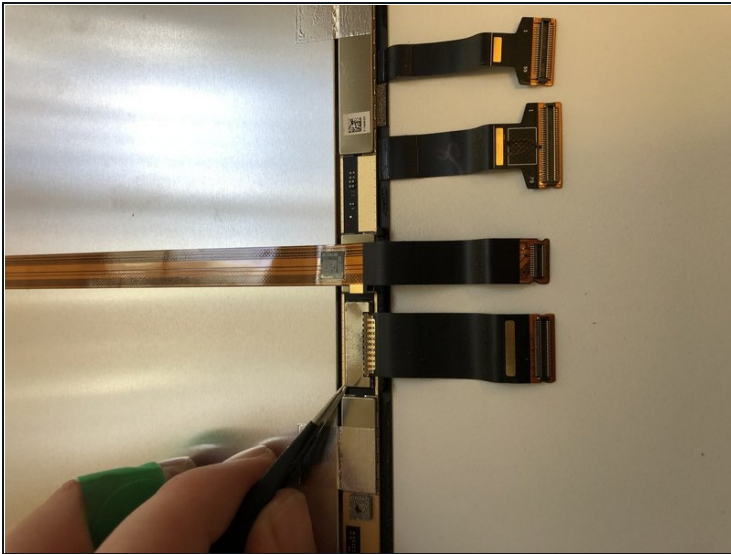
- Remove one side of the plastic bar holding the cables in place. Slide the display out leaving the plastic bar intact.

Step 15



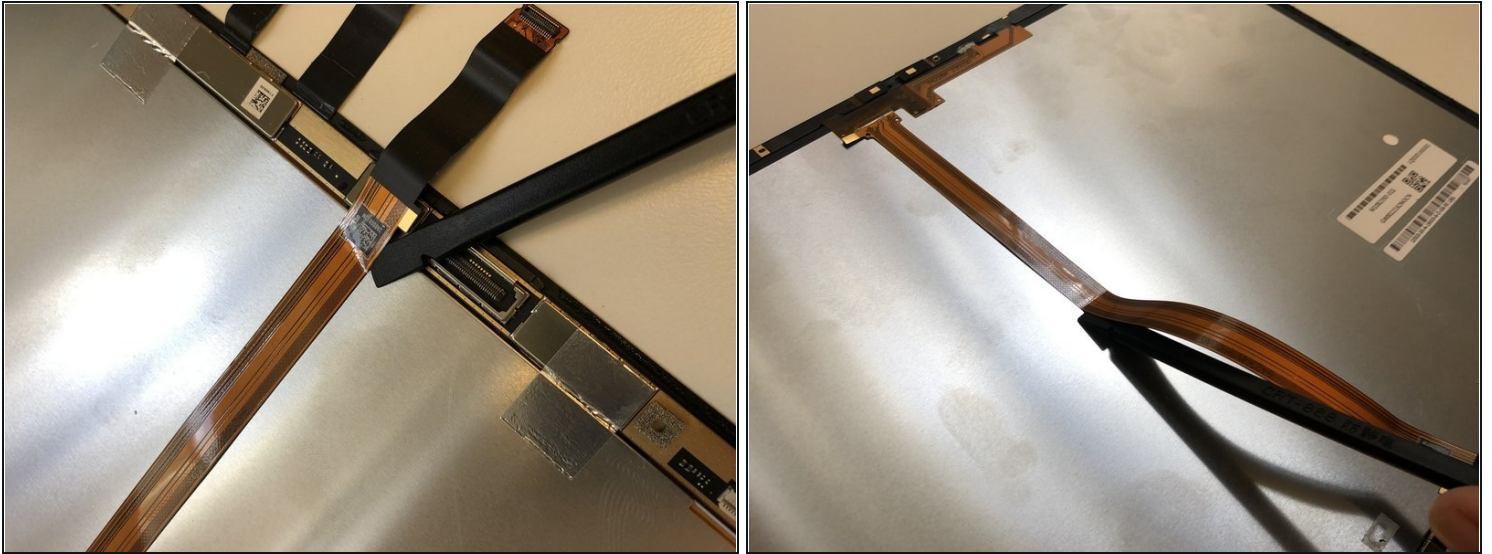
- Screen off. Time to move on.

Step 16



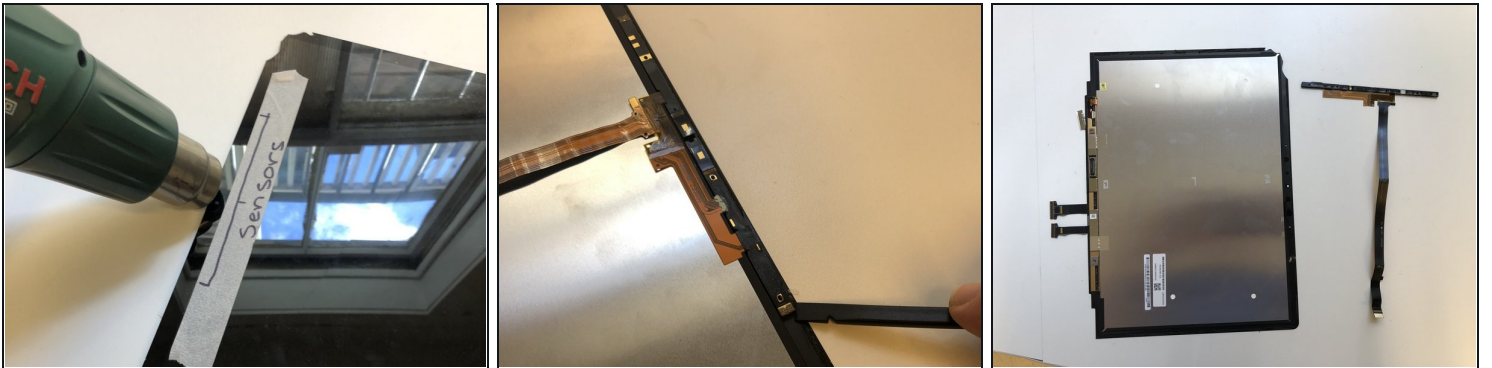
- Remove the snap-on shield and cable. We will need this later.

Step 17



- CAREFULLY loosen the sensor cable on the back of the display.

Step 18



- Heat the area around the sensors from the front. The adhesive here isn't very strong so you don't need loads of heat.

Step 19



- Remove the old adhesive and make sure it's clean. You really don't want to be removing this screen once it's set down.

Step 20



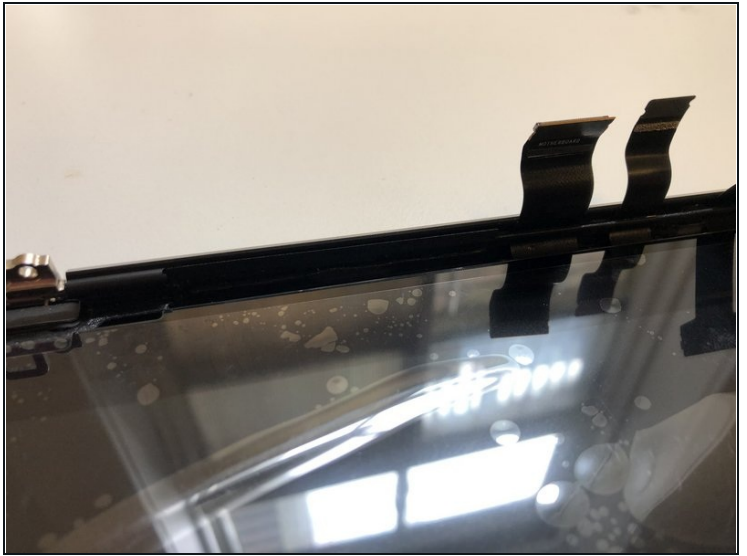
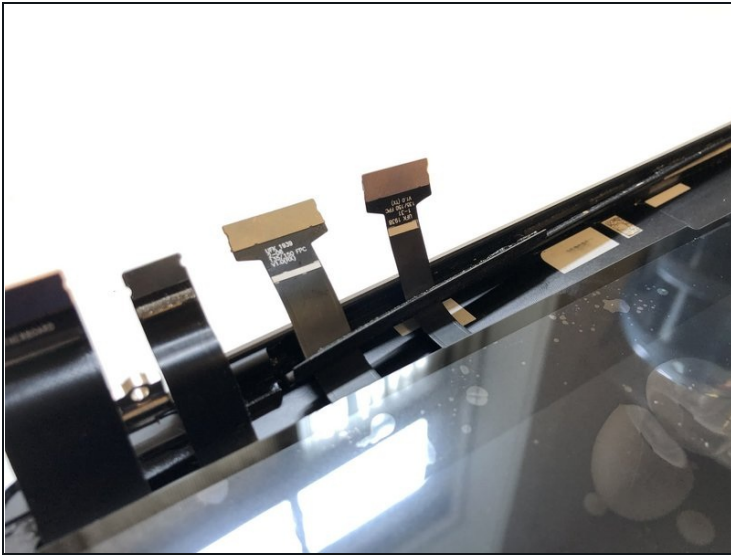
- Install the new adhesive. Remove any large clumps on the bottom. We left the old stuff down there as it's a bit awkward to get to cleaning and reapplying-wise.

Step 21



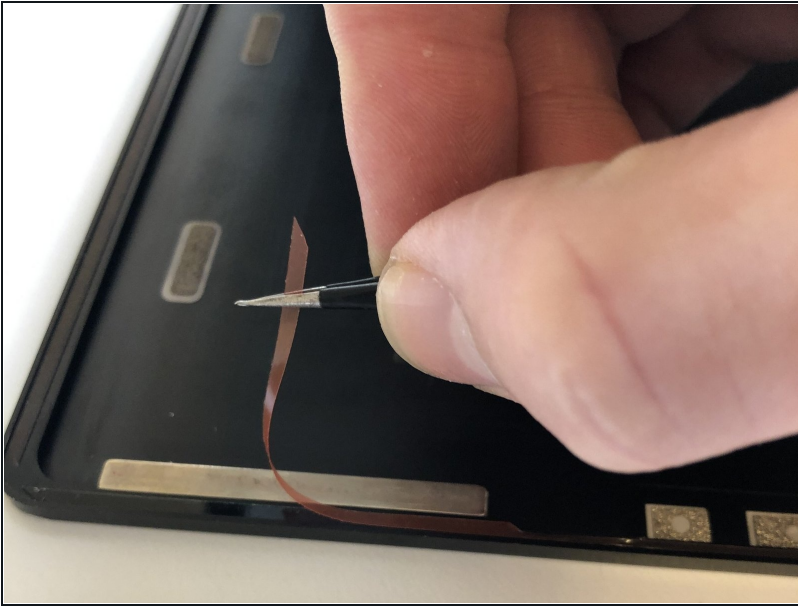
- Test the new screen. Make sure you connect the sensors or it won't start or respond at all.

Step 22



- Slide the cable back under the plastic bar and set it back in place. Lightly pull the cables to make sure there's no slack internally.

Step 23



- Remove the plastic layer on top of your adhesive and set the screen into the housing. You need to push the screen in quite a bit at the bottom to make it sit correctly.

Step 24



- Place the assembly in then screw it in. Connect the cables and replace the shields.

Step 25



- Install the screws and feet and you're done!

Let me know how you got on. I think we can all agree this was much easier than a Book 1... lot less nerve-racking too.